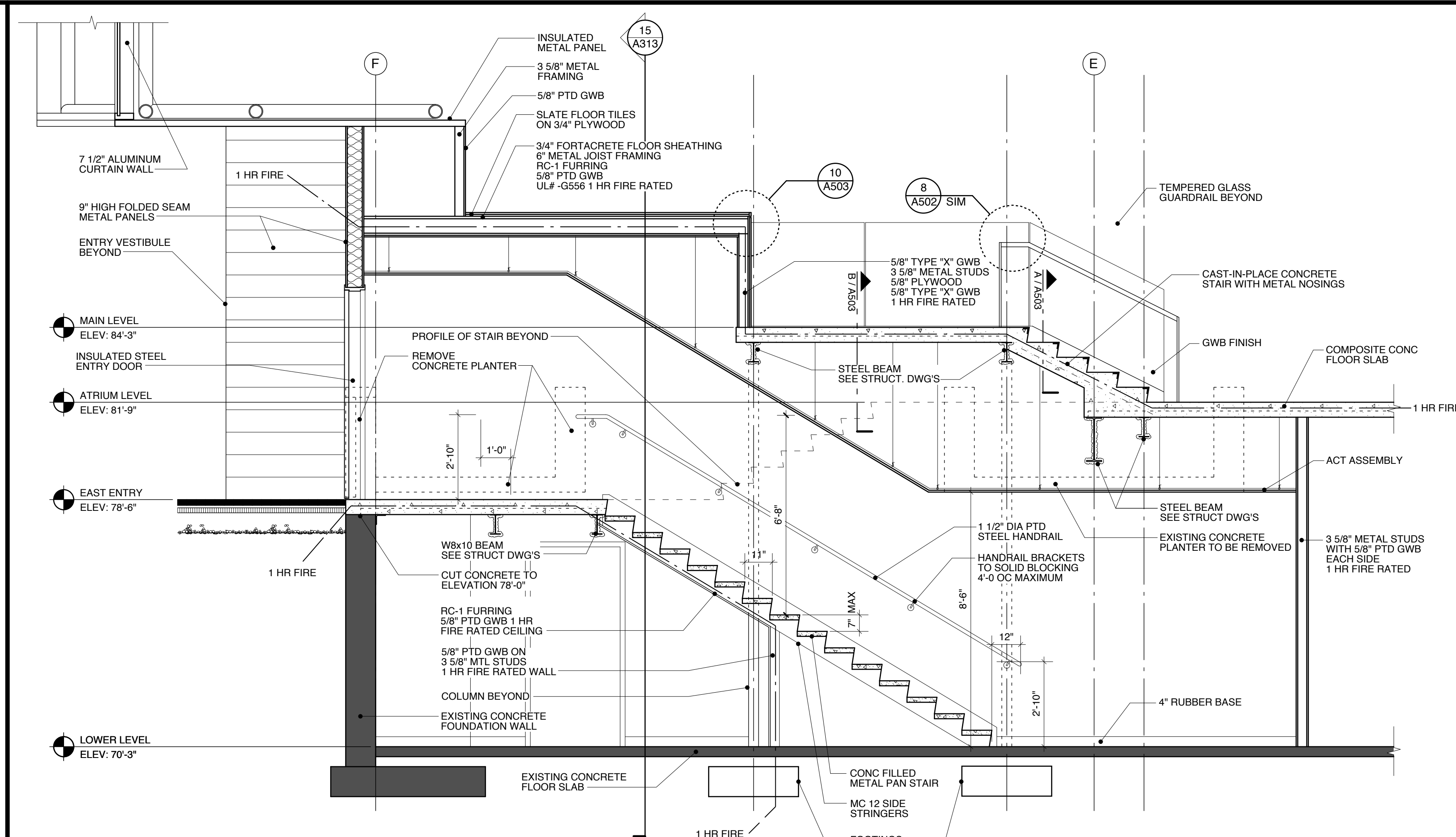
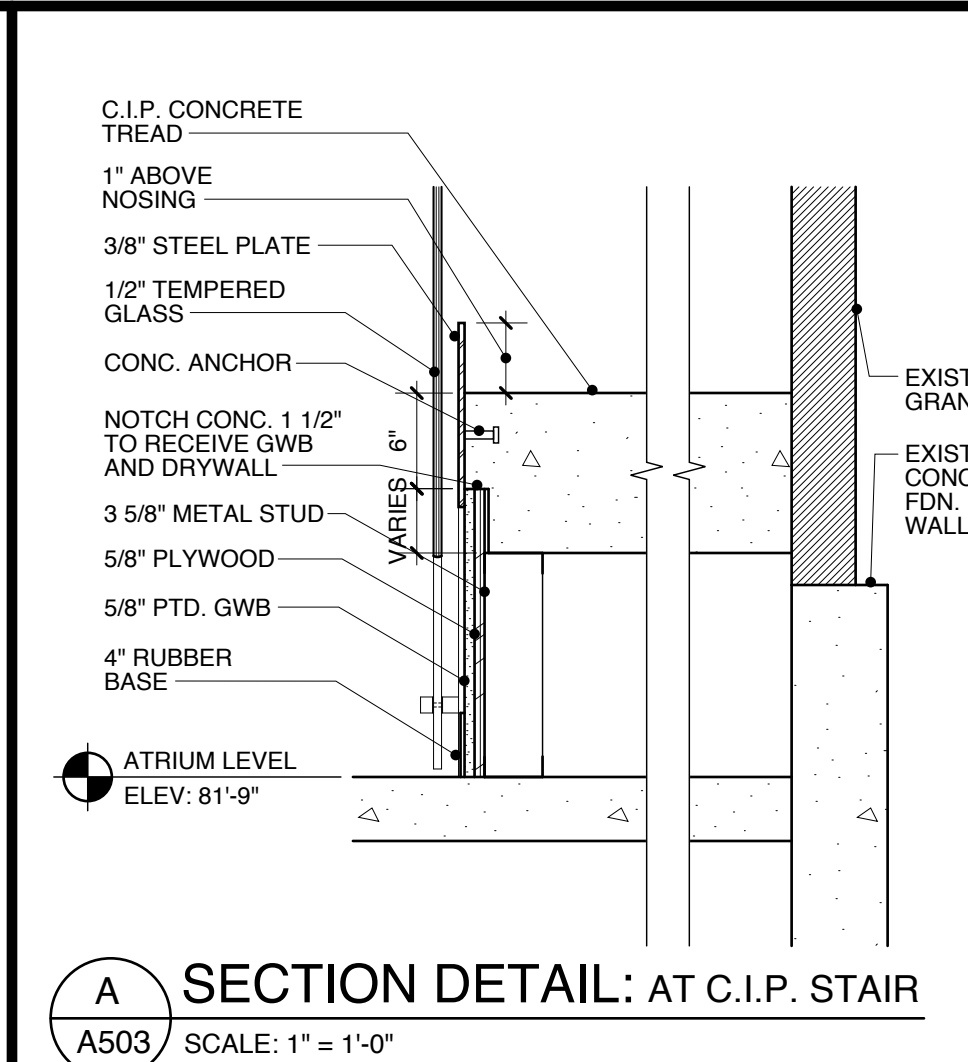


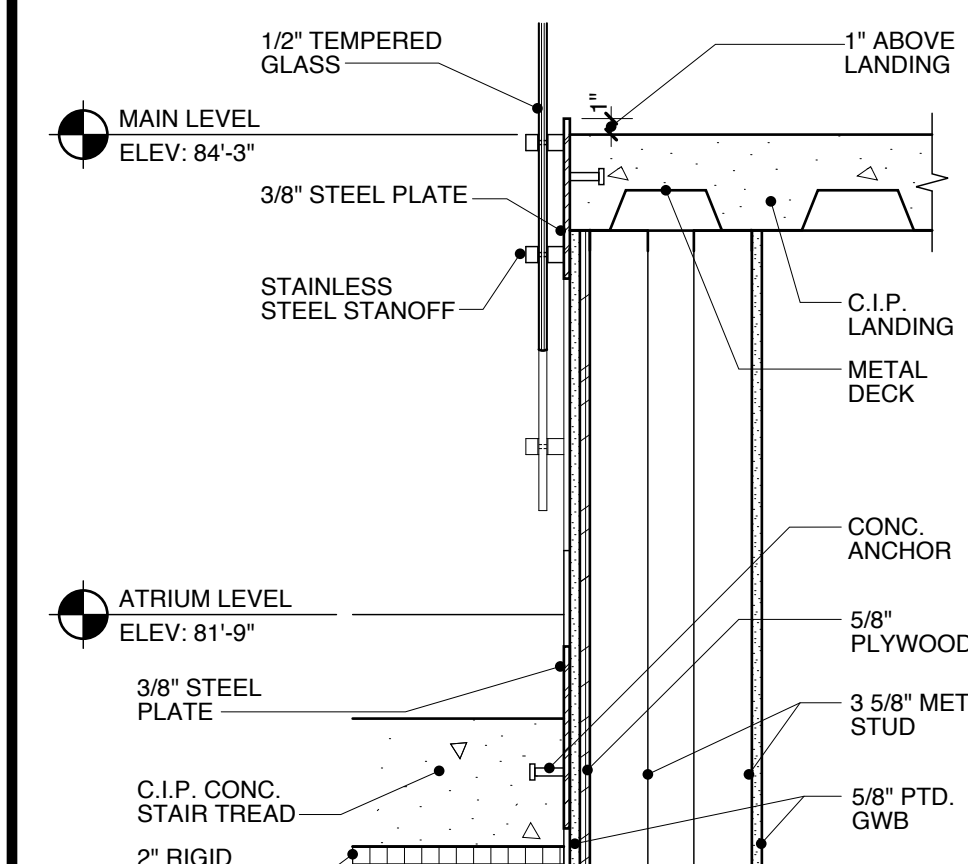
1 STAIR ENLARGED PLAN: AT ELM STREET ENTRY
A102 SCALE: 3/8" = 1'-0"



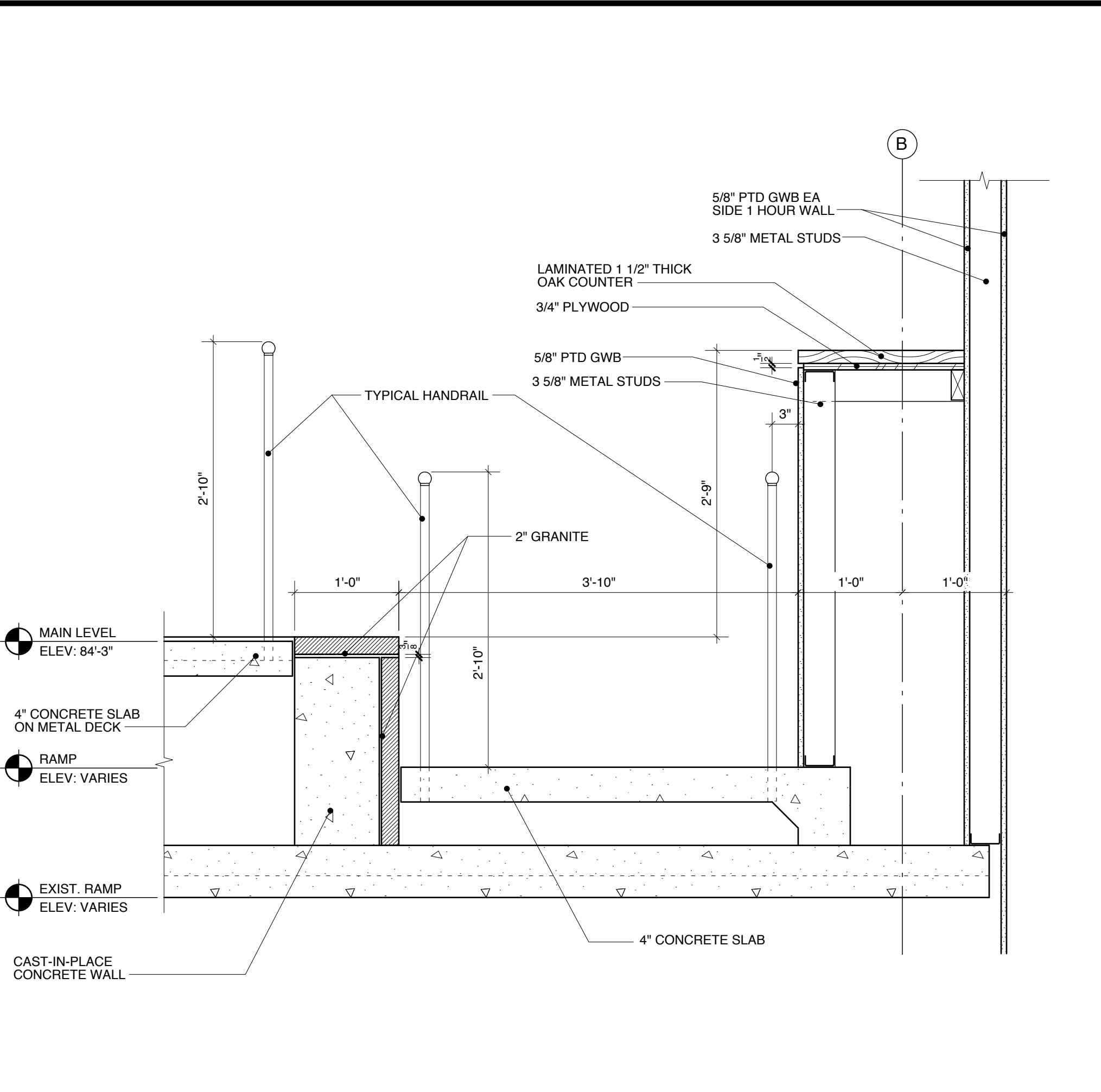
2 STAIR NO. 4 SECTION
A503 SCALE: 3/8" = 1'-0"



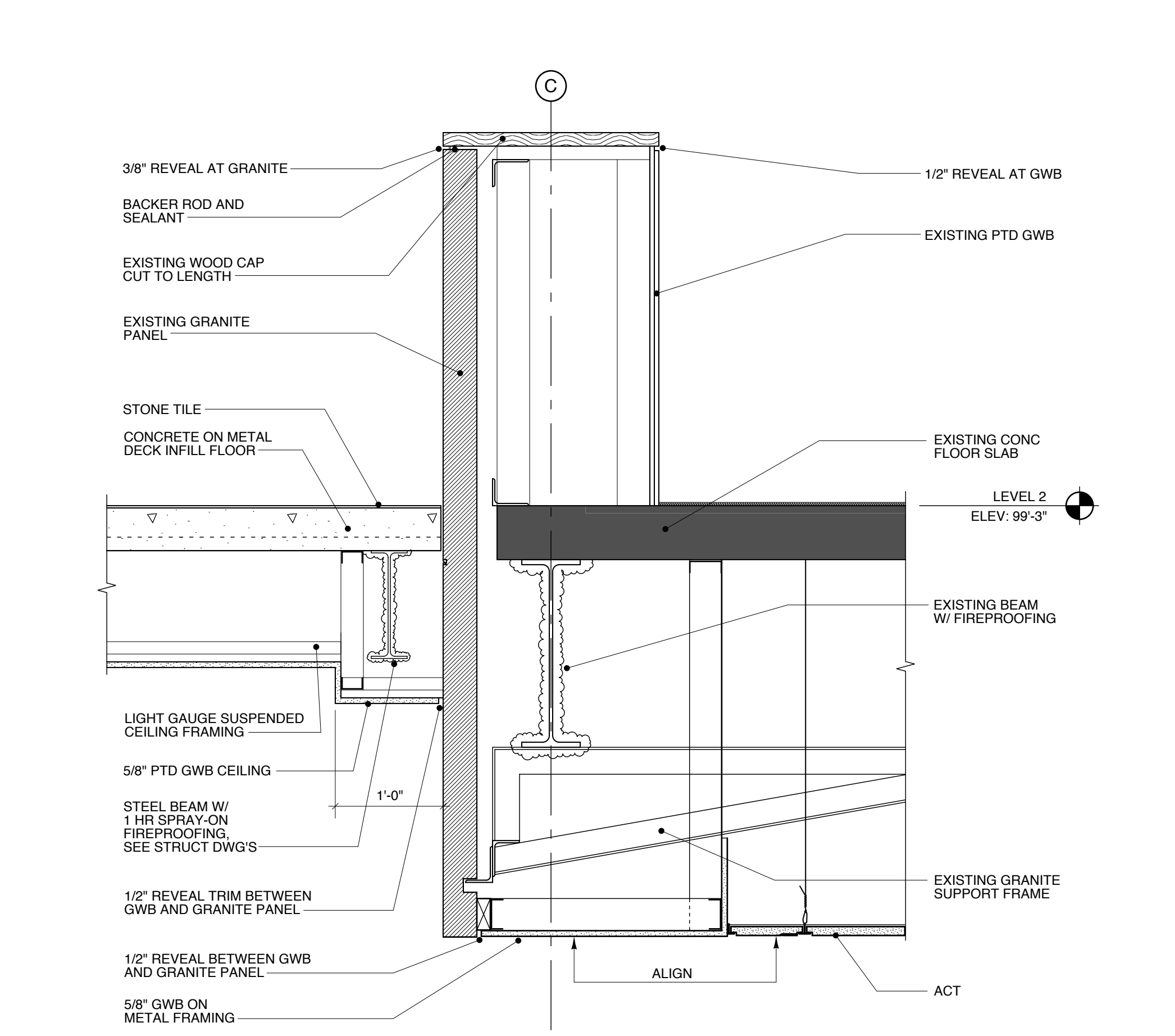
A SECTION DETAIL: AT C.I.P. STAIR
A503 SCALE: 1" = 1'-0"



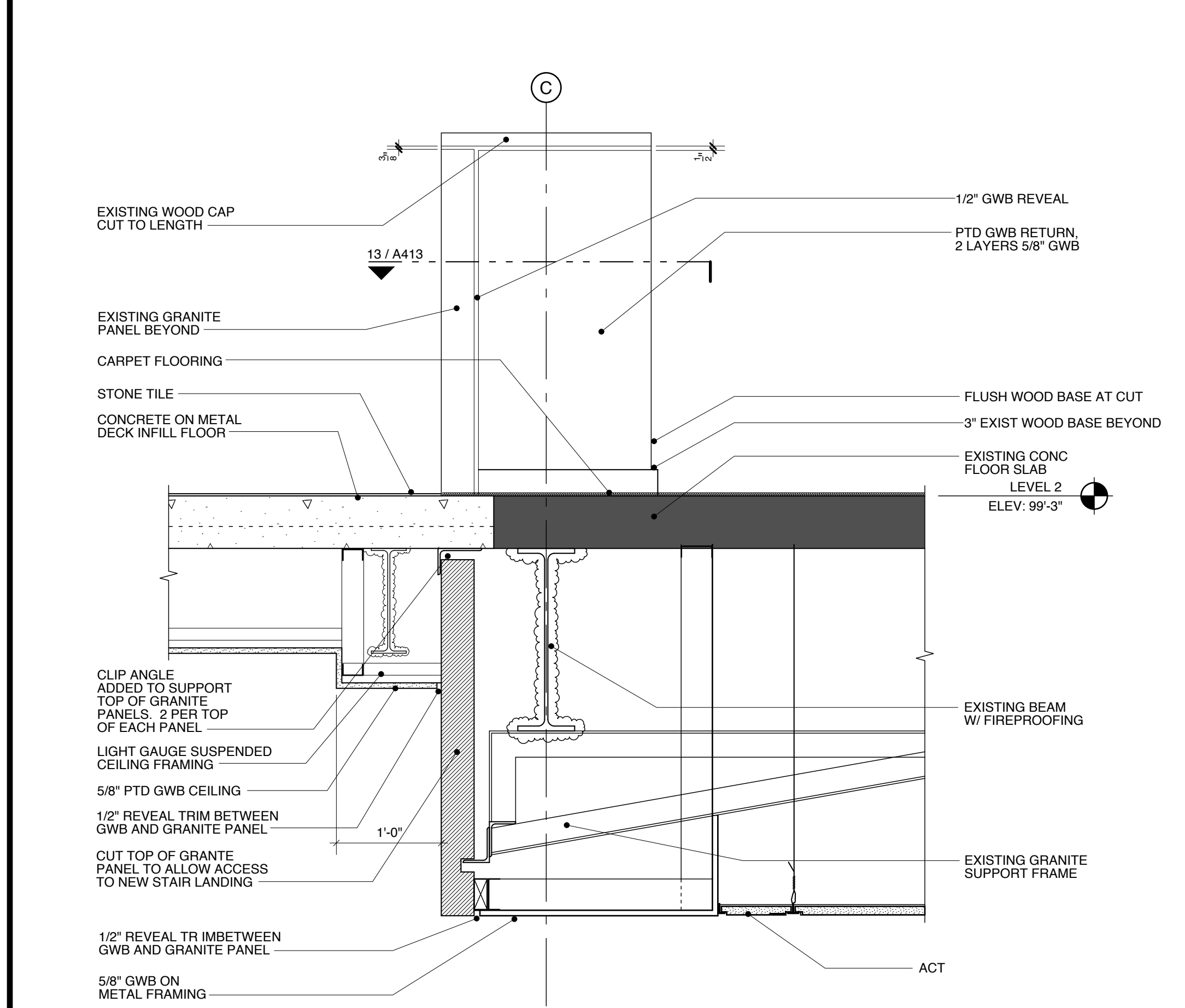
B SECTION DETAIL: AT C.I.P. STAIR/LANDING
A503 SCALE: 1" = 1'-0"



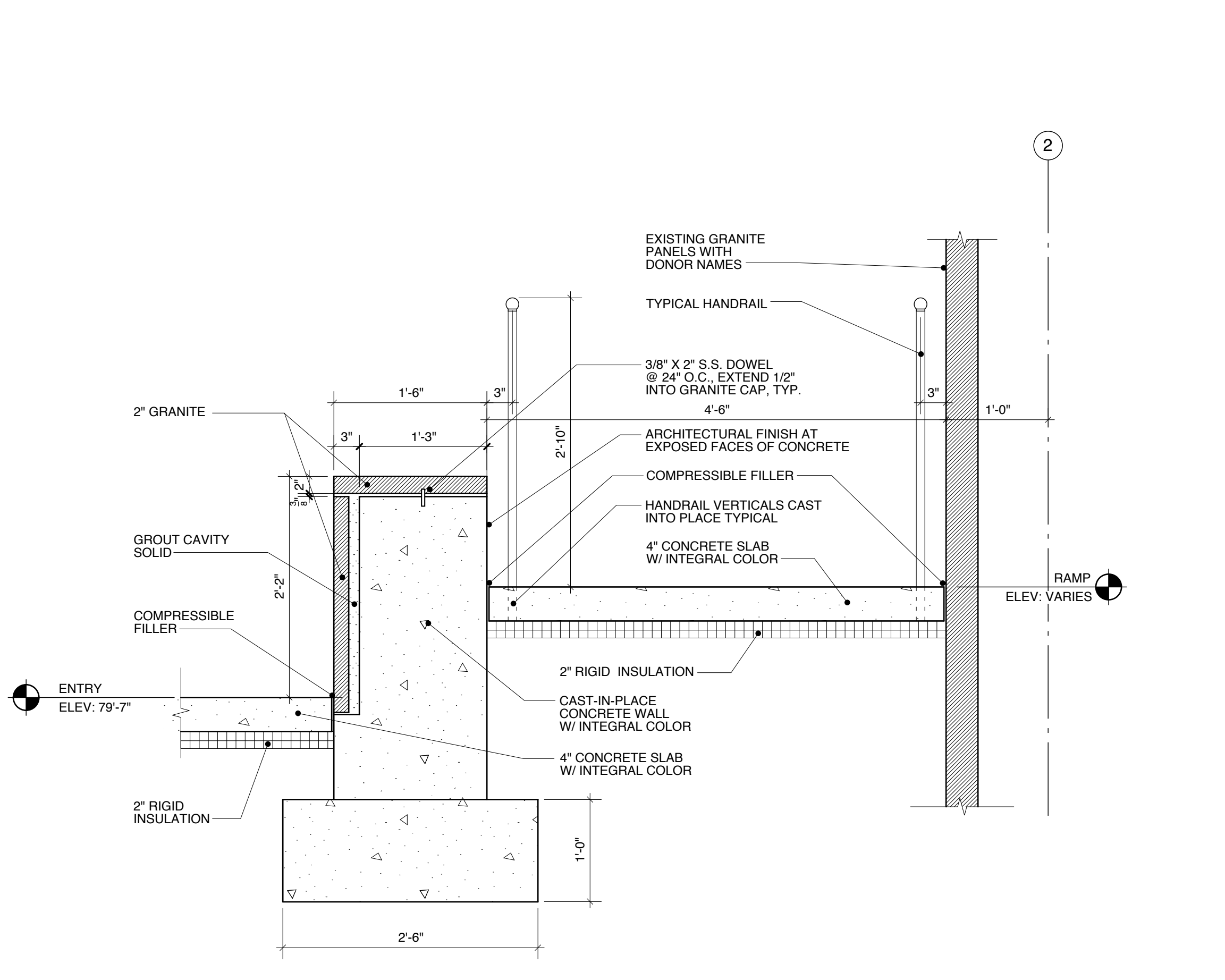
3 SECTION DETAIL: AT RAMP AT WALKWAY [166]
A502 SCALE: 1" = 1'-0"



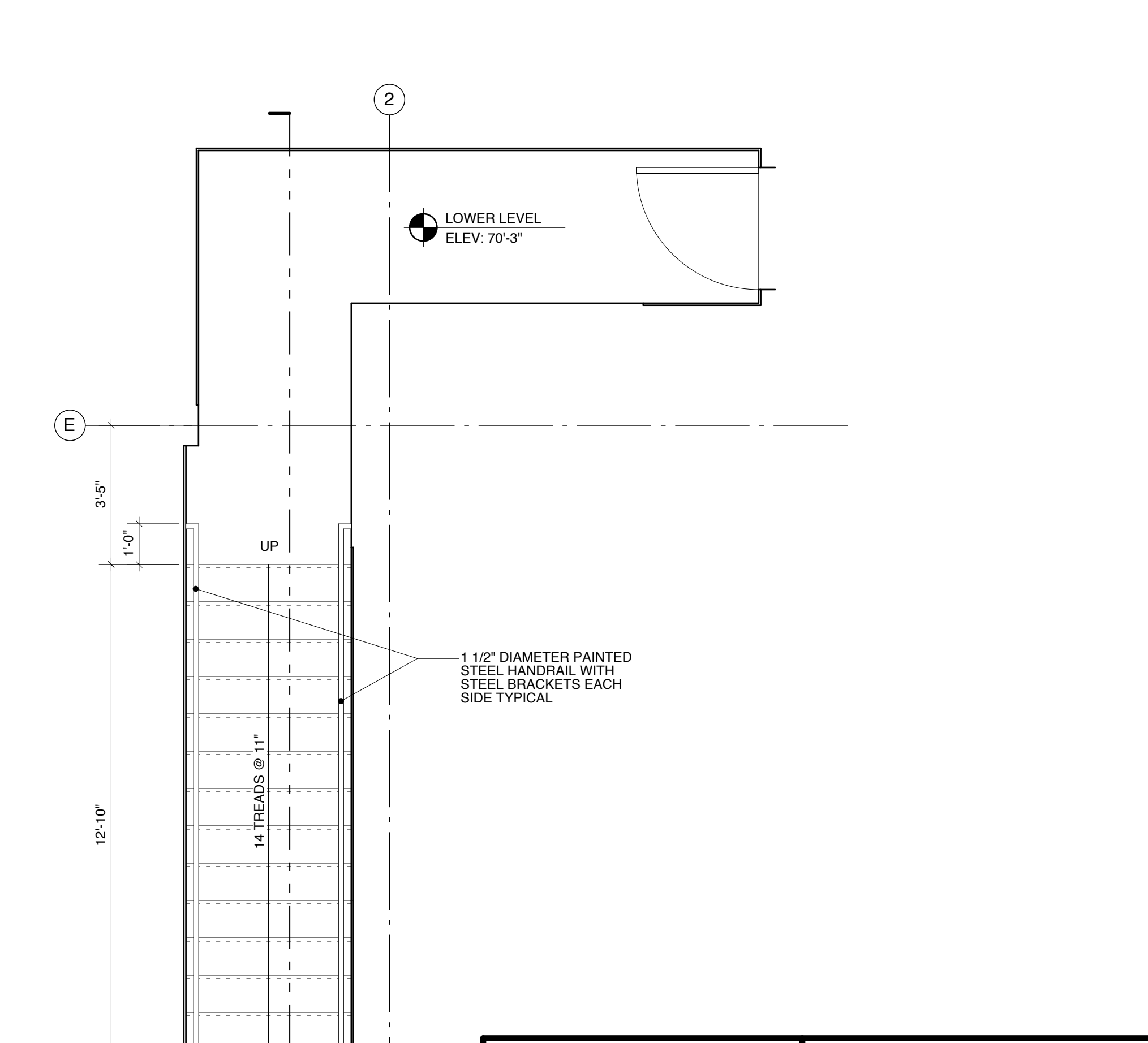
4 SECTION DETAIL: STAIR 6 AT LEVEL 2 LANDING
A501 SCALE: 1" = 1'-0"



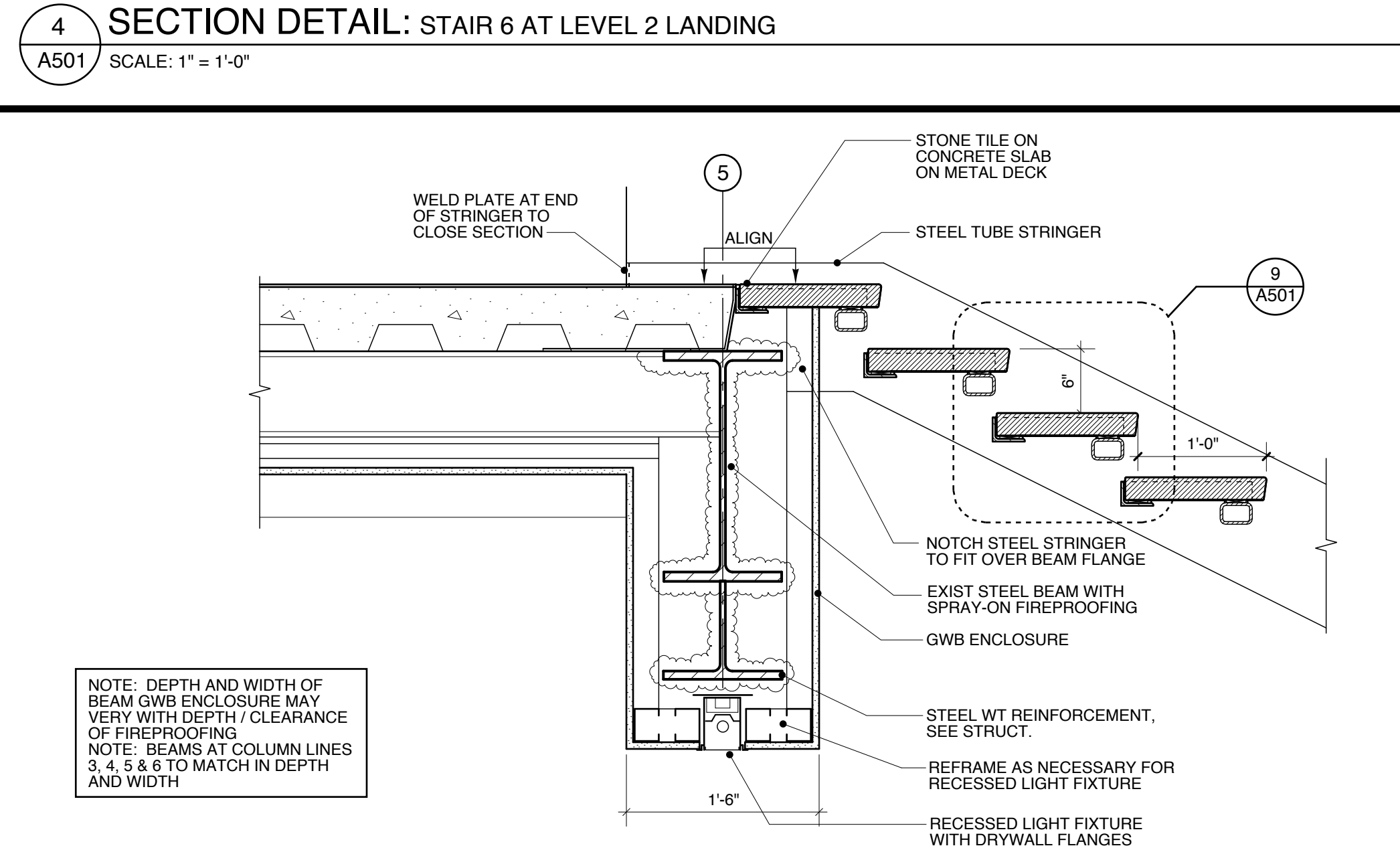
5 SECTION DETAIL: STAIR 6 AT LEVEL 2 LANDING
A501 SCALE: 1" = 1'-0"



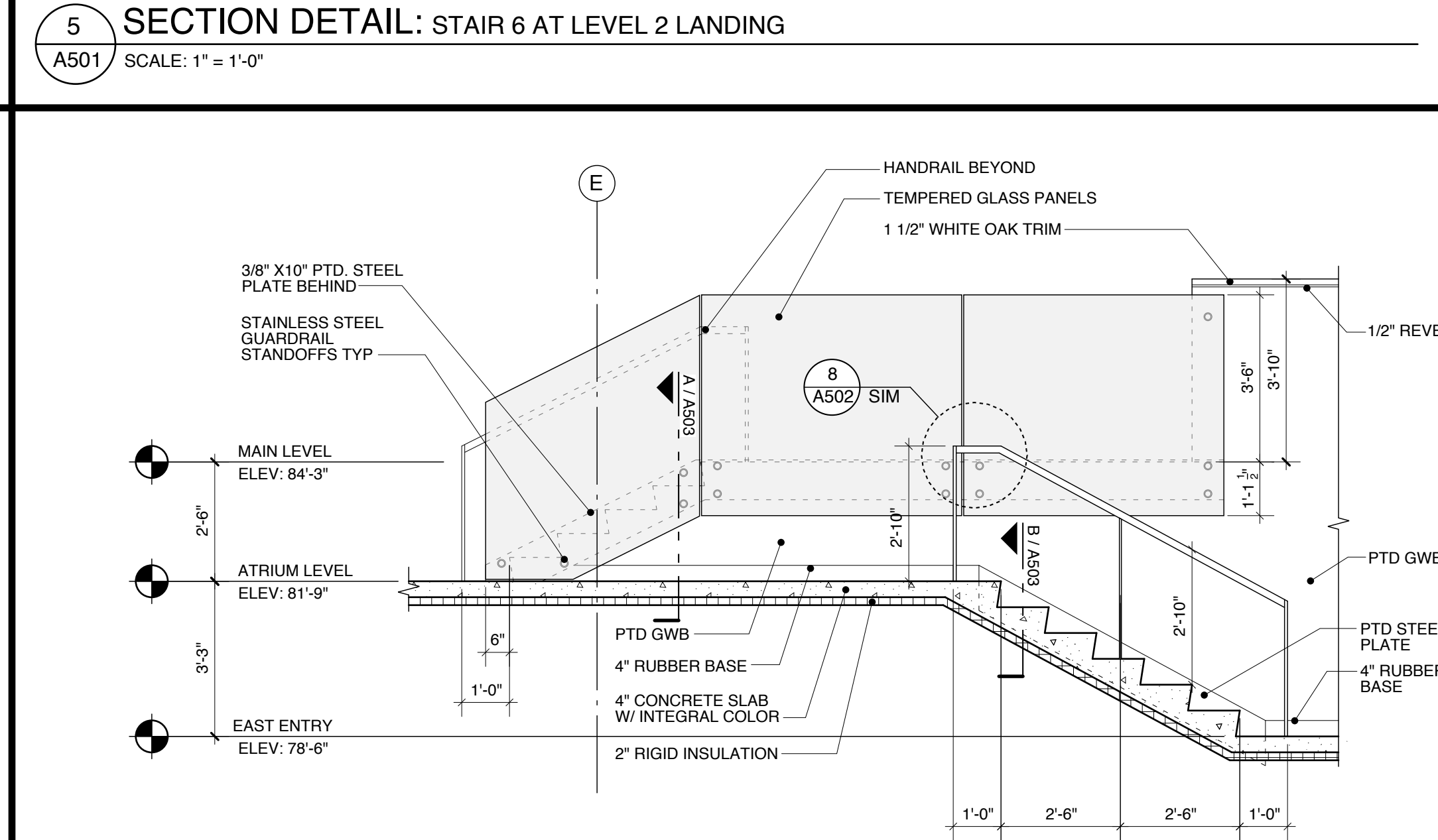
6 RAMP SECTION DETAIL
A502 SCALE: 1" = 1'-0"



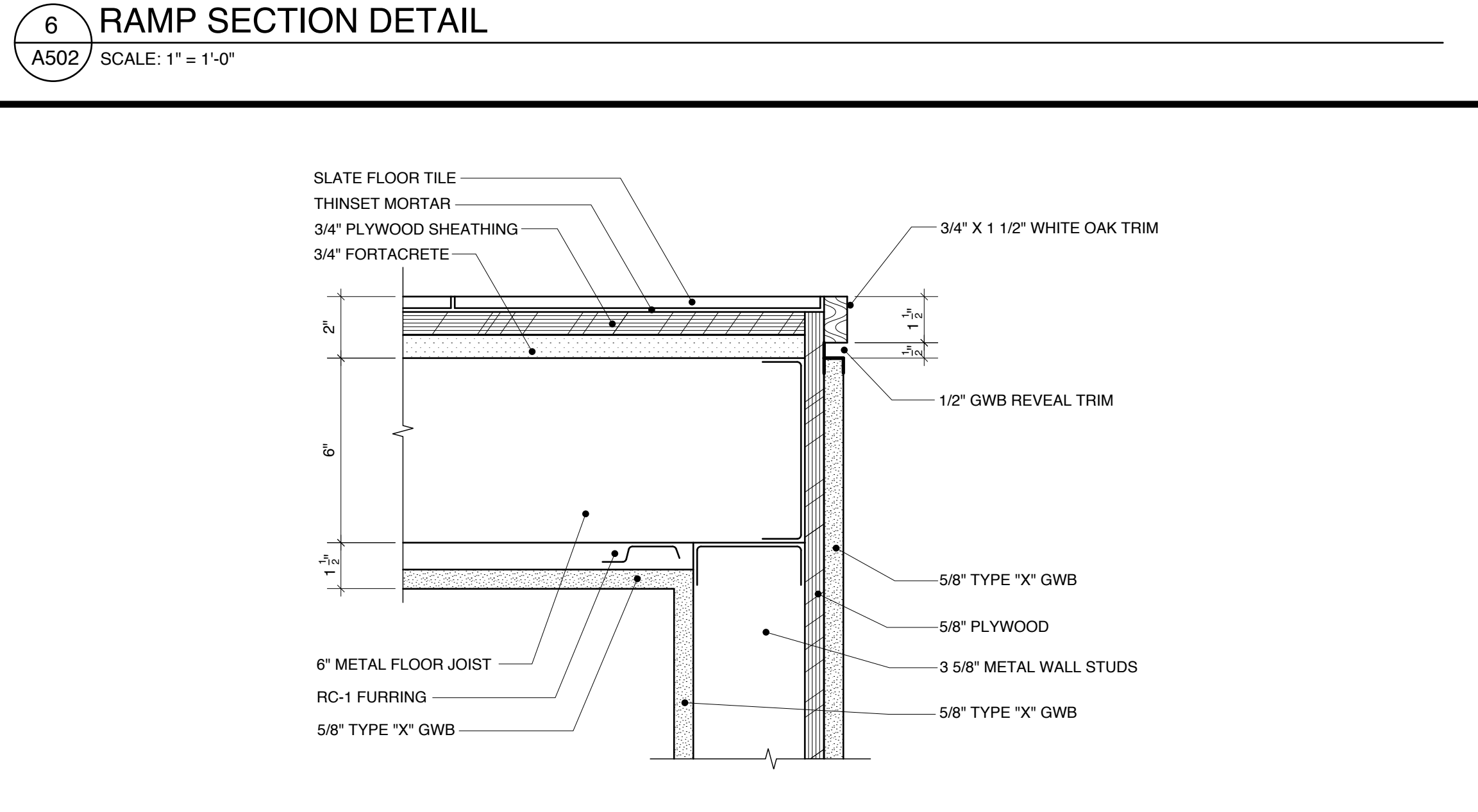
11 STAIR NO. 4 ENLARGED PLAN
A101 SCALE: 3/8" = 1'-0"



8 SECTION DETAIL: STAIR 6 AT TREAD/LANDING TRANSITION
A501 SCALE: 1" = 1'-0"



9 STAIR SECTION
A503 SCALE: 3/8" = 1'-0"



10 SHELF DETAIL
A503 SCALE: 3" = 1'-0"

| | |
|-----------------------------------------------------------------------------------------------------------------------------------------------------------|--------------------------------------------------------------------------------------------------------------------------|
| <p>Scott Simons Architects 75 York Street Portland, Maine 04101 tel: 207.772.4555 fax: 207.628.4555 web: www.simonsarchitects.com</p> | <p>PROJECT</p> <p>Portland Public Library Addition / Renovation</p> <p>5 MONUMENT SQUARE PORTLAND, ME</p> |
| | <p>TITLE</p> <p>VERTICAL CIRCULATION</p> |
| <p>THIS DRAWING IS THE PROPERTY OF SCOTT SIMONS ARCHITECTS AND IS NOT TO BE COPIED OR REPRODUCED IN PART OR WHOLE.</p> | <p>STATUS:</p> <p>ISSUED FOR BIDDING CONSTRUCTION DOCUMENTS</p> |
| <p>DATE: 02.13.2009</p> <p>SCALE: 3/8" = 1'-0"</p> <p>PROJECT NO: 2008-0030</p> <p>DRAWN BY: S/SF</p> <p>2009 © Scott Simons Architects</p> | <p>REVISION / DATE:</p> |
| <p>SCOTT R. SIMONS NO. 2034 STATE OF MAINE LICENSED ARCHITECT</p> | <p>DWG NO. A503</p> |