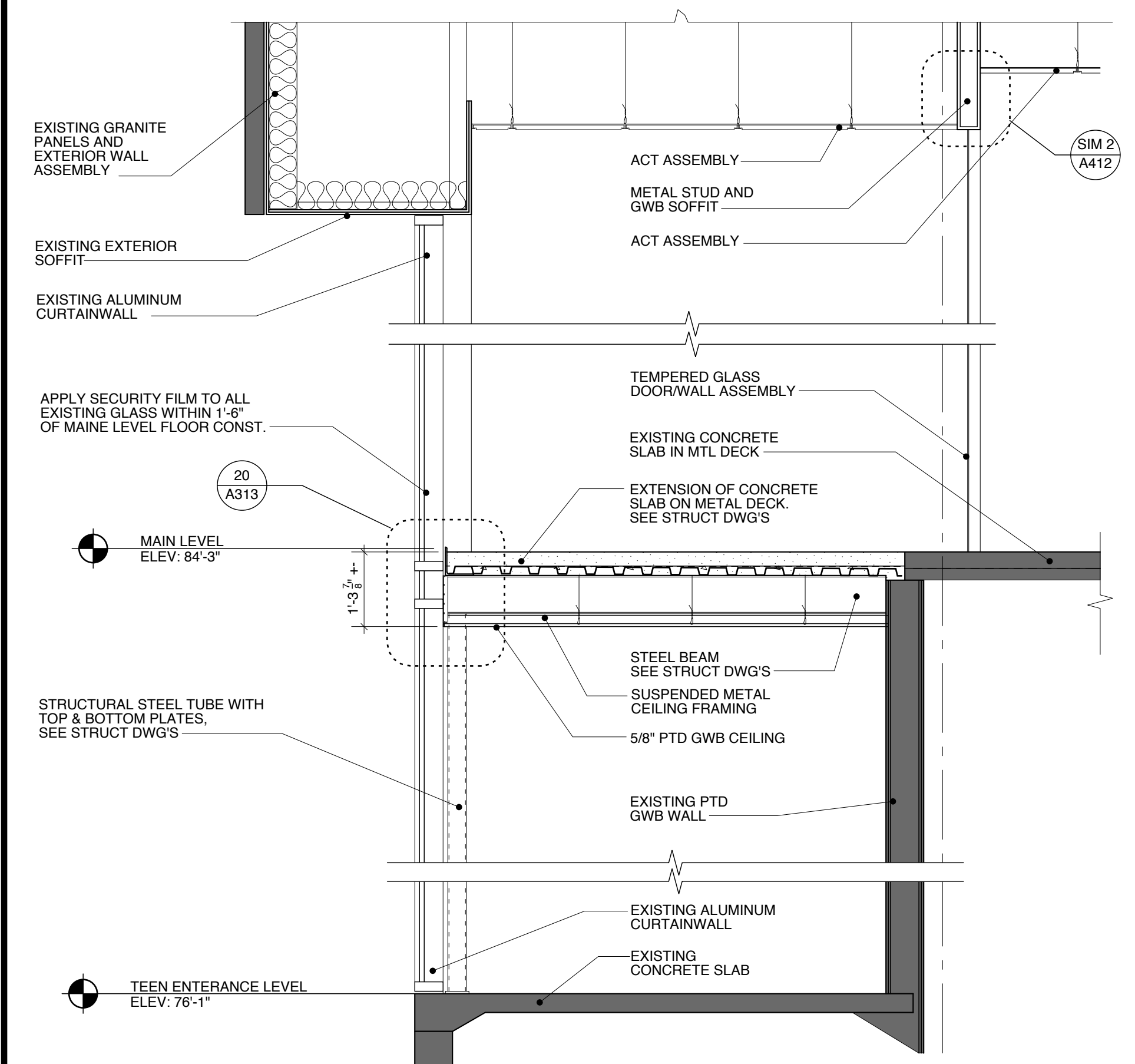
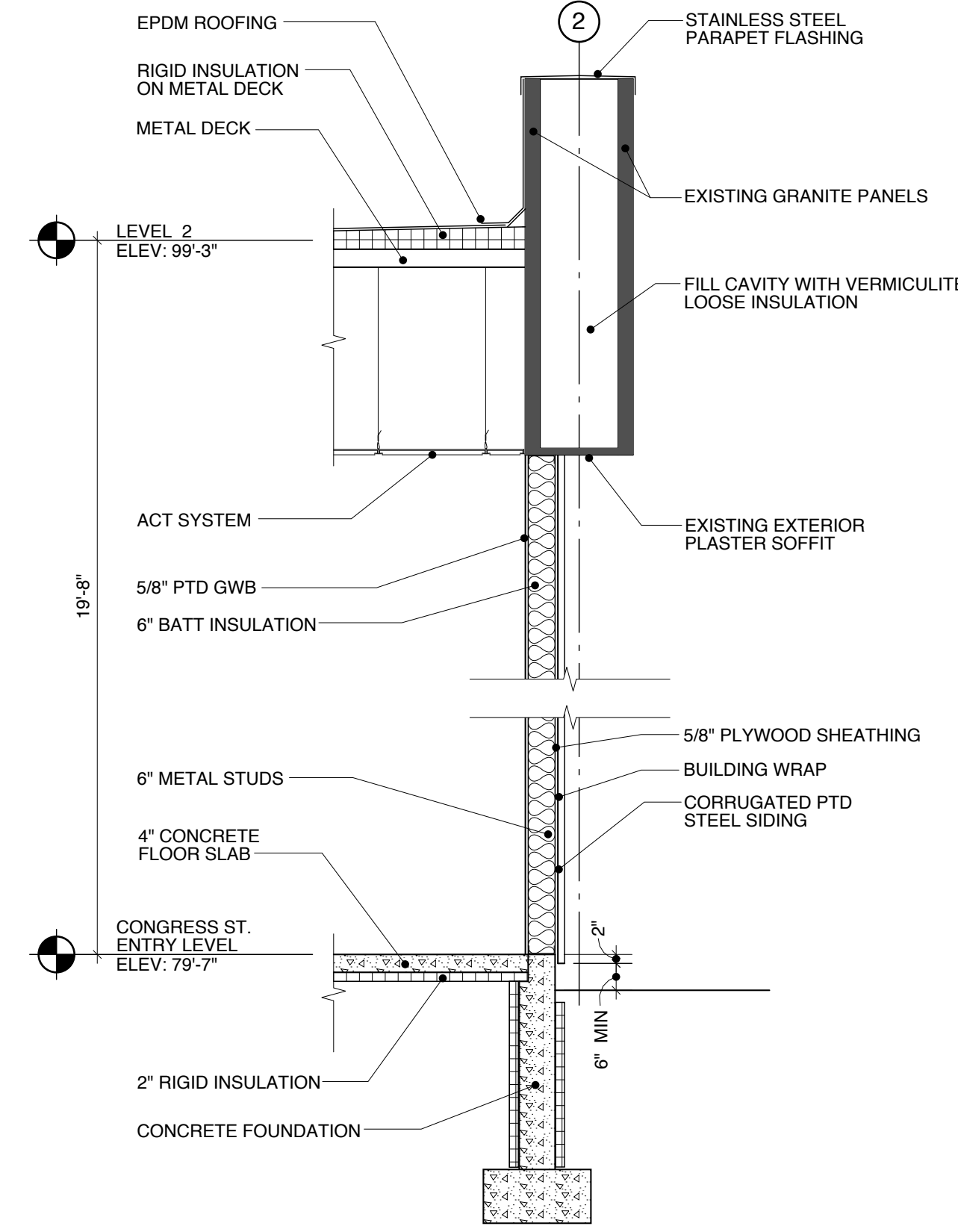


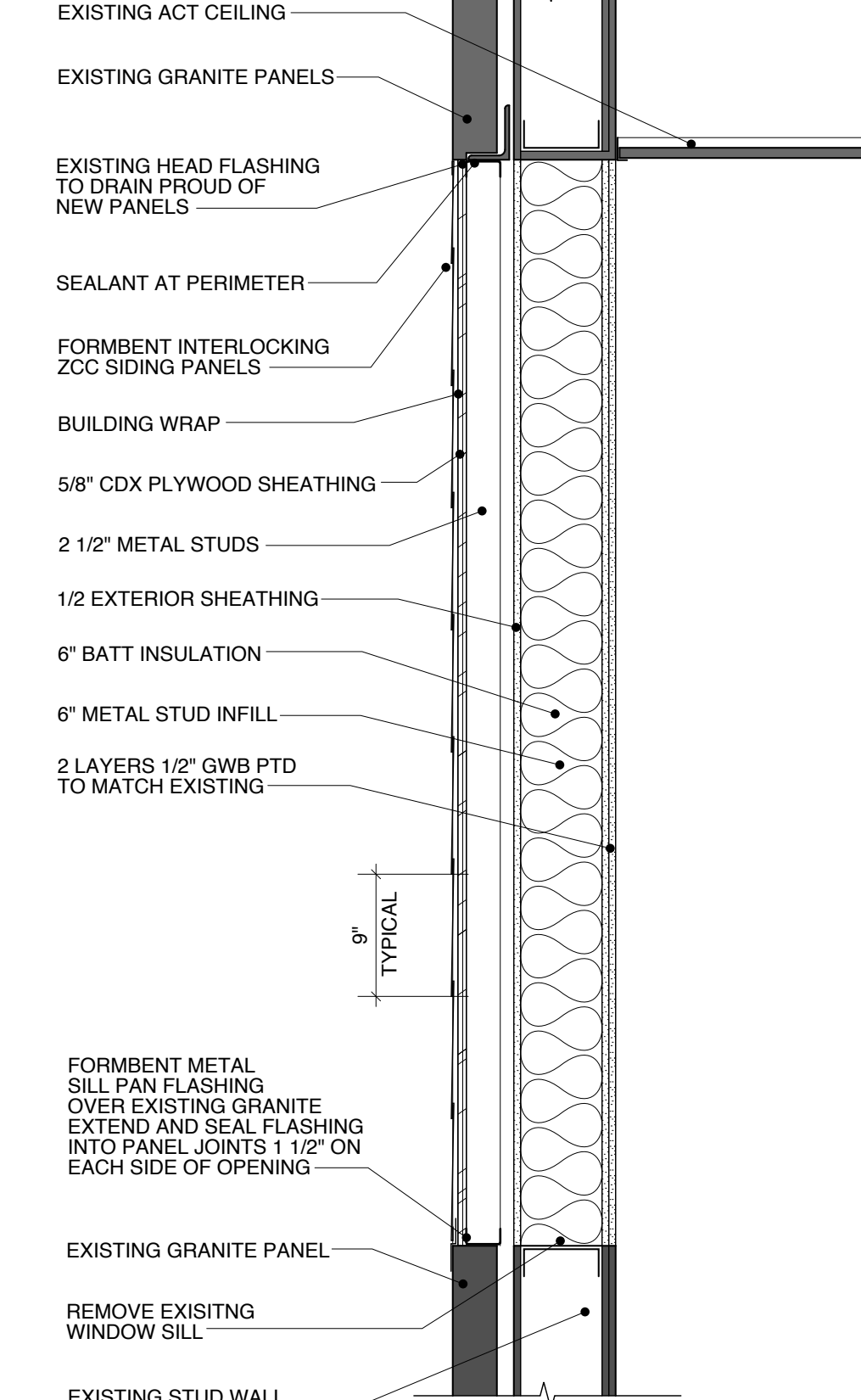
1 TYPICAL BAY SECTION / CHILDREN'S SERVICES  
SCALE: 1/2" = 1'-0"



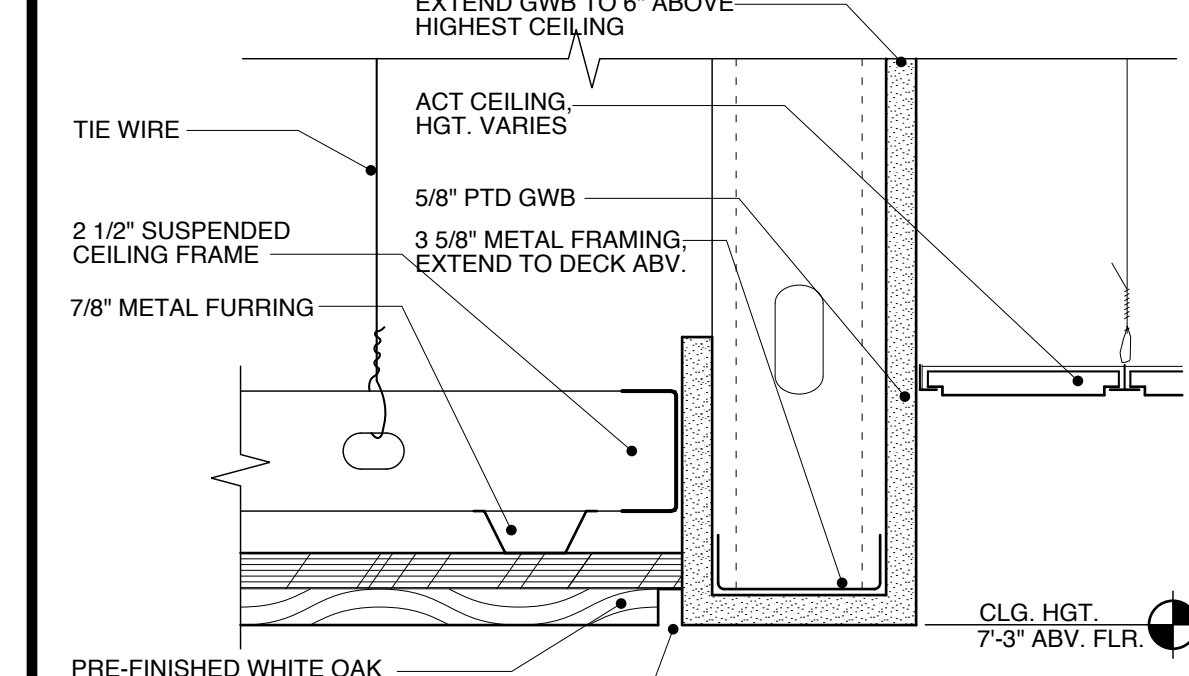
2 ELM STREET TEEN ENTRANCE SECTION  
SCALE: 1/2" = 1'-0"



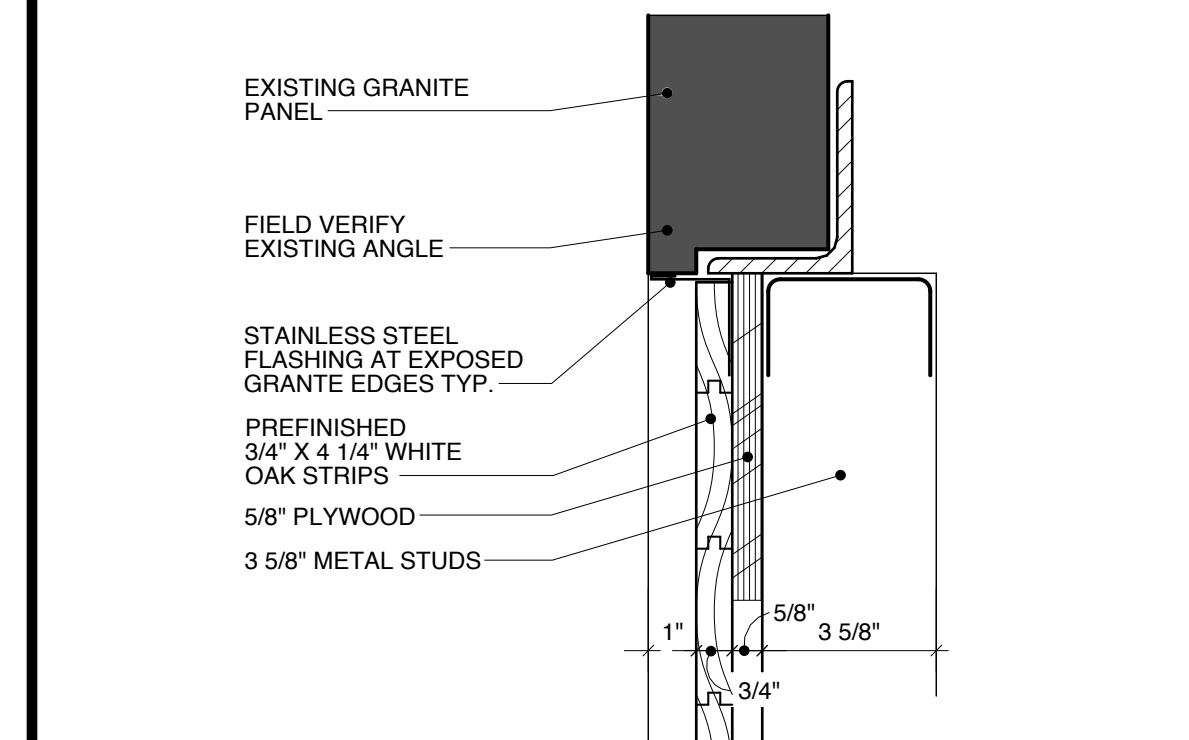
3 WALL SECTION: CONGRESS ST. ENTRY ALLEY WALL INFILL  
SCALE: 3/8" = 1'-0"



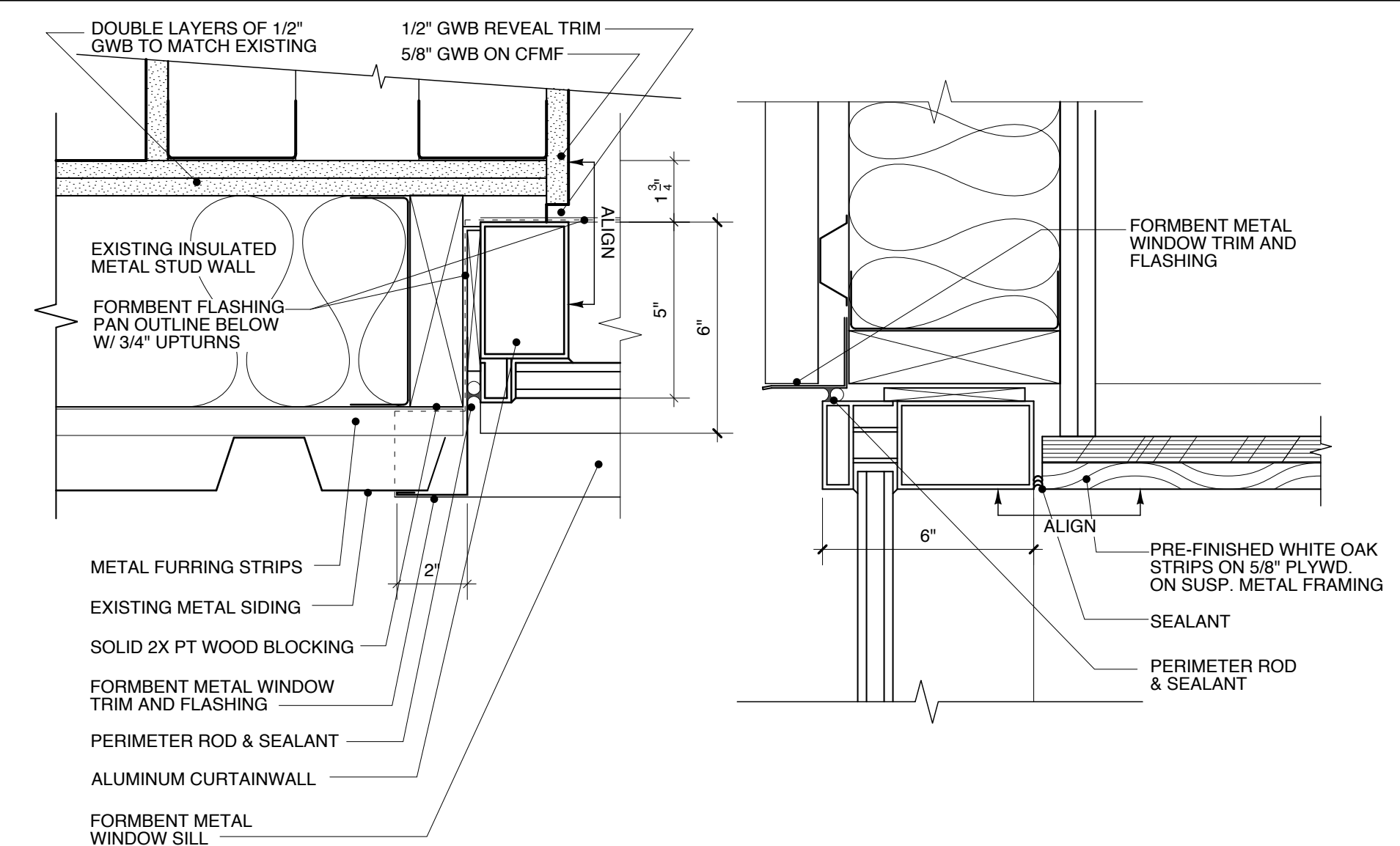
4 TYPICAL METAL PANEL INFILL AT EXISTING WINDOWS  
SCALE: 1" = 1'-0"



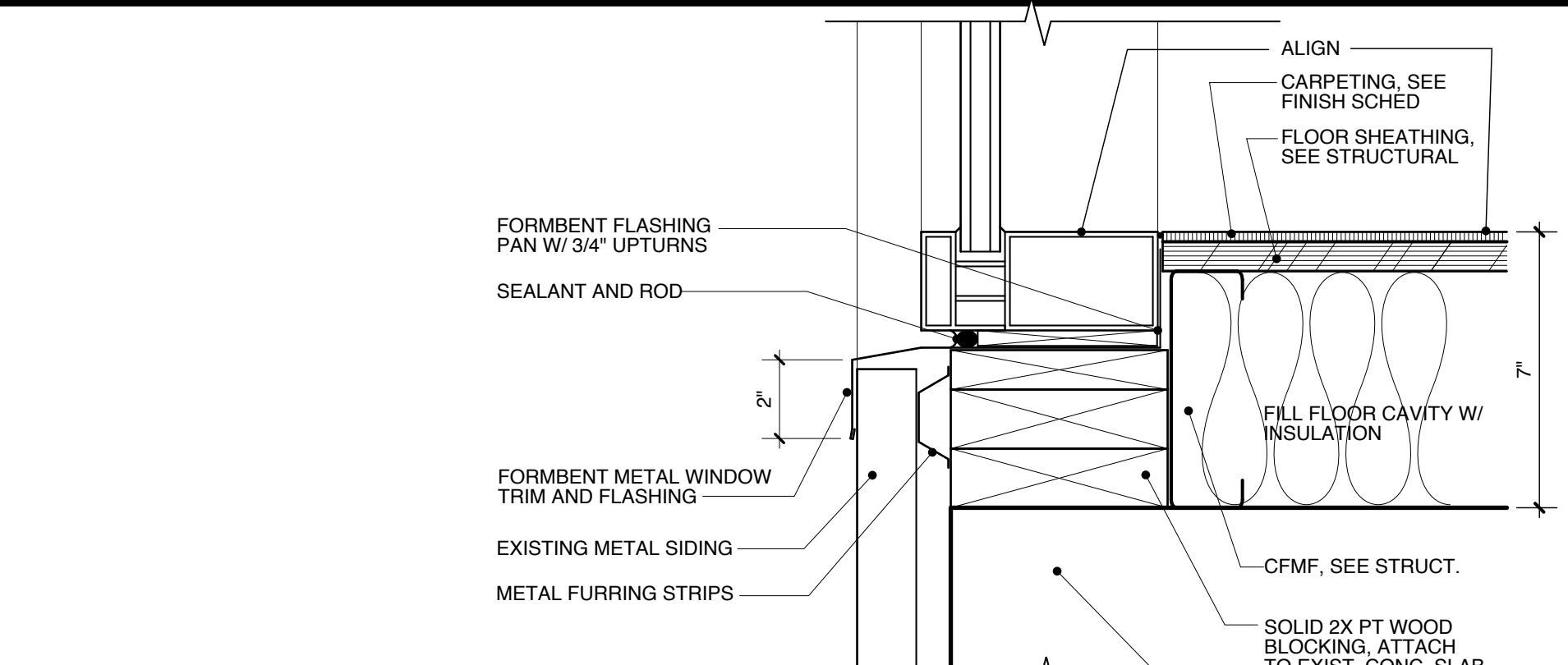
17 SOFFIT SECTION DETAIL  
SCALE: 3" = 1'-0"



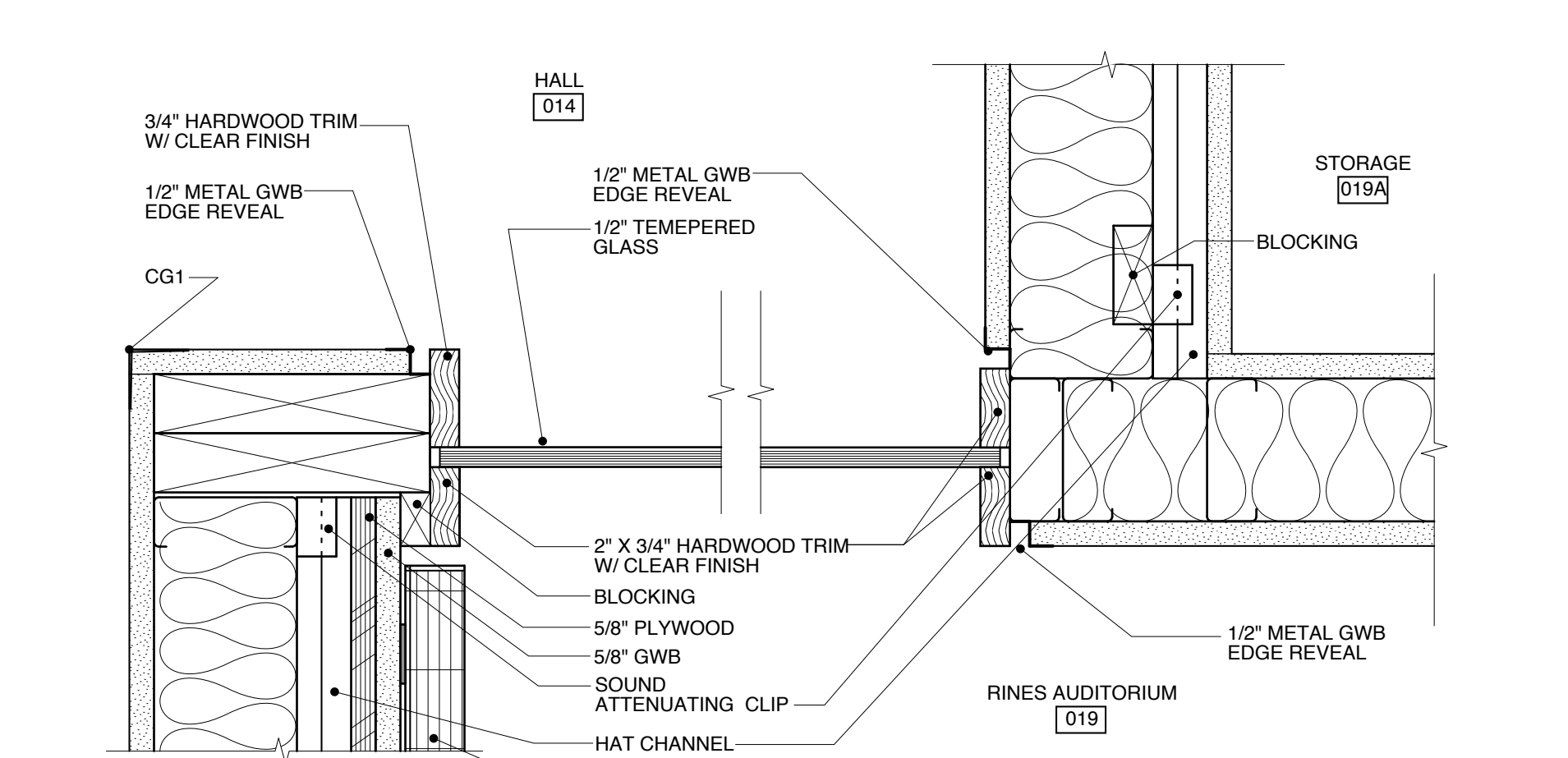
18 SOFFIT SECTION DETAIL  
SCALE: 3" = 1'-0"



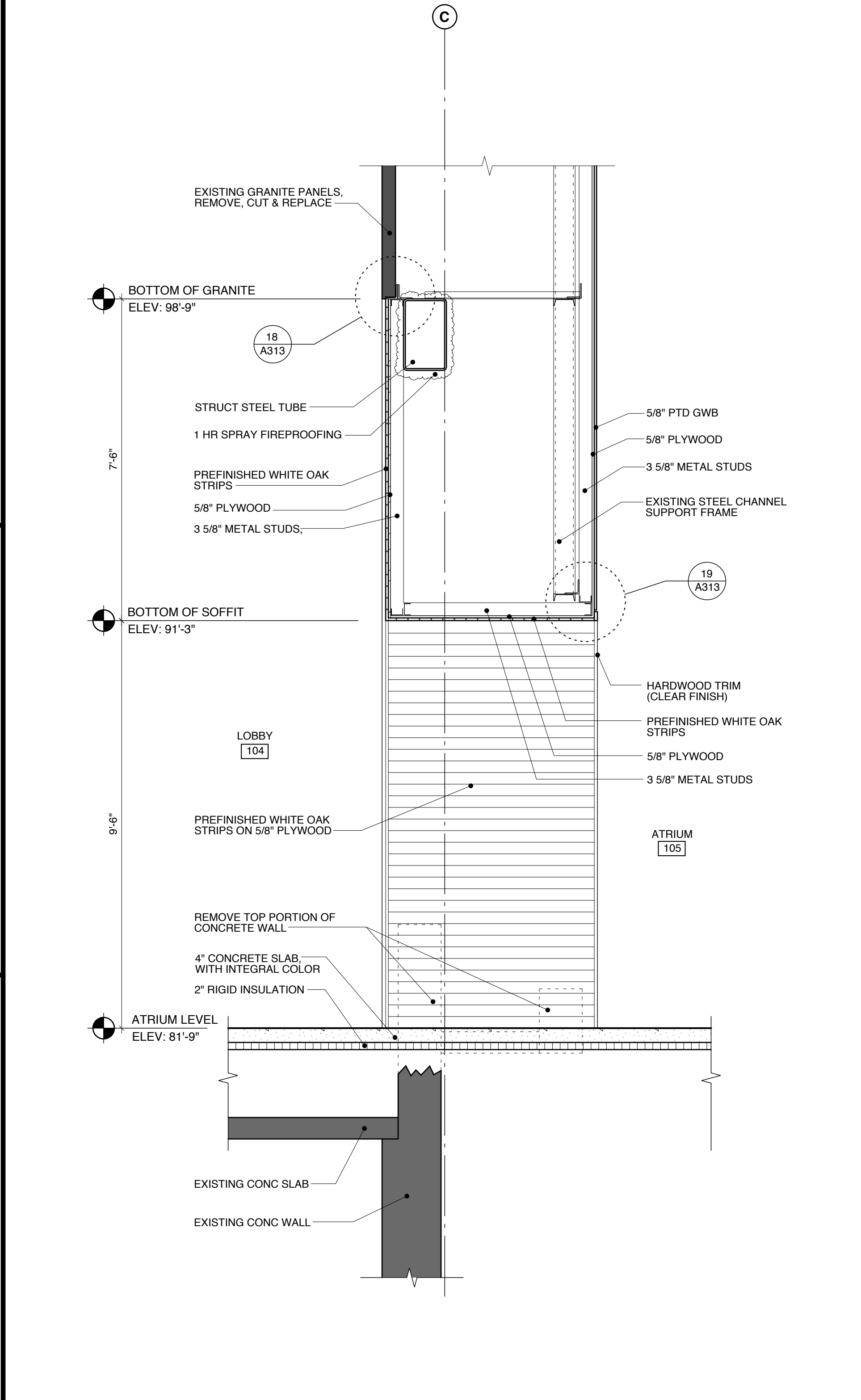
5 WINDOW HEAD & JAMB DETAILS  
SCALE: 3" = 1'-0"



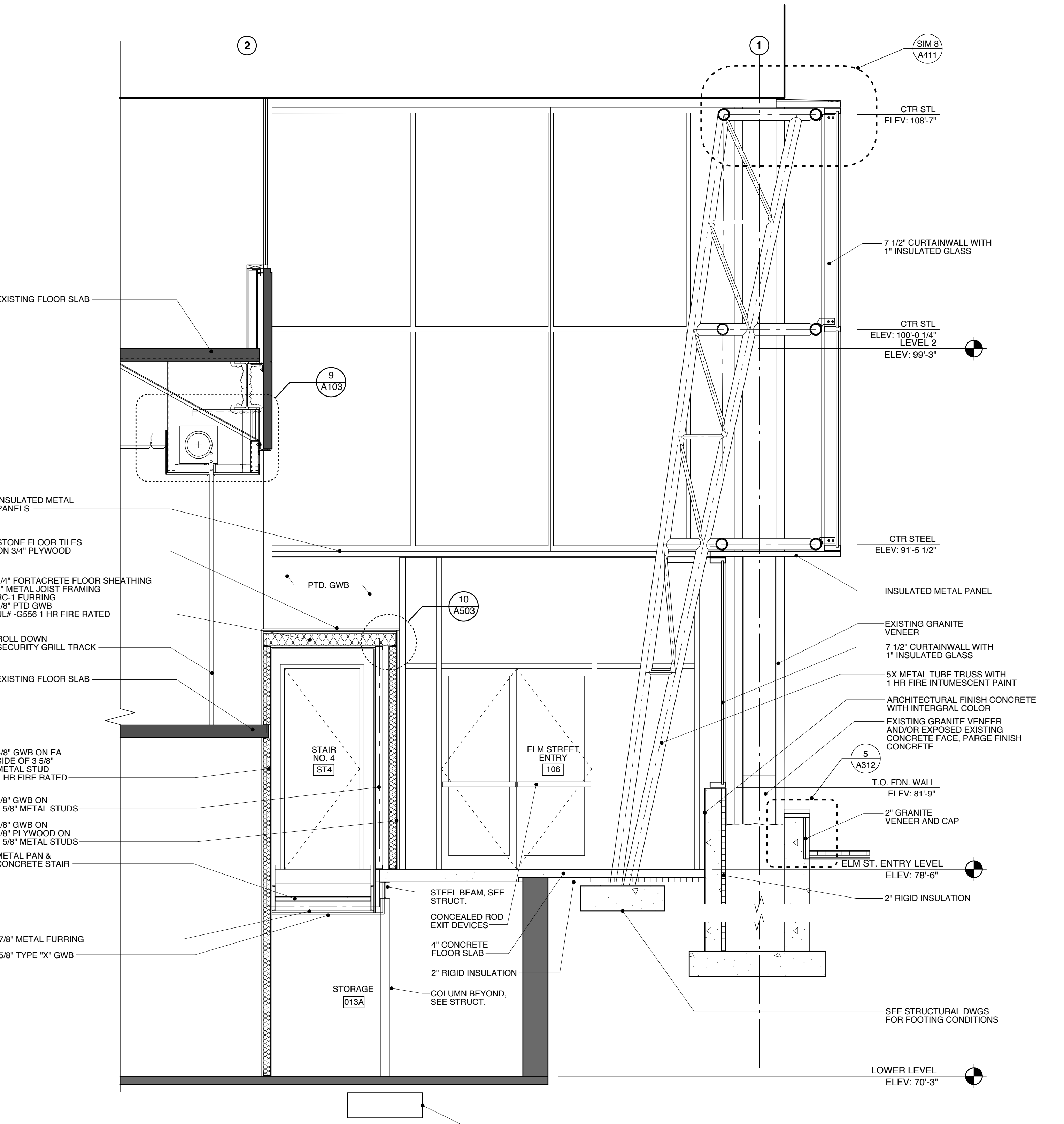
6 WINDOW SILL DETAIL  
SCALE: 3" = 1'-0"



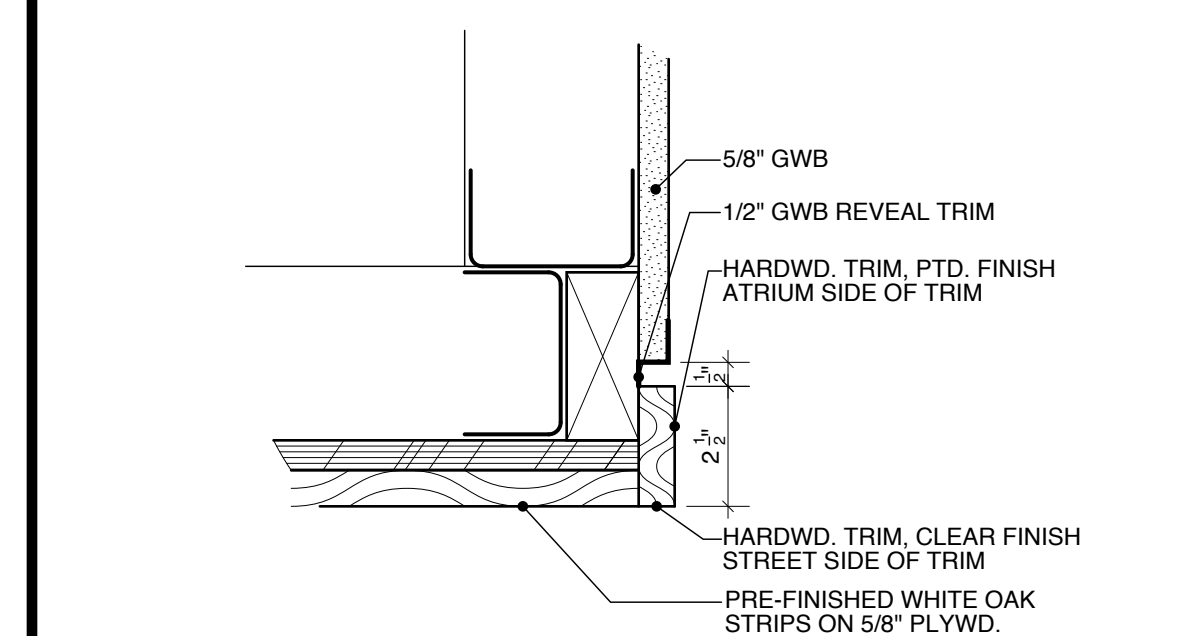
13 PLAN DETAIL: GLASS AT RINES AUDITORIUM  
SCALE: 3" = 1'-0"



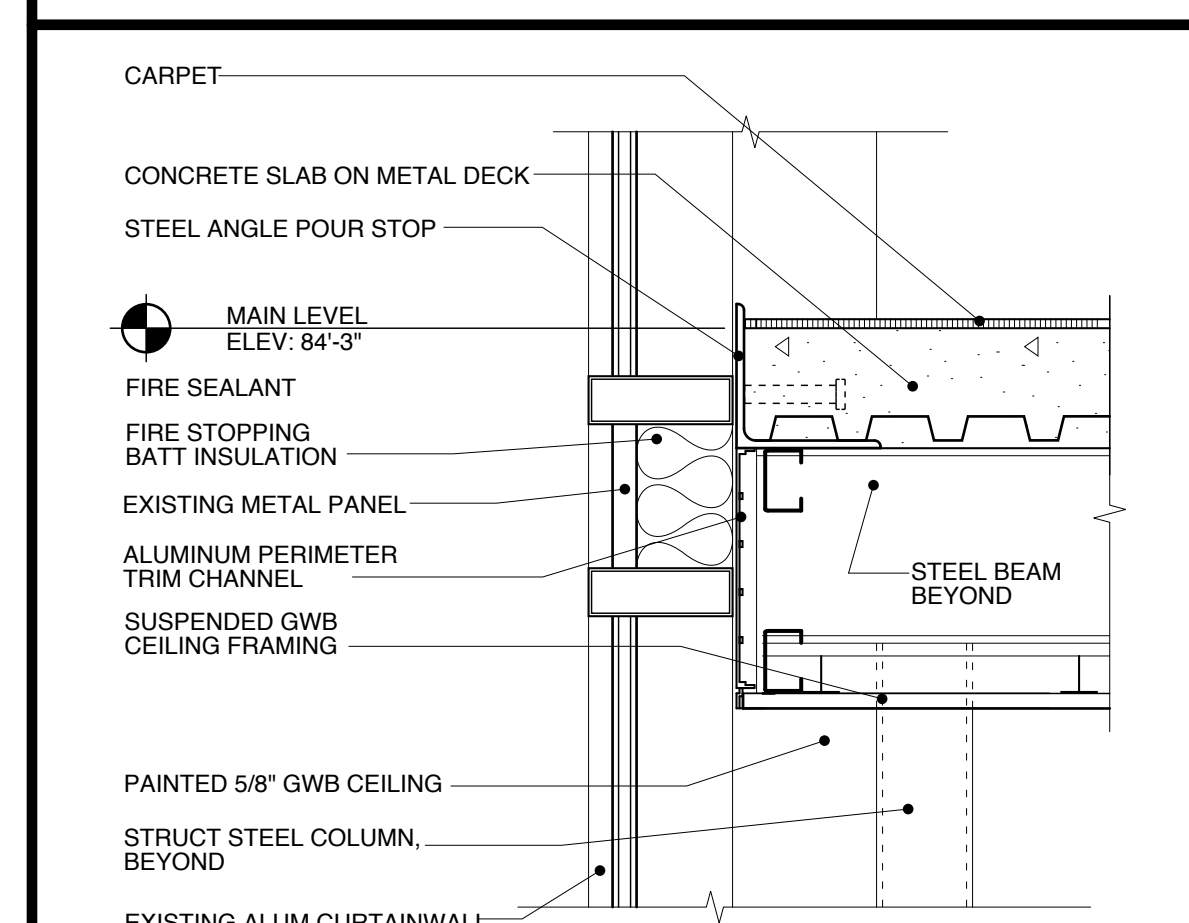
14 INTERIOR WALL SECTION  
SCALE: 1/2" = 1'-0"



15 WALL SECTION  
SCALE: 3/8" = 1'-0"



19 SOFFIT SECTION DETAIL  
SCALE: 3" = 1'-0"



20 SOFFIT SECTION DETAIL  
SCALE: 1 1/2" = 1'-0"

PROJECT  
**Portland Public Library  
Addition / Renovation**  
5 MONUMENT SQUARE  
PORTLAND, ME

SSA  
Scott Simons Architects  
75 York Street  
Portland, Maine 04101  
tel: 207.772.4556  
fax: 207.628.4556  
web: www.ssimonsarchitects.com

TITLE  
**WALL SECTIONS**

THIS DRAWING IS THE PROPERTY OF SCOTT SIMONS ARCHITECTS AND IS NOT TO BE COPIED OR REPRODUCED IN PART OR WHOLE.

STATUS:  
**ISSUED FOR BIDDING**  
CONSTRUCTION DOCUMENTS

DATE:  
02.13.2009

SCALE:  
3/8" = 1'-0"

PROJECT NO.  
2008-0030

DRAWN BY:  
SJE

DWG NO.  
**A313**

REVISION / DATE:

SCOTT R. SIMONS  
NO. 2034  
STATE OF MAINE  
LICENSED ARCHITECT

2008 © Scott Simons Architects