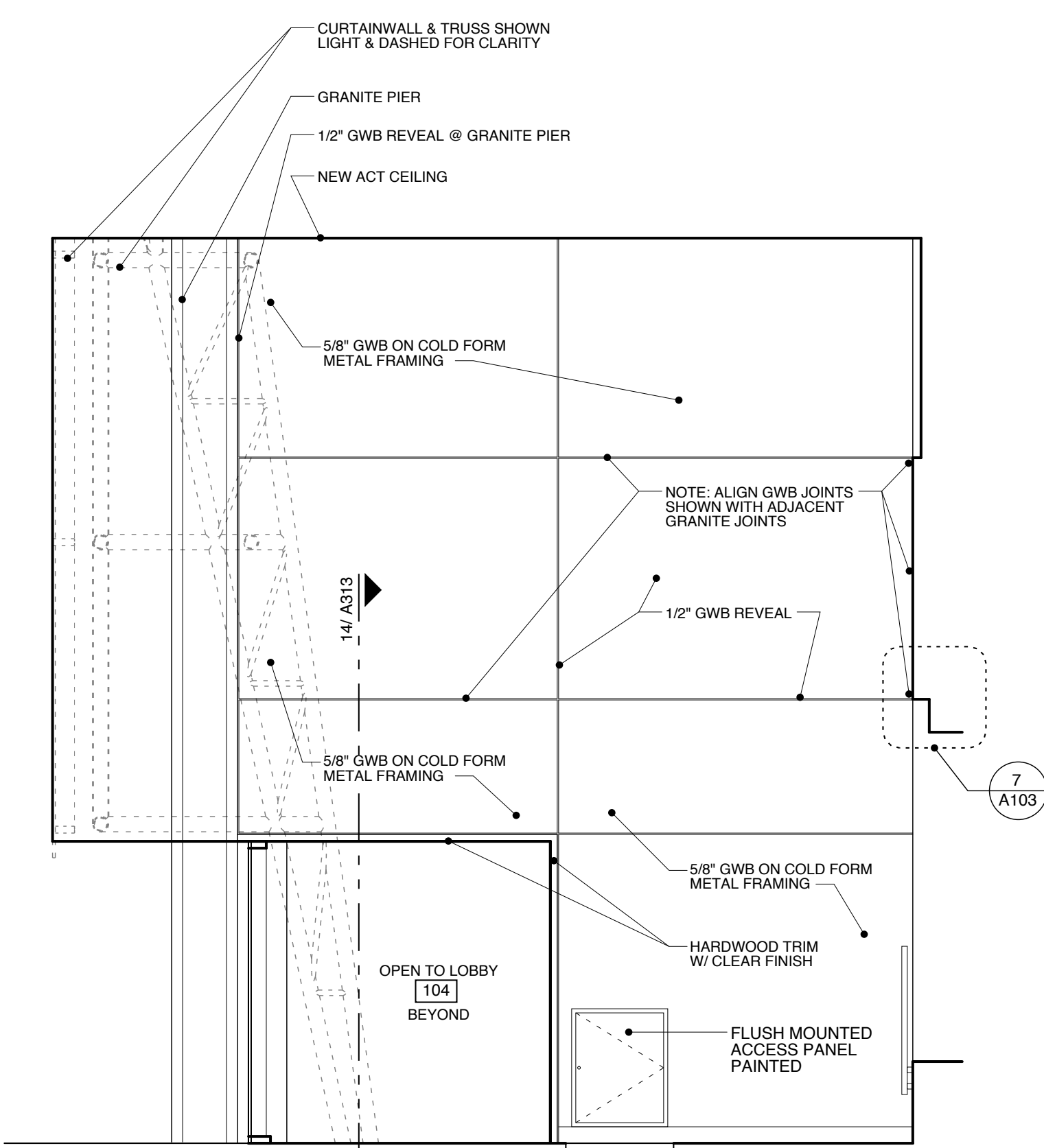
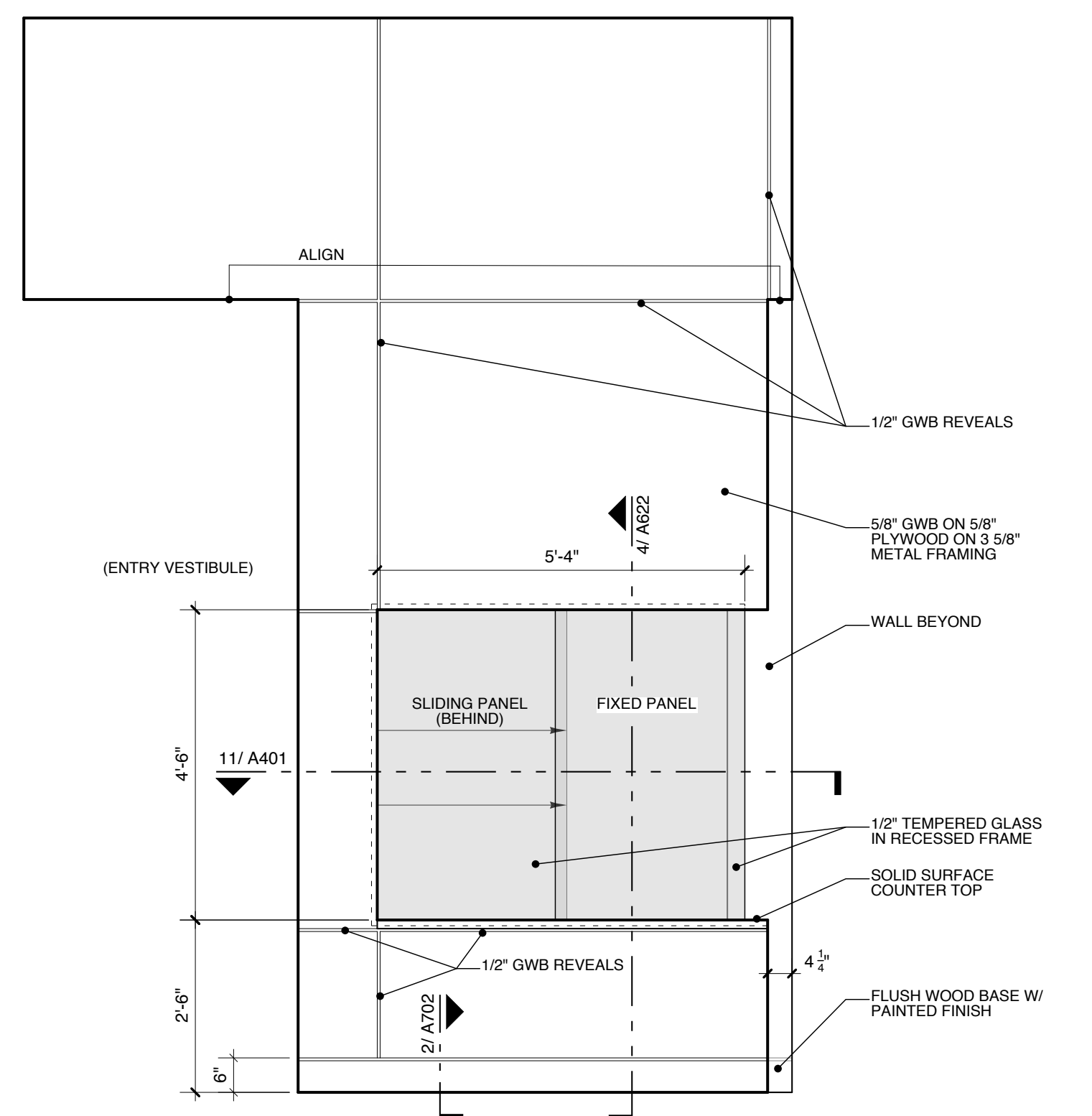


1 SOUTH - NORTH SECTIONAL ELEVATION
SCALE: 1/8" = 1'-0"



2 WEST WALL ELEVATION AT ATRIUM 105
SCALE: 1/2" = 1'-0"



3 WALL ELEVATION AT SECURITY WINDOW 103
SCALE: 1/2" = 1'-0"

- EXISTING GRANITE PANEL TO REMAIN
- EXISTING GRANITE PANEL TO BE REMOVED
- EXISTING GRANITE PANEL TO BE REMOVED AND REINSTALLED



Scott Simons Architects
75 York Street
Portland, Maine 04101
Tel: 207 772 4555
Fax: 207 628 4555
web: www.simonsarchitects.com

PROJECT
**Portland Public Library
Addition / Renovation**

5 MONUMENT SQUARE
PORTLAND, ME

TITLE
**SOUTH - NORTH
SECTIONAL
ELEVATIONS**

THIS DRAWING IS THE PROPERTY OF
SCOTT SIMONS ARCHITECTS
AND IS NOT TO BE COPIED OR
REPRODUCED IN PART OR WHOLE.



STATUS:
ISSUED FOR BIDDING
CONSTRUCTION DOCUMENTS

DATE: 02.13.2009
SCALE:
PROJECT NO: 2008-0030
DRAWN BY:
DWG NO: **A204**

REVISION / DATE:
2009 © Scott Simons Architects