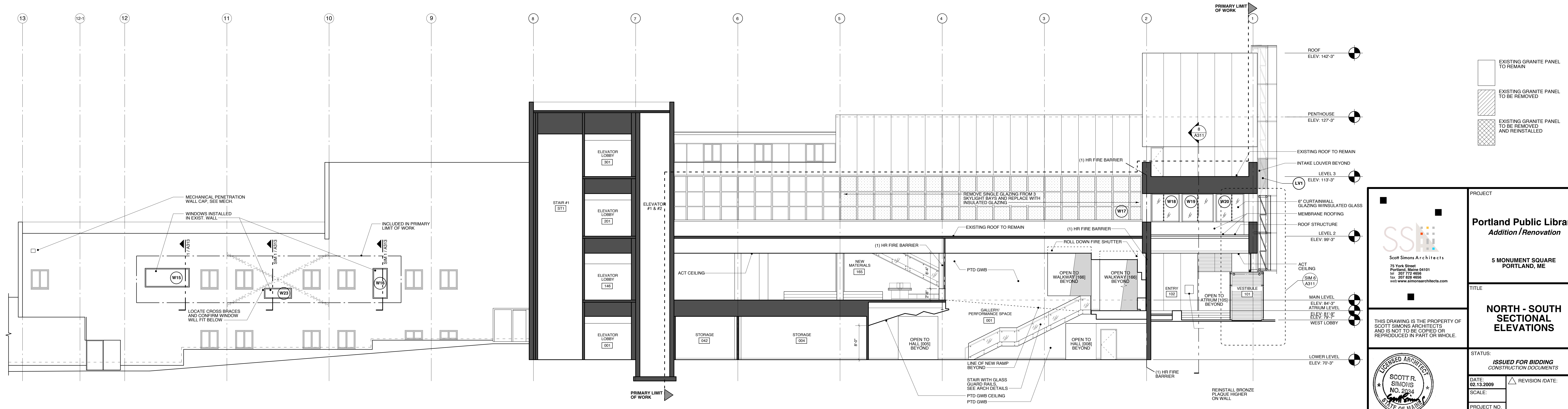

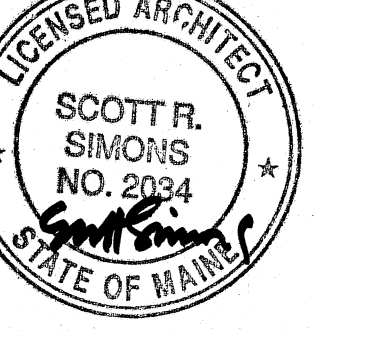


1 NORTH - SOUTH SECTIONAL ELEVATION
A102 SCALE: 1/8" = 1'-0"



2 NORTH - SOUTH SECTIONAL ELEVATION
A102 SCALE: 1/8" = 1'-0"

 Scott Simons Architects 75 York Street Portland, Maine 04101 Tel: 207 772 4556 Fax: 207 628 4556 www.scottsimonsarchitects.com	PROJECT Portland Public Library Addition / Renovation 5 MONUMENT SQUARE PORTLAND, ME
	TITLE NORTH - SOUTH SECTIONAL ELEVATIONS
THIS DRAWING IS THE PROPERTY OF SCOTT SIMONS ARCHITECTS AND IS NOT TO BE COPIED OR REPRODUCED IN PART OR WHOLE.	STATUS: ISSUED FOR BIDDING CONSTRUCTION DOCUMENTS
	DATE: 02.13.2009 SCALE: PROJECT NO: 2008-0030 DRAWN BY: DWG NO.: A202