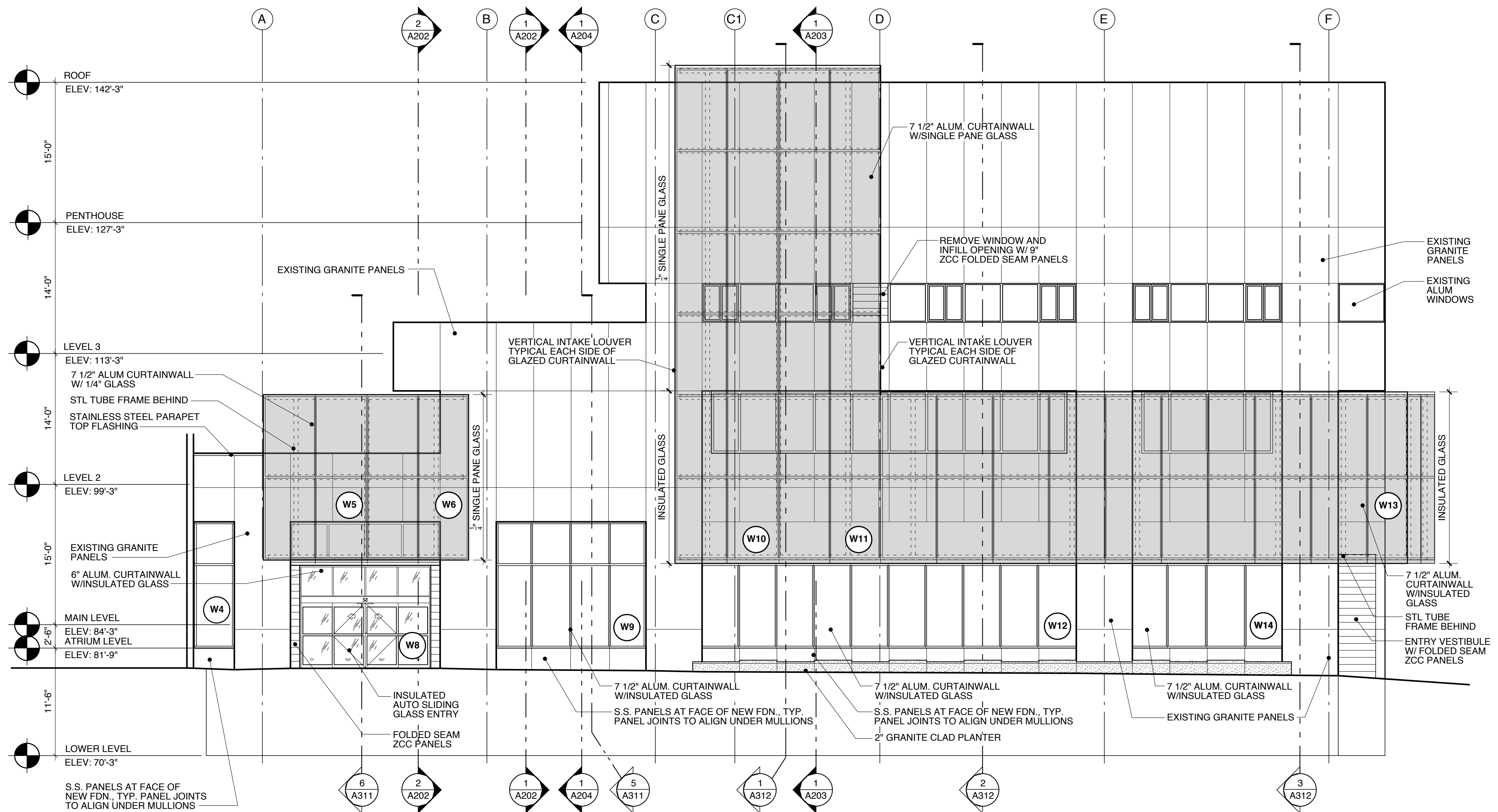


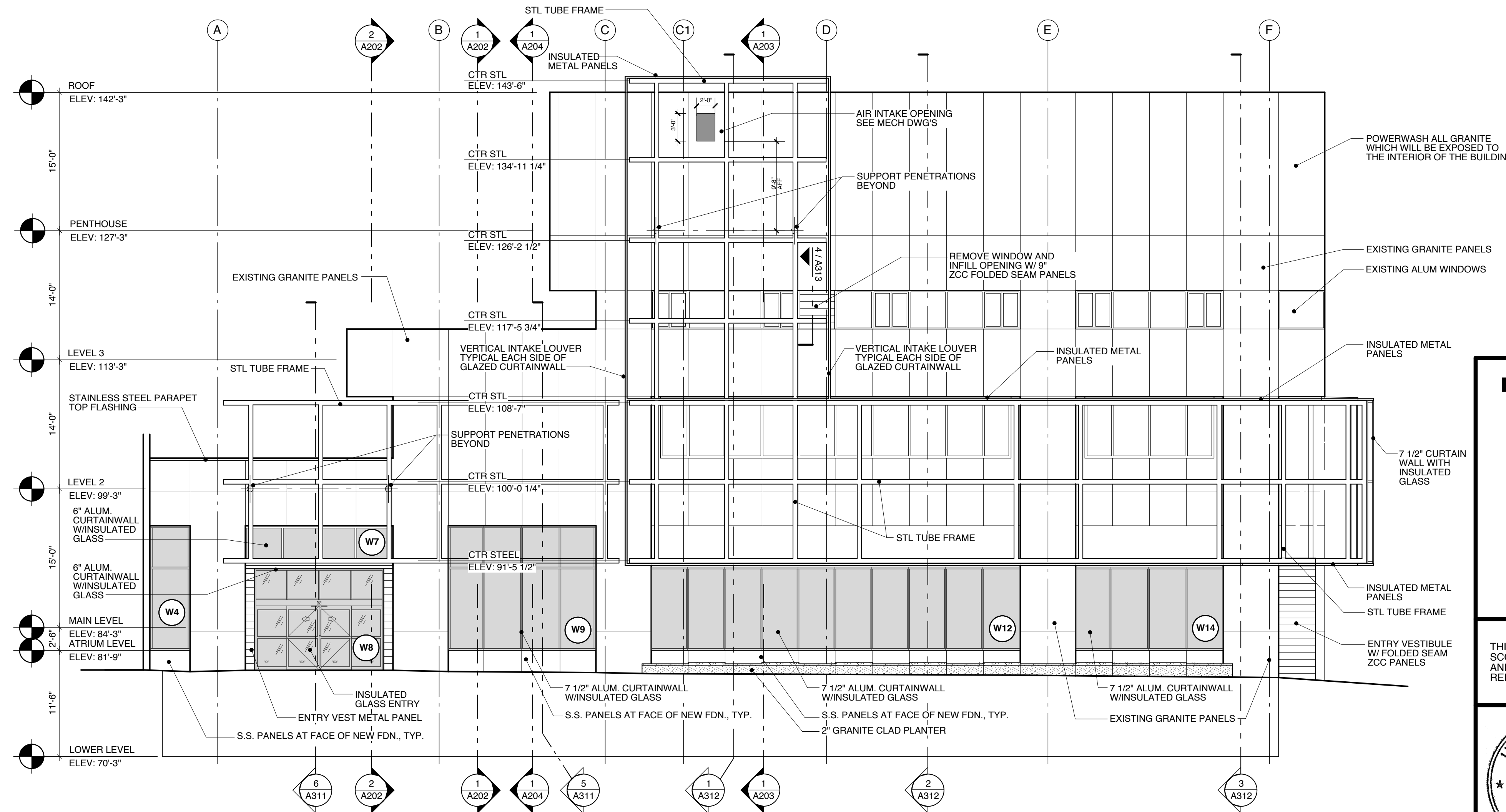
1 EAST ELEVATION

A102 SCALE: 1/8" = 1'-0"



2 SOUTH ELEVATION

A102 SCALE: 1/8" = 1'-0"

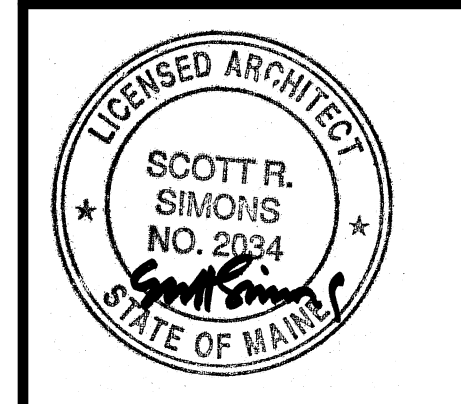


3 SOUTH ELEVATION W/O CURTAINWALL

A102 SCALE: 1/8" = 1'-0"

- EXISTING GRANITE PANEL TO REMAIN
- EXISTING GRANITE PANEL TO BE REMOVED
- EXISTING GRANITE PANEL TO BE REMOVED AND REINSTALLED

 Scott Simons Architects <small>75 York Street Portland, Maine 04101 Tel: 207.772.4555 Fax: 207.628.4555 www.scottsimonsarchitects.com</small>	PROJECT <b>Portland Public Library Addition / Renovation</b>
	5 MONUMENT SQUARE PORTLAND, ME
TITLE <b>EAST AND SOUTH ELEVATIONS</b>	STATUS: <b>ISSUED FOR BIDDING</b> CONSTRUCTION DOCUMENTS
DATE: 02.13.2009	REVISION / DATE:
SCALE:	
PROJECT NO: 2008-0030	DRAWN BY:
DWG NO. <b>A201</b>	2009 © Scott Simons Architects



THIS DRAWING IS THE PROPERTY OF SCOTT SIMONS ARCHITECTS AND IS NOT TO BE COPIED OR REPRODUCED IN PART OR WHOLE.