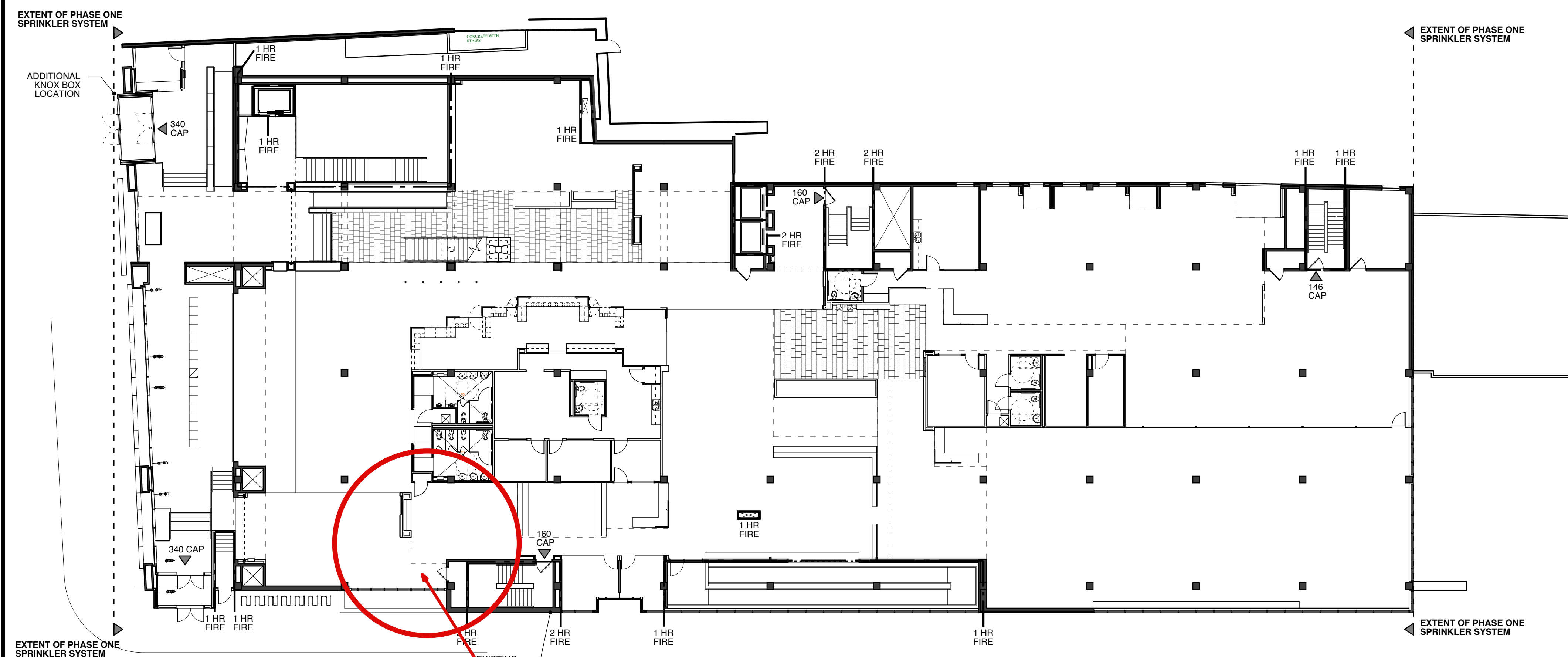
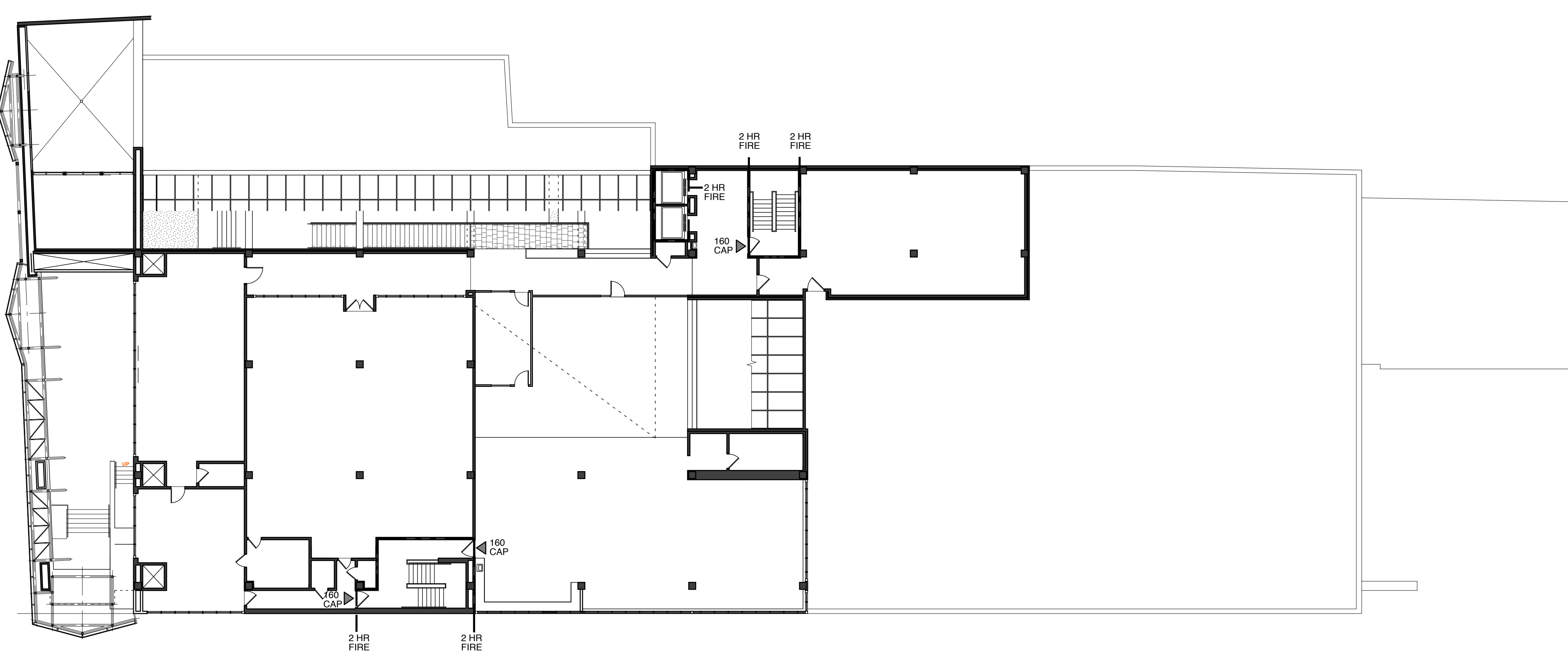


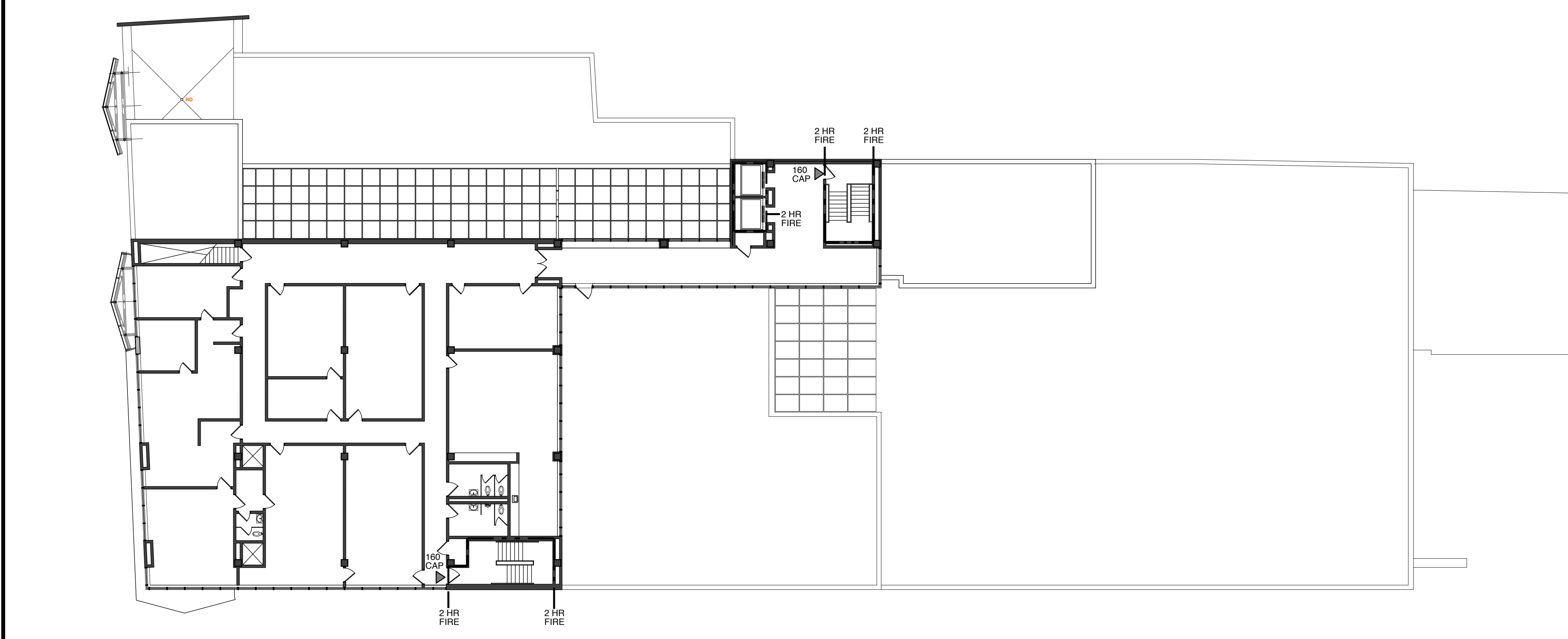
1 CODE PLAN - LOWER LEVEL (799 OCCUPANTS)
SCALE: 1/16" = 1'-0"



2 CODE PLAN - MAIN LEVEL (499 OCCUPANTS)
SCALE: 1/16" = 1'-0"



3 CODE PLAN - LEVEL 2 (177 OCCUPANTS)
SCALE: 1/16" = 1'-0"

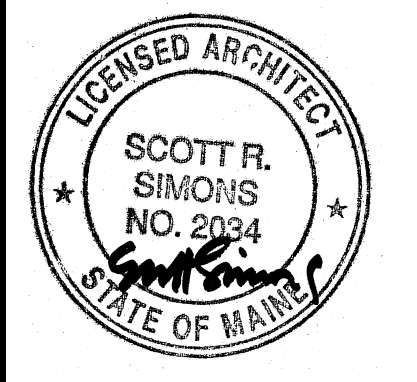


4 CODE PLAN - LEVEL 3 (150 OCCUPANTS)
SCALE: 1/16" = 1'-0"

CODE NOTES
LIST OF APPLICABLE CODES
 2003 INTERNATIONAL BUILDING CODE (IBC)
 2003 INTERNATIONAL MECHANICAL CODE
 1999 & 2008 NATIONAL ELECTRICAL CODE
 MAINE STATE PLUMBING CODE (MSIPC)
 2003 INTERNATIONAL ENERGY CONSERVATION CODE
 1997 & 2006 NFPA 1, NATIONAL FIRE CODE
 2000 & 2006 NFPA 101, LIFE SAFETY CODE (NFPA 101)
 2002 NFPA 90A, AIR CONDITIONING AND VENTILATING SYSTEMS
 ACCESSIBILITY REGULATIONS OF THE MAINE HUMAN RIGHTS COMMISSION (ADAAG)
 1991 AMERICAN WITH DISABILITIES ACT/ADAAG AS AMENDED THROUGH 1994
 2005 NFPA 909 CULTURAL RESOURCES PROPERTIES - MUSEUMS, LIBRARIES AND PLACES OF WORSHIP
CODE ITEMS
 OCCUPANCY CLASSIFICATION: A-1, A-3 AND B MIXED USE
 AREA: 29,739 SQ FT
 HEIGHT: FOUR STORIES, 54'-0"
 OPEN FRONTAGE: > 50%
 SPRINKLERS: PARTIAL SPRINKLERS IN PHASE ONE (AS APPROVED BY LOCAL AND STATE AFI)
 BUILDING CONSTRUCTION TYPE: TYPE IIA (II-111 NFPA) (AS APPROVED BY LOCAL AND STATE AFI)
 FIRE RATING: 1 HOUR RATED STRUCTURE PER TYPE IIA (II-111 NFPA) STANDARDS
 ELEVATOR: 24" X 80" STRETCHER CAPACITY



THIS DRAWING IS THE PROPERTY OF SCOTT SIMONS ARCHITECTS AND IS NOT TO BE COPIED OR REPRODUCED IN PART OR WHOLE.



PROJECT
Portland Public Library
Addition / Renovation
 5 MONUMENT SQUARE
 PORTLAND, ME

TITLE
CODE PLANS

STATUS:
ISSUED FOR BIDDING
 CONSTRUCTION DOCUMENTS

DATE: 02.13.2009
 SCALE: REVISION DATE: REVISOR: FOR TEEN SERVICES PARTITION

PROJECT NO.: 2008-0039
 DRAWN BY: 2008 © Scott Simons Architects

DWG NO.: **A001**