

POWERPAY OFFICE FIT UP

Winton Scott
Architects
5 Milk Street
Portland, ME 04101

Wright Ryan
Construction, Inc.
10 Danforth Street
Portland, ME 04101

Becker Structural
Engineers, Inc.
75 York Street
Portland, Maine 04101

Mechanical Systems
Engineers
10 Royal River Center
Yarmouth, Maine 04096

Bartlett Design
942 Washington St.
Bath, Maine 04530

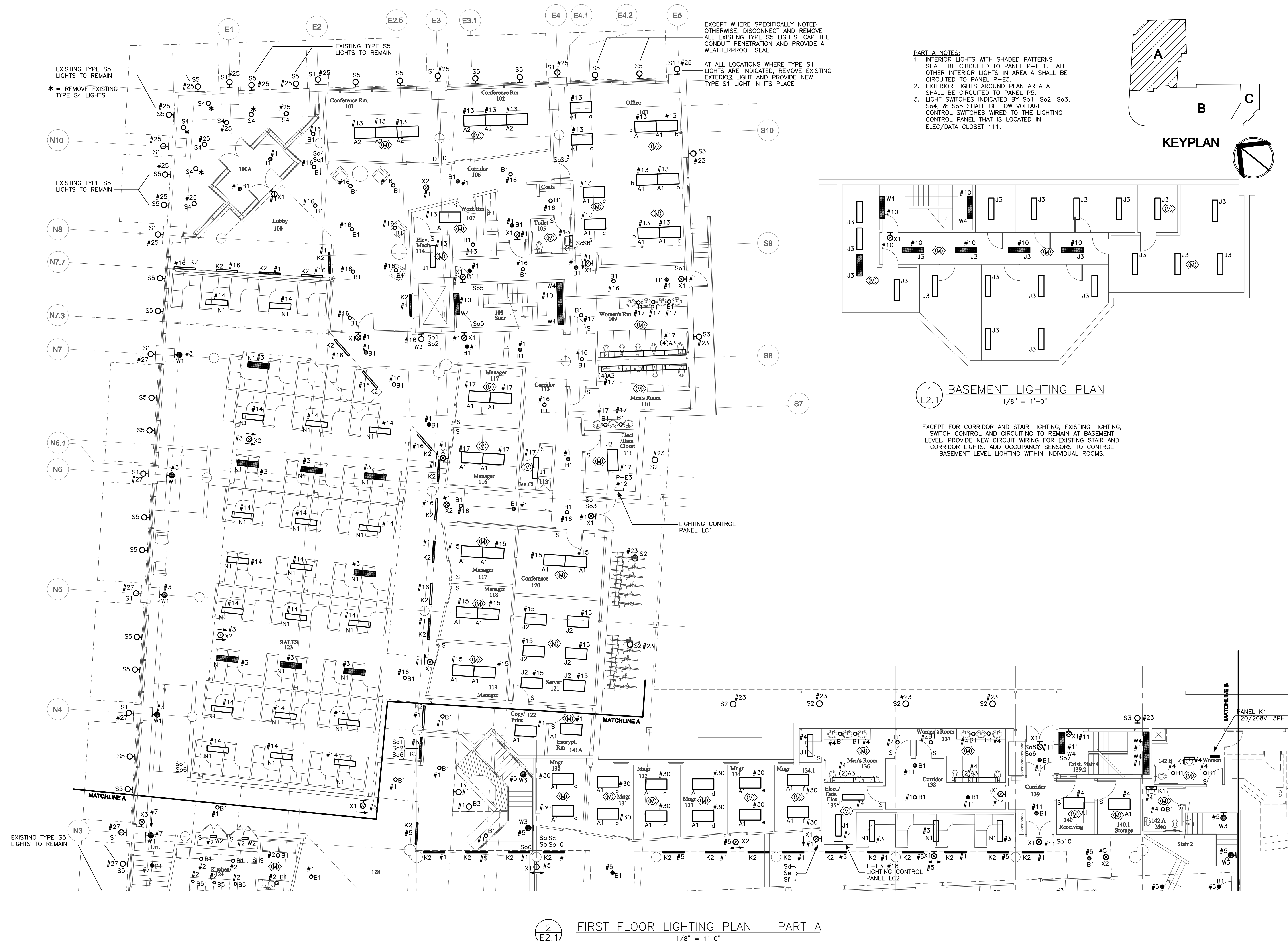
Fore Solutions
386 Fore Street
Portland, Maine 04101

FIRST FLOOR LIGHTING PLAN-PART A

E2.1

Include all revisions and changed up
to and including 10-28-09

Scale: 1/8" = 1'-0" Date: 03-20-09



2 FIRST FLOOR LIGHTING PLAN - PART A
1/8" = 1'-0"