

POWERPAY OFFICE FIT UP

Winton Scott Architects
5 Milk Street
Portland, ME 04101

Wright Ryan Construction, Inc.
10 Danforth Street
Portland, ME 04101

Becker Structural Engineers, Inc.
75 York Street
Portland, Maine 04101

Mechanical Systems Engineers
10 Royal River Center
Yarmouth, Maine 04096

Bartlett Design
942 Washington St.
Bath, Maine 04530

Fore Solutions
386 Fore Street
Portland, Maine 04101

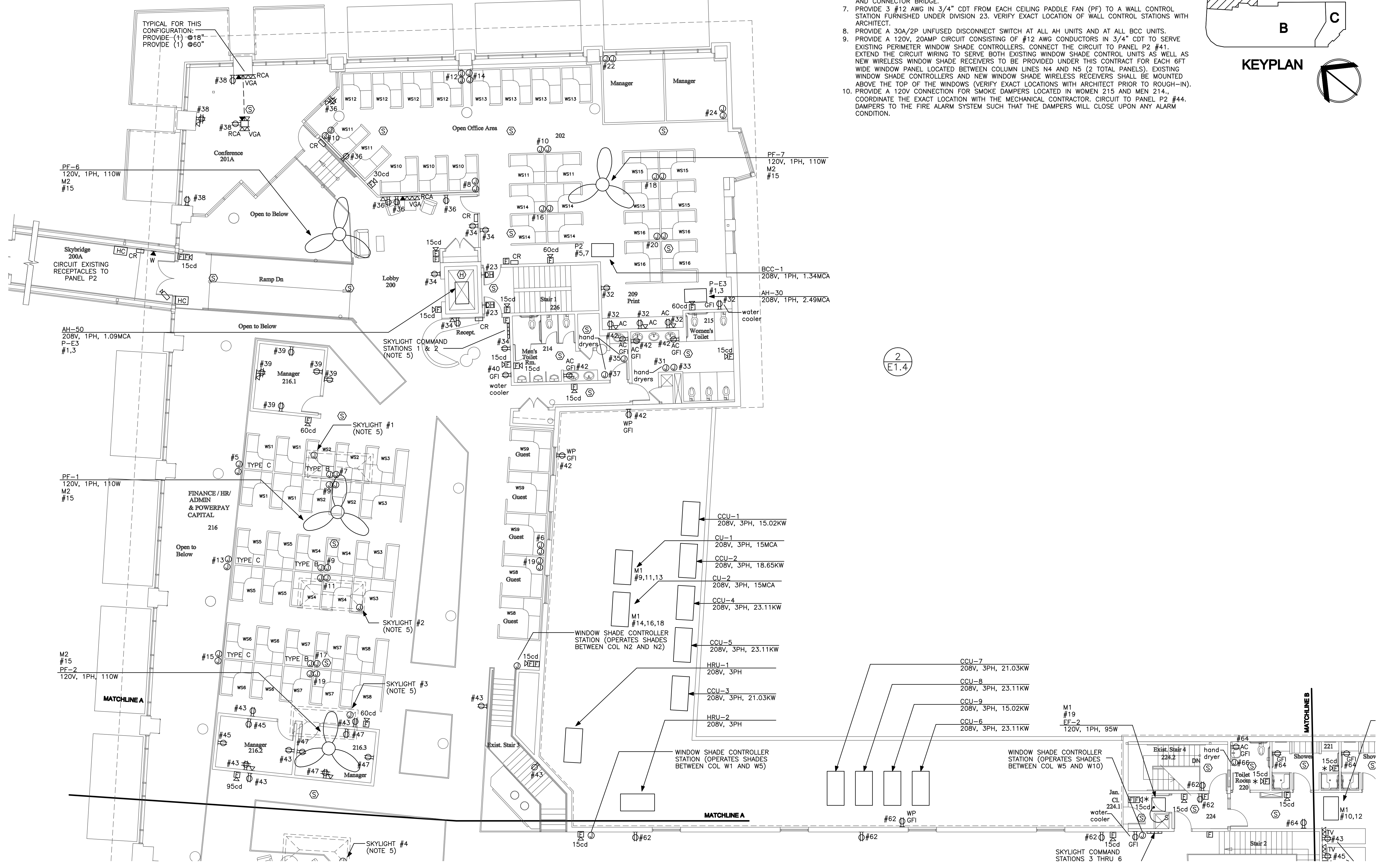
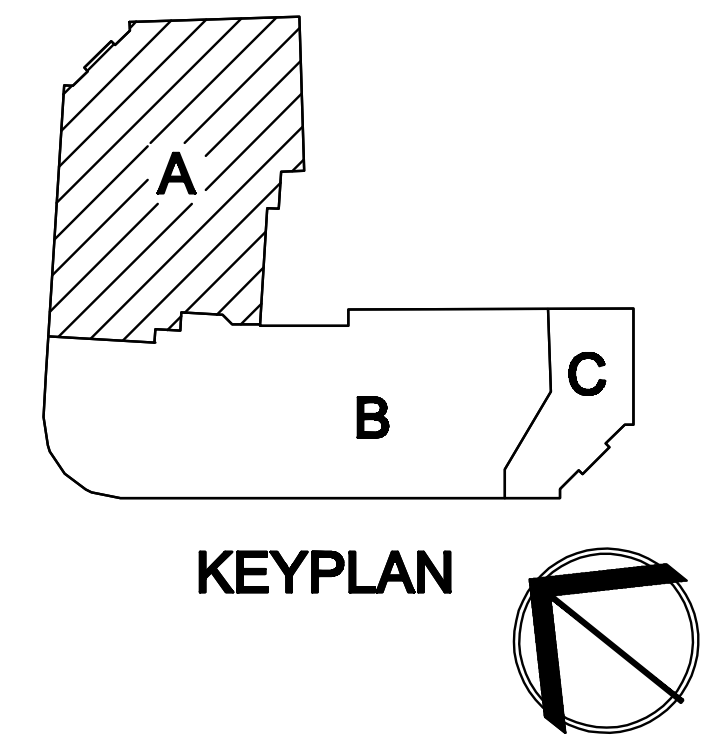
SECOND FLOOR POWER PLAN-PART A

E1.4

Includes all revisions and changed up to and including 10-28-09

Scale: 1/8" = 1'-0" Date: 03-20-09

- NOTES:
1. CIRCUIT DESIGNATIONS LOCATED IN PLAN AREA A REFER TO PANEL P2.
 2. VOICE/DATA WIRING FROM OUTLETS SHALL BE EXTENDED TO NETWORK SWITCHES LOCATED IN THE CEILING SPACE BETWEEN THE FIRST FLOOR AND THE MEZZANINE. NETWORK SWITCHES TO BE PROVIDED BY OWNER'S CONSULTANT. COORDINATE AS REQUIRED.
 3. WORKSTATIONS LOCATED IN PLAN AREA A SHALL BE CIRCUITED TO PANEL P2.
 4. SEE SHEET E1.1 FOR FURNITURE, PARTITION WIRING KEY.
 5. SEE THIS SHEET FOR SKYLIGHT ANNING WINDOW ELECTRIC WIRING DIAGRAM.
 6. PROVIDE HANDICAP DOOR CONTROLS, DOOR ACCESS CARD READER, DOOR REQUEST-TO-EXIT DEVICE, DOOR POSITION SWITCH, AND DOOR INTERCOM STATION AT DOOR BETWEEN PARKING GARAGE AND CONNECTOR BRIDGE.
 7. PROVIDE 3 #12 AWG IN 3/4" CDT FROM EACH CEILING PADDLE FAN (PF) TO A WALL CONTROL STATION FURNISHED UNDER DIVISION 23. VERIFY EXACT LOCATION OF WALL CONTROL STATIONS WITH ARCHITECT.
 8. PROVIDE A 30A/2P UNFUSED DISCONNECT SWITCH AT ALL AH UNITS AND AT ALL BCC UNITS.
 9. PROVIDE A 120V, 20AMP CIRCUIT CONSISTING OF #12 AWG CONDUCTORS IN 3/4" CDT TO SERVE EXISTING PERIMETER WINDOW SHADE CONTROLLERS. CONNECT THE CIRCUIT TO PANEL P2 #41. EXTEND THE CIRCUIT WIRING TO SERVE BOTH EXISTING WINDOW SHADE CONTROL UNITS AS WELL AS NEW WIRELESS WINDOW SHADE RECEIVERS TO BE PROVIDED UNDER THIS CONTRACT FOR EACH 6FT WIDE WINDOW PANEL LOCATED BETWEEN COLUMN LINES N4 AND N5 (2 TOTAL PANELS). EXISTING WINDOW SHADE CONTROLLERS AND NEW WINDOW SHADE WIRELESS RECEIVERS SHALL BE MOUNTED ABOVE THE TOP OF THE WINDOWS (VERIFY EXACT LOCATIONS WITH ARCHITECT PRIOR TO ROUGH-IN).
 10. PROVIDE A 120V CONNECTION FOR SMOKE DAMPERS LOCATED IN WOMEN 215 AND MEN 214. COORDINATE THE EXACT LOCATION WITH THE MECHANICAL CONTRACTOR. CIRCUIT TO PANEL P2 #44. DAMPERS TO THE FIRE ALARM SYSTEM SUCH THAT THE DAMPERS WILL CLOSE UPON ANY ALARM CONDITION.



1 SECOND FLOOR POWER PLAN - PART A
E1.4 1/8" = 1'-0"