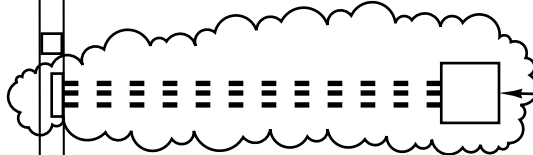


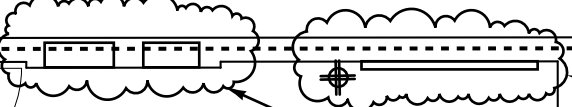
Conference

Rm 120



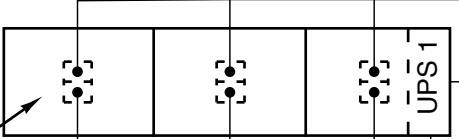
INSTALL NEW RECESSED FLOOR OUTLET W/ CONDUIT INTO HIGH AND LOW WALL BOXES SIMILAR TO INSTALLATION AT OTHER CONFERENCE ROOMS EXCEPT CHANGE (1) CONDUIT TO 2" DIA. TO ACCOMODATE VGA CABLES WITH CONNECTORS

Liebert A.C. Unit



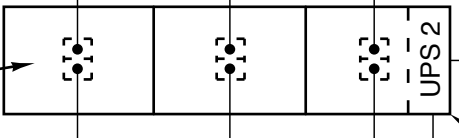
ADD A 20AMP CIRCUIT CONNECTED TO GENERATOR WITH A QUAD OUTLET. MOUNT OUTLET AT 6' ABOVE THE RAISED COMPUTER RM. FLOOR JUST LEFT OF THE BACKERBOARD.

LOCATE LIGHT FIXTURES AT AISLES BETWEEN DATA RACKS.



REMOVE ELECTRICAL PANELS AND GWB BUILDOUT AT EXTERIOR WALL AND RELOCATE TO INTERIOR WALL AS LAYED OUT IN THE FIELD

NOTE: RACKS ARE LOCATED UP AGAINST EXTERIOR WALL. THEY ARE DRAWN OFF OF THE WALL FOR VISUAL CLARITY



THE OWNER INTENDS TO UTILIZE (2) UPS UNITS - (1) THAT THEY CURRENTLY OWN THAT WILL BE RELOCATED AND (1) NEW. THE UNITS WILL BE LOCATED IN THE BOTTOM OF THE FIRST RACK IN EACH ROW AS SHOWN. THE INTENT IS TWO PROVIDE EACH OF THE (6) DATA RACKS WITH A FEED FROM BOTH UPS 1 & 2 - (12) FEEDS TOTAL. EACH FEED WILL RUN UNDER THE RAISED FLOOR USING FLEX CABLE AND COME THROUGH THE FLOOR TO FEED A DUPLEX BOX ON TOP OF THE FLOOR AT THE BASE OF EACH RACK. OUTLET TYPE IS NEMA 5-20R

Server Rm

121

Liebert A.C. Unit