

CONTRACTOR NOTE:

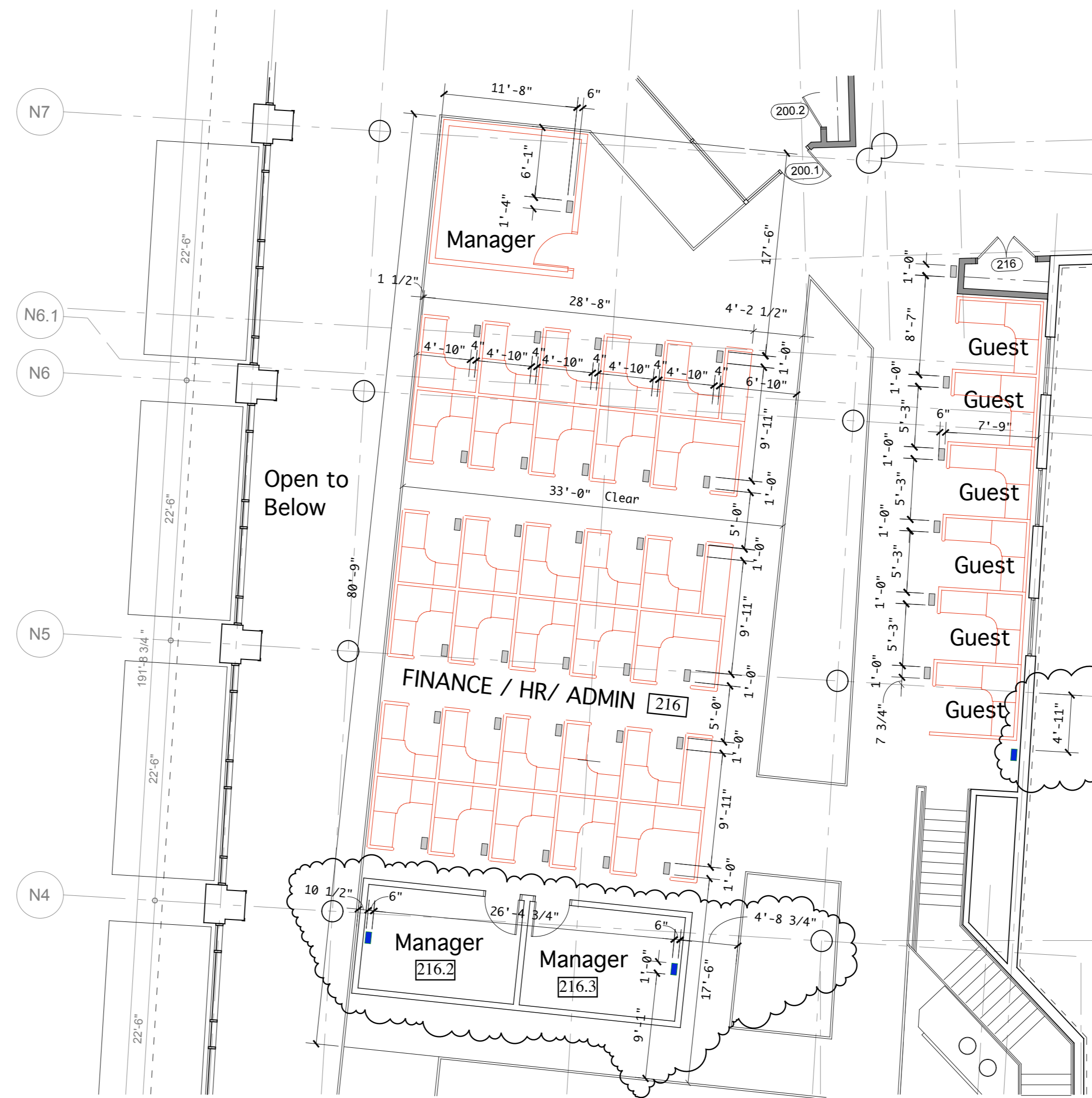
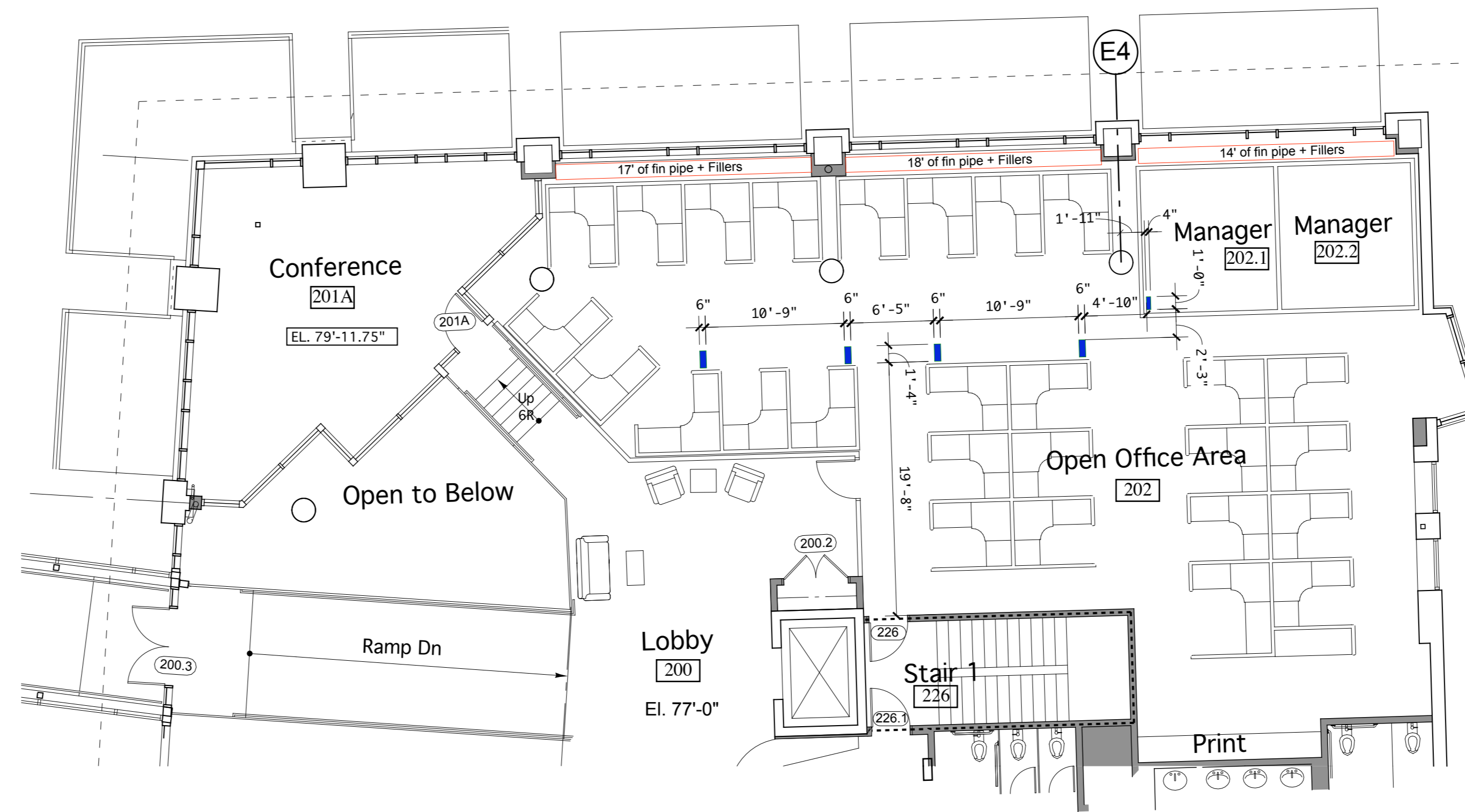
FLOOR GRILLES LOCATED AT OFFICES 201, 203.1, 203, 205, AND 206 REQUIRE STEEL REINFORCEMENT FRAMES PER SKS 32 DATED 9/28/09.

LOCATE FLOOR GRILLES AT OFFICES AS CLOSE TO EXTERIOR WALL AS POSSIBLE

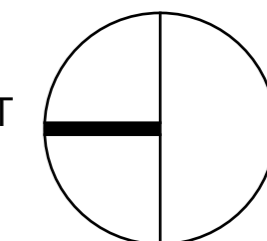
Centerline of pane of glass

CONTRACTOR NOTE:

FLOOR GRILLES ARE SHOWN ON THIS PLAN AS SIZE CALLED OUT ON MECHANICAL DRAWINGS. CONTRACTOR TO VERIFY EXACT DIMENSIONS OF UNITS TO BE INSTALLED AND SIZE ROUGH OPENING ACCORDINGLY.



PROJECT NORTH



**POWERPAY
OFFICE FIT UP**

**Winton Scott
Architects**
5 Milk Street
Portland, ME 04101

**Wright Ryan
Construction, Inc.**
10 Danforth Street
Portland, ME 04101

**Becker Structural
Engineers, Inc.**
75 York Street
Portland, Maine 04101

**Mechanical
Systems
Engineers**
10 Royal River Center
Yarmouth, Maine 04096

Bartlett Design
942 Washington Ave.
Bath, Maine 04530

Fore Solutions
386 Fore Street
Portland, Maine 04101

SECOND FLOOR
GRILLE LOCATIONS

**ASK
44**