

Corridor

Receiving

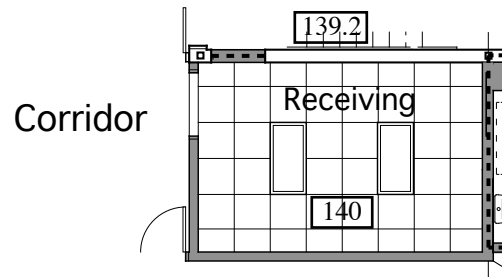
140

139.2

REMOVE PARTITION BETWEEN ROOMS 140 AND 140.1 TO CREATE LARGER RECEIVING ROOM. DELETE DOOR 140.1 AND MOVE CARD READER TO DOOR 140. DELETE ALL MILLWORK SCHEDULED FOR RECEIVING. DELETE ABOVE COUNTER OUTLETS -RESPACE WALL OUTLETS PER CODE.

DELETE ALL DATA OUTLETS EXCEPT ONE NEAR THE DOOR. POWERPAY WILL DIRECT THEIR DATA CONTRACTOR ACCORDINGLY.

PLAN



Corridor

Receiving

140

139.2

CEILING PLAN