

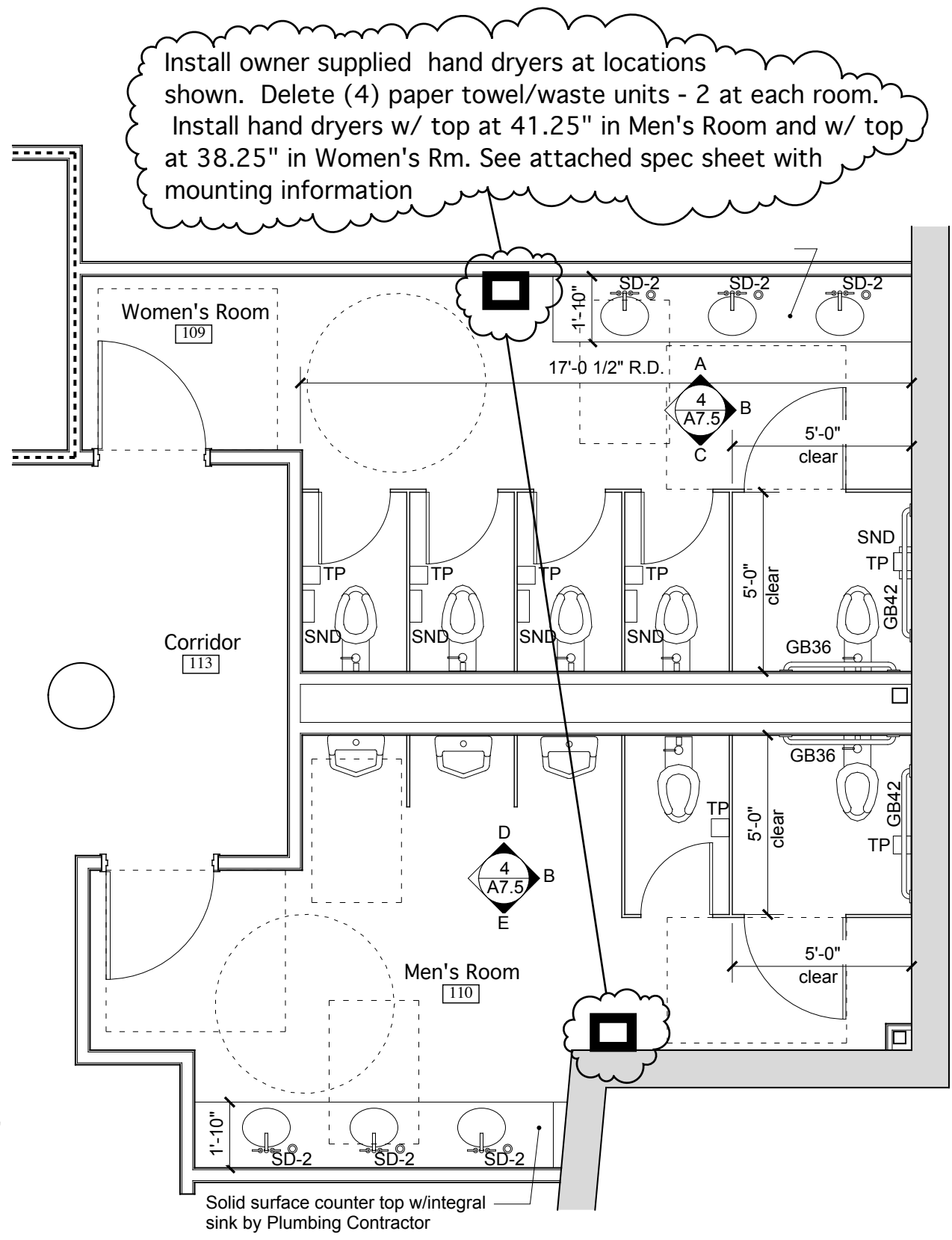
Add (1) A3 light fixture as shown

Revise Toilet stall as shown. Provide full Ht. Type 1A dividing partition @ adjacent stall. Provide standard toilet partition door.

Revise urinal spacing to provide 2'-7" clear wide stalls instead of 2'-9"

Revise Lavatory countertop from 6'-0" length to 5'-0" length

Install owner supplied hand dryers at locations shown. Delete (1) paper towel/waste unit originally scheduled for this location at each room. Second paper towel/ waste unit shown in each room to remain. Install hand dryers w/ top at 41.25" in Men's Room and w/ top at 38.25" in Women's Rm. See attached spec sheet with mounting information

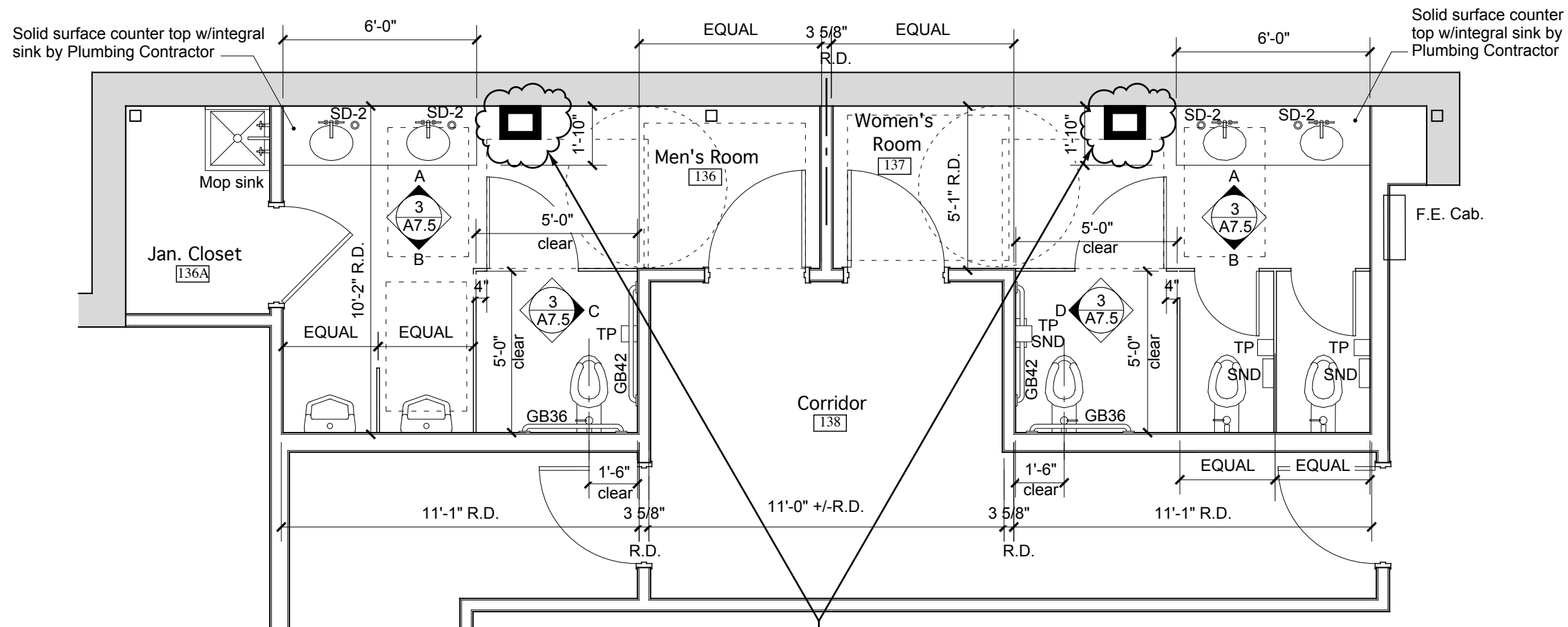


Install owner supplied hand dryers at locations shown. Delete (4) paper towel/waste units - 2 at each room. Install hand dryers w/ top at 41.25" in Men's Room and w/ top at 38.25" in Women's Rm. See attached spec sheet with mounting information

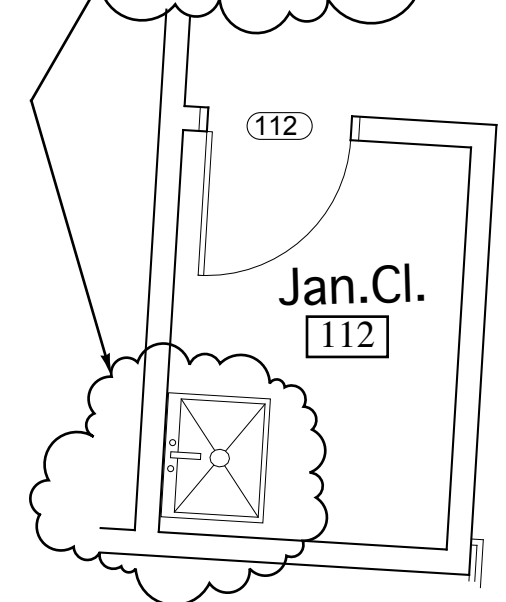
Solid surface counter top w/integral sink by Plumbing Contractor

**1** REVISED LAYOUT at MEN'S TOILET ROOM 214 / WOMEN'S RM 215  
SCALE: 1/4" = 1'-0"

**7** HAND DRYER LOCATIONS @ WOMEN'S RM. 109 & MEN'S RM. 110 PLANS  
SCALE: 1/4" = 1'-0"



Change the Mop Basin MP-1 to a Laundry Tub. Remove/modify the current rough-in to accommodate the new fixture. Fixture shall be Swanstone model SF-1F structural foam single basin laundry tub with steel Angular legs, molded-in drain and stopper. Faucet shall be Moen model 8277 two handle utility faucet, 4" centers, commercial duty, chrome. Provide chrome supplies with wheel handle stops and chrome or PVC P-trap with cleanout or slip nuts that allow trap to be removed for cleaning.



**3** MEN'S RM. 136 & WOMEN'S RM. 137 PLANS  
SCALE: 1/4" = 1'-0"

**4** JANITOR CLOSET 112  
SCALE: 1/4" = 1'-0"

Install owner supplied hand dryers at locations shown. Delete 2 paper towel - 1 at each room. Install hand dryers w/ top at 41.25" in Men's Room and w/ top at 38.25" in Women's Rm. See attached spec sheet with mounting information