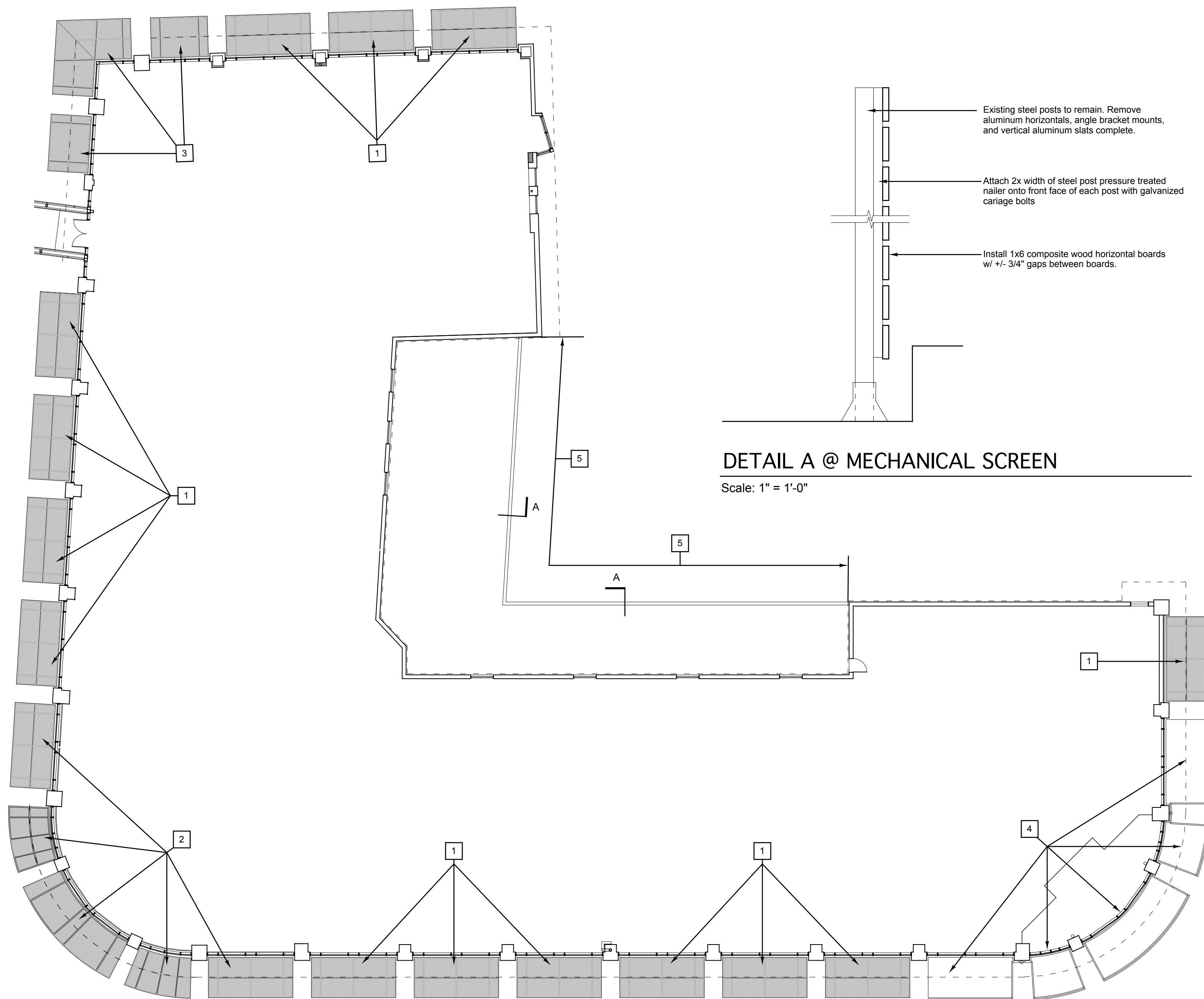


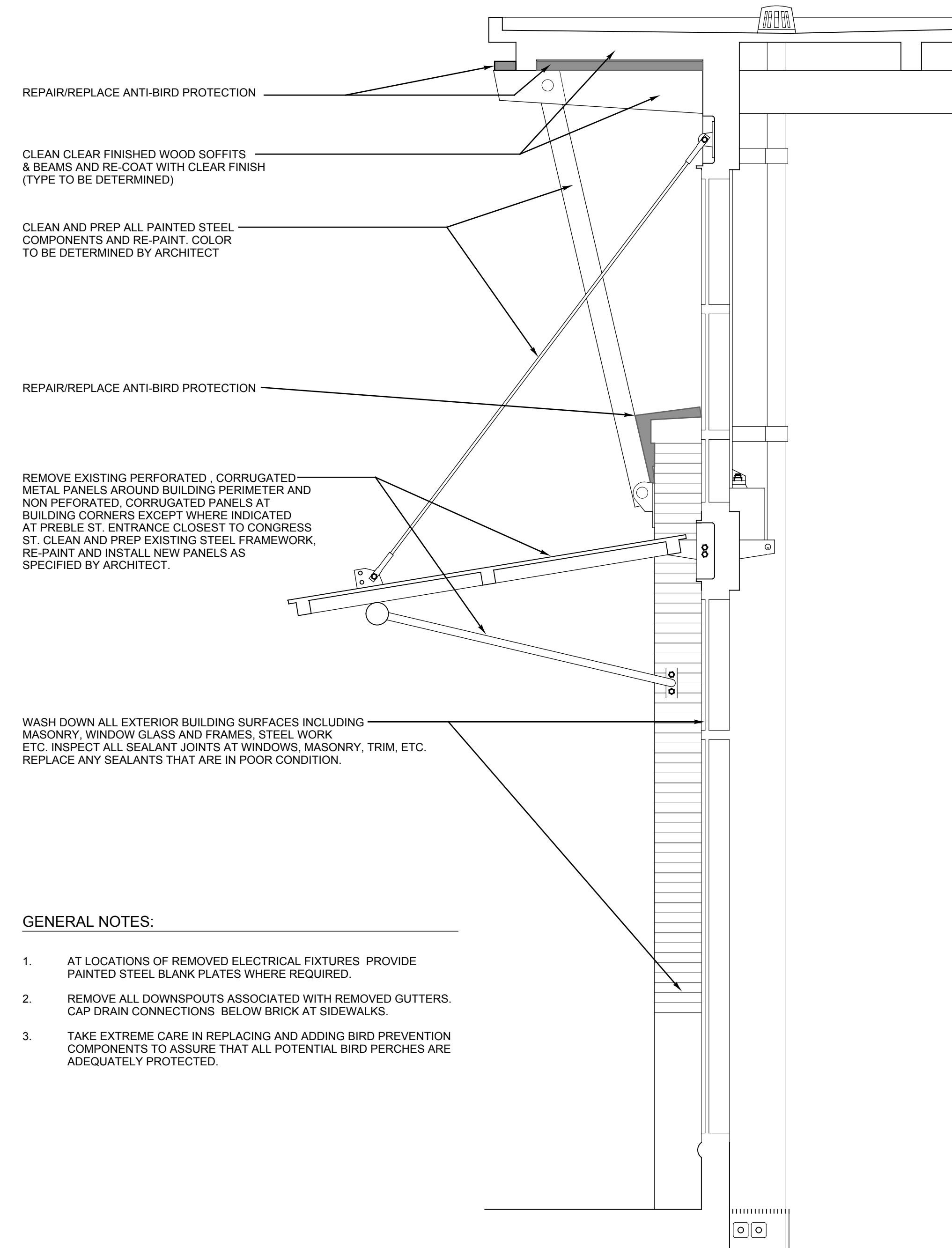
**KEY NOTES**

- 1 REMOVE EXISTING CORRUGATED METAL PANELS COMPLETE. CLEAN AND PREP STEEL FRAME COMPONENTS AND RE-PAINT. COLOR TO BE DETERMINED BY ARCHITECT. INSTALL NEW REPLACEMENT PANELS. PANELS TO BE "PULTRUDED I-BAR" FIBERGLASS GRATING #MS 1-6010 AS MANUFACTURED BY MCNICHOLS CO. PANELS HAVE 1" HIGH I-BARS WITH .9" SPACING BETWEEN. SMOOTH, NON-GRIT SURFACE. COLOR: GRAY. ATTACH W/ MANUFACTURER RECOMMENDED FASTENERS TO EXISTING STEEL TUBE FRAME WORK. RE-USE METAL CLOSURE TRIMS AROUND PANEL EDGES IF POSSIBLE. PANEL ORIENTATION SHALL BE SUCH THAT I BEAMS ARE PARALLEL TO BUILDING FACE. AVAILABLE LENGTHS ARE 8', 10', 12', 20' OR CUT TO SIZE. AVAILABLE WIDTHS ARE 3', 4', 5'.
- 2 REMOVE EXISTING CORRUGATED METAL PANELS COMPLETE. CLEAN AND PREP STEEL FRAME COMPONENTS AND RE-PAINT. COLOR TO BE DETERMINED BY ARCHITECT. INSTALL NEW REPLACEMENT PANELS. TYPE AS DESCRIBED IN NOTE 1 ABOVE. ALSO REMOVE ALL GUTTERS AND ASSOCIATED DOWNSPOUTS.
- 3 REMOVE EXISTING CORRUGATED METAL PANELS COMPLETE. CLEAN AND PREP STEEL FRAME COMPONENTS AND RE-PAINT. COLOR TO BE DETERMINED BY ARCHITECT. INSTALL NEW REPLACEMENT PANELS. TYPE AS DESCRIBED IN NOTE 1. ALSO REMOVE ALL GUTTERS AND ASSOCIATED DOWNSPOUTS, ELECTRIC HEAT TAPE AND ICE GUARDS.
- 4 EXISTING SOLID CORRUGATED METAL PANELS AND ASSOCIATED GUTTERS AND DOWNSPOUTS TO REMAIN PLEASE PROVIDE AN ALTERNATE PRICE TO REMOVE ALL PANELS, GUTTERS, AND ICE GUARDS AND REPLACE WITH NEW PANELS. TYPE AS DESCRIBED IN NOTE 1.
- 5 REMOVE EXISTING METAL MECHANICAL SCREENING COMPLETE INCLUDING HORIZONTAL SUPPORT MEMBERS. INSTALL NEW SCREEN SYSTEM ON EXISTING VERTICAL POSTS AS DESCRIBED IN DETAIL A BELOW.



**KEY PLAN FOR REPAIRS AND MODIFICATIONS TO EXISTING CANOPIES & MECHANICAL SCREEN**

Scale: 1/16" = 1'-0"



**GENERAL NOTES:**

1. AT LOCATIONS OF REMOVED ELECTRICAL FIXTURES PROVIDE PAINTED STEEL BLANK PLATES WHERE REQUIRED.
2. REMOVE ALL DOWNSPOUTS ASSOCIATED WITH REMOVED GUTTERS. CAP DRAIN CONNECTIONS BELOW BRICK AT SIDEWALKS.
3. TAKE EXTREME CARE IN REPLACING AND ADDING BIRD PREVENTION COMPONENTS TO ASSURE THAT ALL POTENTIAL BIRD PERCHES ARE ADEQUATELY PROTECTED.

**TYPICAL WALL SECTION SHOWING EXTENT OF EXTERIOR RESTORATION**

Scale: 1/4" = 1'-0"

**POWERPAY  
OFFICE FIT UP**

**Winton Scott  
Architects**  
5 Milk Street  
Portland, ME 04101

**Wright Ryan  
Construction, Inc.**  
10 Danforth Street  
Portland, ME 04101

**Becker Structural  
Engineers, Inc.**  
75 York Street  
Portland, Maine 04101

**Mechanical  
Systems  
Engineers**  
10 Royal River Center  
Yarmouth, Maine 04096

**Bartlett Design**  
942 Washington Ave.  
Bath, Maine 04530

**Fore Solutions**  
386 Fore Street  
Portland, Maine 04101

**ASK  
32**