

Install seven new S2 light fixtures described in the 8/7/09 written clarification from Bartlett Design. Locate in line with original fixture locations except shifted toward the exterior as necessary to clear conduit.

New gyp soffit board overlay on mtl. furring channels ceiling.

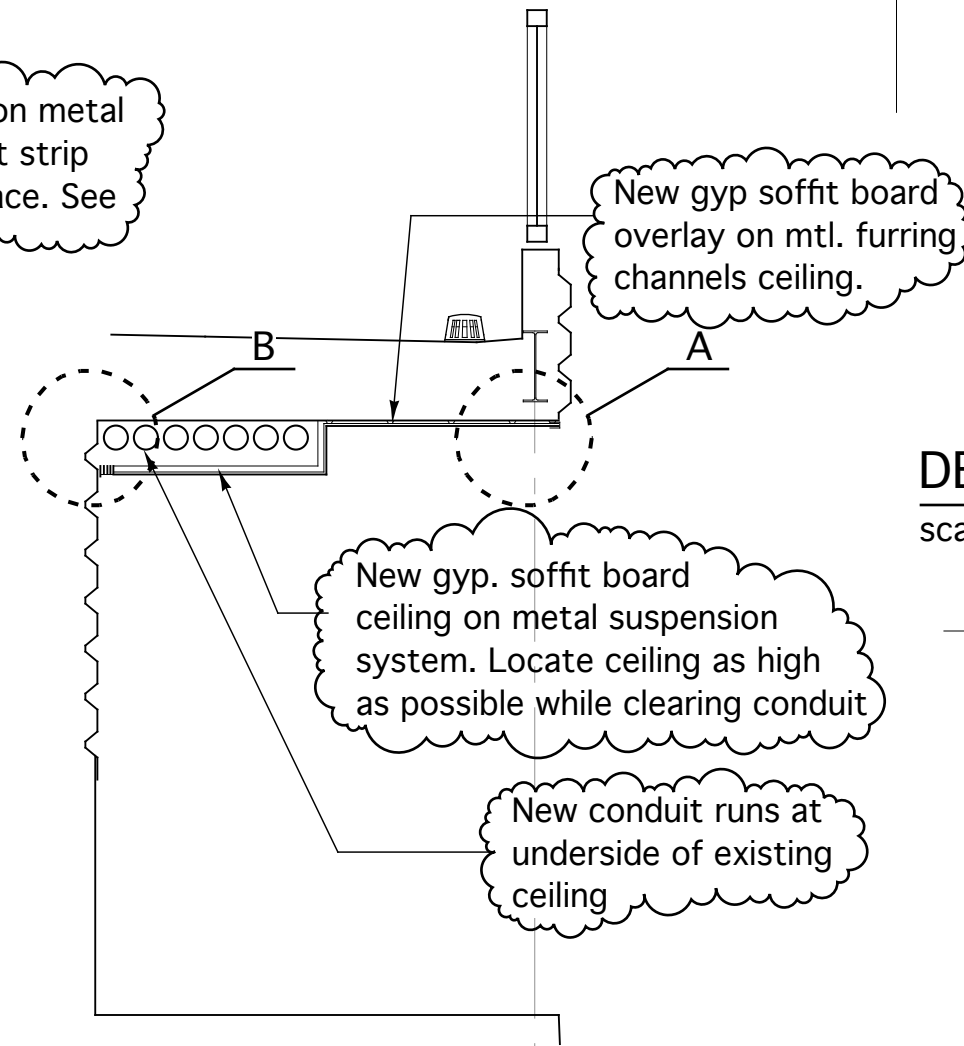
New painted gyp. soffit board ceiling on metal suspension system w/ perimeter soffit strip vents. Existing ceiling to remain in place. See details

Extend sprinkler feeds and install new heads in new ceiling as required to meet NFPA 13.

New conduit runs at underside of existing ceiling

CEILING PLAN

scale: 3/32" = 1'-0"



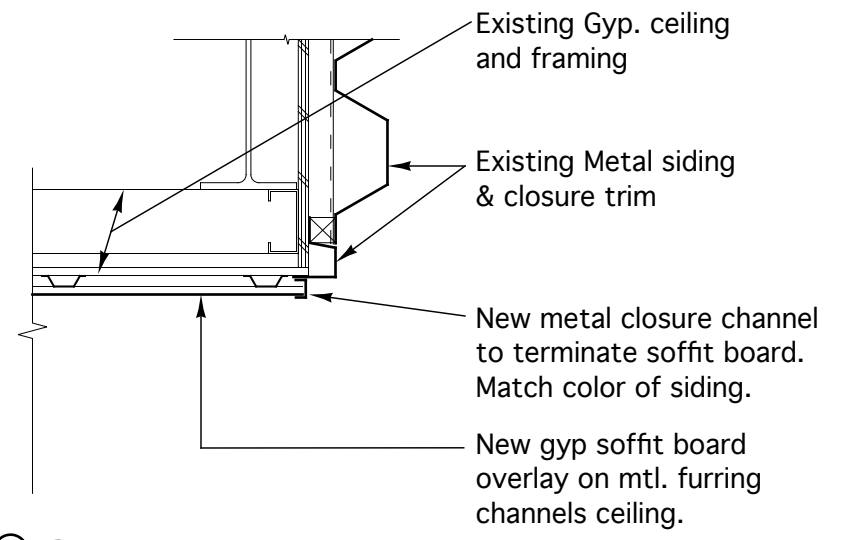
New gyp soffit board overlay on mtl. furring channels ceiling.

New gyp. soffit board ceiling on metal suspension system. Locate ceiling as high as possible while clearing conduit

New conduit runs at underside of existing ceiling

SECTION

scale: 1/4" = 1'-0"



Existing Gyp. ceiling and framing

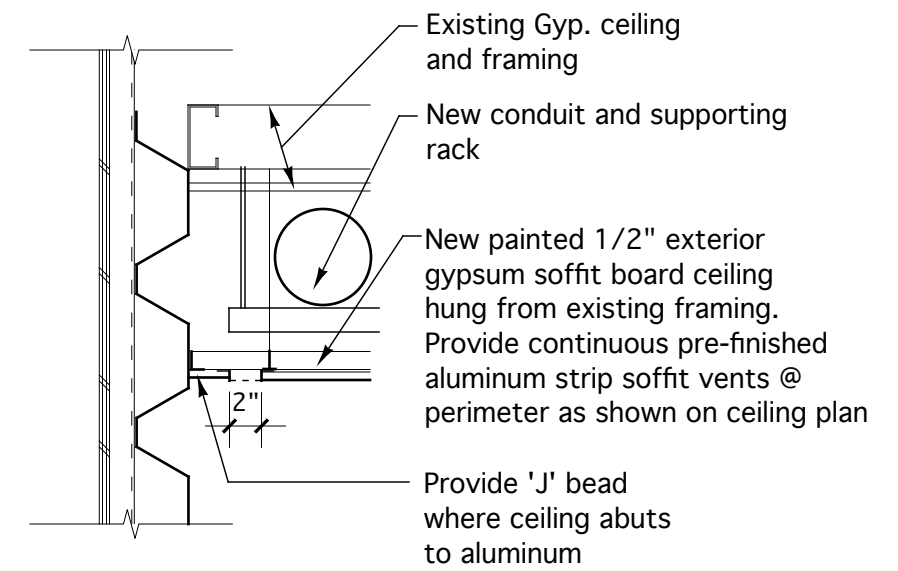
Existing Metal siding & closure trim

New metal closure channel to terminate soffit board. Match color of siding.

New gyp soffit board overlay on mtl. furring channels ceiling.

DETAIL A

scale: 1" = 1'-0"



Existing Gyp. ceiling and framing

New conduit and supporting rack

New painted 1/2" exterior gypsum soffit board ceiling hung from existing framing. Provide continuous pre-finished aluminum strip soffit vents @ perimeter as shown on ceiling plan

Provide 'J' bead where ceiling abuts to aluminum

DETAIL B

scale: 1" = 1'-0"

REVISED OCTOBER 30, 2009