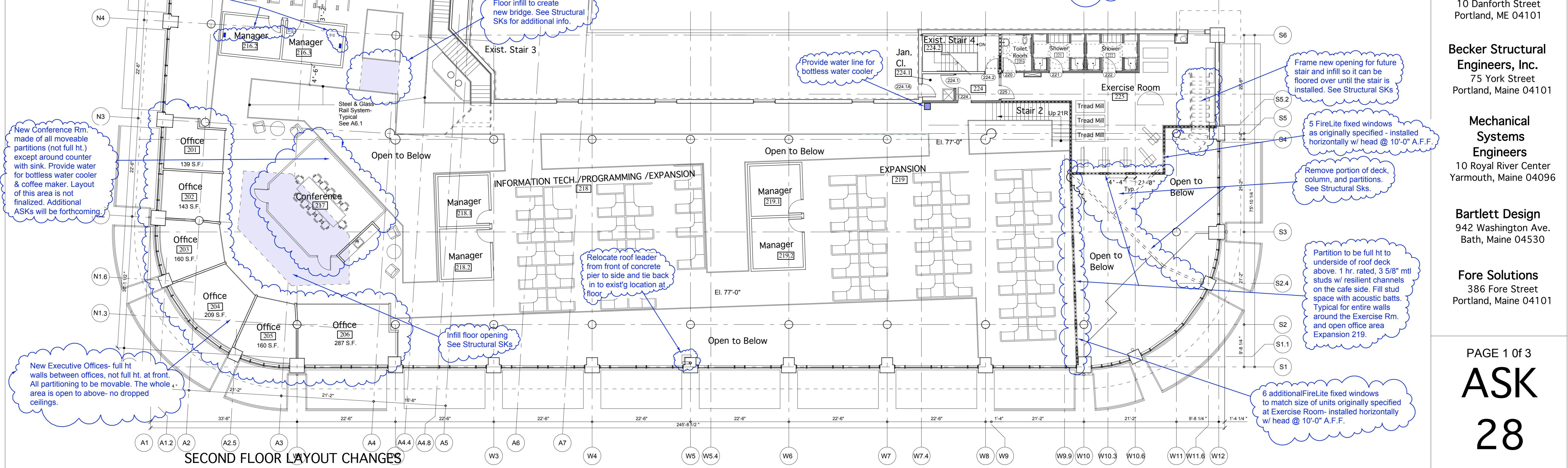


FIRST FLOOR LAYOUT CHANGES



SECOND FLOOR LAYOUT CHANGES

**POWERPAY
OFFICE FIT UP**

**Winton Scott
Architects**
5 Milk Street
Portland, ME 04101

**Wright Ryan
Construction, Inc.**
10 Danforth Street
Portland, ME 04101

**Becker Structural
Engineers, Inc.**
75 York Street
Portland, Maine 04101

**Mechanical
Systems
Engineers**
10 Royal River Center
Yarmouth, Maine 04096

Bartlett Design
942 Washington Ave.
Bath, Maine 04530

Fore Solutions
386 Fore Street
Portland, Maine 04101

POWERPAY OFFICE FIT UP

Winton Scott Architects
5 Milk Street
Portland, ME 04101

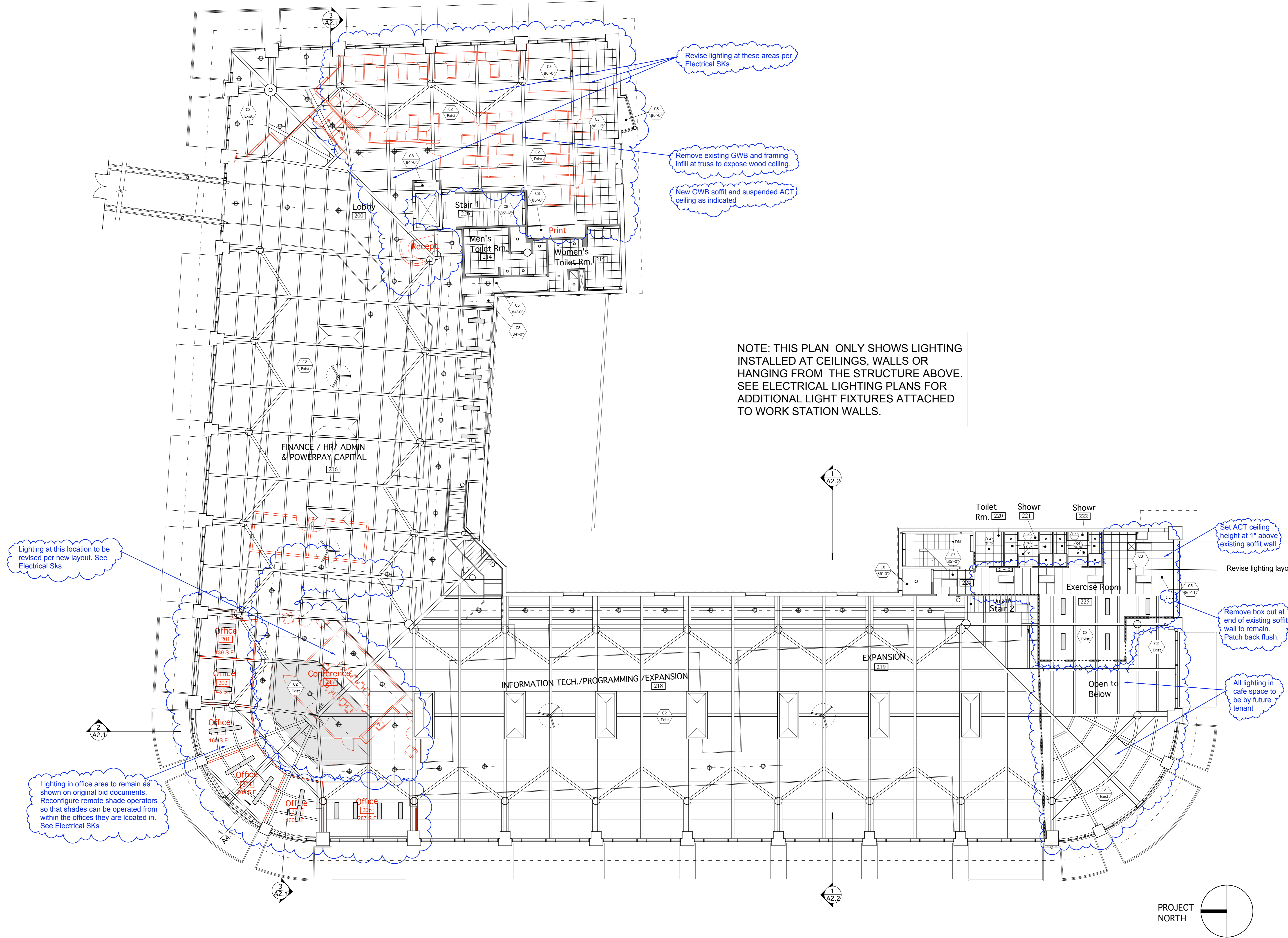
Wright Ryan Construction, Inc.
10 Danforth Street
Portland, ME 04101

Becker Structural Engineers, Inc.
75 York Street
Portland, Maine 04101

Mechanical Systems Engineers
10 Royal River Center
Yarmouth, Maine 04096

Bartlett Design
942 Washington Ave.
Bath, Maine 04530

Fore Solutions
386 Fore Street
Portland, Maine 04101



Revise lighting at these areas per Electrical SKs

Remove existing GWB and framing infill at truss to expose wood ceiling.

New GWB soffit and suspended ACT ceiling as indicated

NOTE: THIS PLAN ONLY SHOWS LIGHTING INSTALLED AT CEILINGS, WALLS OR HANGING FROM THE STRUCTURE ABOVE. SEE ELECTRICAL LIGHTING PLANS FOR ADDITIONAL LIGHT FIXTURES ATTACHED TO WORK STATION WALLS.

Lighting at this location to be revised per new layout. See Electrical SKs

Lighting in office area to remain as shown on original bid documents. Reconfigure remote shade operators so that shades can be operated from within the offices they are located in. See Electrical SKs

Set ACT ceiling height at 1" above existing soffit wall

Revise lighting layout

Remove box out at end of existing soffit wall to remain. Patch back flush.

All lighting in cafe space to be by future tenant

PROJECT NORTH

