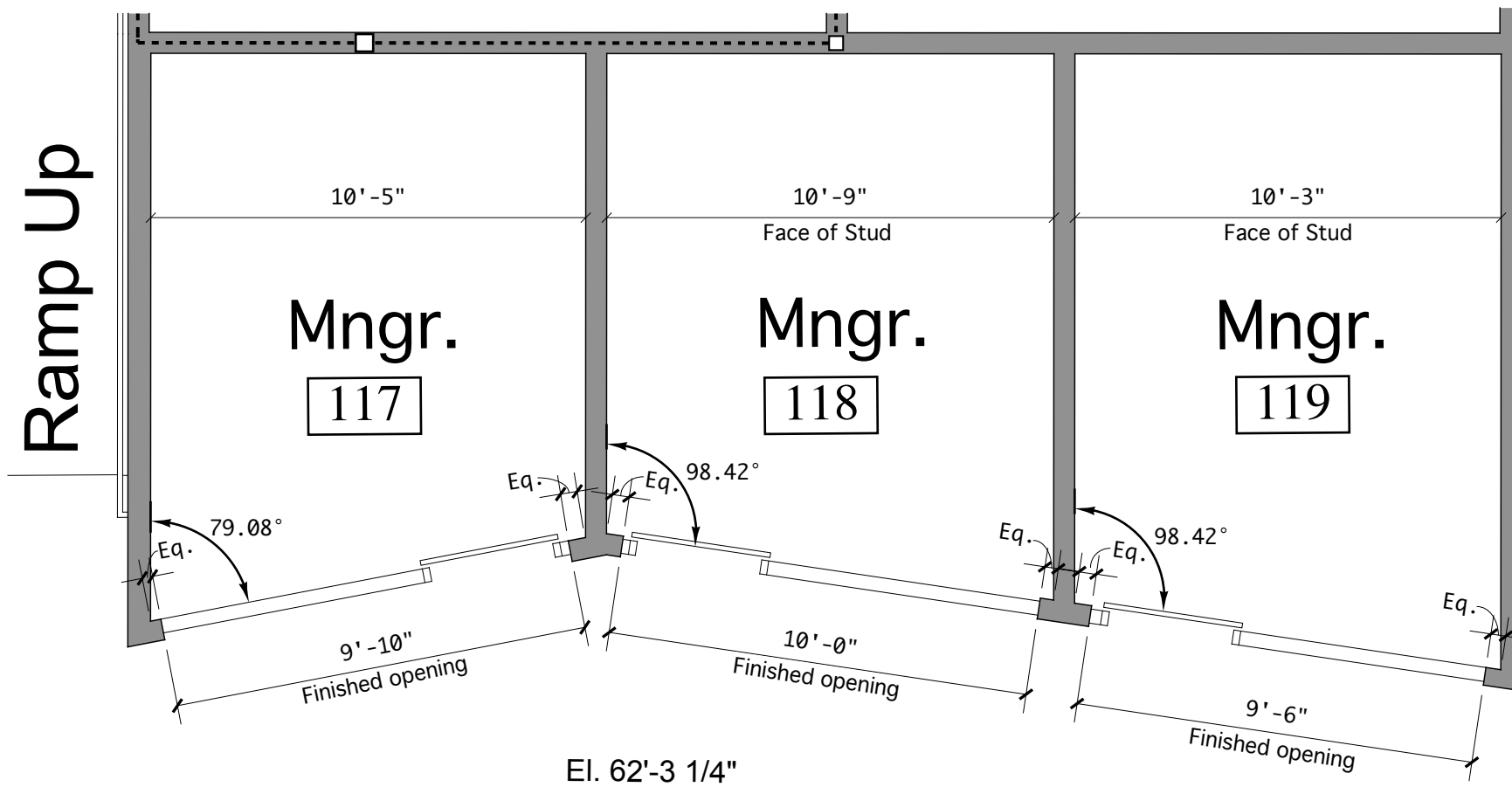
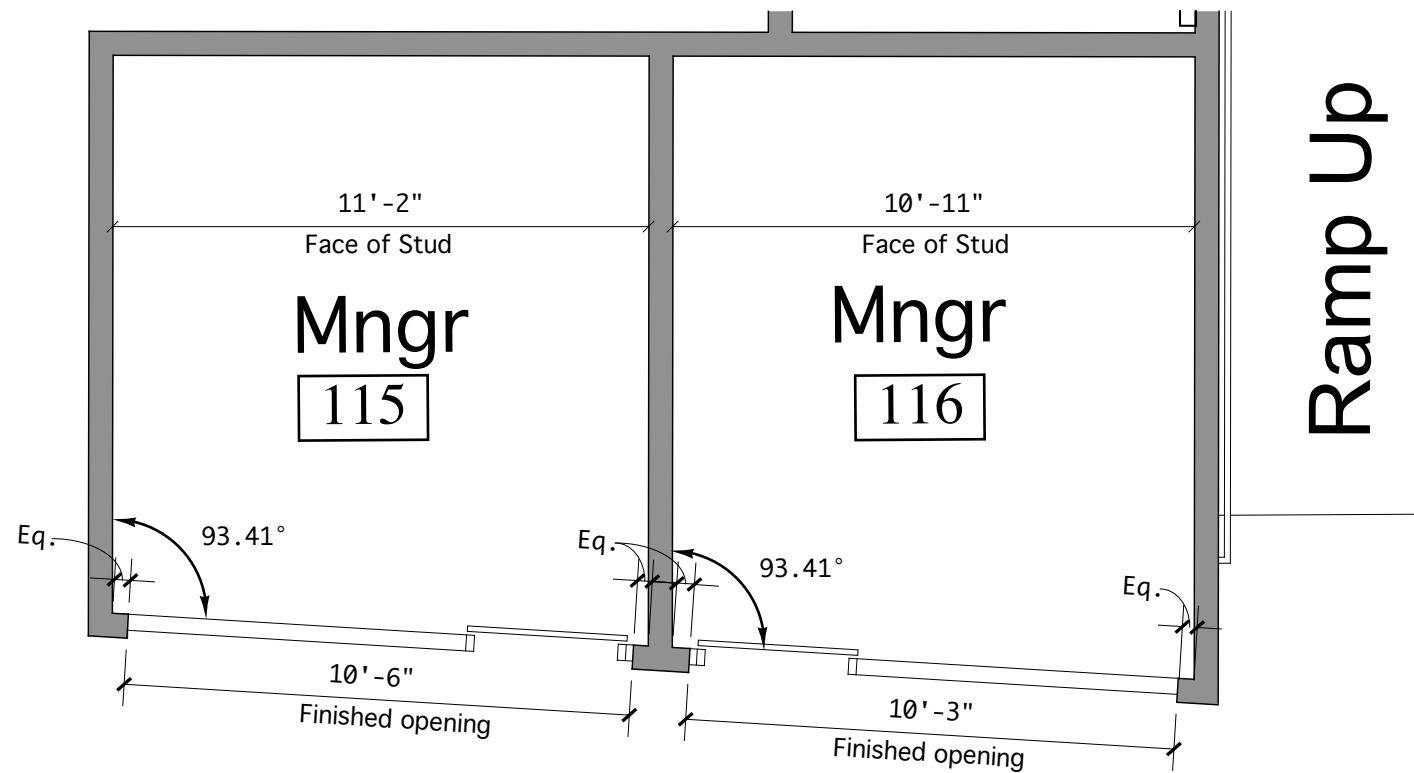


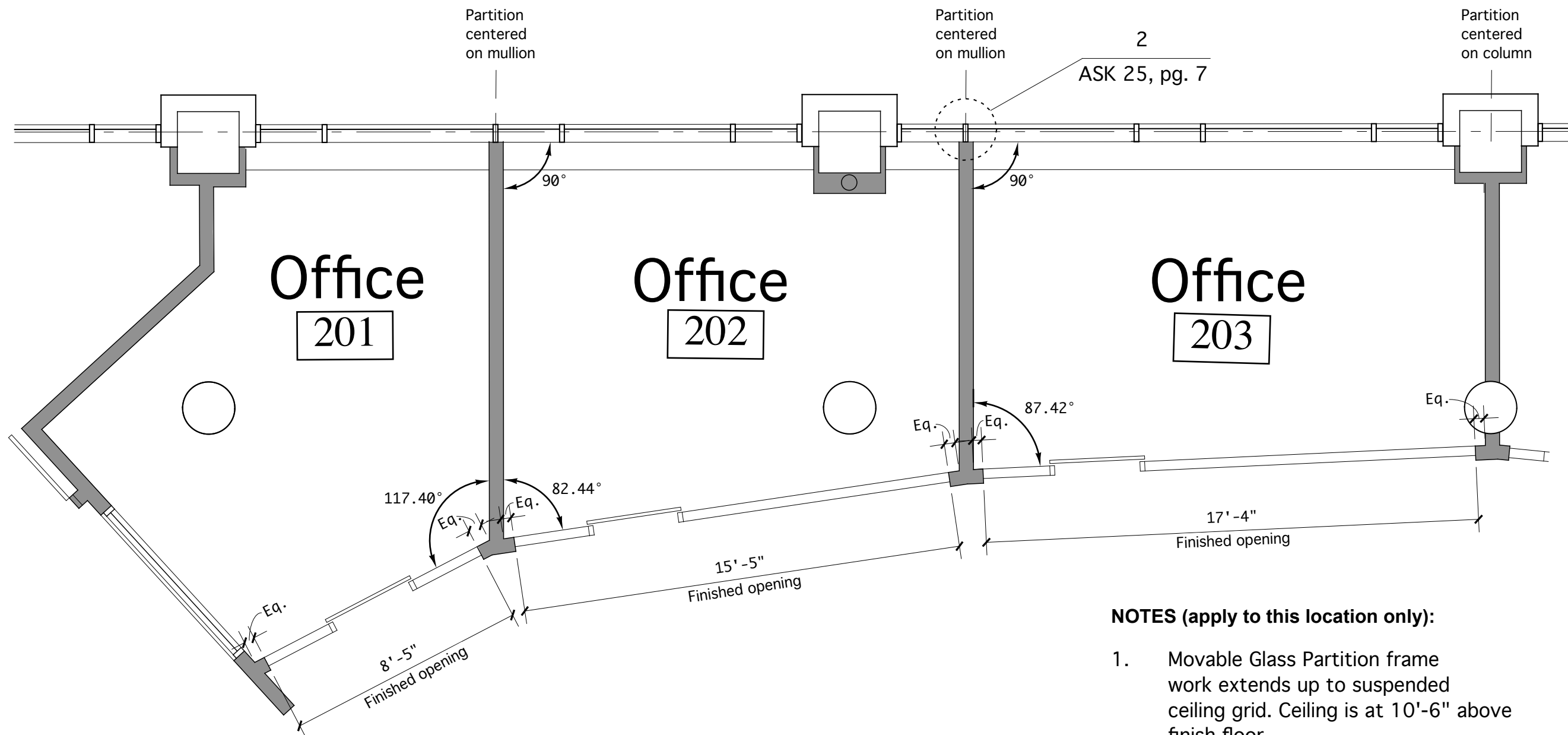
**NOTES (apply to this location only):**

1. Movable Glass Partition frame work extends up to suspended ceiling grid. Ceiling is at 10' above finish floor.
2. Glass panels to extend up to +/- 8'-0". Remaining framing bays to be left open without glass.
3. Glass partition contractor to confirm all field dimensions prior to fabrication.



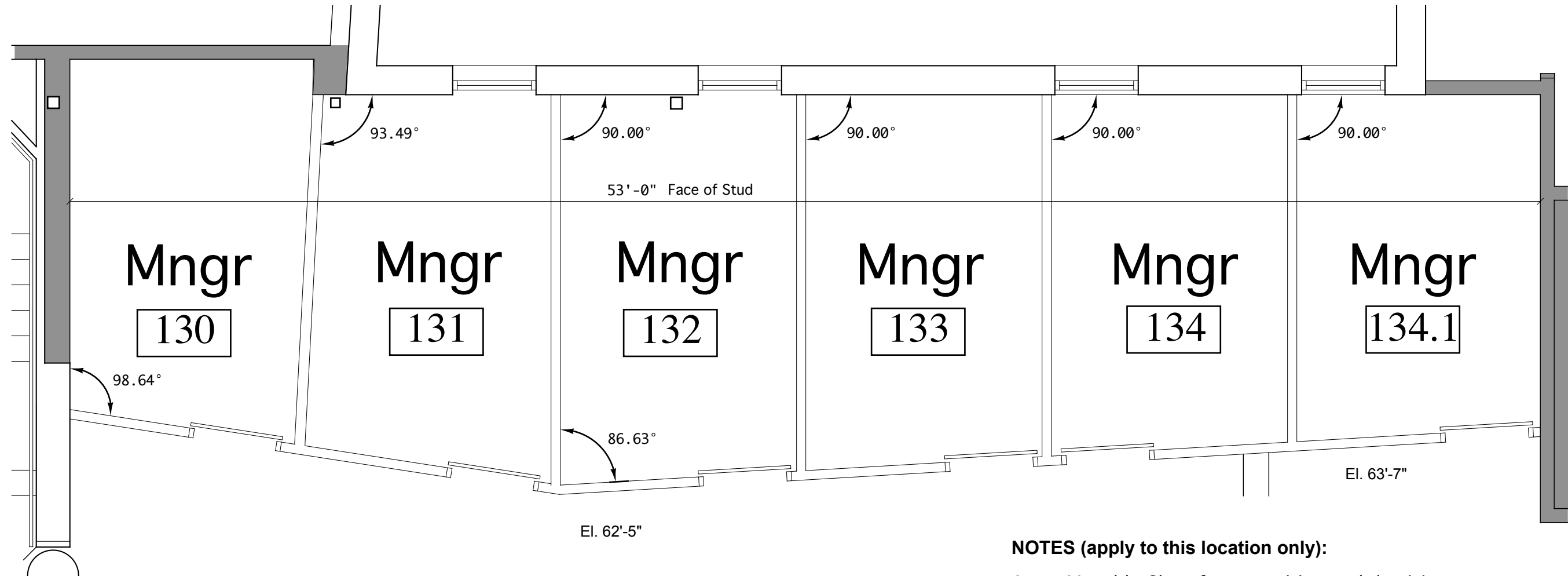
**NOTES (apply to this location only):**

1. Movable Glass Partition frame work extends up to suspended ceiling grid. Ceiling is at 9' above finish floor at rooms 115, 116 and 9'-8 3/4" above finish floor at rooms 117, 118, 119.
2. Glass panels to extend up to +/- 7'-0" at 9'-0" ceiling and up to +/- 7'-8 3/4" at 9'-8 3/4" ceiling. Remaining framing bays to be left open without glass.
3. Glass partition contractor to confirm all field dimensions prior to fabrication.



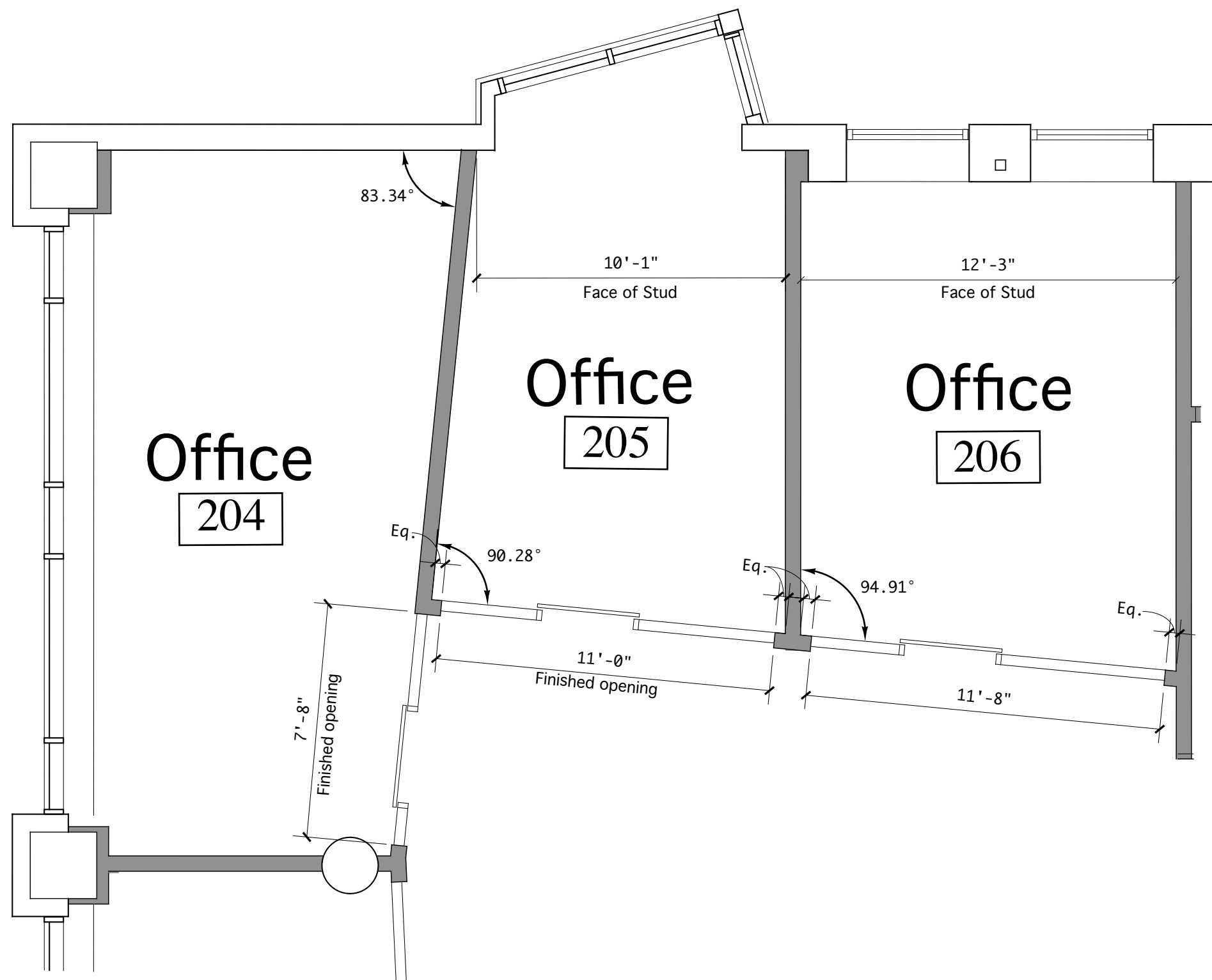
**NOTES (apply to this location only):**

1. Movable Glass Partition frame work extends up to suspended ceiling grid. Ceiling is at 10'-6" above finish floor.
2. Glass panels to extend up to ceiling for complete room enclosure.
3. Glass partition contractor to confirm all field dimensions prior to fabrication.



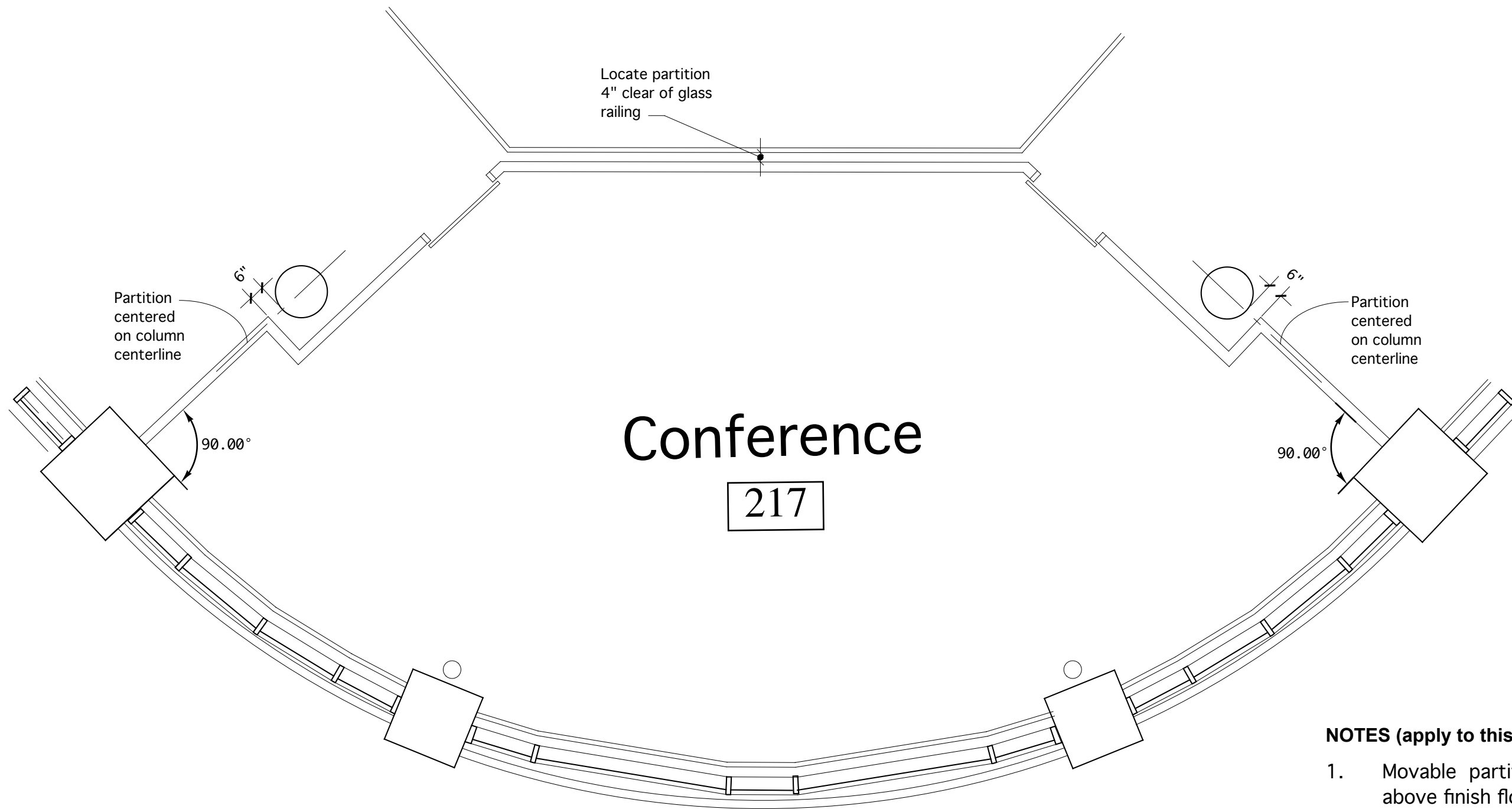
**NOTES (apply to this location only):**

1. Movable Glass front partition and demising partition frame work extends up to suspended ceiling grid. Ceiling is at 9'-7" above finish floor at rooms 130, 131, 132, 133, 134. Ceiling is at 8'-5" above finish floor at room 134.1.4
2. Glass panels at front partition to extend up to +/- 7'-7" at 9'-7" ceiling and up to +/- 6'-5" at 8'-5" ceiling. Remaining framing bays to be left open without glass. Demising partitions have panels all the way up to ceiling for complete room enclosure.
3. Glass partition contractor to confirm all field dimensions prior to fabrication.



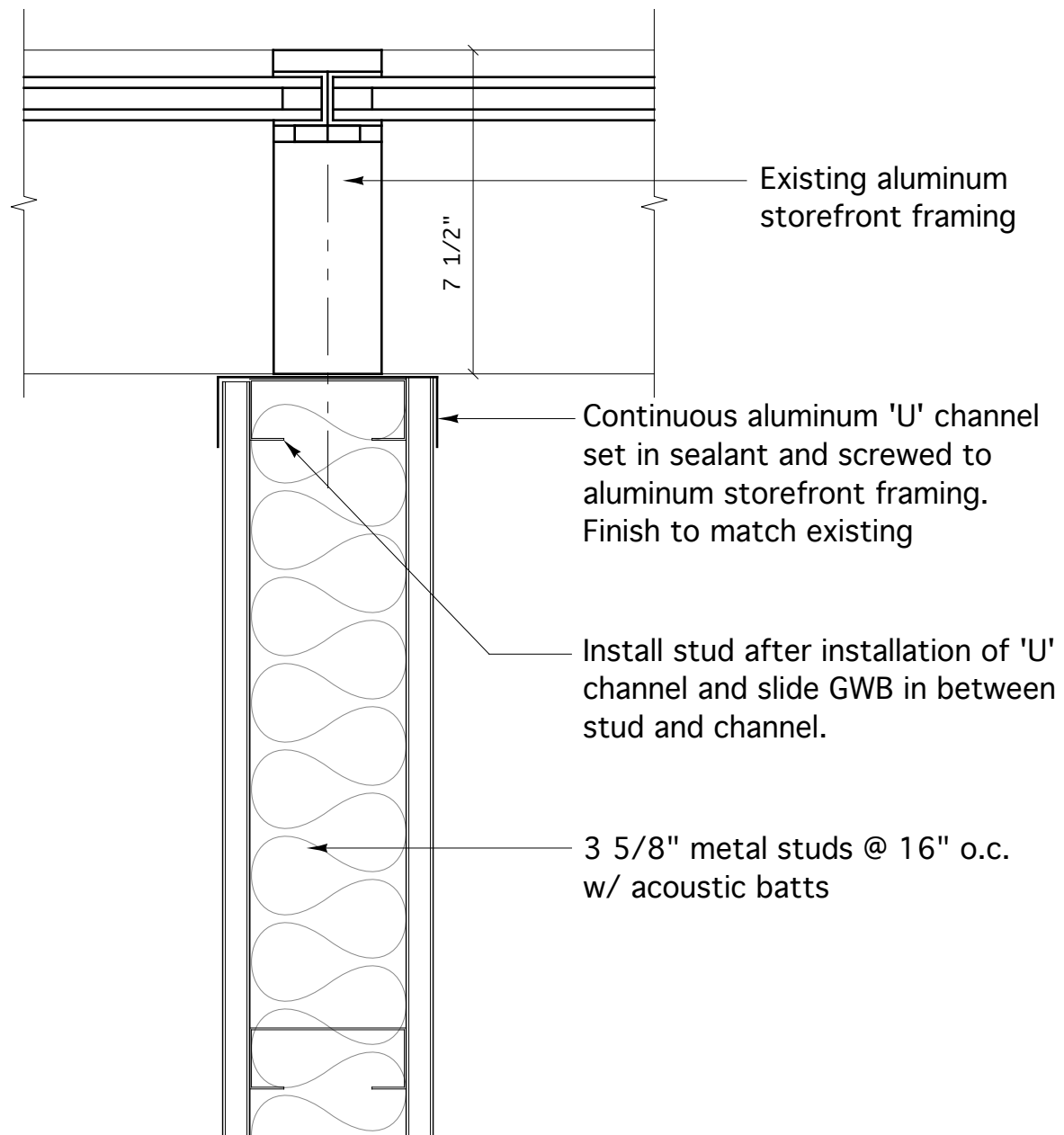
**NOTES (apply to this location only):**

1. Movable Glass Partition frame work extends up to suspended ceiling grid. Ceiling is at 10'-6" above finish floor.
2. Glass panels to extend up to ceiling for complete room enclosure.
3. Glass partition contractor to confirm all field dimensions prior to fabrication.

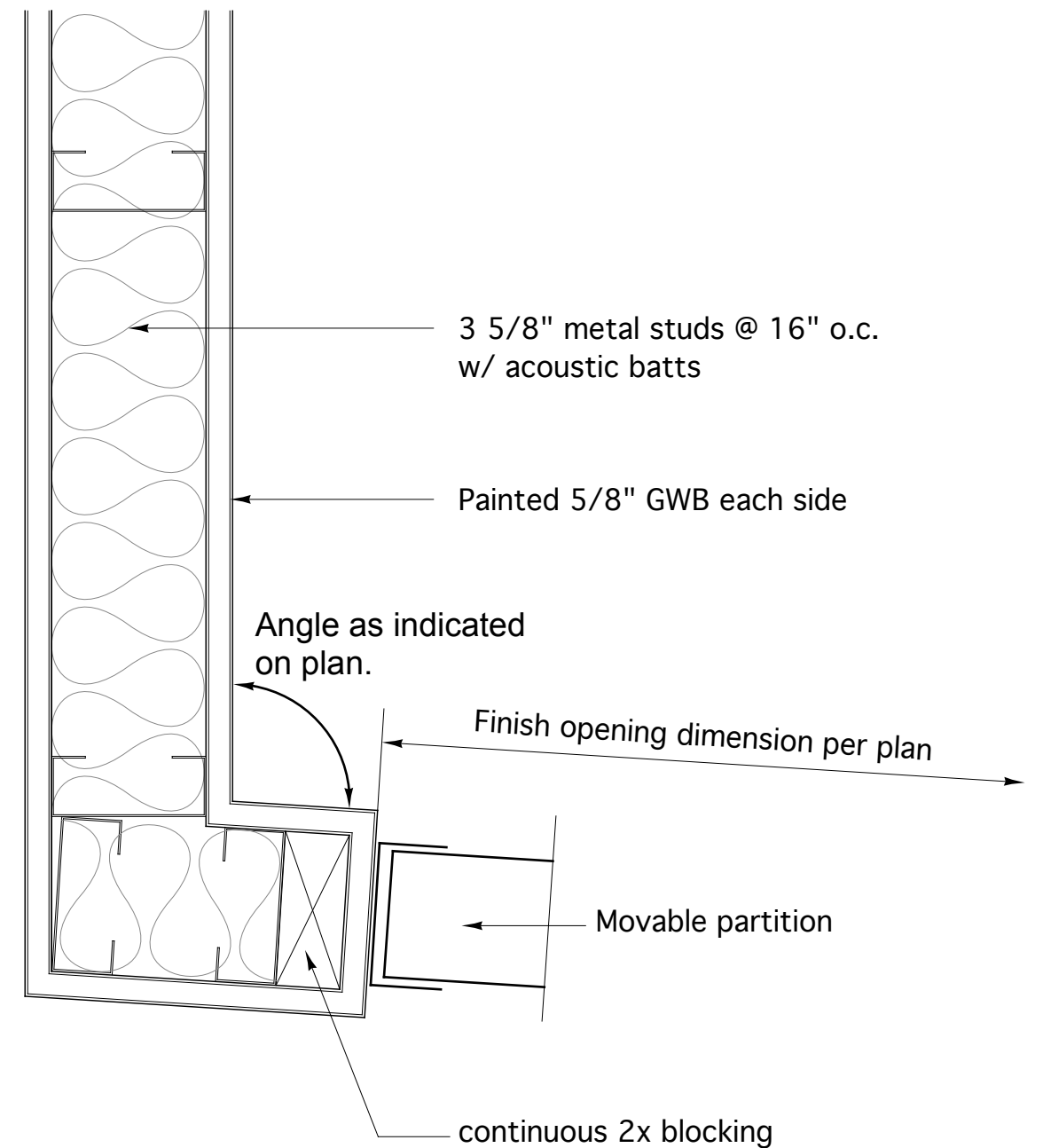


**NOTES (apply to this location only):**

1. Movable partitions extend up to 9'-0" above finish floor.
2. Glass partition contractor to confirm all field dimensions prior to fabrication.



**2** GWB PARTITION TERMINATION AT STOREFRONT MULLION  
3" = 1'-0"



**1** TYPICAL DRYWALL RETURN AT MOVABLE GLASS WALLS  
3" = 1'-0"