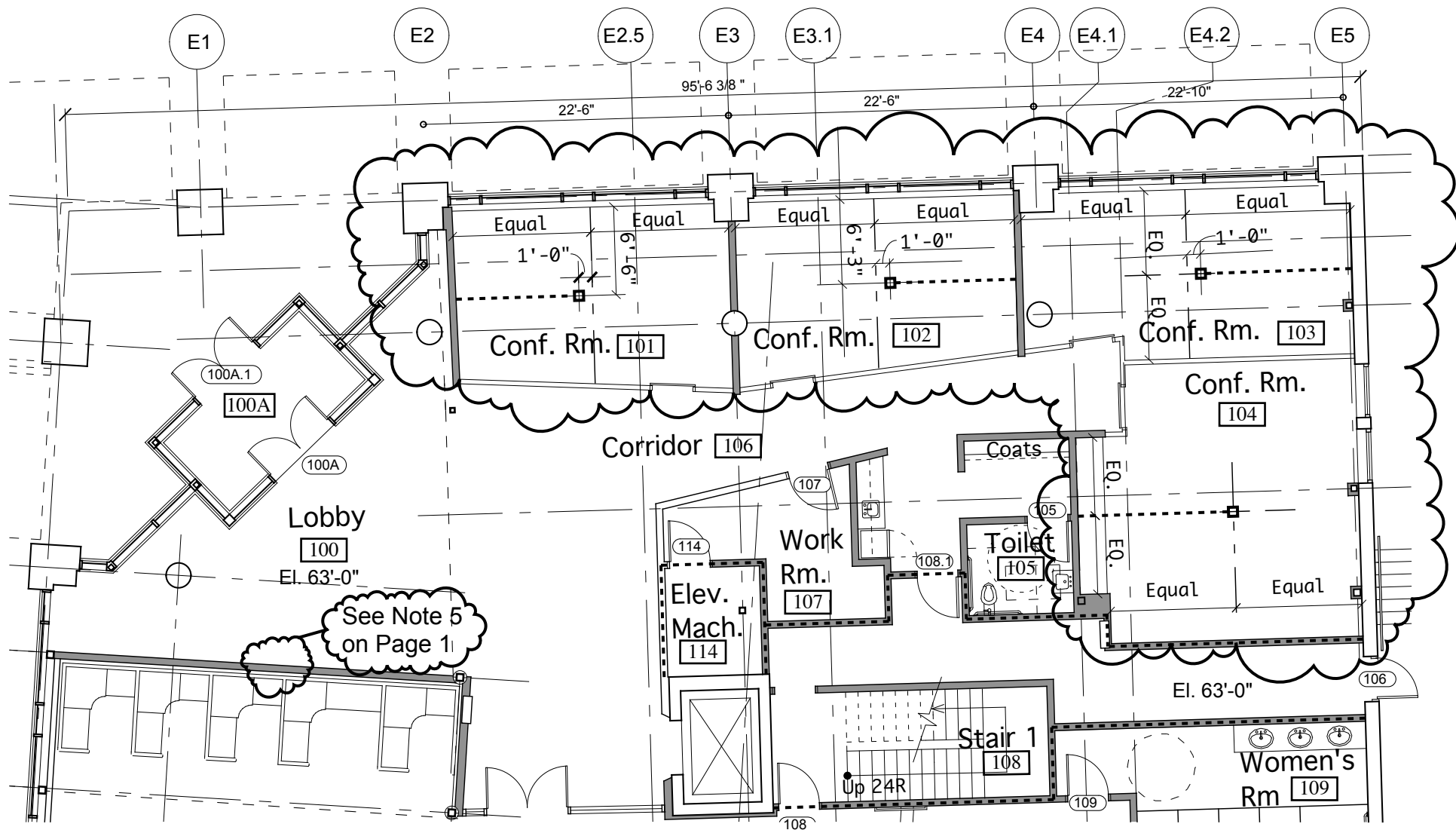


GENERAL NOTES:

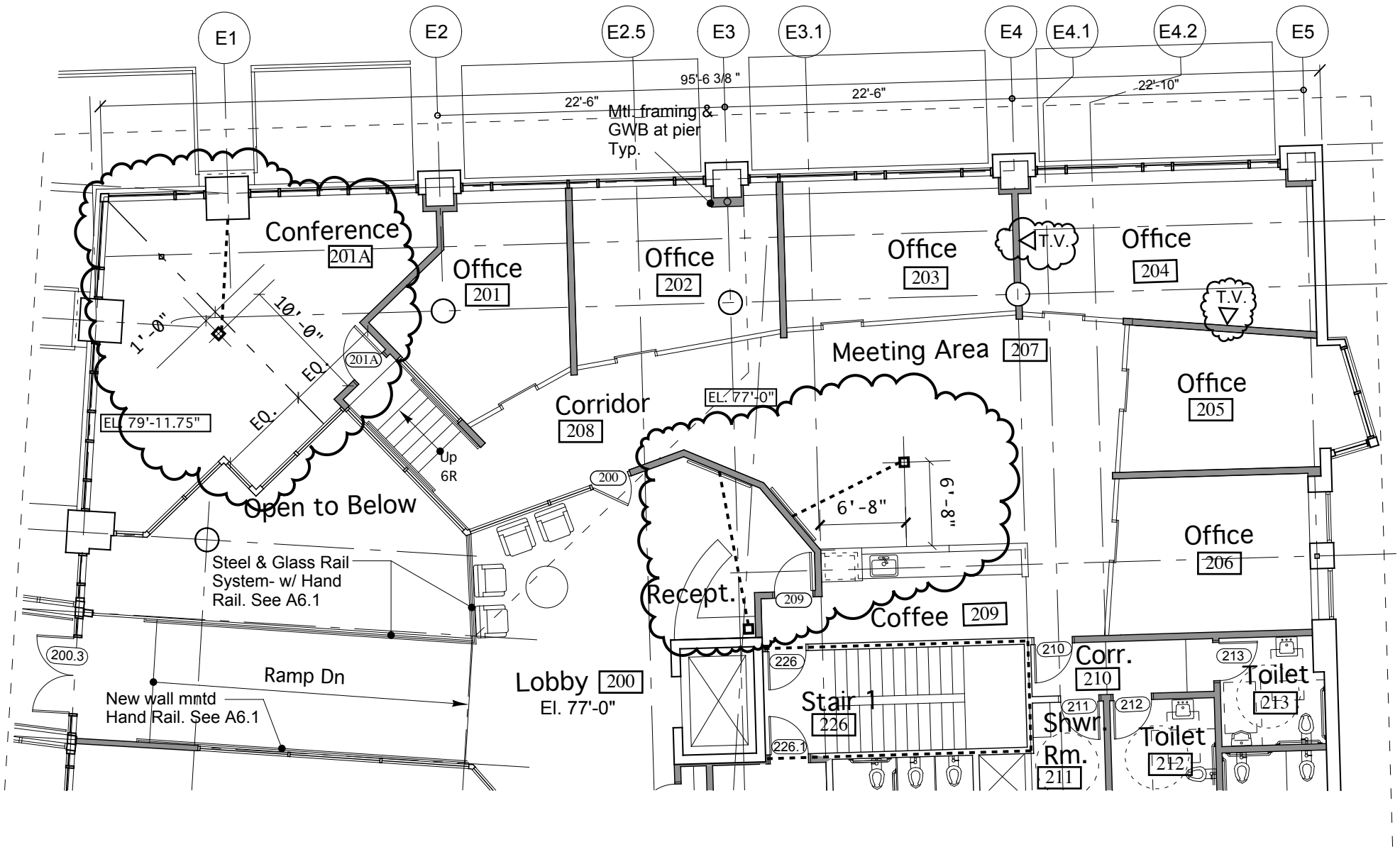
1. Conference Rooms 101,103, 104, 207, and 217 are scheduled to have telecom recessed wall stations, underslab conduit, and recessed floor outlets to support operation of digital displays as described in item #1.18 of Electrical Addendum #1 issued as part of General Addendum #2 dated April 16,2009. ASK 18, pages 2, 3, 4 provide specific locations for floor boxes and underslab conduit.
2. Add all components as described in note1 above for Conference Room 102 and new conference room 201A added by ASK 13. ASK 18, pages 2, 3, 4 provide specific locations for floor boxes and undersalb conduit.
3. Lobby 200 is scheduled to have telecom recessed wall stations as described in item #1.44 of Electrical Addendum #1 issued as part of General Addendum #2 dated April 16, 2009. Add underslab conduit, recessed floor outlet, and cabling to provide complete system similar to that described in note 1 above. ASK 18, pages 2, 3, 4 provide specific locations for floor boxes and underslab conduit.
4. Add two cable T.V. outlets at office 201 as shown on ASK 18 page 2.
5. At the west wall of Lobby 100, a power outlet and data outlet are shown on E1.1. A cable T.V. outlet was added per item #1.13 of Electrical Addendum #1 issue with General Addendum #2 dated April 16, 2009. Revise this installation to provide upper and lower telecom wall stations and cabling similar to installation for Bar 126 described in item #1.21 of Electrical Addendum #1.
6. At location adjacent to Lobby 143 as shown on ASK 18, page 4, provide upper and lower telecom stations and cabling similar to installation for Bar 126. Lower station to be 18" A.F.F. at wall. Upper station to be mounted above ceiling at Lobby 143.



See Note 5 on Page 1

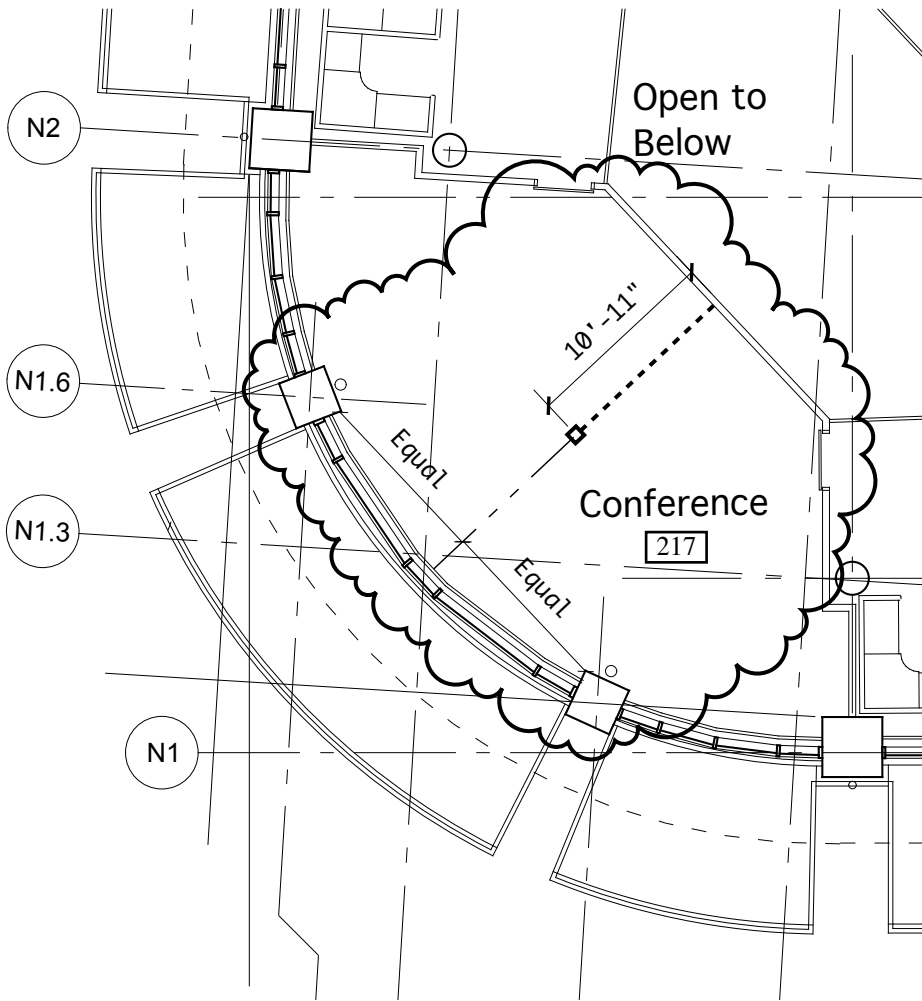
RECESSED FLOOR BOX AND CONDUIT LOCATIONS - FIRST FLOOR

Scale: 3/32"=1'-0"



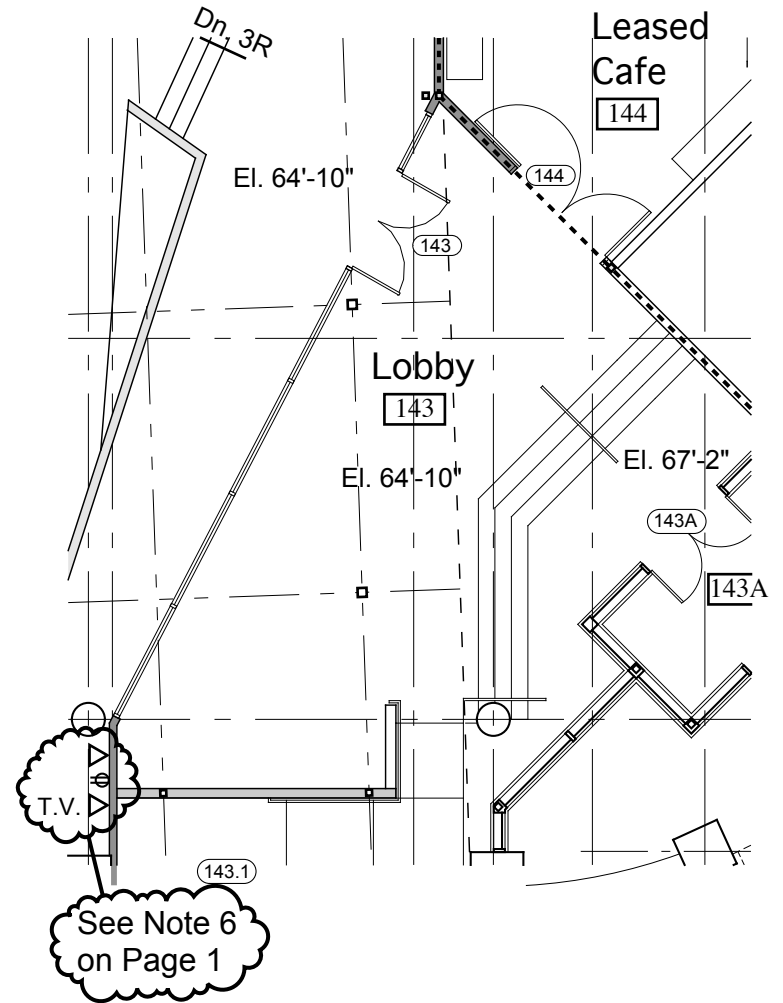
RECESSED FLOOR BOX AND CONDUIT LOCATIONS; AND NEW CABLE TV OUTLET LOCATIONS - SECOND FLOOR

Scale: 3/32"=1'-0"



RECESSED FLOOR BOX AND CONDUIT LOCATIONS - SECOND FLR

Scale: 3/32"=1'-0"



T.V. / DATA / POWER ADJACENT TO LOBBY 143

Scale: 3/32"=1'-0"