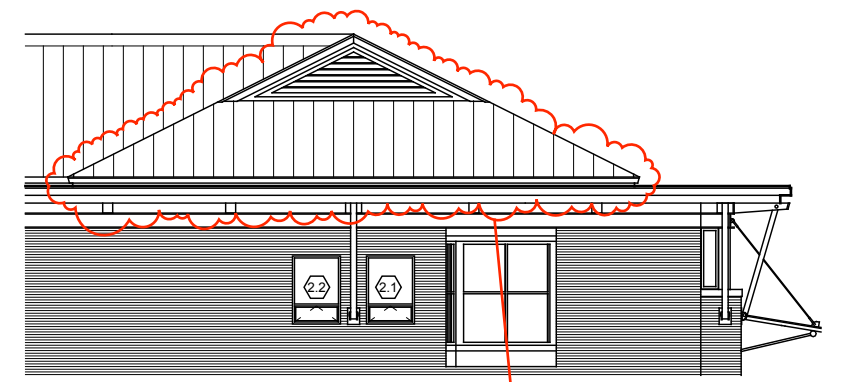


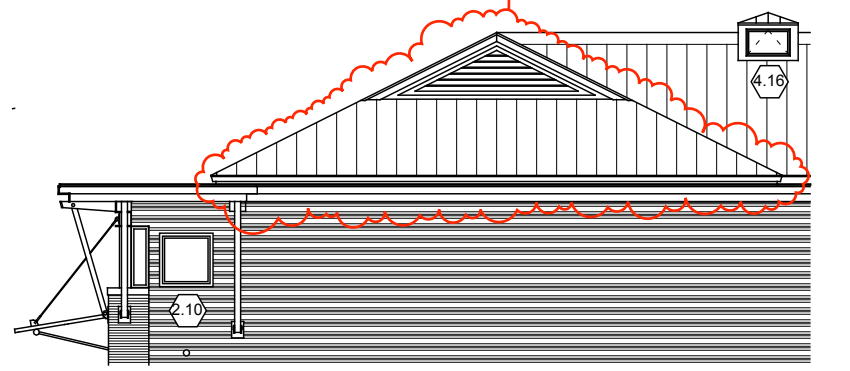


At existing first floor exterior walls that are clouded, remove existing batt insulation and fill entire stud space with dense pack cellulose insulation in existing 6" metal stud walls



GABLE END at SERVICE DRIVE

At existing gable end roofs constructed of light gauge metal framing remove existing batt insulation and provide 5 1/2" of closed cell high density spray foam insulation. Prior to installing insulation attach galvanized sheet metal panel to back side of abandoned triangular louvers. Apply foam insulation over installed panels



GABLE END at SERVICE DRIVE