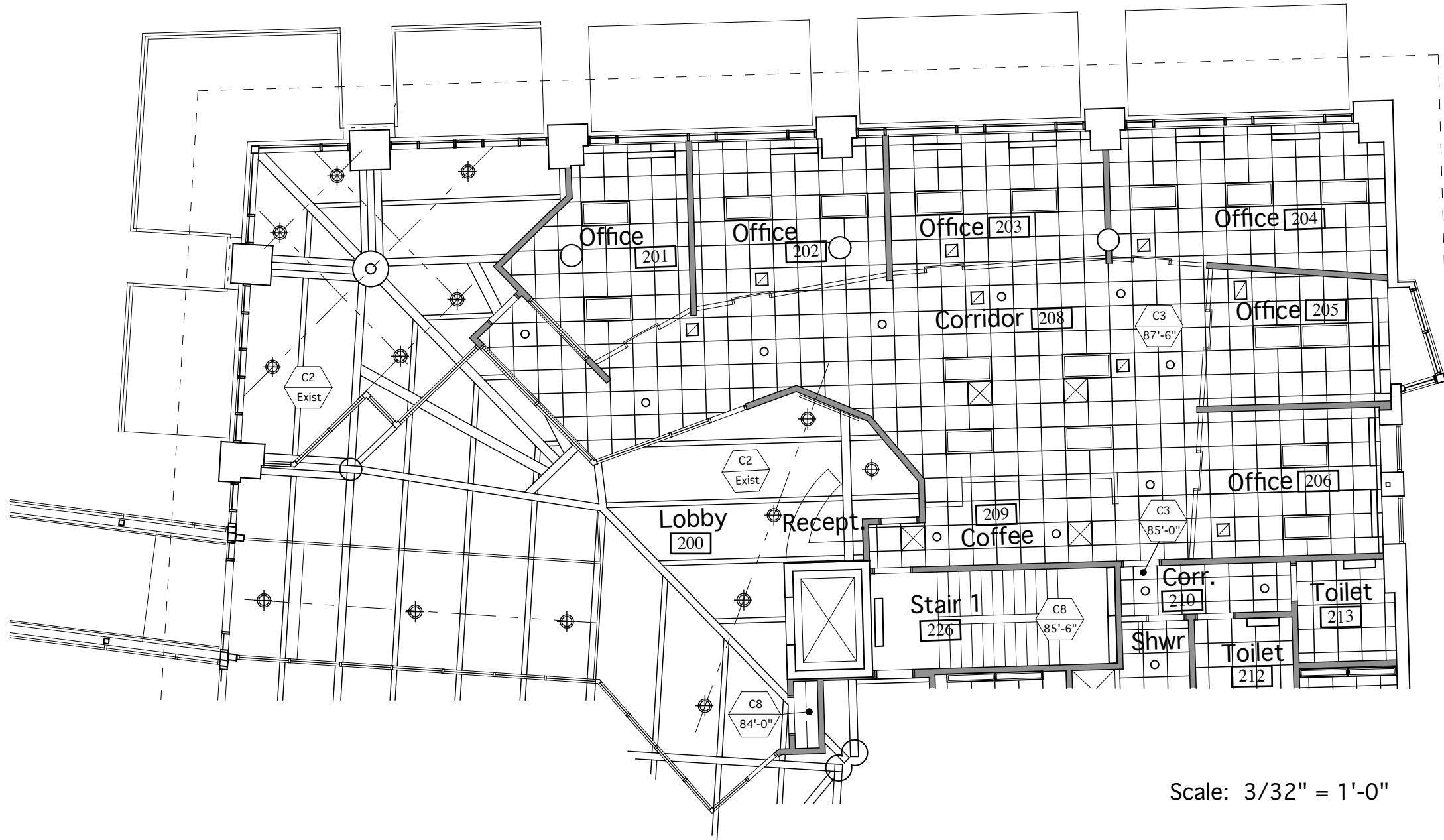


REVISIONS TO CONTRACT DOCUMENTS:

1. Revise layout at office area and add new Conference Room 201A as shown in Plan.
2. Door Schedule Revisions:
 - Delete Door and Frame 207.
 - Change Door 200 from Solid Core Wood with Hollow Metal frame to Aluminum door & frame. Door size to remain 7'-6" H x 3'-0" W.
 - Add new Door and Frame 201A. Door to be Solid Core wood, Type 'D', Frame to be Hollow Metal.

Scale: 3/32" = 1'-0"

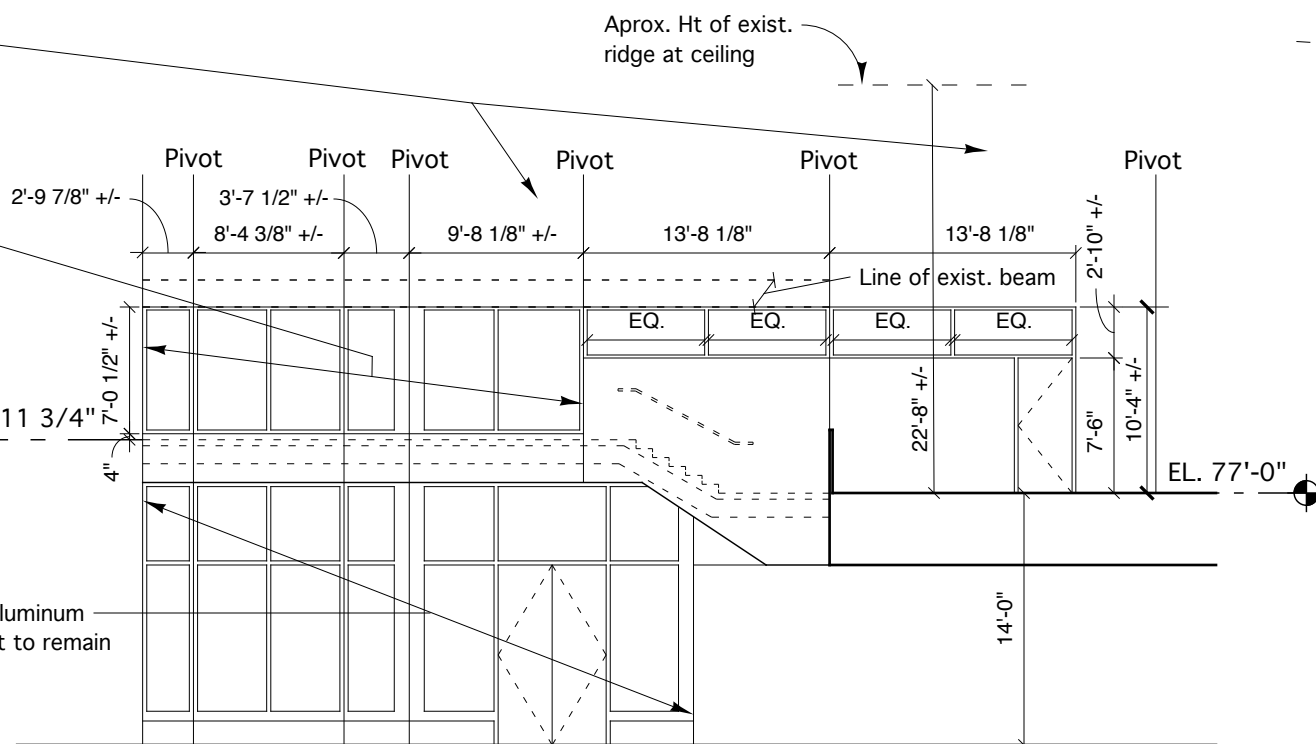


Scale: 3/32" = 1'-0"

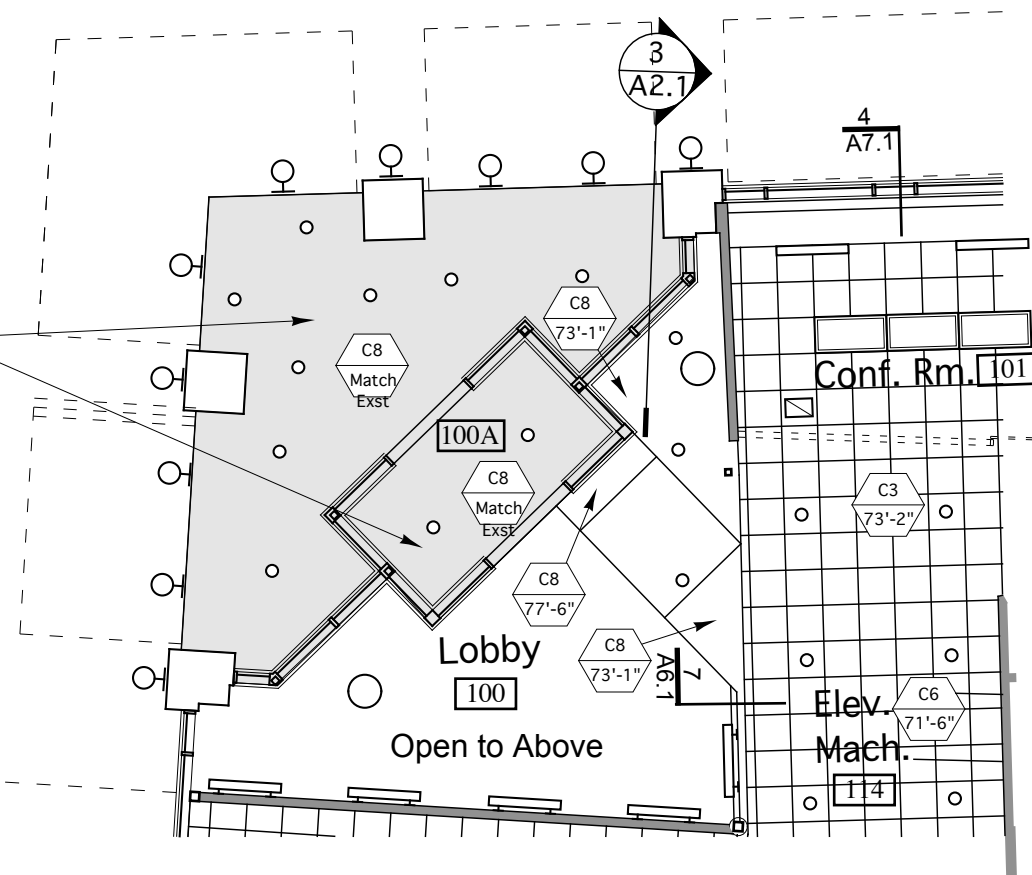
Partition Type 1 to extend up to underside of sloped and flat pine board ceiling above.

New aluminum storefront. Head location is as required to clear bottom of exist'g steel beam running diagonally between columns A2/N8 & E2/N10. Storefront sill to be located 4" above finish floor. Adjust storefront height if required based on field verified dimensions. Vertical mullions to match dimension of and align with exist. vertical mullions below.

Existing aluminum storefront to remain



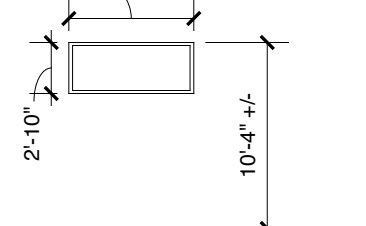
Shaded area represents extent of spray foam insulation to be applied to underside of metal deck per Section on Page 5. Existing Gypsum soffit board ceiling and GWB vestibule ceiling shall be removed and new ceilings installed at same location.



FIRST FLOOR CEILING PLAN

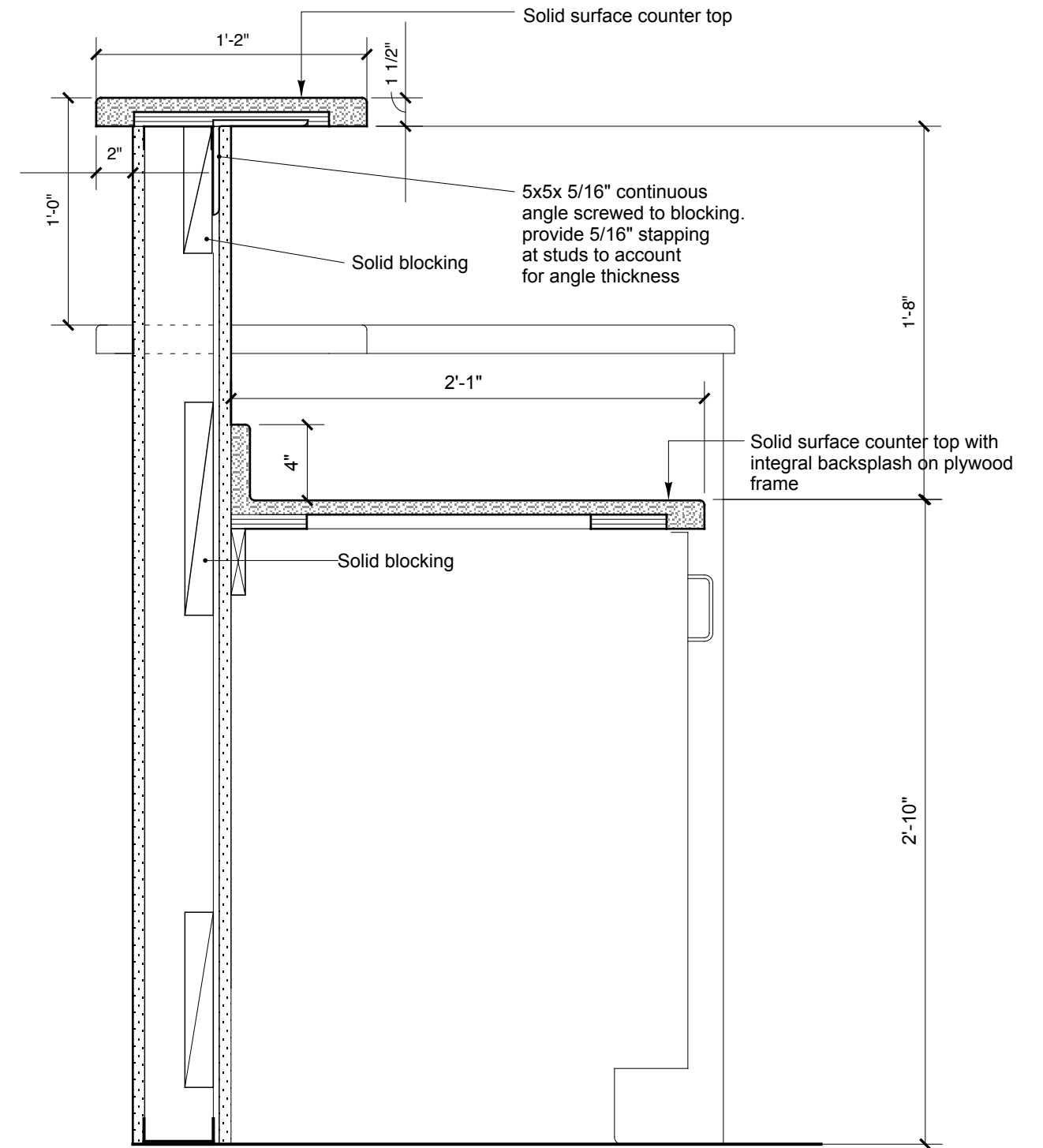
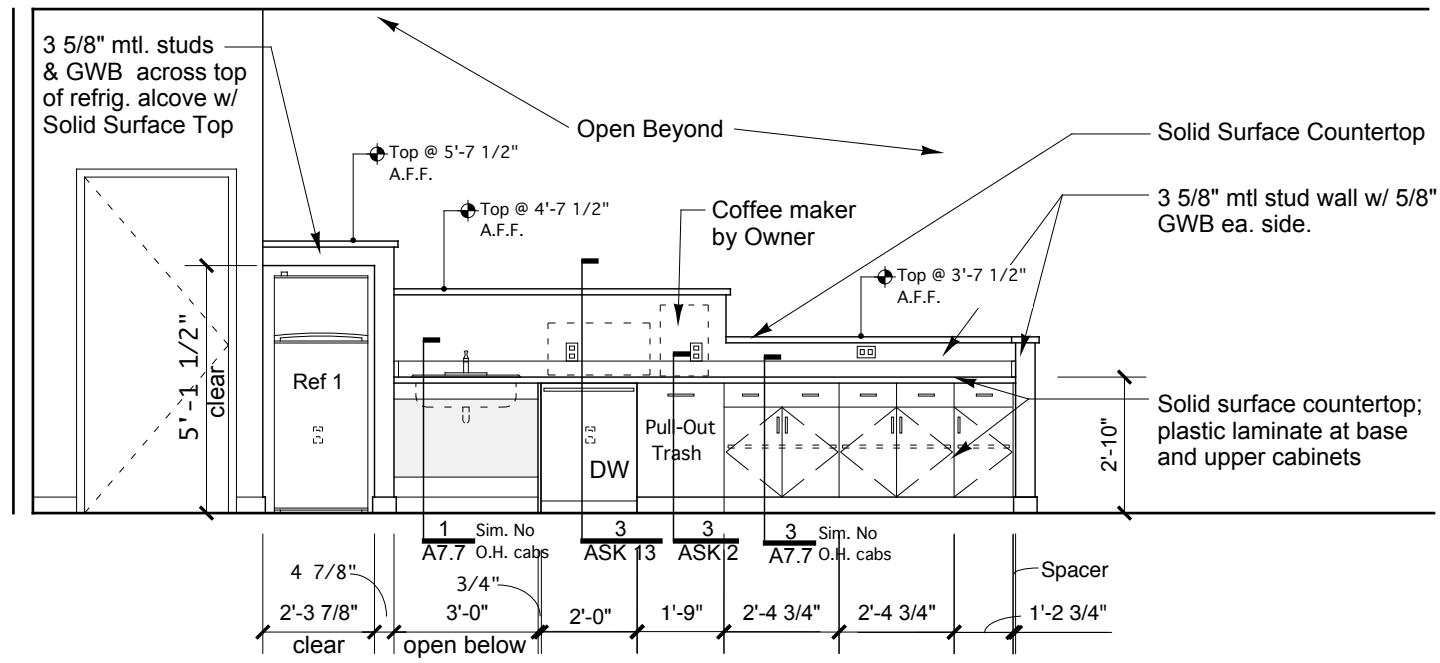
SCALE: 3/32" = 1'-0"

Width to match width of single lite at interior storefront 3.4

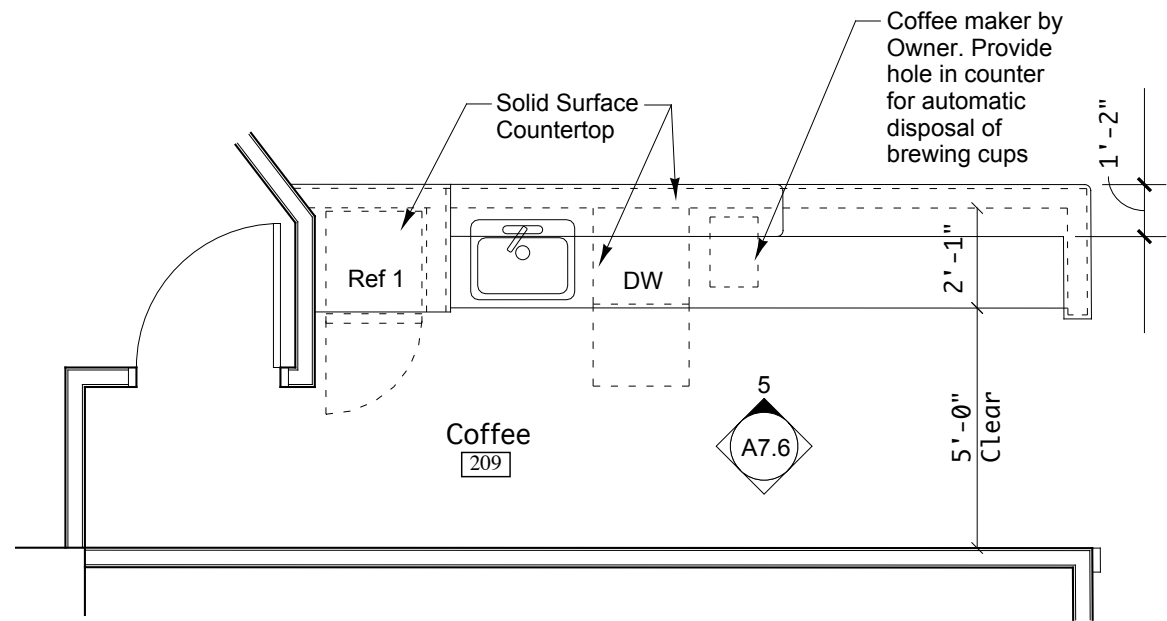


3.4 INTERIOR STOREFRONT ELEVATION
SCALE: 1/4" = 1'-0"

3.5 INTERIOR STOREFRONT ELEVATION
SCALE: 1/4" = 1'-0"



2 COFFEE 209 ELEVATION
SCALE: 1/4" = 1'-0"



1 COFFEE 209 PLAN
SCALE: 1/4" = 1'-0"

3 COFFEE SECTION at MILLWORK
SCALE: 1 1/2" = 1'-0"

