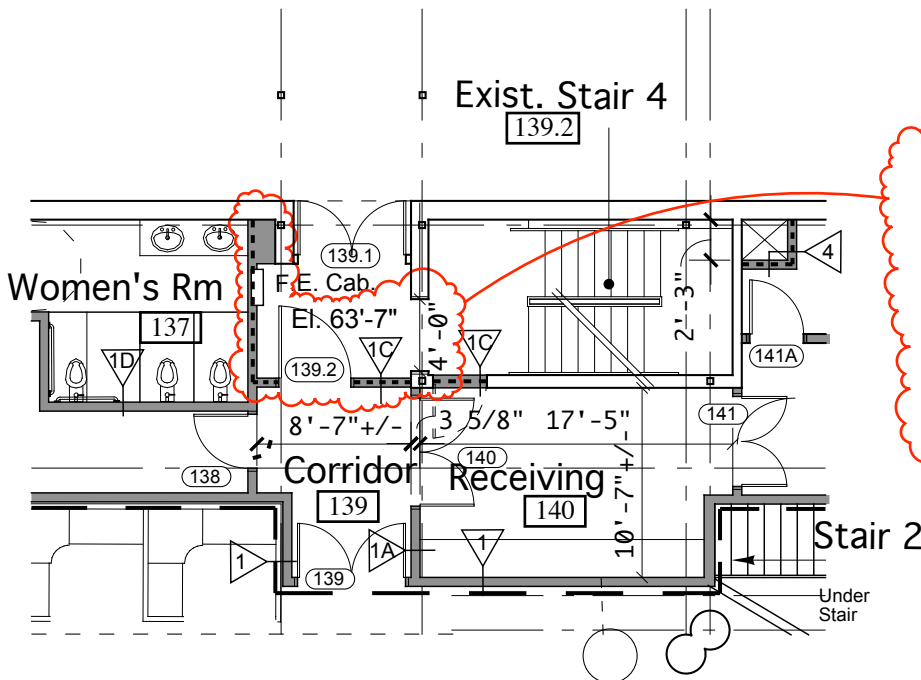


Relocate door 107 as shown. Relocate door 108.1 into new 1 hour rated cross corridor partition type 1C as shown. Provide 48" wide GWB finished doorway opng. at former location of door 108.1. Revise partitions enclosing corridor to be 1 hour rated. At corridor ceiling provide 1 hr. rated gwb ceiling assembly at underside of structure above consisting of 5/8" GWB on metal suspension system in addition to the suspended ACT ceiling specified for this area.

FIRST FLOOR PLAN REVISIONS AT STAIR 1

Scale: 3/32" = 1'-0"



Relocate door 139.2 into new 1 hour rated cross corridor partition type 1C as shown. Change door width from 36" to 48". Enlarge doorway opening at former location of door 139.2 to 48" wide. Revise partition at Women's Room to be 1 hr. rated. Add an exit sign at corridor 139 above door 139.2

FIRST FLOOR PLAN REVISIONS AT STAIR 4

Scale: 3/32" = 1'-0"