

**POWERPAY
OFFICE FIT
UP**

**Winton Scott
Architects
5 Milk Street
Portland, ME 04101**

**Wright Ryan
Construction, Inc.
10 Danforth Street
Portland, ME 04101**

**Becker Structural
Engineers, Inc.
75 York Street
Portland, Maine 04101**

**Mechanical Systems
Engineers
10 Royal River Center
Yarmouth, Maine 04096**

**Bartlett Design
942 Washington St.
Bath, Maine 04530**

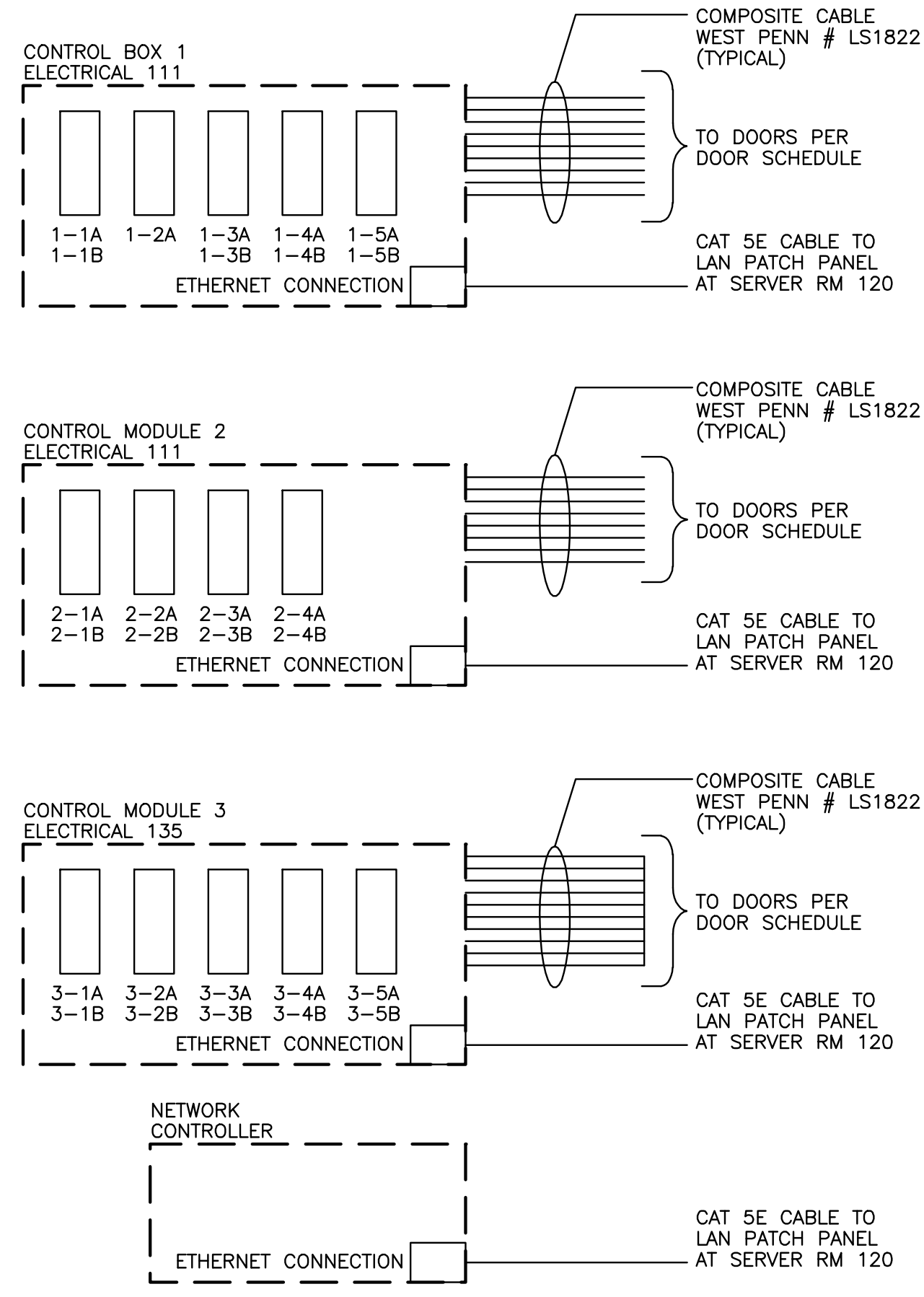
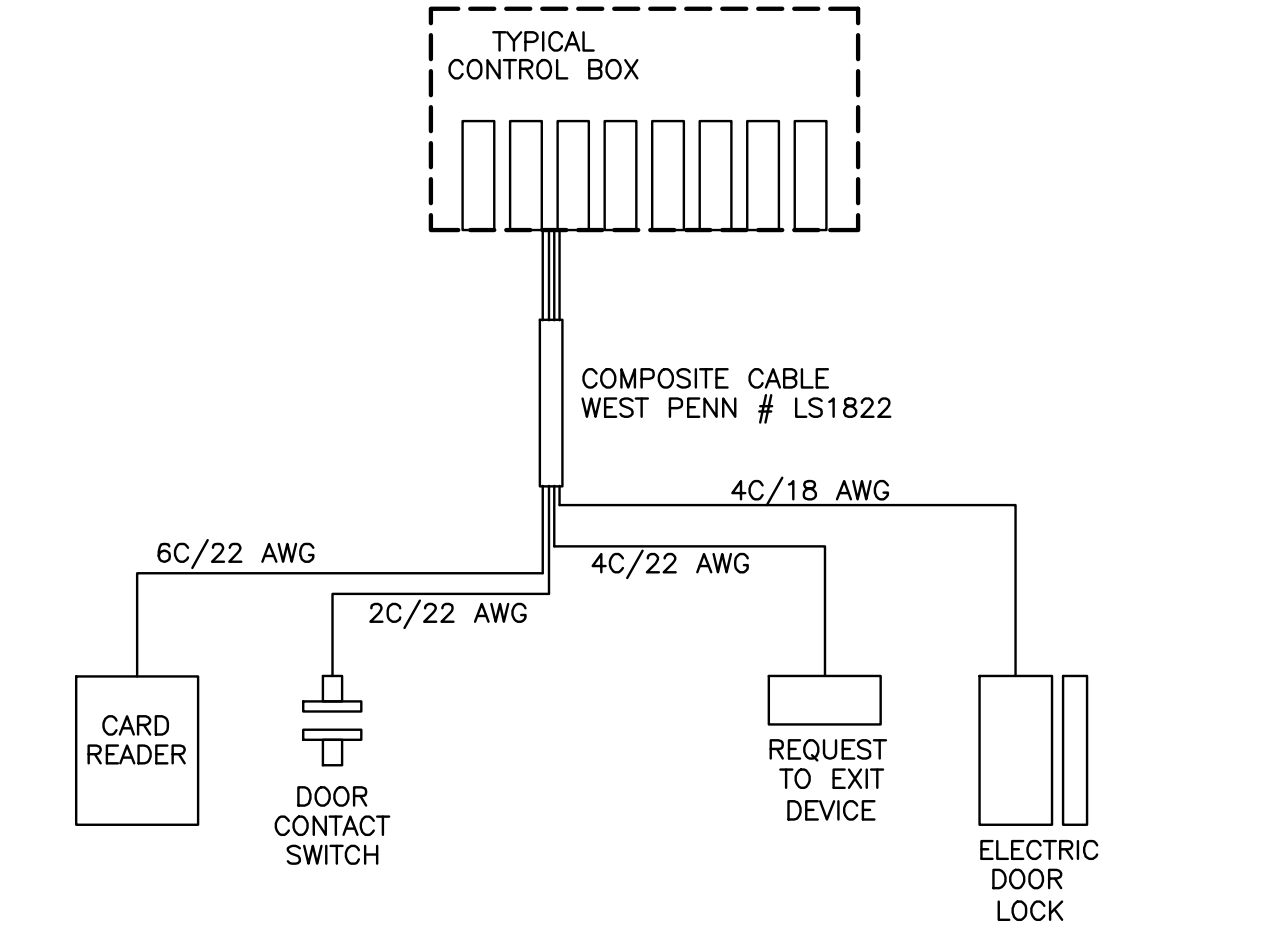
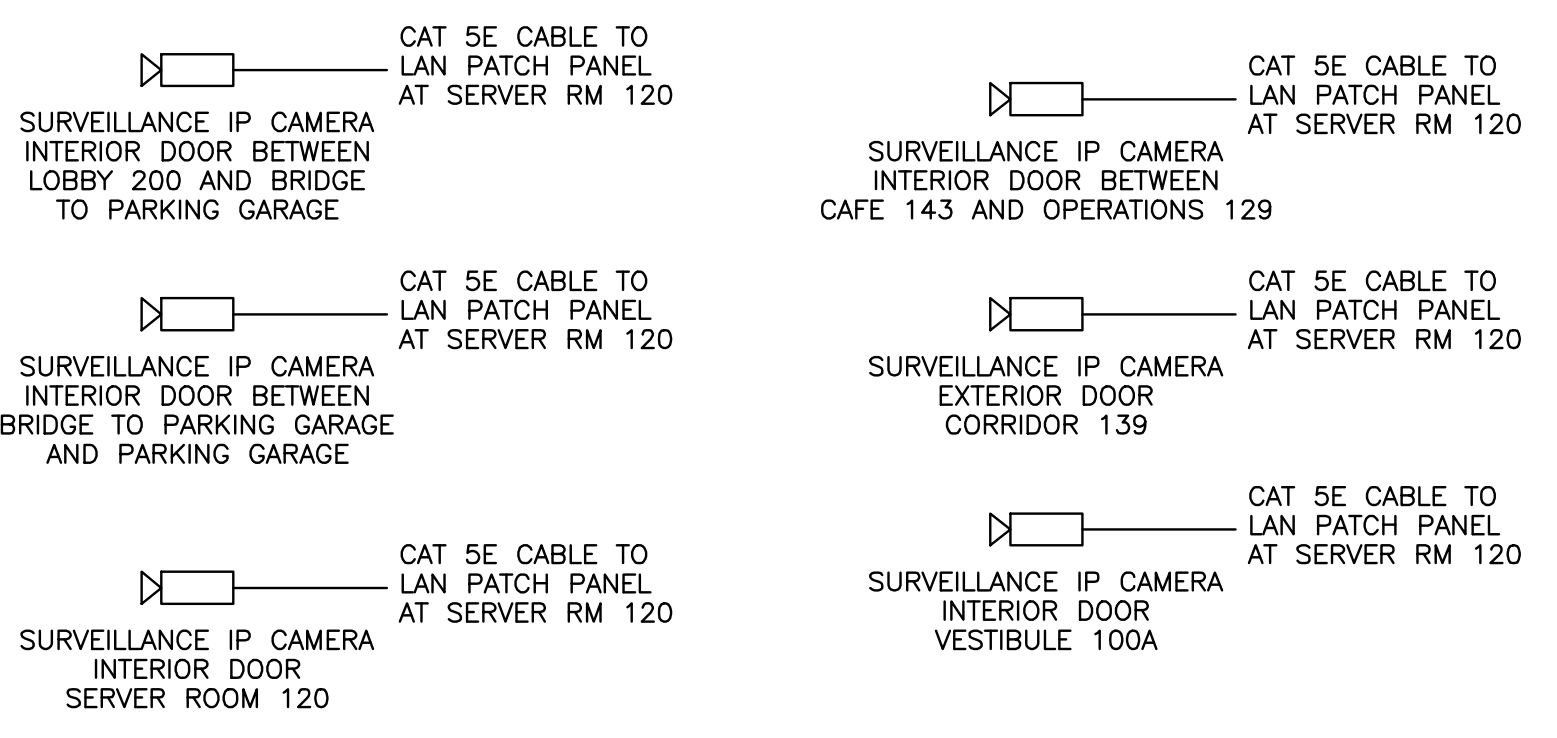
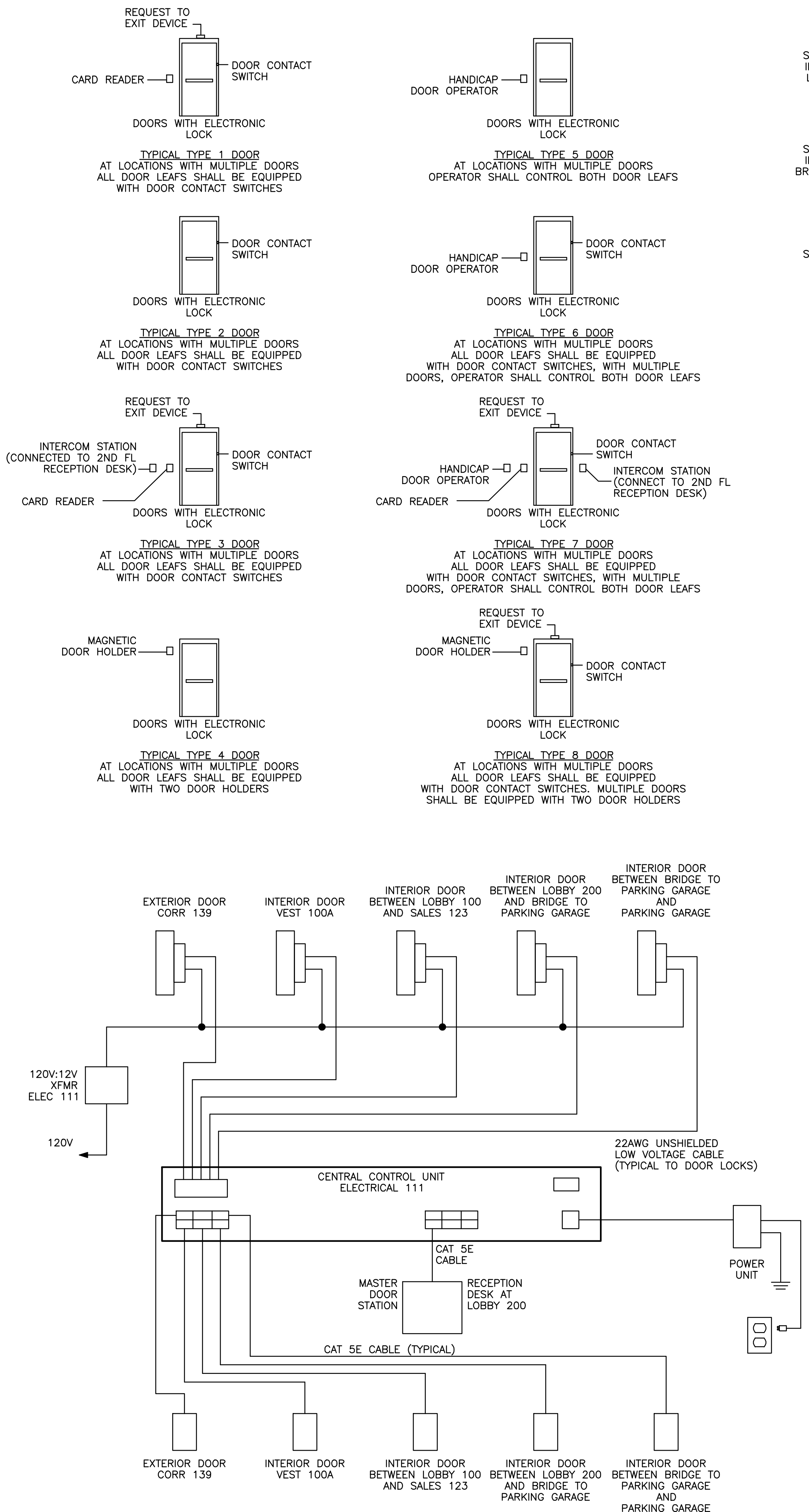
**Fore Solutions
386 Fore Street
Portland, Maine 04101**

**DOOR CONTROL
WIRING DIAGRAMS
& SCHEDULE**

E3.5

| DOOR CONTROL SCHEDULE | | | | |
|--|----------|---------------|------------------|---|
| DOOR LOCATION | DOOR TYF | POWFR CIRCUIT | CONTROL FR NUMBR | DOOR OPERATION |
| VFSTIBUIF 143A EXTRIOR DOOR | 2 | 3-1A | P-F1 #31 | UNIOCKFD DURING OCCUPIFD HOURS; IOCKFD DURING UNOCCUPIFD HOURS. |
| VFSTIBUIF 143A INTRIOR DOOR | 2 | 3-1B | P-F1 #31 | UNIOCKFD DURING OCCUPIFD HOURS; IOCKFD DURING UNOCCUPIFD HOURS. |
| CAFF 144 EXTRIOR DOOR | 2 | 3-2A | P-F1 #31 | UNIOCKFD DURING OCCUPIFD HOURS; IOCKFD DURING UNOCCUPIFD HOURS. |
| LOBBY 143 EXTRIOR DOOR AT RAMP | 5 | 3-2B | P-F1 #31 | UNIOCKFD DURING OCCUPIFD HOURS; IOCKFD DURING UNOCCUPIFD HOURS. |
| INTRIOR DOOR BFTWFFN LOBBY 143 AND CAFF 144 (NOTF 1) | 4 | 3-3A | P-F1 #33 | DOORS HFID OPFN (INTFRIOCKFD WITH FIRF ALARM SYSTFM). |
| INTRIOR DOOR BFTWFFN CAFF 143 AND OPFRATIONS 129 | 1 | 3-3B | P-F1 #33 | DOOR NORMAILY IOCKFD FROM OUTSIDF. OUTSIDF ACCFSS ONLY BY CARD RFADFR (FXIT FGRFSS AIOWFD). |
| CORRIDOR 139 EXTRIOR DOOR | 3 | 3-4A | P-F1 #33 | DOOR NORMAILY IOCKFD FROM OUTSIDF. OUTSIDF ACCFSS BY CARD RFADFR (FXIT FGRFSS AIOWFD). OUTSIDF INTFCOM STATION TO CALL SCOND FLOOR RCFPTION. SCOND FLOOR RCFPTION TO RFIASF DOOR IOCK. |
| FMPLOYFF LOUNCF EXTRIOR DOOR | 2 | 3-5A | P-F1 #32 | DOOR NORMAILY IOCKFD FROM OUTSIDF (FXIT FGRFSS AIOWFD). |
| FMPLOYFF LOUNCF EXTRIOR DOOR | 2 | 3-5B | P-F1 #32 | DOOR NORMAILY IOCKFD FROM OUTSIDF (FXIT FGRFSS AIOWFD). |
| VFSTIBUIF 100A EXTRIOR DOOR | 6 | 1-1A | P-F1 #34 | UNIOCKFD DURING OCCUPIFD HOURS; IOCKFD DURING UNOCCUPIFD HOURS. |
| VFSTIBUIF 100A INTRIOR DOOR | 7 | 1-1B | P-F1 #34 | UNIOCKFD DURING OCCUPIFD HOURS; IOCKFD DURING UNOCCUPIFD HOURS. OUTSIDF ACCFSS BY CARD RFADFR (FXIT FGRFSS AIOWFD). INTFCOM STATION TO CALL SCOND FLOOR RCFPTION. SCOND FLOOR RCFPTION TO RFIASF DOOR IOCK. |
| INTRIOR DOOR BFTWFFN LOBBY 100 AND SAIFS 123 | 3 | 1-2A | P-F1 #34 | UNIOCKFD DURING OCCUPIFD HOURS; IOCKFD DURING UNOCCUPIFD HOURS. OUTSIDF ACCFSS BY CARD RFADFR (FXIT FGRFSS AIOWFD). INTFCOM STATION TO CALL SCOND FLOOR RCFPTION. SCOND FLOOR RCFPTION TO RFIASF DOOR IOCK. |
| INTRIOR DOOR BFTWFFN STAIR 108 AND SAIFS 123 (NOTF 2) | 8 | 1-3A | P-F1 #36 | DOORS HFID OPFN (INTFRIOCKFD WITH FIRF ALARM SYSTFM). |
| INTRIOR DOOR BFTWFFN STAIR 108 AND CORRIDOR 106 | 1 | 1-3B | P-F1 #36 | DOOR NORMAILY IOCKFD FROM OUTSIDF. OUTSIDF ACCFSS BY CARD RFADFR (FXIT FGRFSS AIOWFD). |
| CORRIDOR 106 EXTRIOR DOOR | 1 | 1-4A | P-F1 #36 | DOOR NORMAILY IOCKFD FROM OUTSIDF. OUTSIDF ACCFSS BY CARD RFADFR (FXIT FGRFSS AIOWFD). |
| EXTRIOR DOOR (ADJACNT TO SFRVFR ROOM 120) | 2 | 1-4B | P-F1 #36 | DOOR NORMAILY IOCKFD FROM OUTSIDF (FXIT FGRFSS AIOWFD). |
| INTRIOR DOOR SFRVFR ROOM 120 | 1 | 1-5A | P-F1 #34 | DOOR NORMAILY IOCKFD FROM OUTSIDF. OUTSIDF ACCFSS BY CARD RFADFR (FXIT FGRFSS AIOWFD). |
| INTRIOR DOOR STORACF 141 | 1 | 3-4B | P-F1 #33 | DOOR NORMAILY IOCKFD FROM OUTSIDF. OUTSIDF ACCFSS BY CARD RFADFR (FXIT FGRFSS AIOWFD). |
| INTRIOR DOOR STORACF 121 | 1 | 1-5B | P-F1 #32 | DOOR NORMAILY IOCKFD FROM OUTSIDF. OUTSIDF ACCFSS BY CARD RFADFR (FXIT FGRFSS AIOWFD). |
| INTRIOR DOOR BFTWFFN LOBBY 200 AND BRIDCF TO PARKING GARACF | 7 | 2-1A | P-F1 #35 | UNIOCKFD DURING OCCUPIFD HOURS; IOCKFD DURING UNOCCUPIFD HOURS. OUTSIDF ACCFSS BY CARD RFADFR (FXIT FGRFSS AIOWFD). INTFCOM STATION TO CALL SCOND FLOOR RCFPTION. SCOND FLOOR RCFPTION TO RFIASF DOOR IOCK. |
| INTRIOR DOOR BFTWFFN BRIDCF TO PARKING GARACF AND PARKING GARACF | 7 | 2-1B | P-F1 #35 | UNIOCKFD DURING OCCUPIFD HOURS; IOCKFD DURING UNOCCUPIFD HOURS. OUTSIDF ACCFSS BY CARD RFADFR (FXIT FGRFSS AIOWFD). INTFCOM STATION TO CALL SCOND FLOOR RCFPTION. SCOND FLOOR RCFPTION TO RFIASF DOOR IOCK. |
| INTRIOR DOOR SCOND FLOOR STAIR 108 | 4 | 2-2A | P-F1 #38 | DOORS HFID OPFN (INTFRIOCKFD WITH FIRF ALARM SYSTFM). |
| INTRIOR DOOR SCOND FLOOR STAIR 108 | 4 | 2-2B | P-F1 #38 | DOORS HFID OPFN (INTFRIOCKFD WITH FIRF ALARM SYSTFM). |
| INTRIOR DOOR BFTWFFN LOBBY 200 AND FINANCF 216 | 1 | 2-3A | P-F1 #35 | DOOR NORMAILY IOCKFD FROM OUTSIDF. OUTSIDF ACCFSS BY CARD RFADFR (FXIT FGRFSS AIOWFD). |
| INTRIOR DOOR BFTWFFN LOBBY 200 AND COFFF 209 | 1 | 2-3B | P-F1 #38 | DOOR NORMAILY IOCKFD FROM OUTSIDF. OUTSIDF ACCFSS BY CARD RFADFR (FXIT FGRFSS AIOWFD). |
| INTRIOR DOOR BFTWFFN LOBBY 200 AND CORRIDOR 208 | 1 | 2-4A | P-F1 #35 | DOOR NORMAILY IOCKFD FROM OUTSIDF. OUTSIDF ACCFSS BY CARD RFADFR (FXIT FGRFSS AIOWFD). |
| INTRIOR DOOR BFTWFFN LOBBY 200 AND MFFTING 207 | 1 | 2-4B | P-F1 #38 | DOOR NORMAILY IOCKFD FROM OUTSIDF. OUTSIDF ACCFSS BY CARD RFADFR (FXIT FGRFSS AIOWFD). |

NOTES:
1. WHFRF INDICATFD PROVIDF WIRING FOR FUTUR CARD RFADFR, RFQFST TO FXIT DFCVCF AND DOOR POSITION SWITCH.
2. WHFRF INDICATFD PROVIDF WIRING FOR FUTUR CARD RFADFR AND RFQFST TO FXIT DFCVCF.



DOOR INTERCOM DIAGRAM
NOT TO SCALE

DOOR ACCESS CONTROL DIAGRAM
NOT TO SCALE