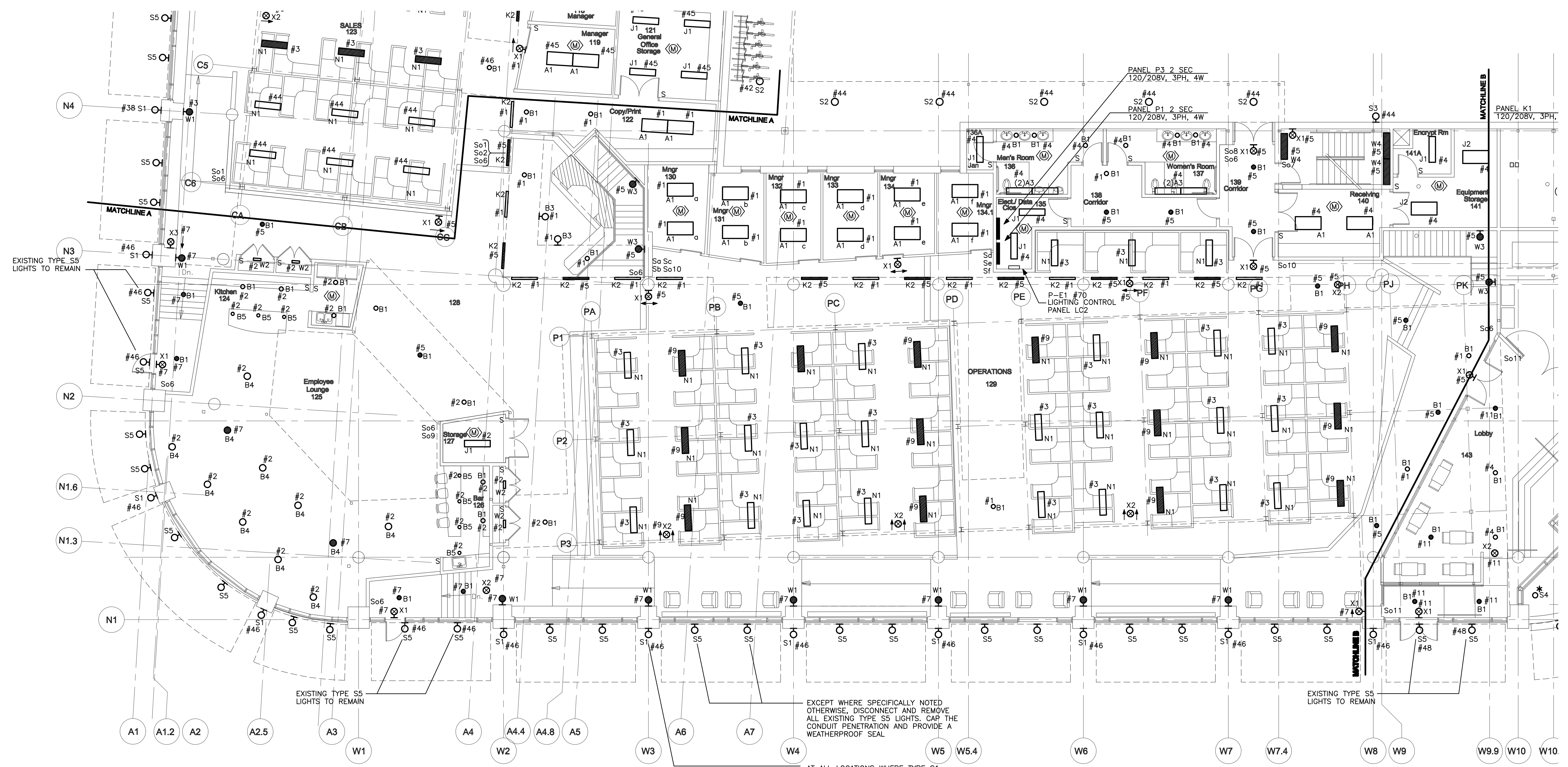


- PART B NOTES:**
- INTERIOR LIGHTS WITH SHADED PATTERNS SHALL BE CIRCUITED TO PANEL P-EL1. ALL OTHER INTERIOR LIGHTS IN AREA B SHALL BE CIRCUITED TO PANEL P1.
 - EXTERIOR LIGHTS AROUND PLAN AREA B SHALL BE CIRCUITED TO PANEL P3.
 - LIGHT SWITCHES INDICATED BY So6, So7, So8, So9, So10 SHALL BE LOW VOLTAGE CONTROL SWITCHES WIRED TO THE LIGHTING CONTROL PANEL THAT IS LOCATED IN ELEC/DATA CLOSET 135.



EXCEPT WHERE SPECIFICALLY NOTED OTHERWISE, DISCONNECT AND REMOVE ALL EXISTING TYPE S5 LIGHTS. CAP THE CONDUIT PENETRATION AND PROVIDE A WEATHERPROOF SEAL

AT ALL LOCATIONS WHERE TYPE S1 LIGHTS ARE INDICATED, REMOVE EXISTING EXTERIOR LIGHT AND PROVIDE NEW TYPE S1 LIGHT IN ITS PLACE

1 FIRST FLOOR LIGHTING PLAN - PART B
E2.2 1/8" = 1'-0"

**POWERPAY
OFFICE FIT
UP**

**Winton Scott
Architects
5 Milk Street
Portland, ME 04101**

**Wright Ryan
Construction, Inc.
10 Danforth Street
Portland, ME 04101**

**Becker Structural
Engineers, Inc.
75 York Street
Portland, Maine 04101**

**Mechanical Systems
Engineers
10 Royal River Center
Yarmouth, Maine 04096**

**Bartlett Design
942 Washington St.
Bath, Maine 04530**

**Fore Solutions
386 Fore Street
Portland, Maine 04101**

**FIRST FLOOR
LIGHTING
PLAN-PART B**

E2.2