

POWERPAY OFFICE FIT UP

Winton Scott
Architects
5 Milk Street
Portland, ME 04101

Wright Ryan
Construction, Inc.
10 Danforth Street
Portland, ME 04101

Becker Structural
Engineers, Inc.
75 York Street
Portland, Maine 04101

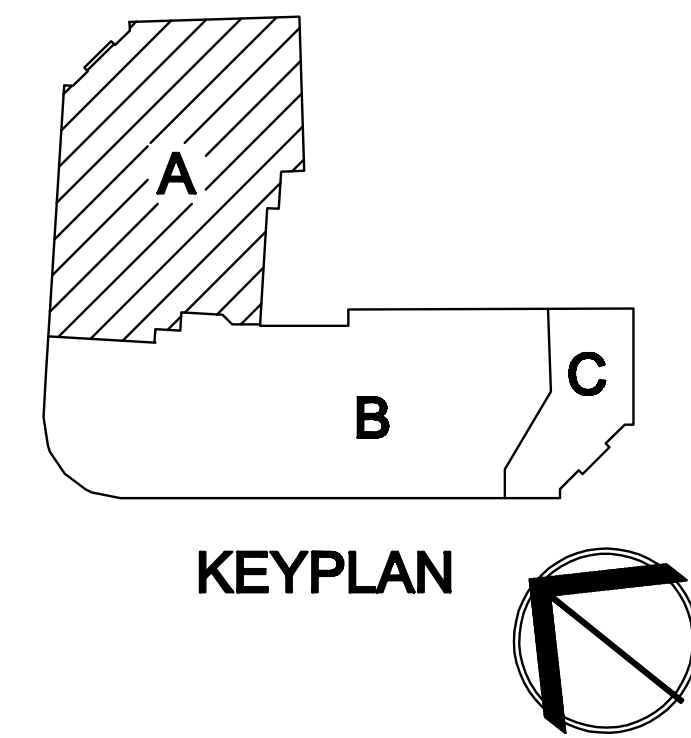
Mechanical Systems
Engineers
10 Royal River Center
Yarmouth, Maine 04096

Bartlett Design
942 Washington St.
Bath, Maine 04530

Fore Solutions
386 Fore Street
Portland, Maine 04101

FIRST FLOOR LIGHTING PLAN-PART A

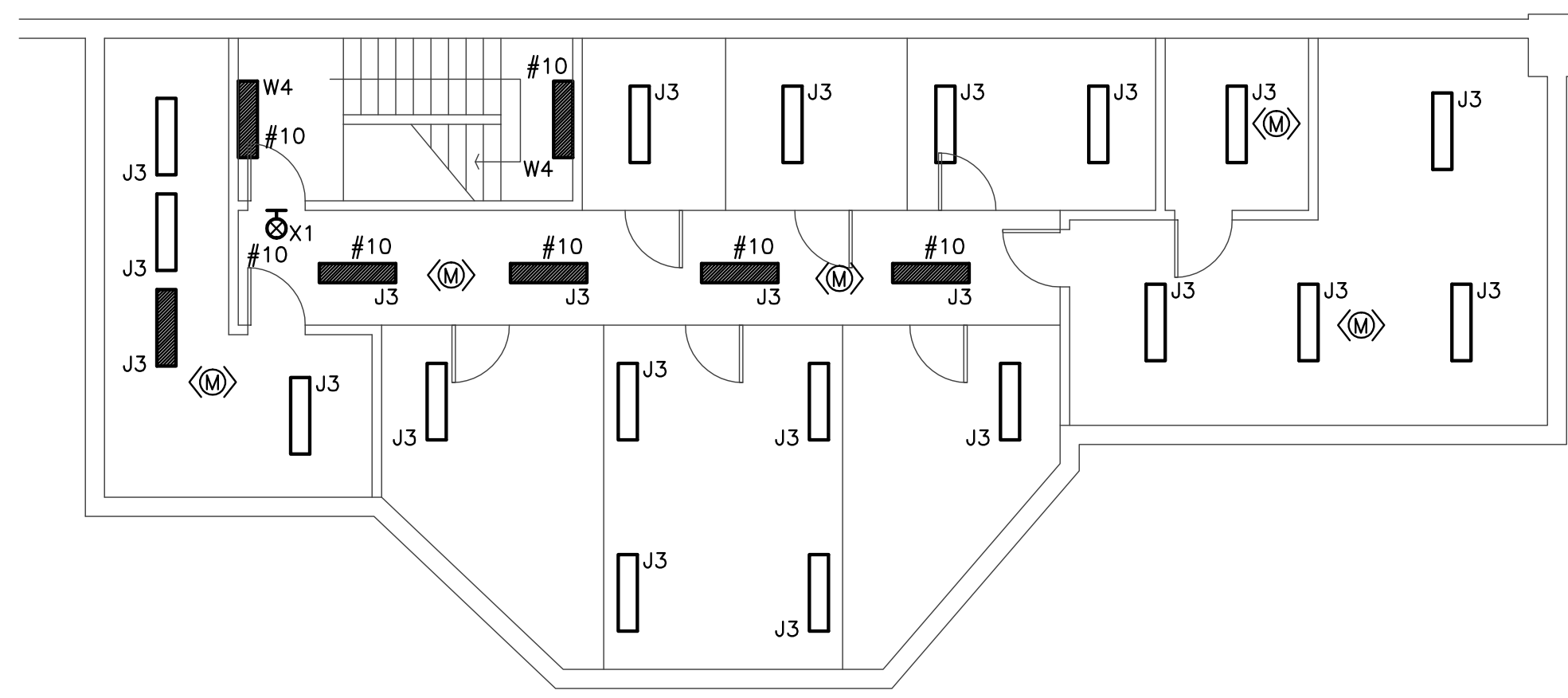
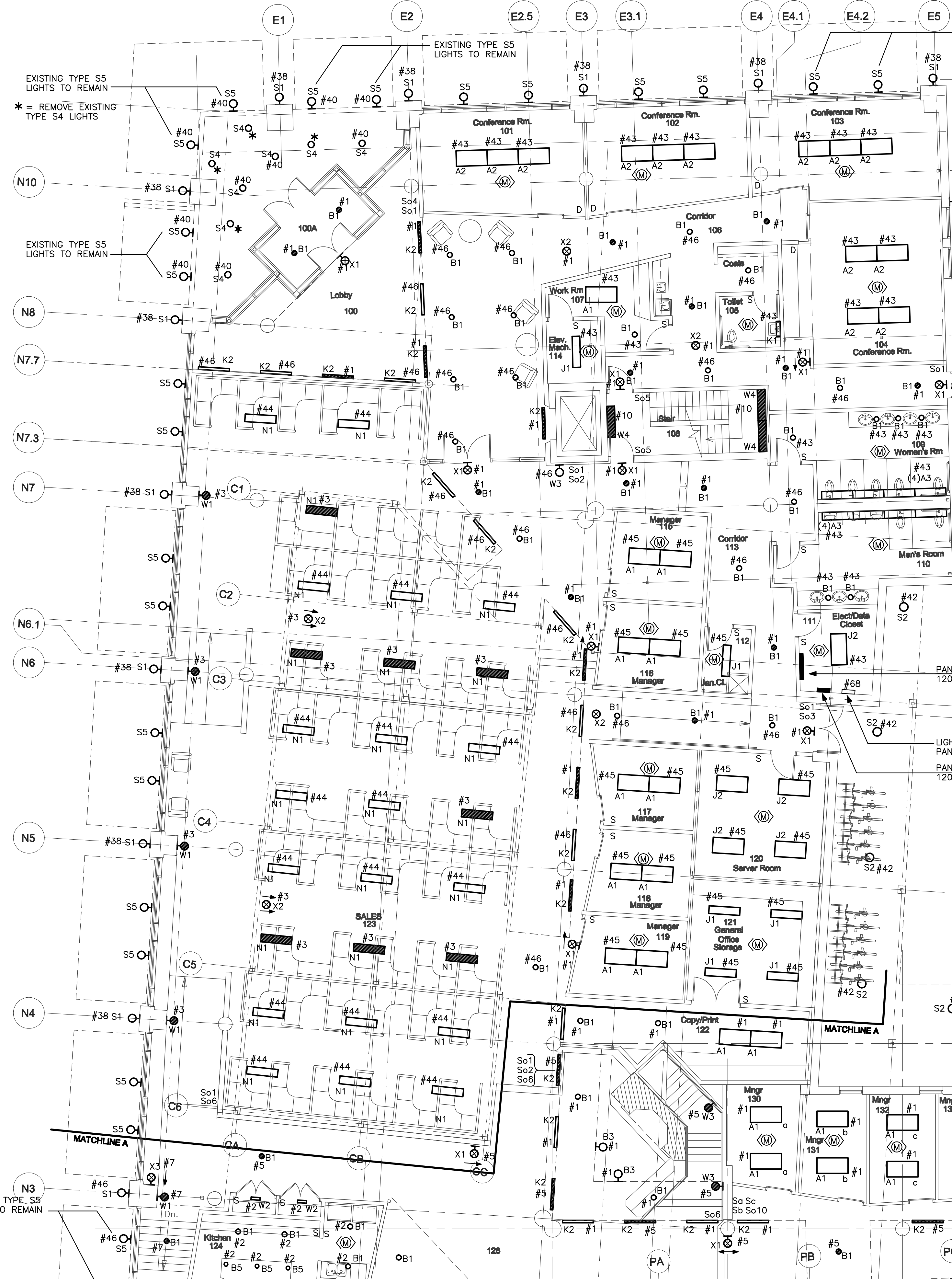
E2.1



- PART A NOTES:
1. INTERIOR LIGHTS WITH SHADED PATTERNS SHALL BE CIRCUITED TO PANEL P-EL1. ALL OTHER INTERIOR LIGHTS IN AREA A SHALL BE CIRCUITED TO PANEL P-E1.
 2. EXTERIOR LIGHTS AROUND PLAN AREA A SHALL BE CIRCUITED TO PANEL P1.
 3. LIGHT SWITCHES INDICATED BY So1, So2, So3, So4, & So5 SHALL BE LOW VOLTAGE CONTROL SWITCHES WIRED TO THE LIGHTING CONTROL PANEL THAT IS LOCATED IN ELEC/DATA CLOSET 111.

EXCEPT WHERE SPECIFICALLY NOTED OTHERWISE, DISCONNECT AND REMOVE ALL EXISTING TYPE S5 LIGHTS. CAP THE CONDUIT PENETRATION AND PROVIDE A WEATHERPROOF SEAL.

AT ALL LOCATIONS WHERE TYPE S1 LIGHTS ARE INDICATED, REMOVE EXISTING EXTERIOR LIGHT AND PROVIDE NEW TYPE S1 LIGHT IN ITS PLACE.



1 BASEMENT LIGHTING PLAN
E2.1
1/8" = 1'-0"

EXCEPT FOR CORRIDOR AND STAIR LIGHTING, EXISTING LIGHTING, SWITCH CONTROL AND CIRCUITING TO REMAIN AT BASEMENT LEVEL. PROVIDE NEW CIRCUIT WIRING FOR EXISTING STAIR AND CORRIDOR LIGHTS. ADD OCCUPANCY SENSORS TO CONTROL BASEMENT LEVEL LIGHTING WITHIN INDIVIDUAL ROOMS.

2 FIRST FLOOR LIGHTING PLAN - PART A
E2.1
1/8" = 1'-0"