

POWERPAY OFFICE FIT UP

**Winton Scott
Architects**
5 Milk Street
Portland, ME 04101

**Wright Ryan
Construction, Inc.**
10 Danforth Street
Portland, ME 04101

**Becker Structural
Engineers, Inc.**
75 York Street
Portland, Maine 04101

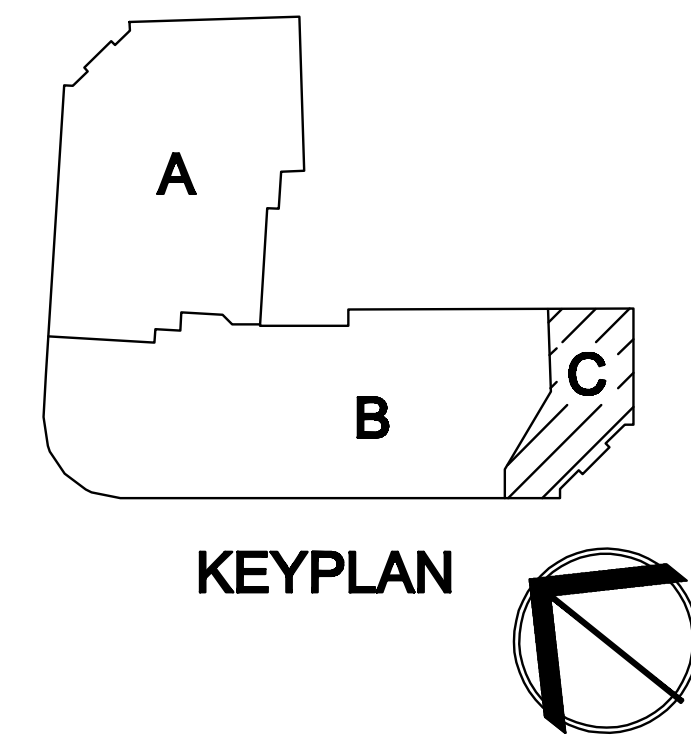
**Mechanical Systems
Engineers**
10 Royal River Center
Yarmouth, Maine 04096

Bartlett Design
942 Washington St.
Bath, Maine 04530

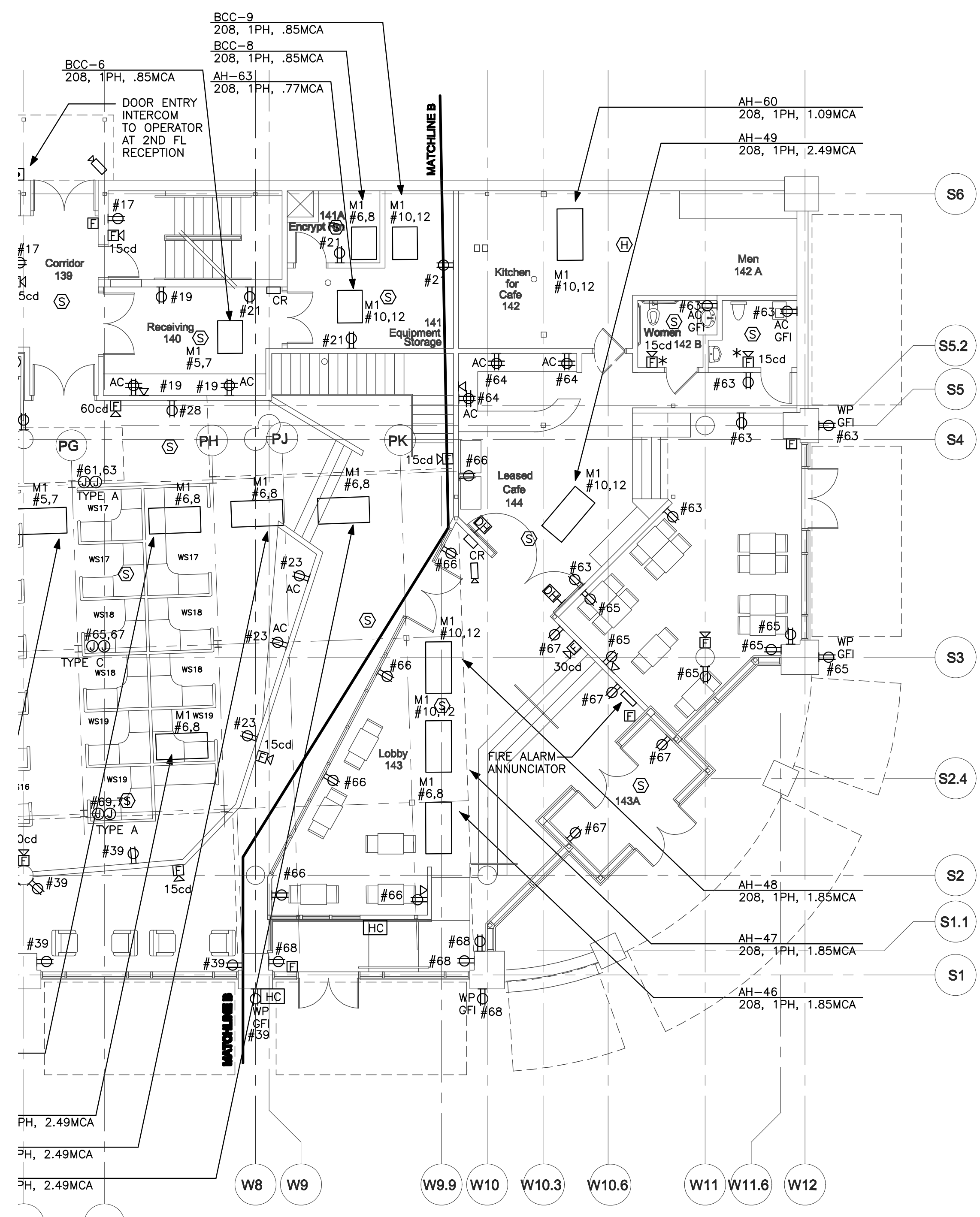
Fore Solutions
386 Fore Street
Portland, Maine 04101

FIRST FLOOR POWER PLAN-PART C

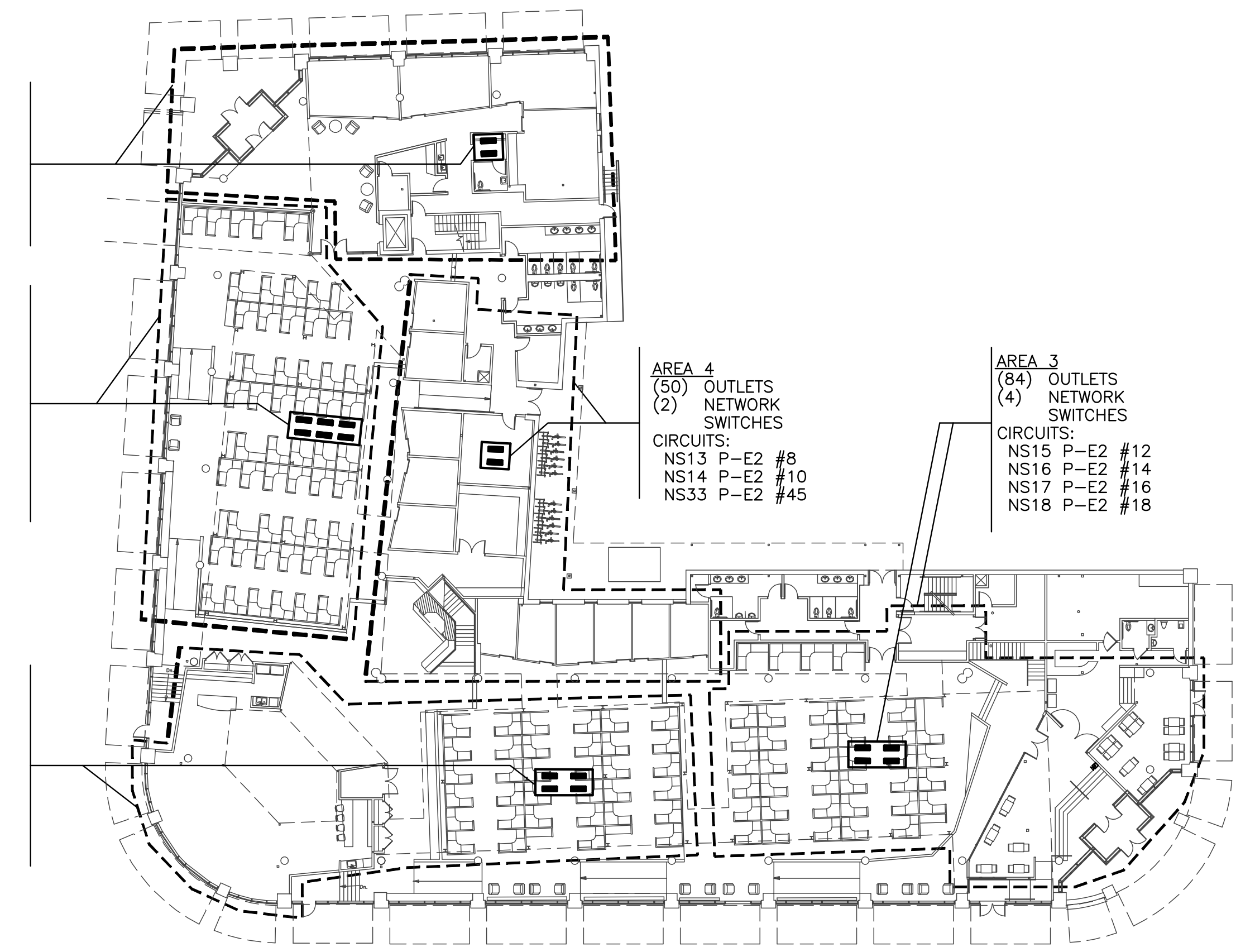
E1.3



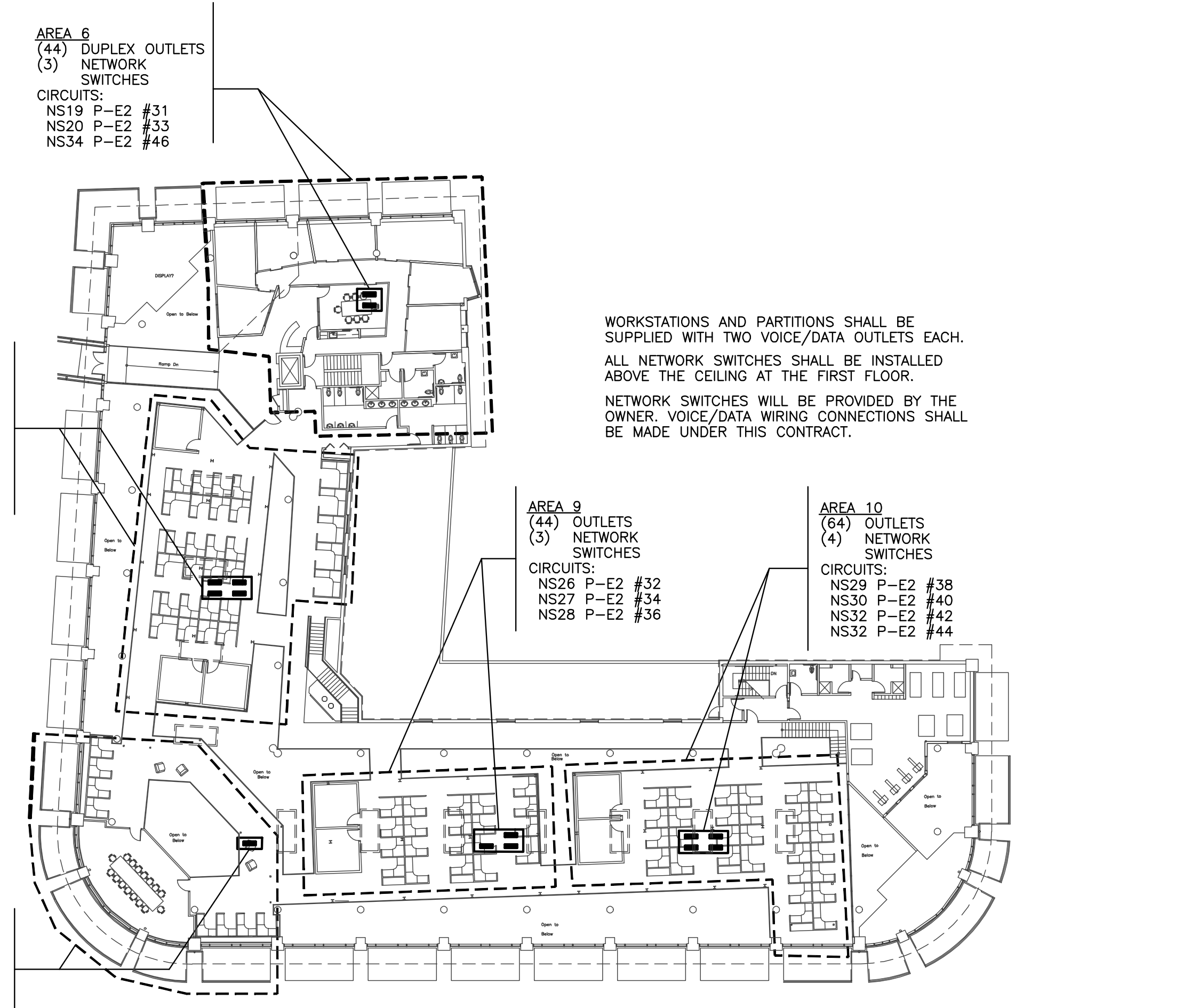
- NOTES:
1. CIRCUIT DESIGNATIONS LOCATED IN PLAN AREA C REFER TO PANEL P1.
 2. VOICE/DATA WIRING FROM OUTLETS SHALL BE EXTENDED TO NETWORK SWITCHES LOCATED IN THE CEILING SPACE BETWEEN THE FIRST FLOOR AND THE MEZZANINE. SEE THIS SHEET FOR KEY PLANS DESIGNATING SHOWING BUILDING AREA GROUPS AND THEIR ASSOCIATED NETWORK SWITCHES AS WELL AS CIRCUITING INFORMATION FOR NETWORK SWITCHES.
 3. WORKSTATIONS LOCATED IN PLAN AREA C SHALL BE CIRCUITED TO PANEL P1.
 4. SEE SHEET E1.1 FOR FURNITURE PARTITION WIRING KEY.



3 FIRST FLOOR POWER PLAN - PART C
1/8" = 1'-0"



1 1ST FL DATA NETWORK SWITCH COVERAGE AREA
NOT TO SCALE



2 2ND FL DATA NETWORK SWITCH COVERAGE AREA
NOT TO SCALE

AREA 1
(32) OUTLETS
(2) NETWORK SWITCHES
CIRCUITS:
NS1 P-E2 #1
NS2 P-E2 #3

AREA 2
(106) OUTLETS
(6) NETWORK SWITCHES
CIRCUITS:
NS3 P-E2 #5
NS4 P-E2 #7
NS5 P-E2 #9
NS6 P-E2 #11
NS7 P-E2 #13
NS8 P-E2 #15

AREA 3
(76) OUTLETS
(4) NETWORK SWITCHES
CIRCUITS:
NS9 P-E2 #17
NS10 P-E2 #2
NS11 P-E2 #4
NS12 P-E2 #6

AREA 4
(50) OUTLETS
(2) NETWORK SWITCHES
CIRCUITS:
NS13 P-E2 #8
NS14 P-E2 #10
NS33 P-E2 #45

AREA 5
(84) OUTLETS
(4) NETWORK SWITCHES
CIRCUITS:
NS15 P-E2 #12
NS16 P-E2 #14
NS17 P-E2 #16
NS18 P-E2 #18

AREA 6
(44) DUPLEX OUTLETS
(3) NETWORK SWITCHES
CIRCUITS:
NS19 P-E2 #31
NS20 P-E2 #33
NS34 P-E2 #46

AREA 7
(64) OUTLETS
(4) NETWORK SWITCHES
CIRCUITS:
NS21 P-E2 #35
NS22 P-E2 #37
NS23 P-E2 #39
NS24 P-E2 #41

AREA 9
(44) OUTLETS
(3) NETWORK SWITCHES
CIRCUITS:
NS26 P-E2 #32
NS27 P-E2 #34
NS28 P-E2 #36

AREA 10
(64) OUTLETS
(4) NETWORK SWITCHES
CIRCUITS:
NS29 P-E2 #38
NS30 P-E2 #40
NS32 P-E2 #42
NS32 P-E2 #44

WORKSTATIONS AND PARTITIONS SHALL BE SUPPLIED WITH TWO VOICE/DATA OUTLETS EACH. ALL NETWORK SWITCHES SHALL BE INSTALLED ABOVE THE CEILING AT THE FIRST FLOOR. NETWORK SWITCHES WILL BE PROVIDED BY THE OWNER. VOICE/DATA WIRING CONNECTIONS SHALL BE MADE UNDER THIS CONTRACT.