

POWER PAY OFFICE FIT UP

Winton Scott
Architects
5 Milk Street
Portland, Maine 04101

Wright Ryan
Construction, Inc.
10 Danforth Street
Portland, Maine 04101

Becker Structural
Engineers, Inc.
75 York Street
Portland, Maine 04101

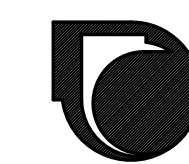
Mechanical
Systems
Engineers
10 Royal River Center
Yarmouth, Maine 04096

Bartlett Design
942 Washington Ave.
Bath, Maine 04530

Fore Solutions
386 Fore Street
Portland, Maine 04101

FIRST FL'R NORTH
REFRIGERANT
PIPING PLAN

M7

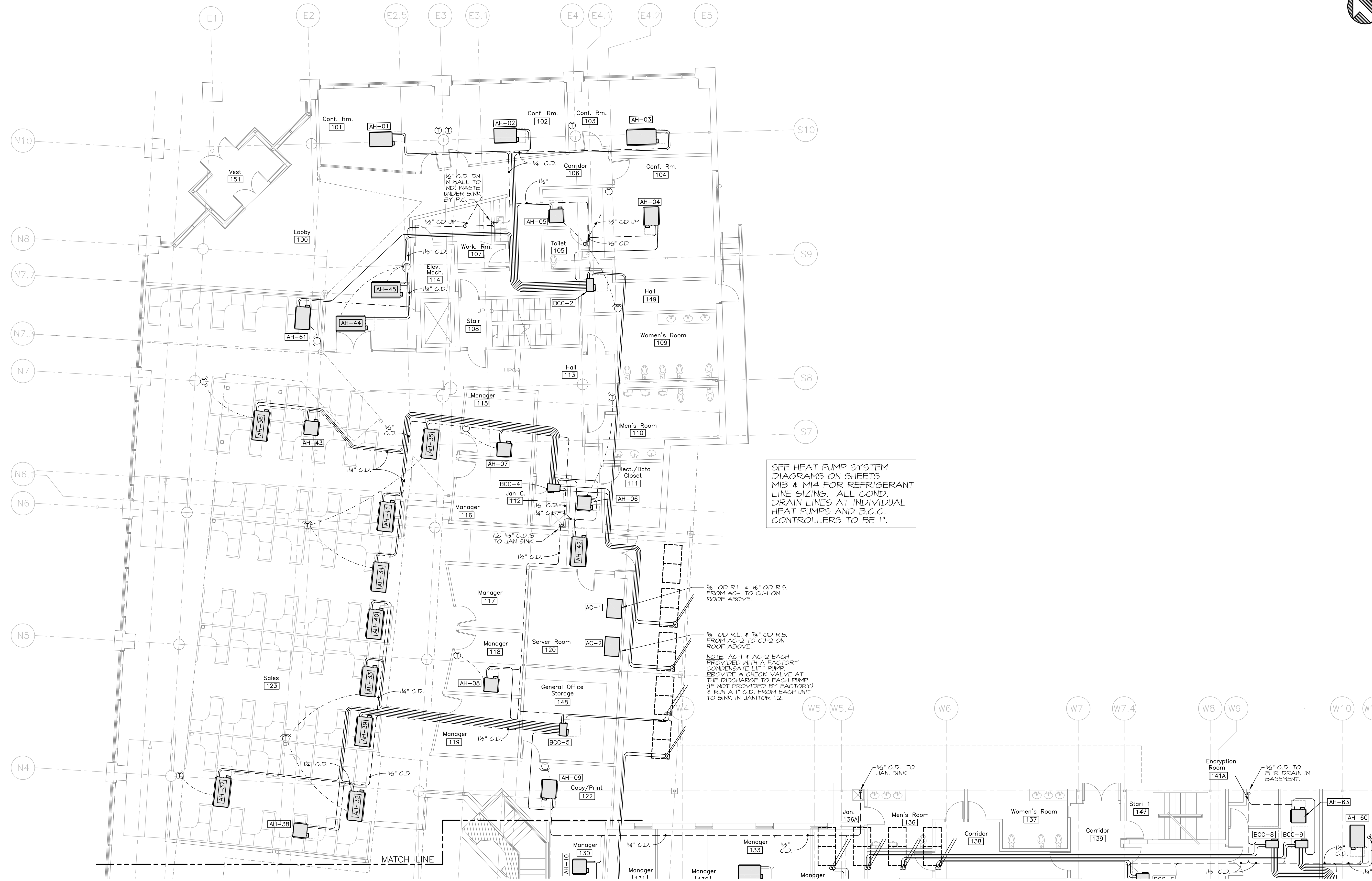


MECHANICAL SYSTEMS ENGINEERS
ROYAL RIVER CENTER, UNIT #10
10 FOREST FALLS DRIVE
YARMOUTH, MAINE 04096
VOICE: (207) 846-1441
FAX: (207) 846-1443
mechsyst@maine.ri.com
© COPYRIGHT 2009



Scale: 1/8" = 1'-0" Date: 03.20.09
M.S.E. Proj. 0837

March 24, 2009 - 1:58 PM
\\mechsys\Projects\0837 Power Pay\Drawings\0837 M7-M10.dwg



SEE HEAT PUMP SYSTEM
DIAGRAMS ON SHEETS
M13 & M14 FOR REFRIGERANT
LINE SIZING. ALL COND.
DRAIN LINES AT INDIVIDUAL
HEAT PUMPS AND B.C.C.
CONTROLLERS TO BE 1".

3/8" OD R.L. & 3/8" OD R.S.
FROM AC-1 TO CU-1 ON
ROOF ABOVE.

3/8" OD R.L. & 3/8" OD R.S.
FROM AC-2 TO CU-2 ON
ROOF ABOVE.

NOTE: AC-1 & AC-2 EACH
PROVIDED WITH A FACTORY
CONDENSATE LIFT PUMP.
PROVIDE A CHECK VALVE AT
THE DISCHARGE TO EACH PUMP
(IF NOT PROVIDED BY FACTORY)
& RUN A 1" C.D. FROM EACH UNIT
TO SINK IN JANITOR 112.

1/2" C.D. TO
JAN. SINK

1/2" C.D. TO
FLR DRAIN IN
BASEMENT.

MATCH LINE