



POWER PAY OFFICE FIT UP

Winton Scott
Architects
5 Milk Street
Portland, Maine 04101

Wright Ryan
Construction, Inc.
10 Danforth Street
Portland, Maine 04101

Becker Structural
Engineers, Inc.
75 York Street
Portland, Maine 04101

Mechanical
Systems
Engineers
10 Royal River Center
Yarmouth, Maine 04096

Bartlett Design
942 Washington Ave.
Bath, Maine 04530

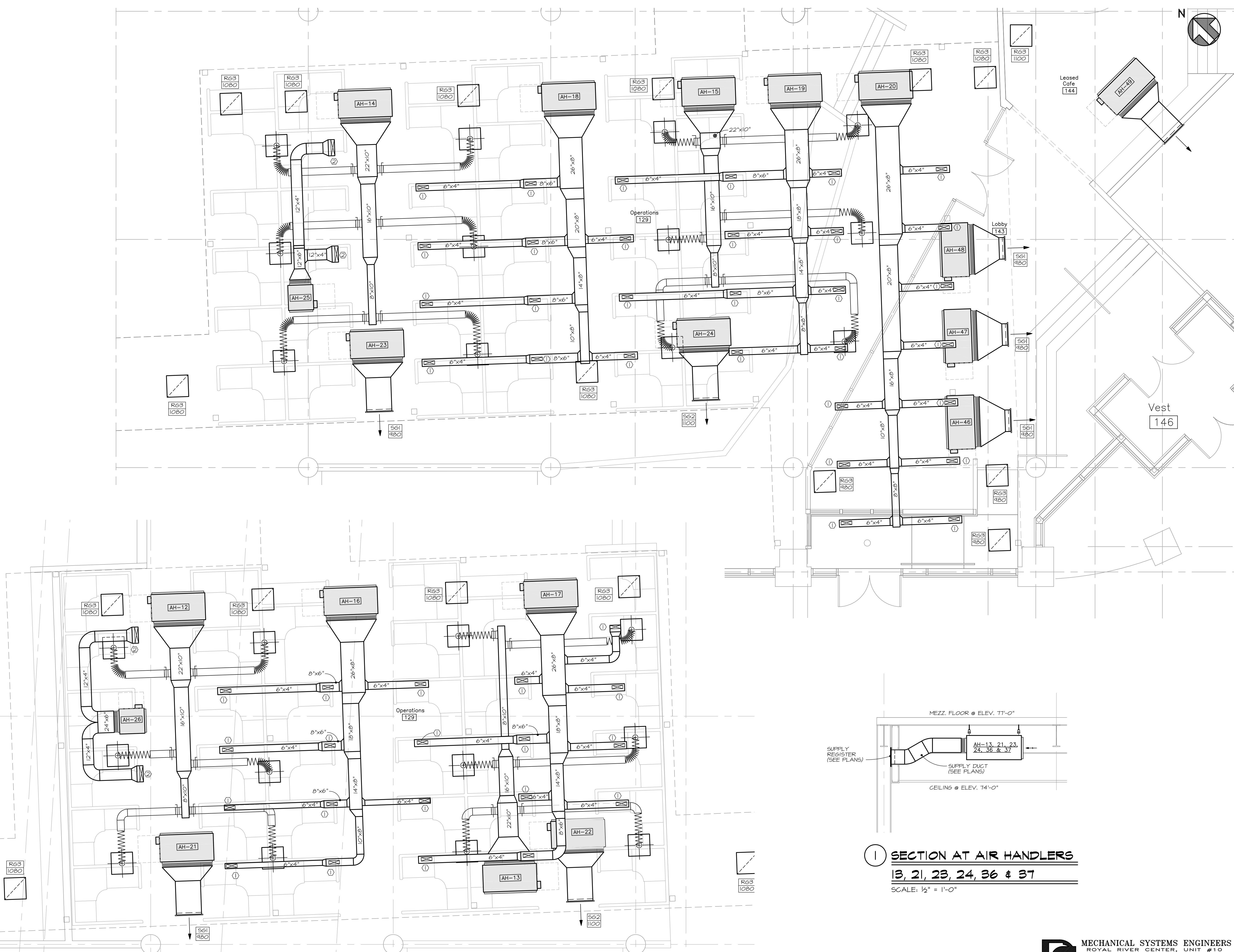
Fore Solutions
386 Fore Street
Portland, Maine 04101

ENLARGED FIRST
FL'R MECHANICAL
DUCTWORK PLANS

M6

MECHANICAL SYSTEMS ENGINEERS
ROYAL RIVER CENTER, UNIT #10
10 FOREST FALLS DRIVE
YARMOUTH, MAINE 04096
VOICE: (207) 846-1441
FAX: (207) 846-1443
mechsys@maine.me.com
© COPYRIGHT 2009

Scale: 1/4" = 1'-0" Date: 03.20.09
M.S.E. Proj. 0837



SECTION AT AIR HANDLERS
13, 21, 23, 24, 36 & 37
SCALE: 1/2" = 1'-0"



March 24, 2009 - 1:58 PM
\\Meerpa1\Projects\0837 Power Pay\Drawings\0837_M6-M6.dwg