



POWER PAY OFFICE FIT UP

Winton Scott
Architects
5 Milk Street
Portland, Maine 04101

Wright Ryan
Construction, Inc.
10 Danforth Street
Portland, Maine 04101

Becker Structural
Engineers, Inc.
75 York Street
Portland, Maine 04101

Mechanical
Systems
Engineers
10 Royal River Center
Yarmouth, Maine 04096

Bartlett Design
942 Washington Ave.
Bath, Maine 04530

Fore Solutions
386 Fore Street
Portland, Maine 04101

GENERAL
MECHANICAL
DETAILS

M15

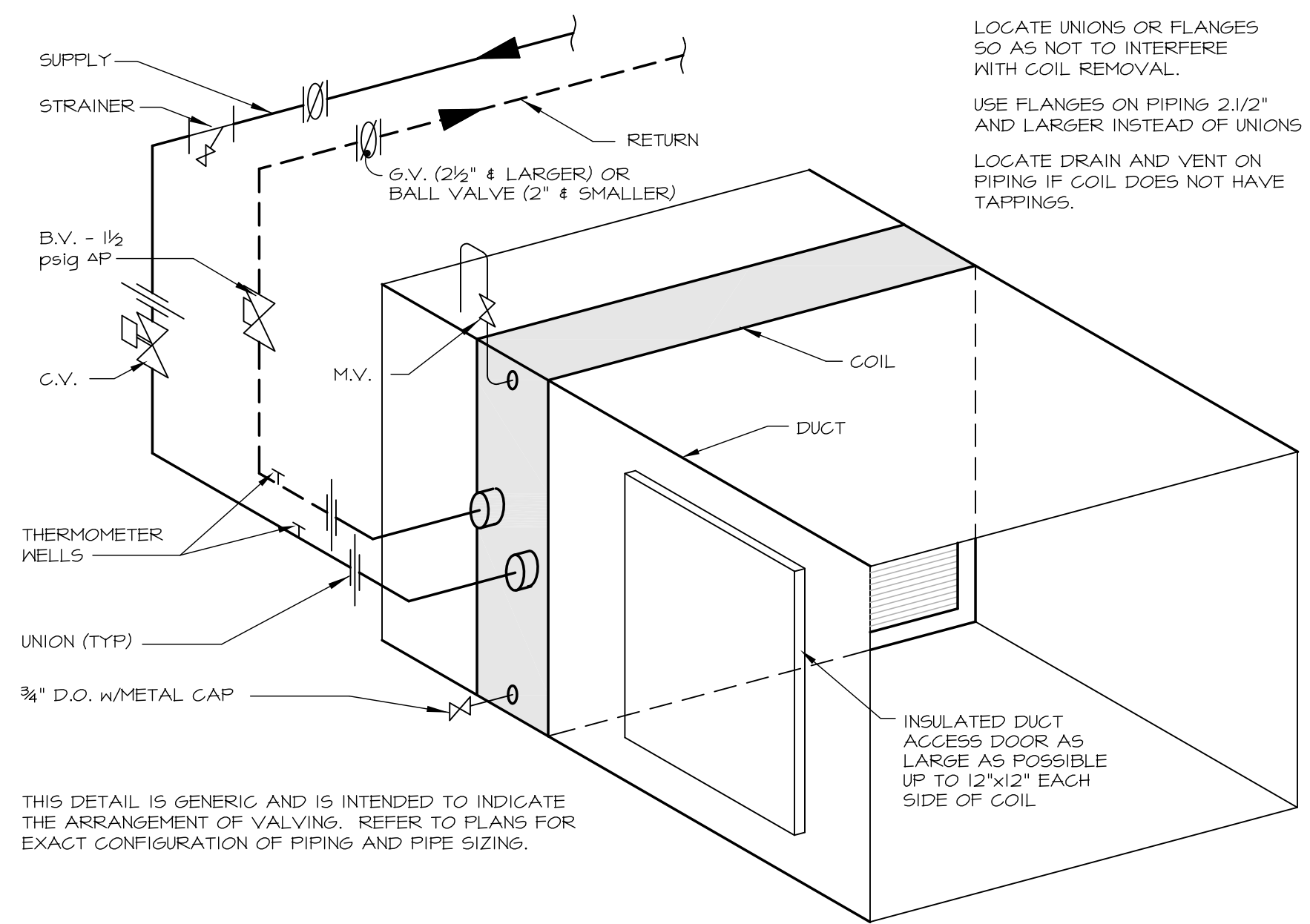
UNIT HEATER SCHEDULE

TAG	TYPE	AREA SERVED	E.W.T.	E.A.T.	MBH	GPM	W.P.D.	CFM	MOTOR HP	FAN RPM	ELECTRIC	REMARKS
UH-1	HORIZONTAL	142 KITCHEN	180	60	15.00	1.55	0.04'	591	1/20	1350	120V-60-1P	DOUBLE DEFLECTION LOUVER

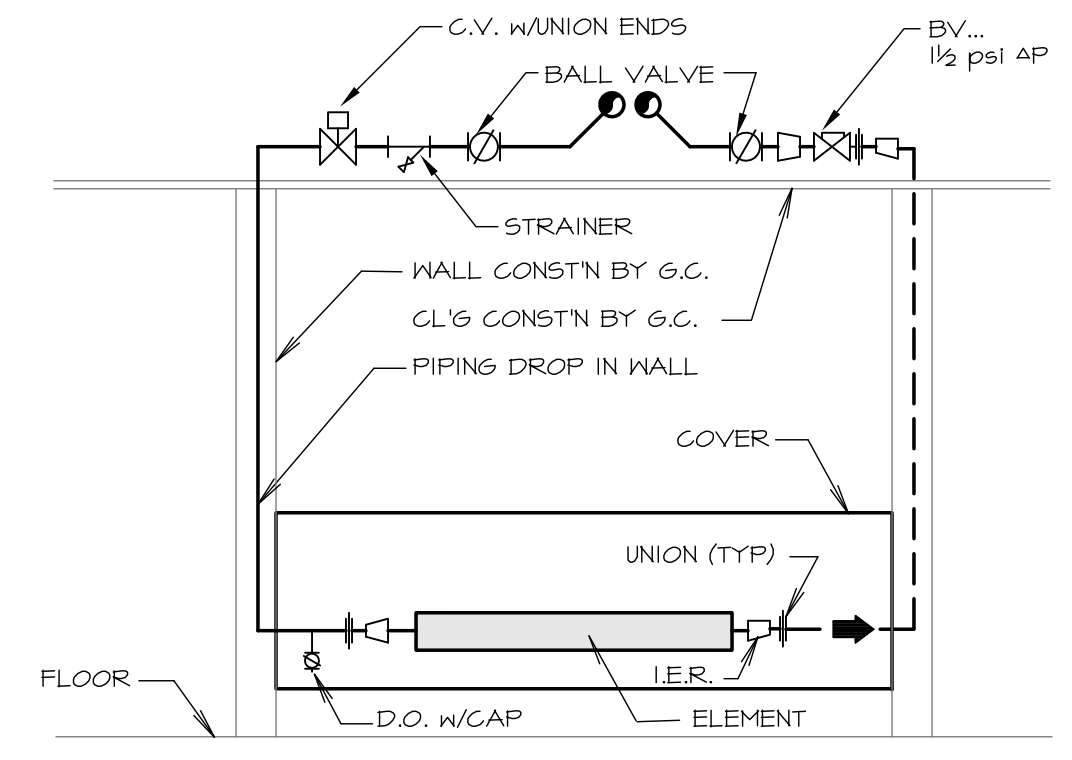
FINNED PIPE SCHEDULE

TAG	TYPE	ELEMENT	LENGTH	BTU/HR	GPM	REMARKS
FP-A	14" FLAT TOP COVER TOP OUTLET	3/4" COPPER, 3/14" SQ. ALUMINUM FINS, 50/LF	SEE PLANS	840 / LF	0.10 PER MBH	18" AFF TO TOP SINGLE TIER ELEMENT
FP-B	14" FLAT TOP COVER TOP OUTLET	3/4" COPPER, 4/14" x 3.5/8 ALUMINUM FINS, 50/LF	SEE PLANS	1,090 / LF	0.10 PER MBH	18" AFF TO TOP SINGLE TIER ELEMENT
FP-C	10" WIDE FLAT TOP COVER, TOP OUTLET	3/4" COPPER, 4/14" x 3.5/8 ALUMINUM FINS, 50/LF	SEE PLANS	1,430 / LF	0.10 PER MBH	DOUBLE WIDE PEDISTAL 10.3/4" AFF TO TOP
FP-D	11" SLOPE TOP COVER	3/4" COPPER, 3/14" SQ. ALUMINUM FINS, 50/LF	SEE PLANS	810 / LF	0.10 PER MBH	15" AFF TO TOP SINGLE TIER ELEMENT
FP-E	20" FLAT TOP COVER TOP OUTLET	3/4" COPPER, 4/14" x 3.5/8 ALUMINUM FINS, 50/LF	SEE PLANS	1,720 / LF	0.10 PER MBH	24" AFF TO TOP TWO TIER ELEMENT
EFP-1	14" FLAT TOP COVER TOP OUTLET	3/4" COPPER, 4/14" x 3.5/8 ALUMINUM FINS, 50/LF	EXISTING	EXISTING	EXISTING	SAME AS FP-B REPLACE COVER
EFP-2	10" WIDE FLAT TOP COVER, TOP OUTLET	3/4" COPPER, 4/14" x 3.5/8 ALUMINUM FINS, 50/LF	EXISTING	EXISTING	EXISTING	SAME AS FP-C REPLACE COVER

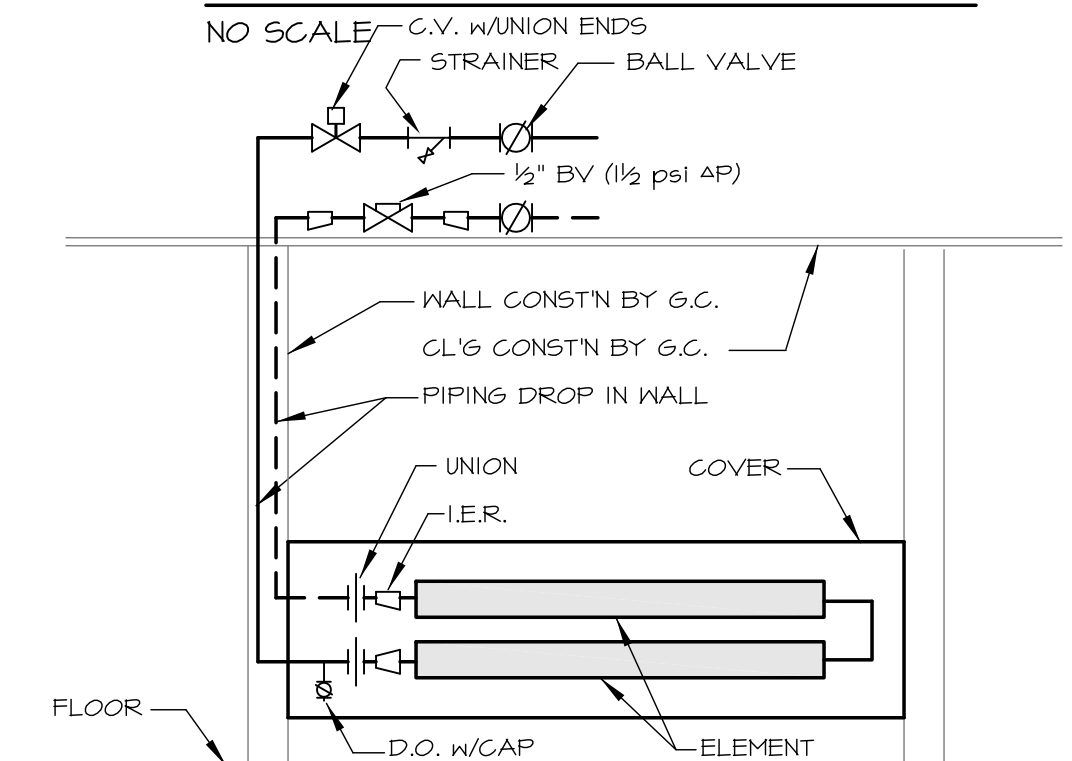
CAPACITIES BASED ON 180° EWT w/20° DROP (170 DEG. AWT)



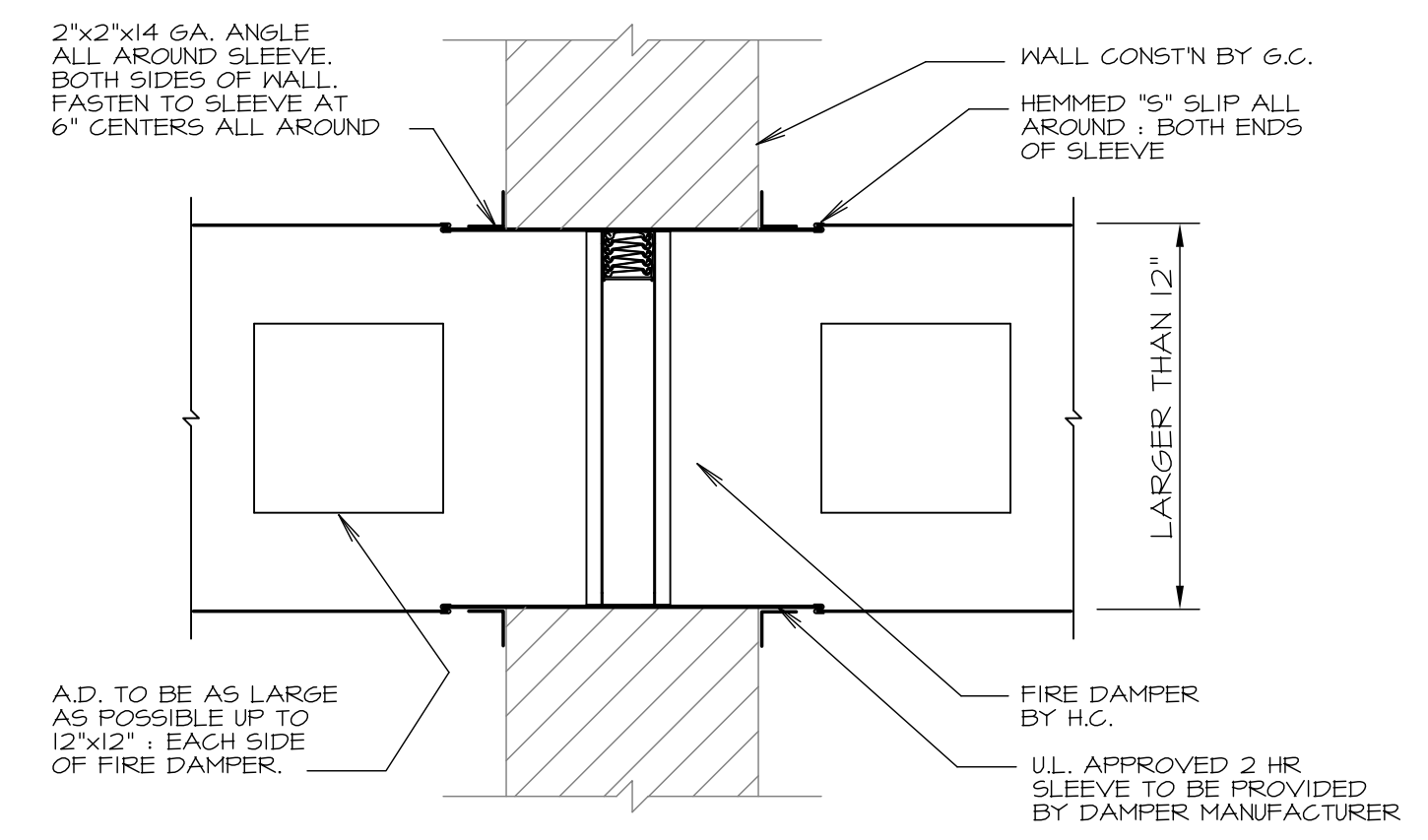
1 DUCT HOT WATER COIL DETAIL
NO SCALE



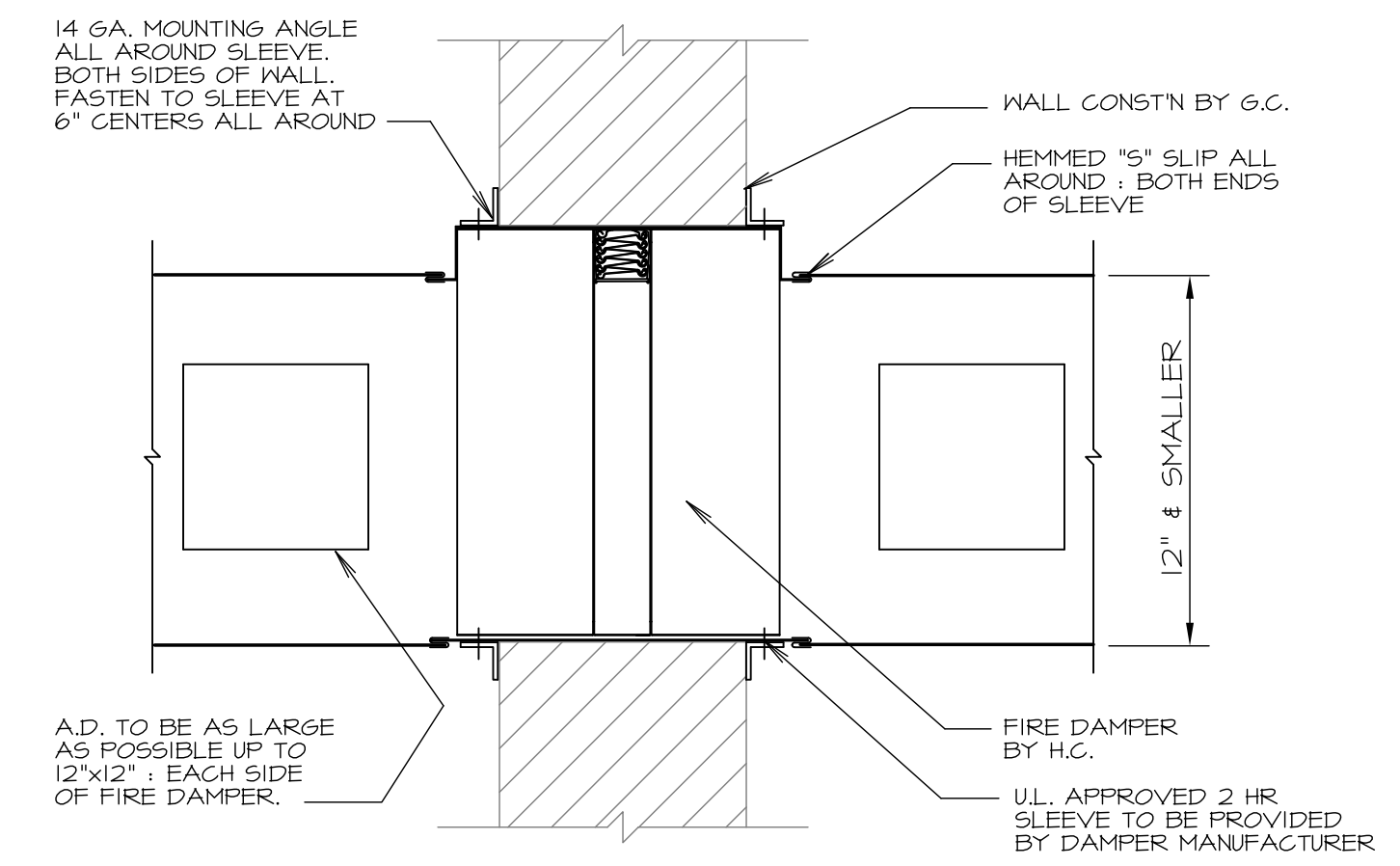
2 DOWNFEED FINNED PIPE OPPOSITE END FEED
NO SCALE



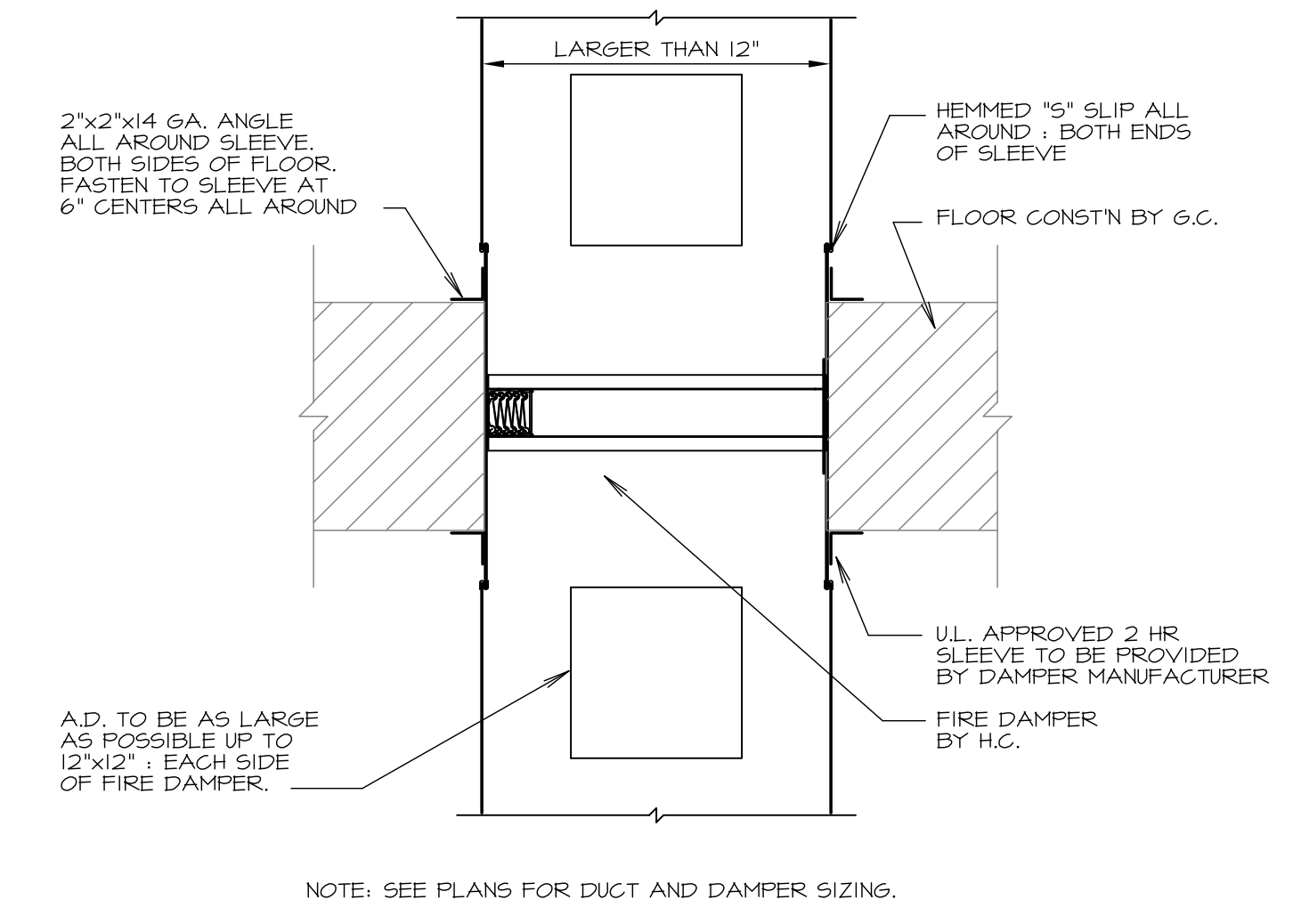
3 DOWNFEED FINNED PIPE TWO TIER ELEMENT
NO SCALE



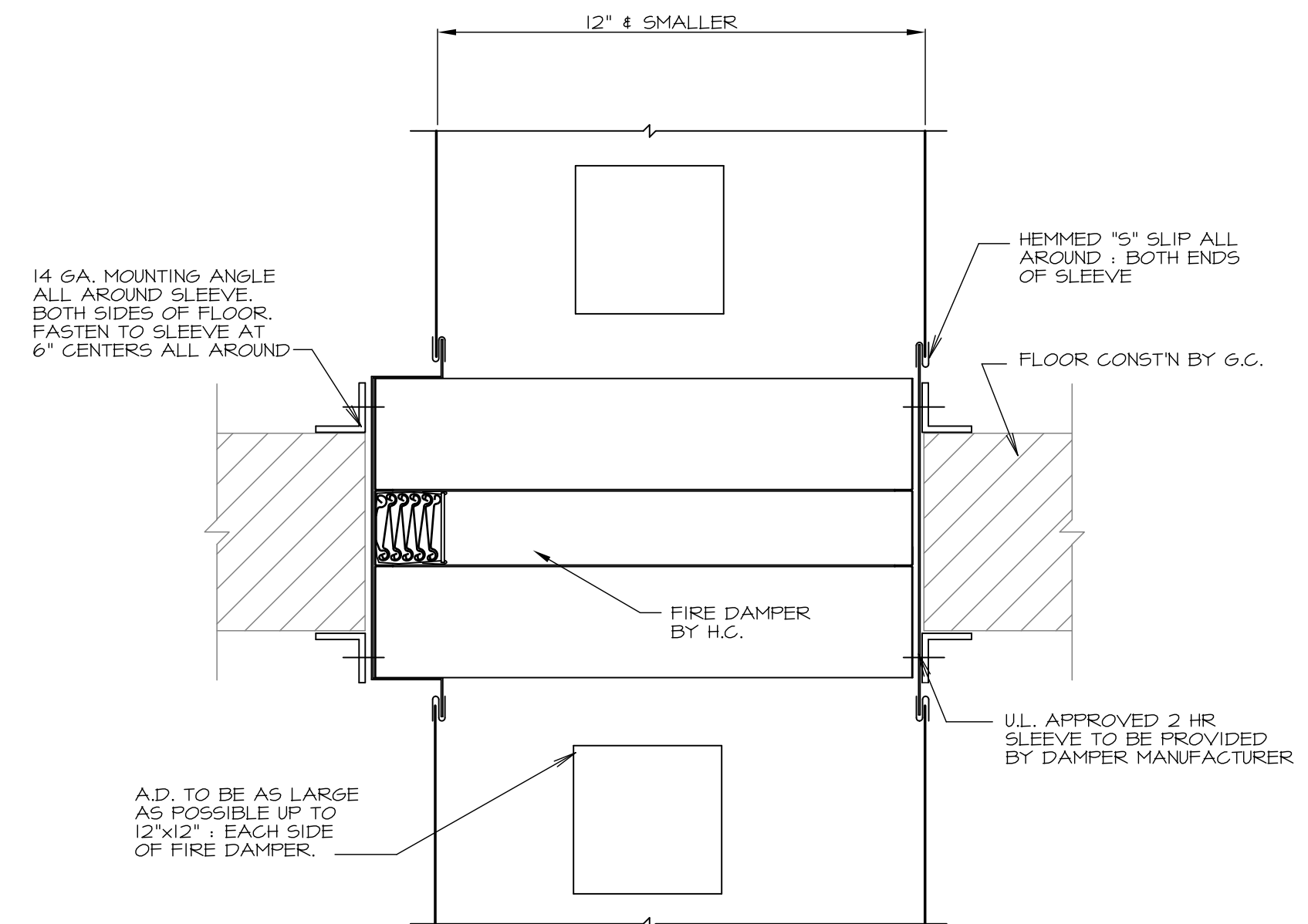
4 WALL FIRE DAMPER STYLE 'A'
NO SCALE



5 WALL FIRE DAMPER STYLE 'B'
NO SCALE



6 FLOOR FIRE DAMPER STYLE 'A'
NO SCALE



7 FLOOR FIRE DAMPER STYLE 'B'
NO SCALE