

POWER PAY OFFICE FIT UP

Winton Scott
Architects
5 Milk Street
Portland, Maine 04101

Wright Ryan
Construction, Inc.
10 Danforth Street
Portland, Maine 04101

Becker Structural
Engineers, Inc.
75 York Street
Portland, Maine 04101

Mechanical
Systems
Engineers
10 Royal River Center
Yarmouth, Maine 04096

Bartlett Design
942 Washington Ave.
Bath, Maine 04530

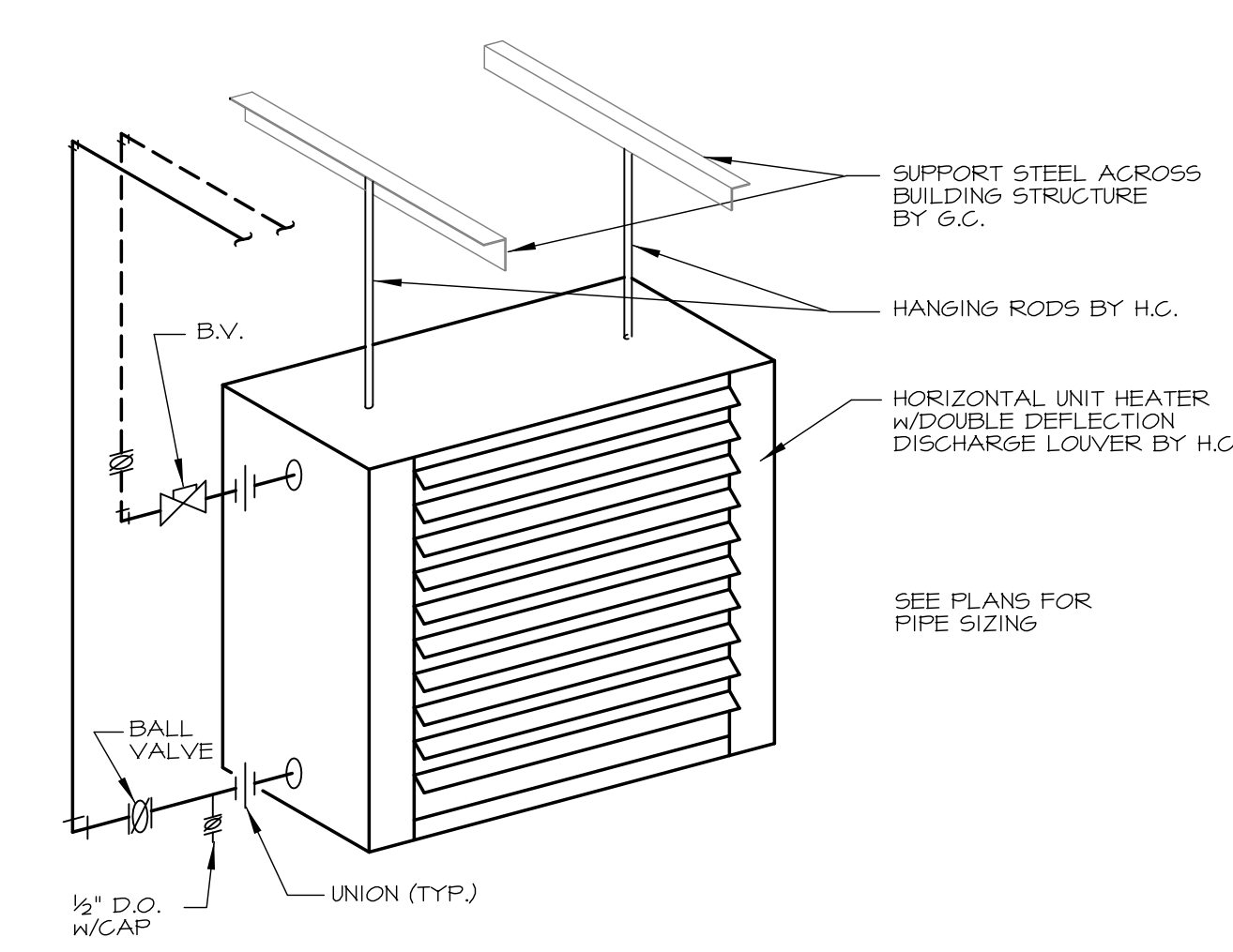
Fore Solutions
386 Fore Street
Portland, Maine 04101

FIRST FLOOR HEATING PIPING PLAN

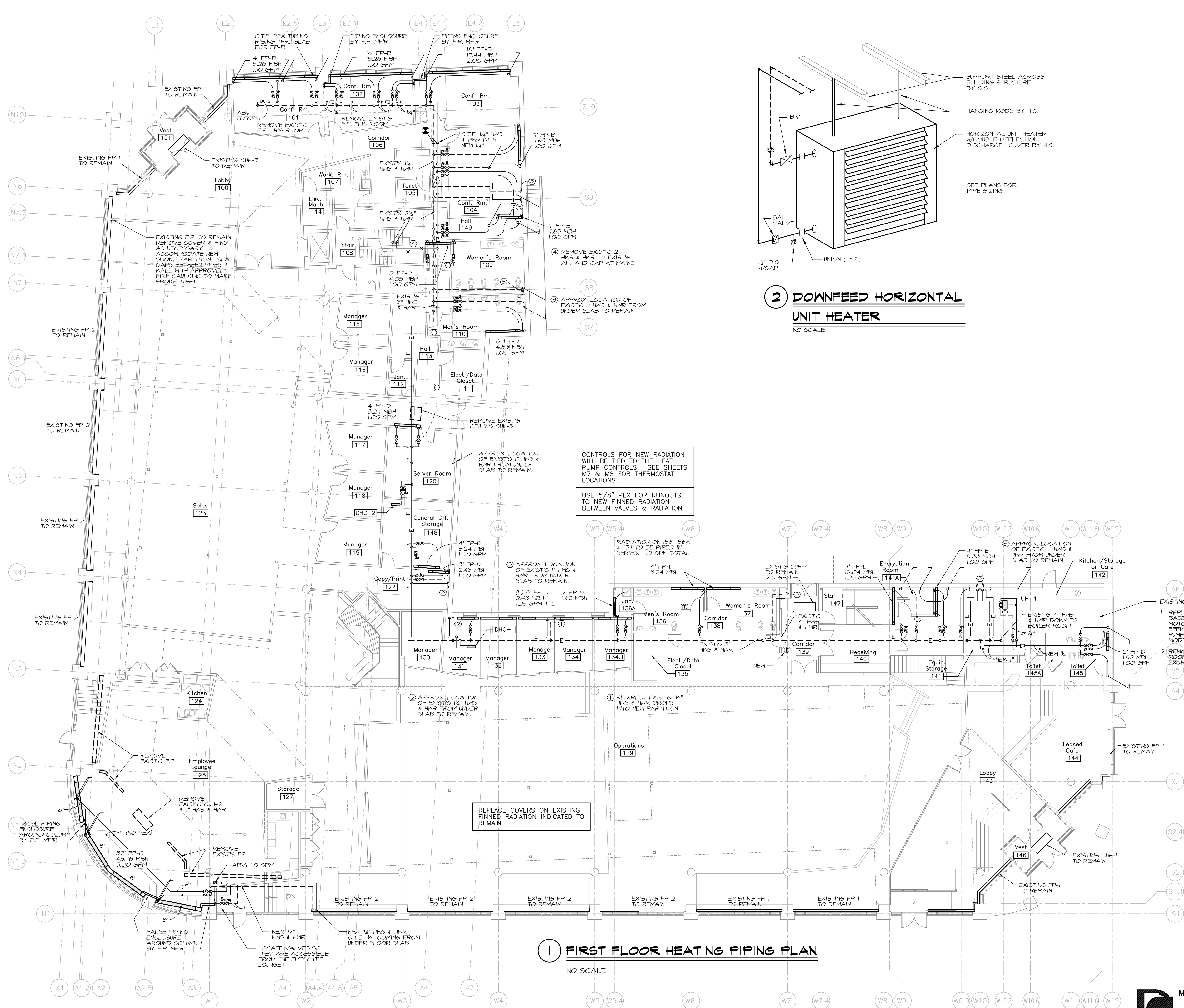
M11

MECHANICAL SYSTEMS ENGINEERS
ROYAL RIVER CENTER, UNIT #10
10 FOREST FALLS DRIVE
YARMOUTH, MAINE 04096
VOICE: (207) 846-1441
FAX: (207) 846-1443
mechsyst@maine.net
© COPYRIGHT 2009

Scale: 3/32" = 1'-0" Date: 03.20.09
M.S.E. Proj. 0837



**2 DOWNFEED HORIZONTAL
UNIT HEATER**
NO SCALE



CONTROLS FOR NEW RADIATION
WILL BE TIED TO THE HEAT
PUMP CONTROLS. SEE SHEETS
M7 & M8 FOR THERMOSTAT
LOCATIONS.
USE 5/8" PEX FOR RUNOUTS TO
NEW FINNED RADIATION
BETWEEN VALVES & RADIATION.

1 FIRST FLOOR HEATING PIPING PLAN
NO SCALE



March 25, 2009 - 7:43 am
\\Maine\Projects\0837 Power Pay\Drawings\0837 M11-M2.dwg