

POWERPAY OFFICE FIT UP

Winton Scott
Architects
5 Milk Street
Portland, ME 04101

Wright Ryan
Construction, Inc.
10 Danforth Street
Portland, ME 04101

Becker Structural
Engineers, Inc.
75 York Street
Portland, Maine 04101

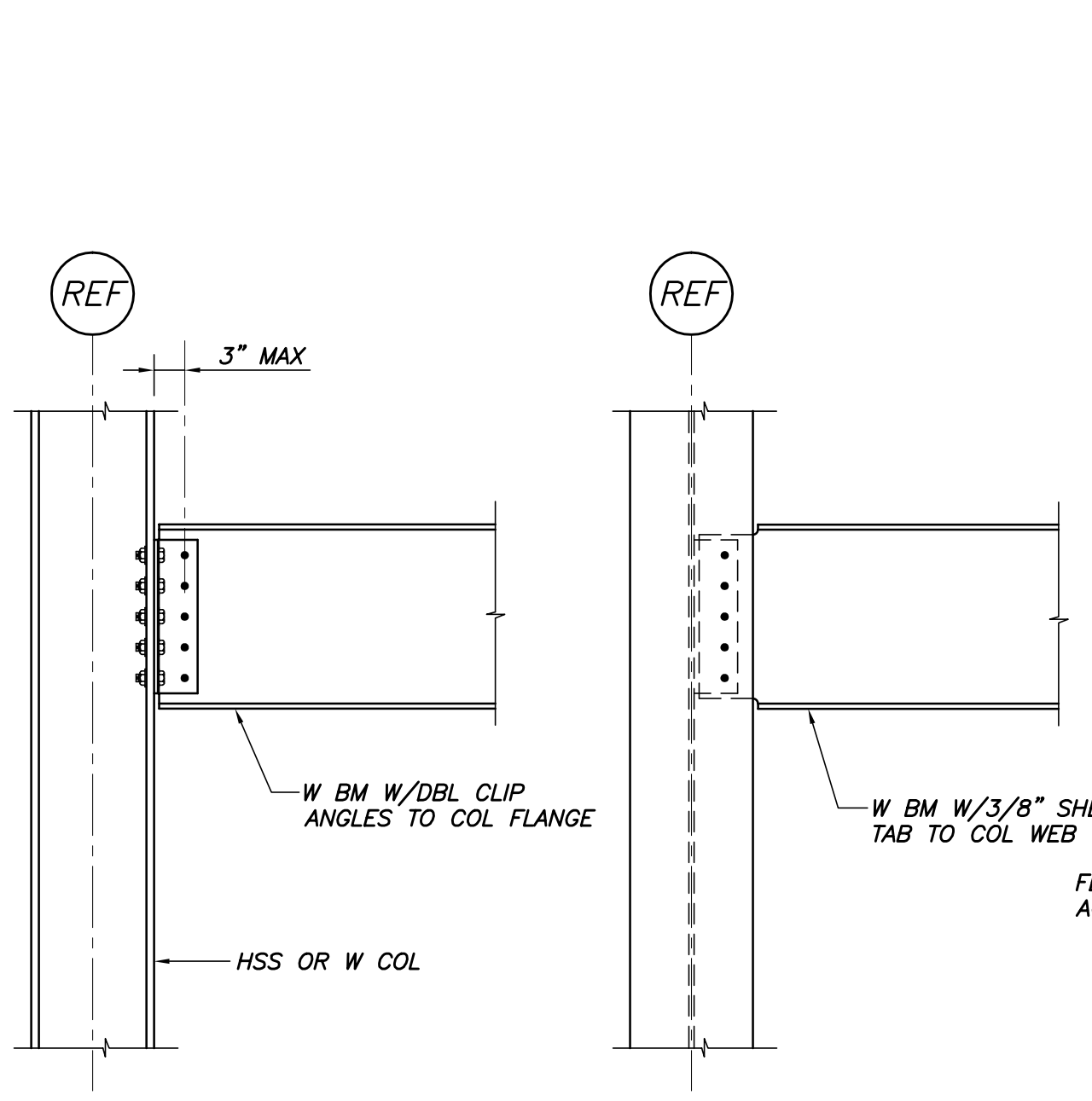
Mechanical
Systems
Engineers
10 Royal River Center
Yarmouth, Maine 04096

Bartlett Design
942 Washington Ave.
Bath, Maine 04530

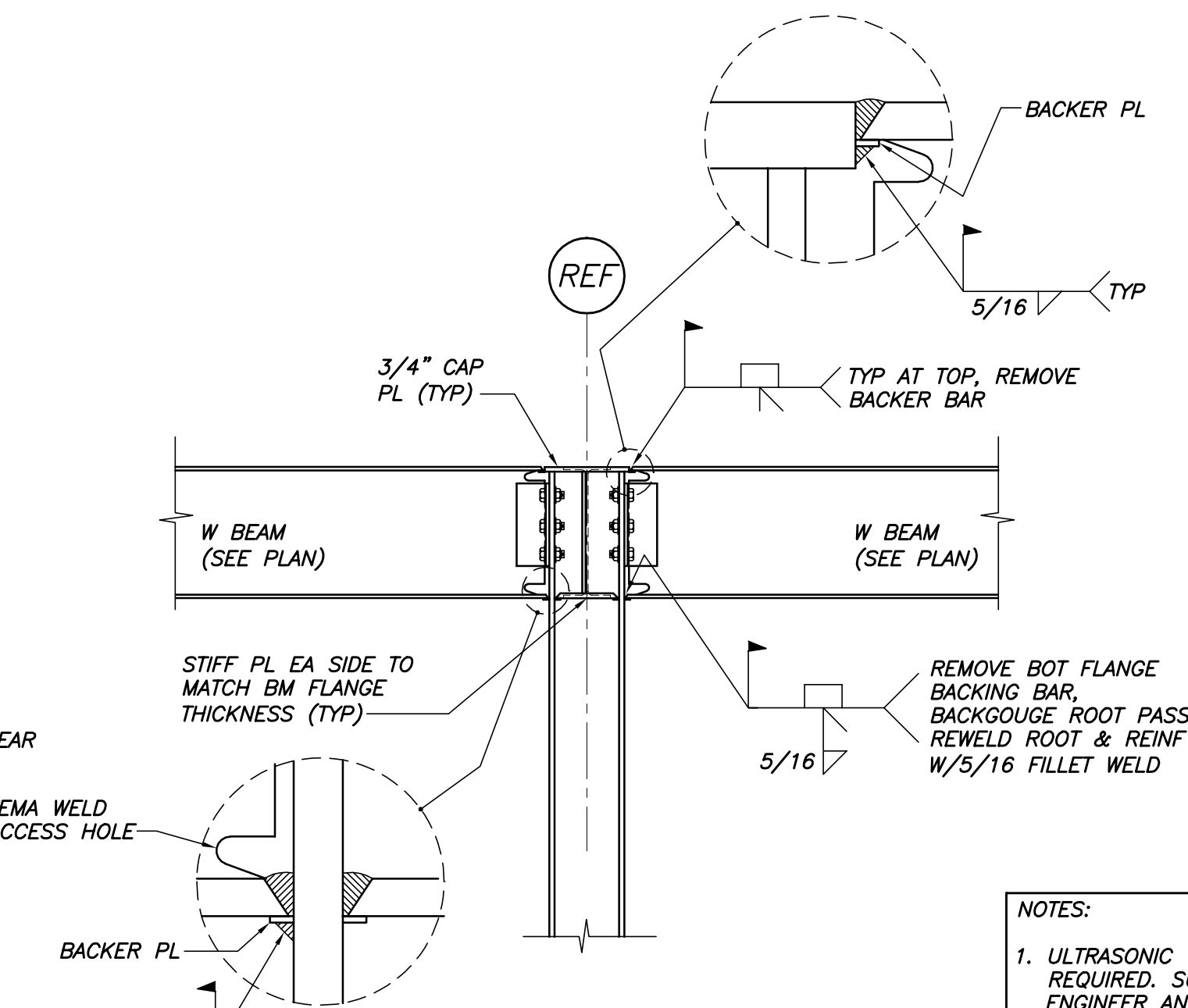
Fore Solutions
386 Fore Street
Portland, Maine 04101

TYPICAL FRAMING SECTIONS & DETAILS

S3.1

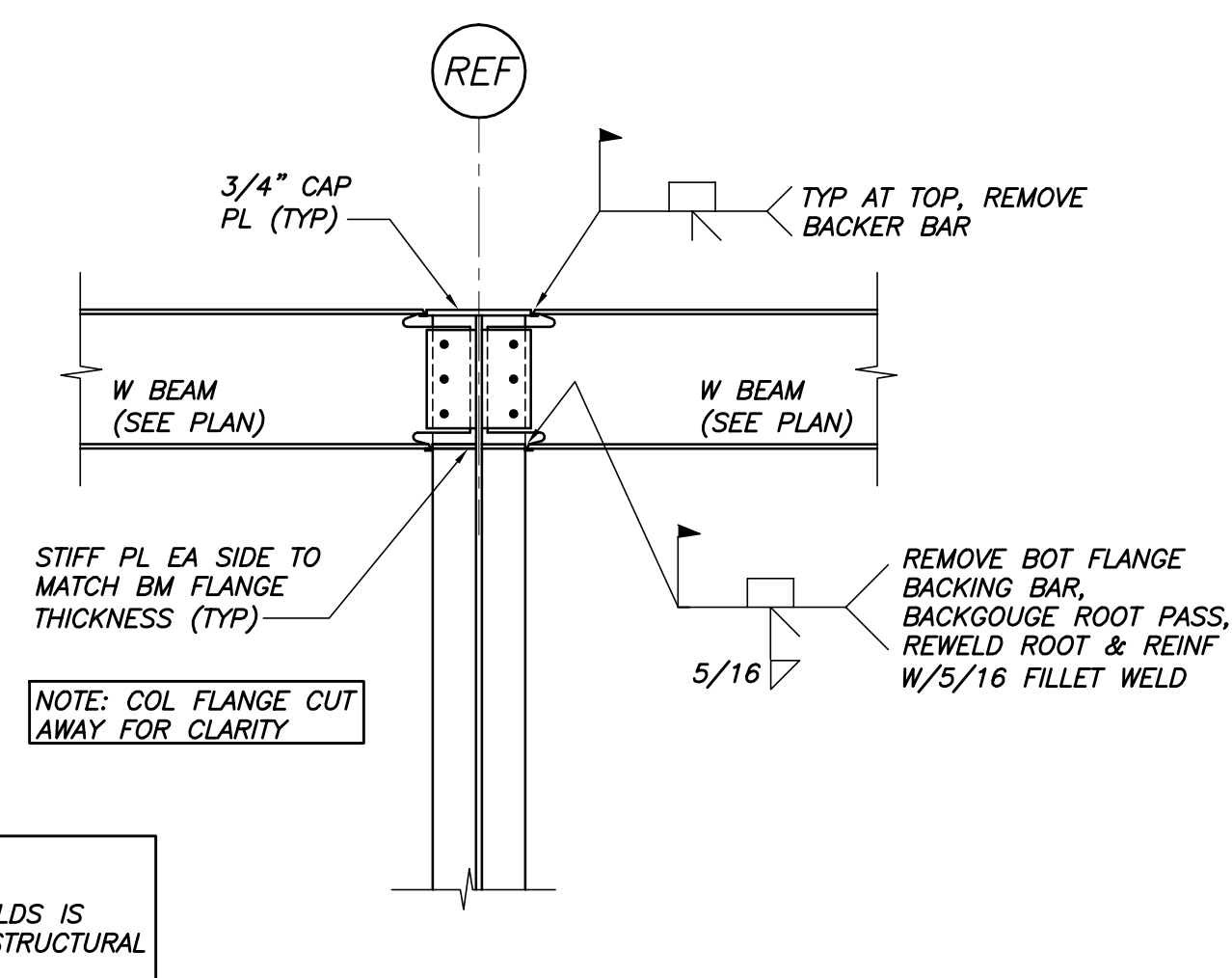


TYP BM/COL CONN DETAILS
N.T.S.

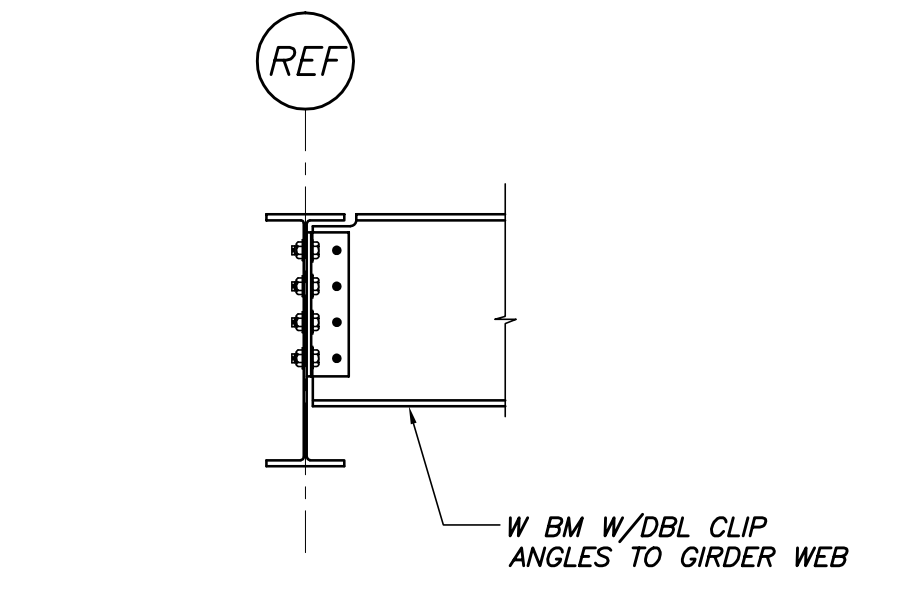


TYP BEAM/COL FLANGE
MOMENT CONN DETAIL
3/4"=1'-0"

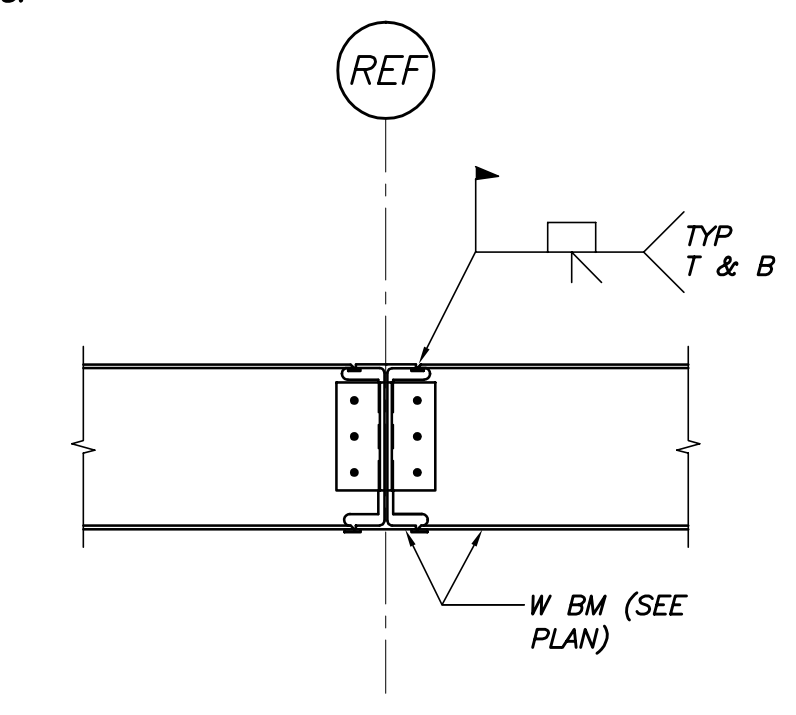
NOTES:
1. ULTRASONIC TESTING OF ALL WELDS IS REQUIRED. SUBMIT REPORT TO STRUCTURAL ENGINEER AND OWNER.
2. WELD METAL TO HAVE A MIN CHARPY V-NOTCH VALUE OF 20 ft-lb AT -20° F. & 40 ft-lb AT 70° F



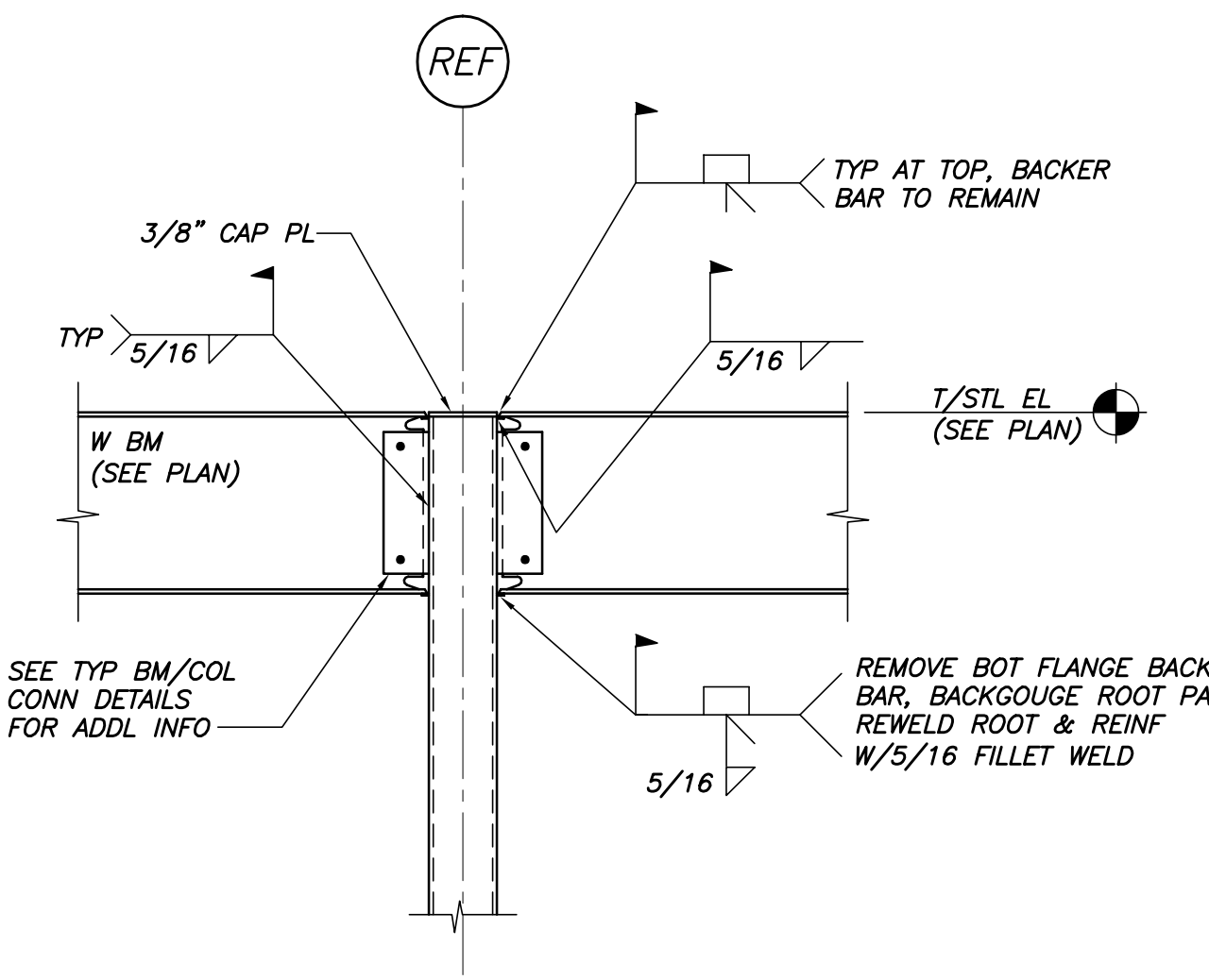
TYP BEAM/COL WEB
MOMENT CONN DETAIL
3/4"=1'-0"



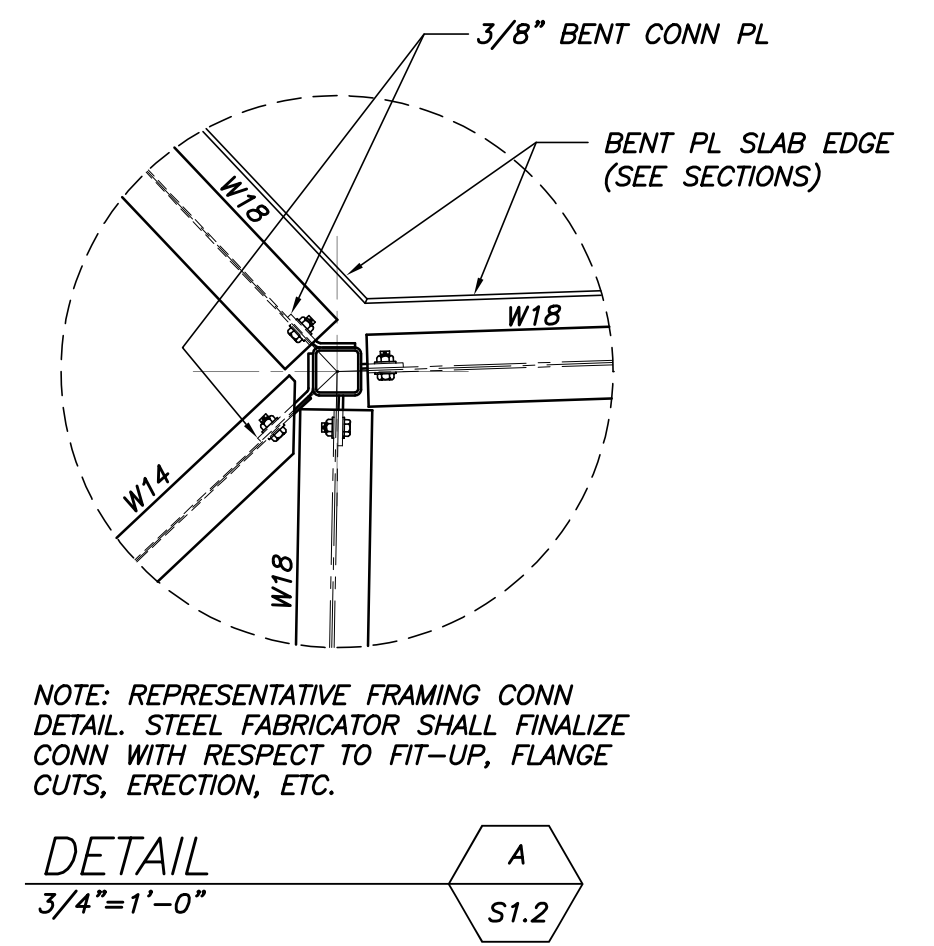
TYP BEAM/BEAM CONN
DETAIL
N.T.S.



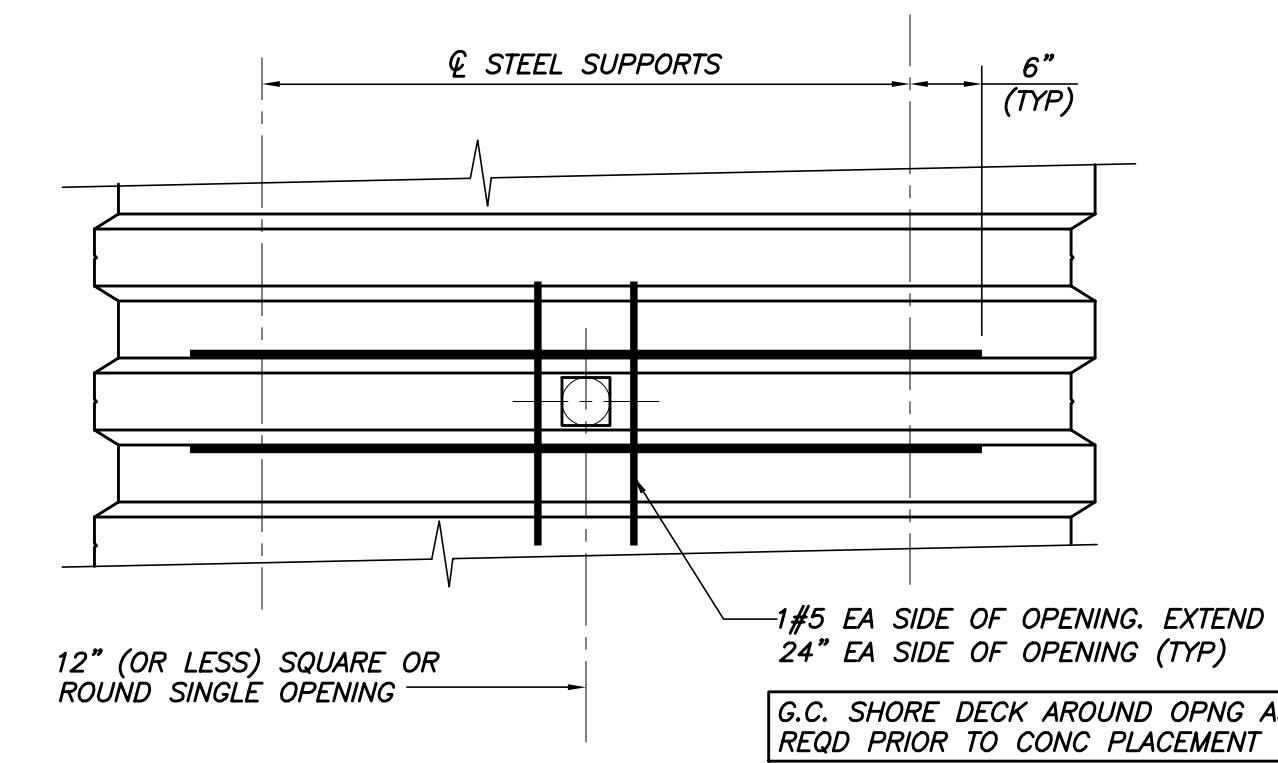
TYP BEAM/BEAM MOMENT
CONN DETAIL
N.T.S.



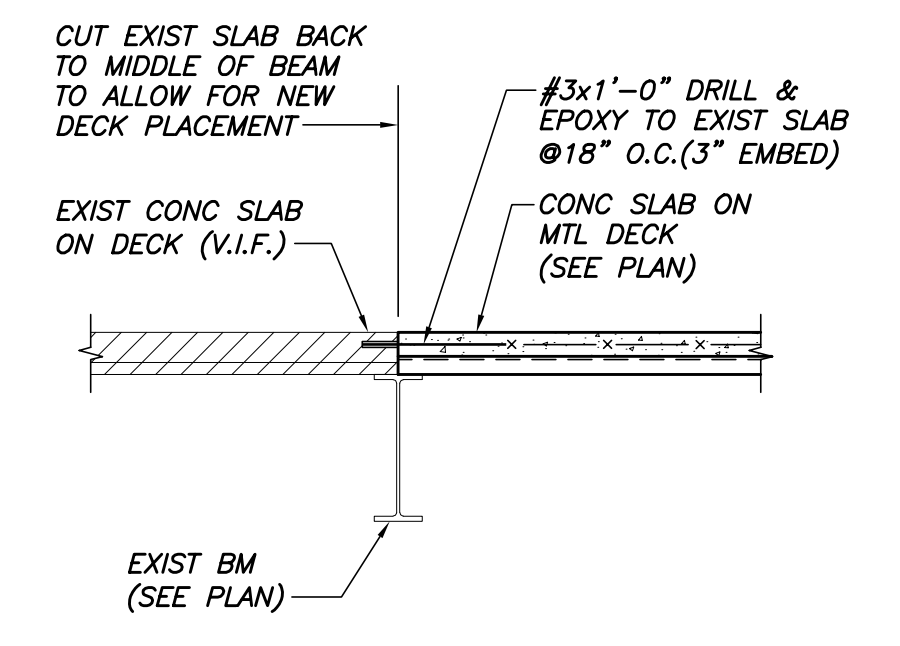
TYP HSS COL/BM MOMENT CONN DETAIL
N.T.S.



NOTE: REPRESENTATIVE FRAMING CONN DETAIL. STEEL FABRICATOR SHALL FINALIZE CONN WITH RESPECT TO FIT-UP, FLANGE CUTS, ERECTION, ETC.



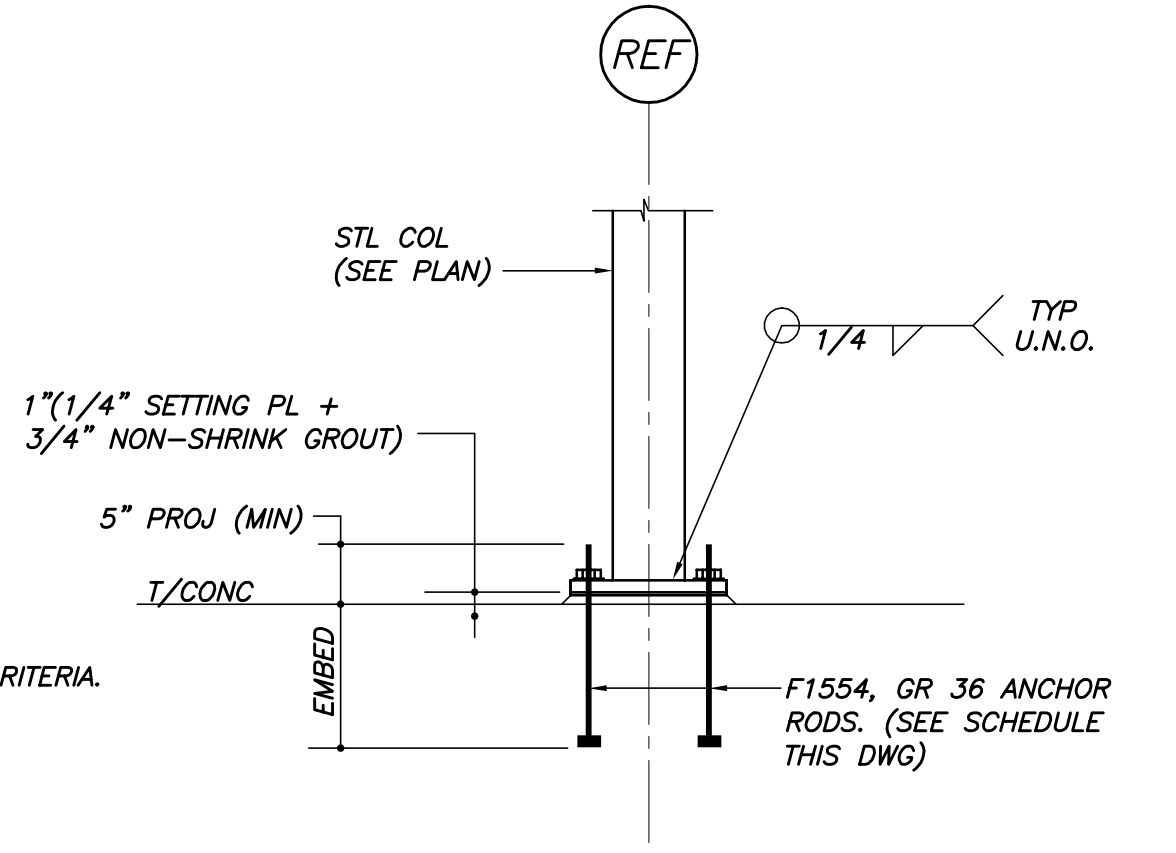
PLAN OF TYP OPENING IN
COMPOSITE FLOOR DECK
N.T.S.



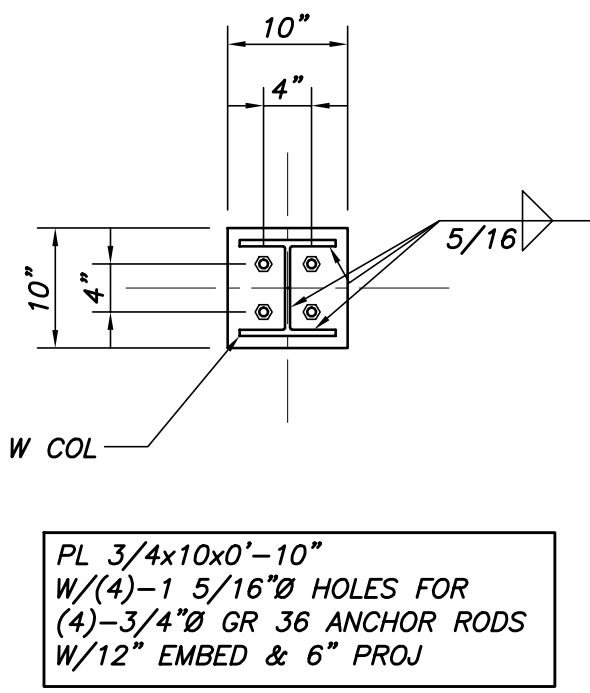
TYP NEW/EX SLAB JOINT DETAIL
N.T.S.

SIMPLE SHEAR BEAM CONN. SCHEDULE			
BEAM SIZE	DESIGN REACTION	MINIMUM NO BOLTS 1 SIDED CONNECTION	MINIMUM NO BOLTS 2 SIDED CONNECTION
WB-W10	12k	2	2
W12	20k	3	2
W14	25k	3	2
W16	30k	4	3
W18	40k	5	3

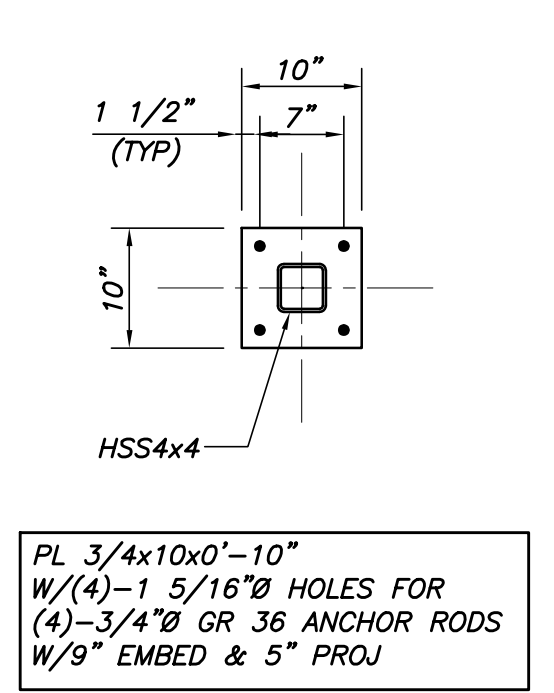
- SIMPLE SHEAR CONNECTIONS NOTES:
- SIMPLE SHEAR CONNECTIONS SHALL BE SELECTED FROM THE AISC "MANUAL OF STEEL CONSTRUCTION, THIRTEENTH EDITION" USING THE ABOVE REFERENCED REACTIONS AND CRITERIA. REACTIONS INDICATED ARE UNFACTORED (SERVICE LEVEL LOADS). MORE BOLTS THAN REFERENCED IN THE "MINIMUM" SECTIONS ABOVE MAY BE REQUIRED FOR LOAD REQUIREMENTS.
 - CONNECTIONS ARE SUBJECT TO REVIEW ON THE STEEL SHOP DRAWINGS.
 - ALL BOLTS SHALL BE A325 OR A490 FOR SIMPLE SHEAR CONNECTIONS, MIN 3/4" Ø. MINIMUM WELD SIZE SHALL BE 5/16". MINIMUM MATERIAL SIZE FOR PLATES OR ANGLES SHALL BE 3/8".
 - ONE SIDED CONNECTIONS INCLUDE SINGLE PLATES AND SINGLE ANGLE CONNECTIONS.
 - TWO SIDED CONNECTIONS INCLUDE DOUBLE ANGLE AND END PLATE CONNECTIONS.



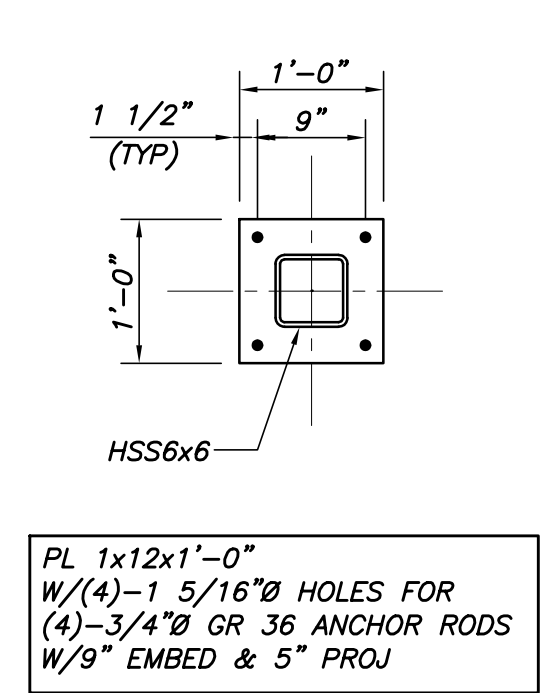
TYP COL BASE DETAIL U.N.O.
N.T.S.



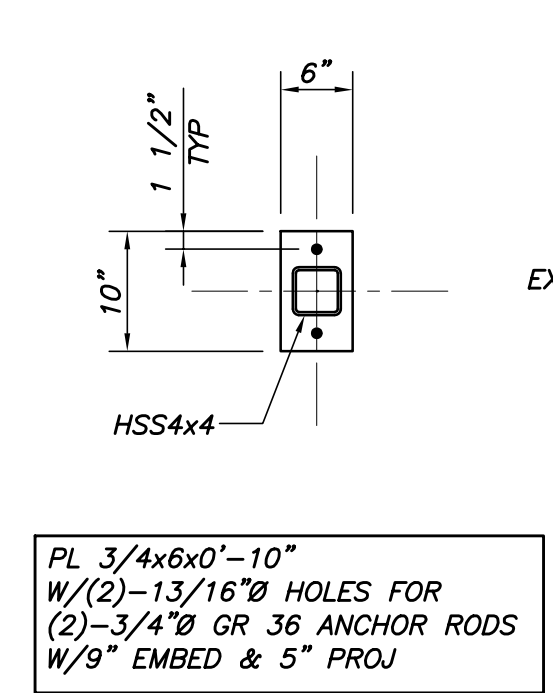
BP-1



BP-2



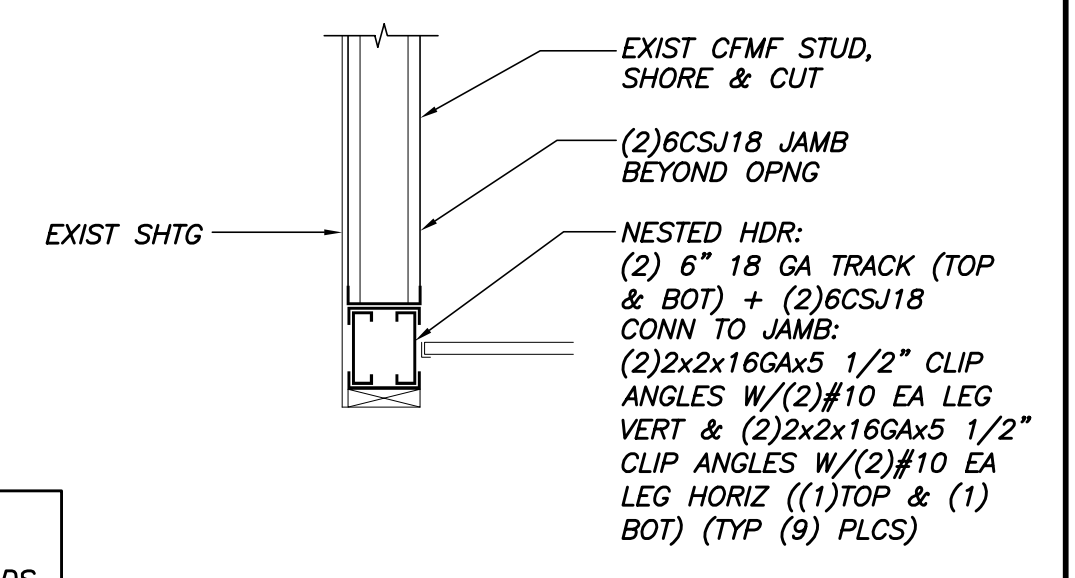
BP-3



BP-4

TYP BASE PLATE DETAILS
N.T.S.

NOTE: WHERE BP BEARS ON EXIST FDN, USE 3/4" Ø x 8" LONG HILTI RE 500 ADHESIVE ANCHORS



TYP FRAMING @ NEW
WINDOW OPNG DETAIL
N.T.S.