

# POWERPAY OFFICE FIT UP

Winton Scott  
Architects  
5 Milk Street  
Portland, ME 04101

Wright Ryan  
Construction, Inc.  
10 Danforth Street  
Portland, ME 04101

Becker Structural  
Engineers, Inc.  
75 York Street  
Portland, Maine 04101

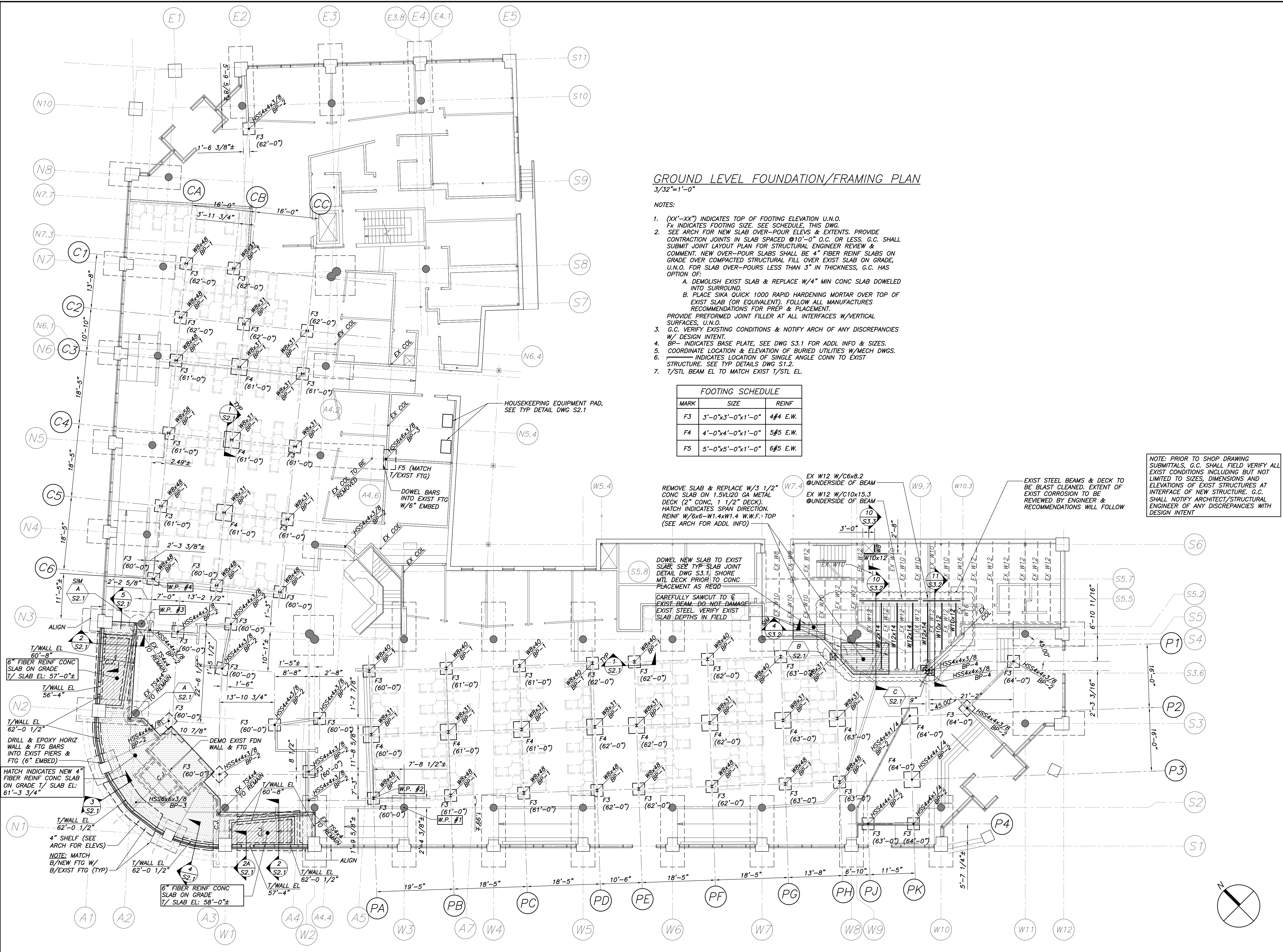
Mechanical  
Systems  
Engineers  
10 Royal River Center  
Yarmouth, Maine 04096

Bartlett Design  
942 Washington Ave.  
Bath, Maine 04530

Fore Solutions  
386 Fore Street  
Portland, Maine 04101

## GROUND LEVEL FLOOR PLAN

### S1.1



### GROUND LEVEL FOUNDATION/FRAMING PLAN 3/32"=1'-0"

- NOTES:
- (XX'-XX") INDICATES TOP OF FOOTING ELEVATION U.N.O.  
F<sub>x</sub> INDICATES FOOTING SIZE. SEE SCHEDULE, THIS DWG.  
SEE ARCH FOR NEW SLAB OVER-POUR ELEVATIONS & EXTENTS. PROVIDE CONTRACTION JOINTS IN SLAB SPACED @10'-0" O.C. OR LESS. G.C. SHALL SUBMIT JOINT LAYOUT PLAN FOR STRUCTURAL ENGINEER REVIEW & COMMENT. NEW OVER-POUR SLABS SHALL BE 4" FIBER REINFC SLABS ON GRADE OVER COMPACTED STRUCTURAL FILL OVER EXIST SLAB ON GRADE, U.N.O. FOR SLAB OVER-POURS LESS THAN 3" IN THICKNESS, G.C. HAS OPTION OF:  
A. DEMOLISH EXIST SLAB & REPLACE W/4" MIN CONC SLAB DOWELED INTO SURROUND.  
B. PLACE SIKI QUICK 1000 RAPID HARDENING MORTAR OVER TOP OF EXIST SLAB (OR EQUIVALENT). FOLLOW ALL MANUFACTURERS RECOMMENDATIONS FOR PREP & PLACEMENT.  
PROVIDE PREFORMED JOINT FILLER AT ALL INTERFACES W/VERTICAL SURFACES, U.N.O.
  - G.C. VERIFY EXISTING CONDITIONS & NOTIFY ARCH OF ANY DISCREPANCIES W/ DESIGN INTENT.
  - BP- INDICATES BASE PLATE. SEE DWG S3.1 FOR ADDL INFO & SIZES.
  - COORDINATE LOCATION & ELEVATION OF BURIED UTILITIES W/MECH DWGS.
  - T/STL BEAM EL TO MATCH EXIST T/STL EL.

MARK	SIZE	REINF
F3	3'-0"x3'-0"x1'-0"	4#4 E.W.
F4	4'-0"x4'-0"x1'-0"	5#5 E.W.
F5	5'-0"x5'-0"x1'-0"	6#5 E.W.

NOTE: PRIOR TO SHOP DRAWING SUBMITTALS, G.C. SHALL FIELD VERIFY ALL EXIST CONDITIONS INCLUDING BUT NOT LIMITED TO SIZES, DIMENSIONS AND ELEVATIONS OF EXIST STRUCTURES AT INTERFACE OF NEW STRUCTURE. G.C. SHALL NOTIFY ARCHITECT/STRUCTURAL ENGINEER OF ANY DISCREPANCIES WITH DESIGN INTENT