

**POWERPAY
OFFICE FIT UP**

Winton Scott
Architects
5 Milk Street
Portland, ME 04101

Wright Ryan
Construction, Inc.
10 Danforth Street
Portland, ME 04101

Becker Structural
Engineers, Inc.
75 York Street
Portland, Maine 04101

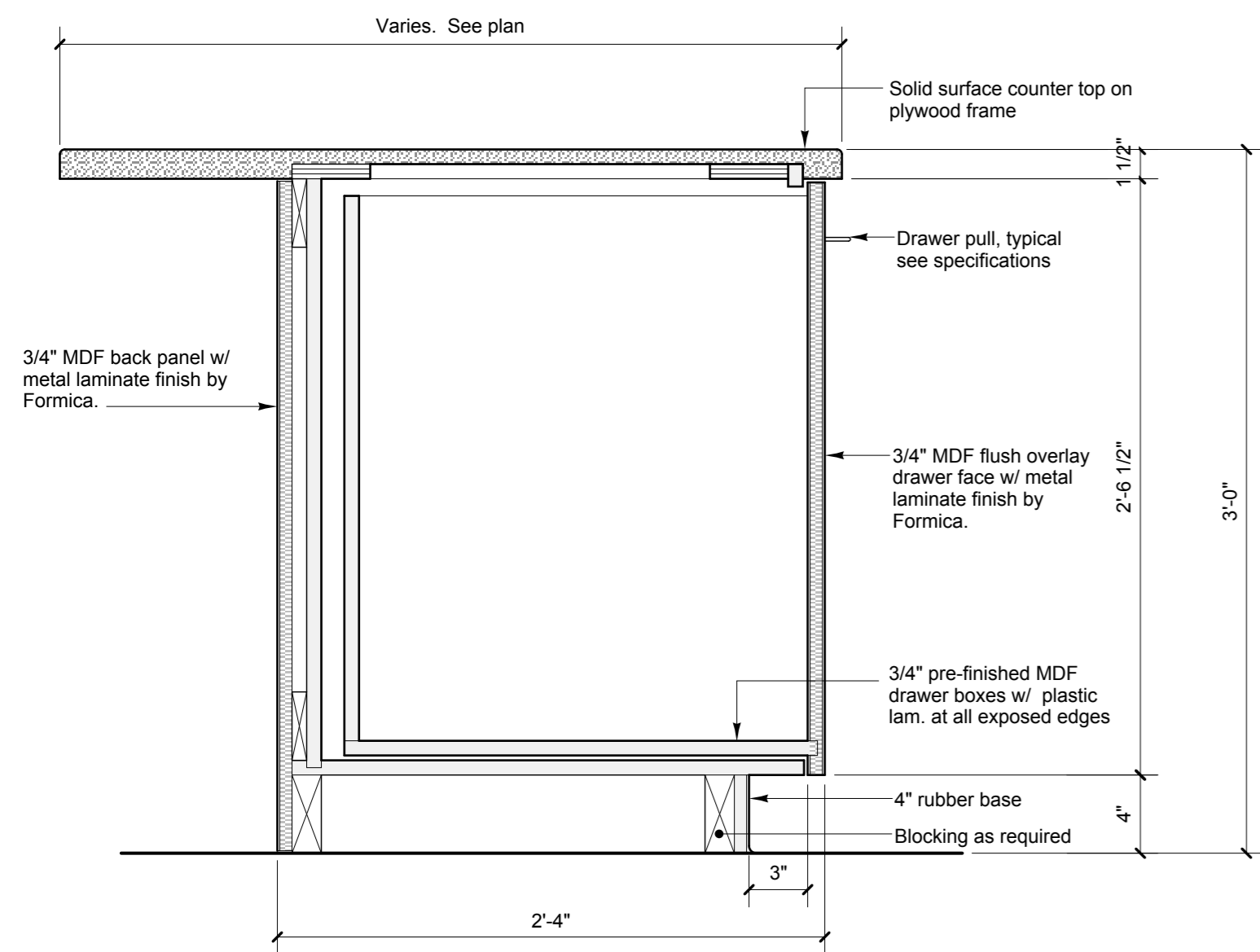
Mechanical
Systems
Engineers
10 Royal River Center
Yarmouth, Maine 04096

Bartlett Design
942 Washington Ave.
Bath, Maine 04530

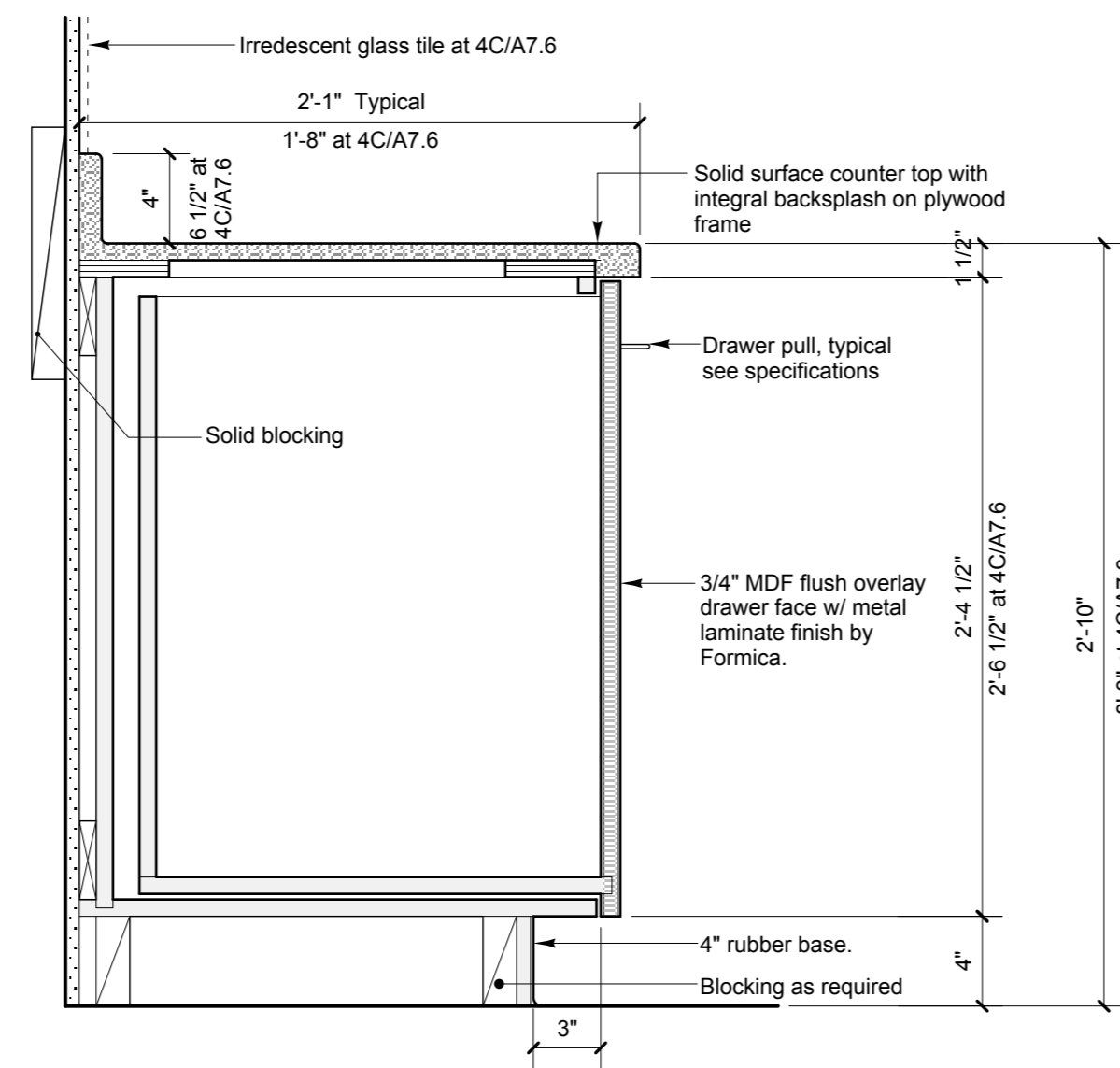
Fore Solutions
386 Fore Street
Portland, Maine 04101

MILLWORK DETAILS

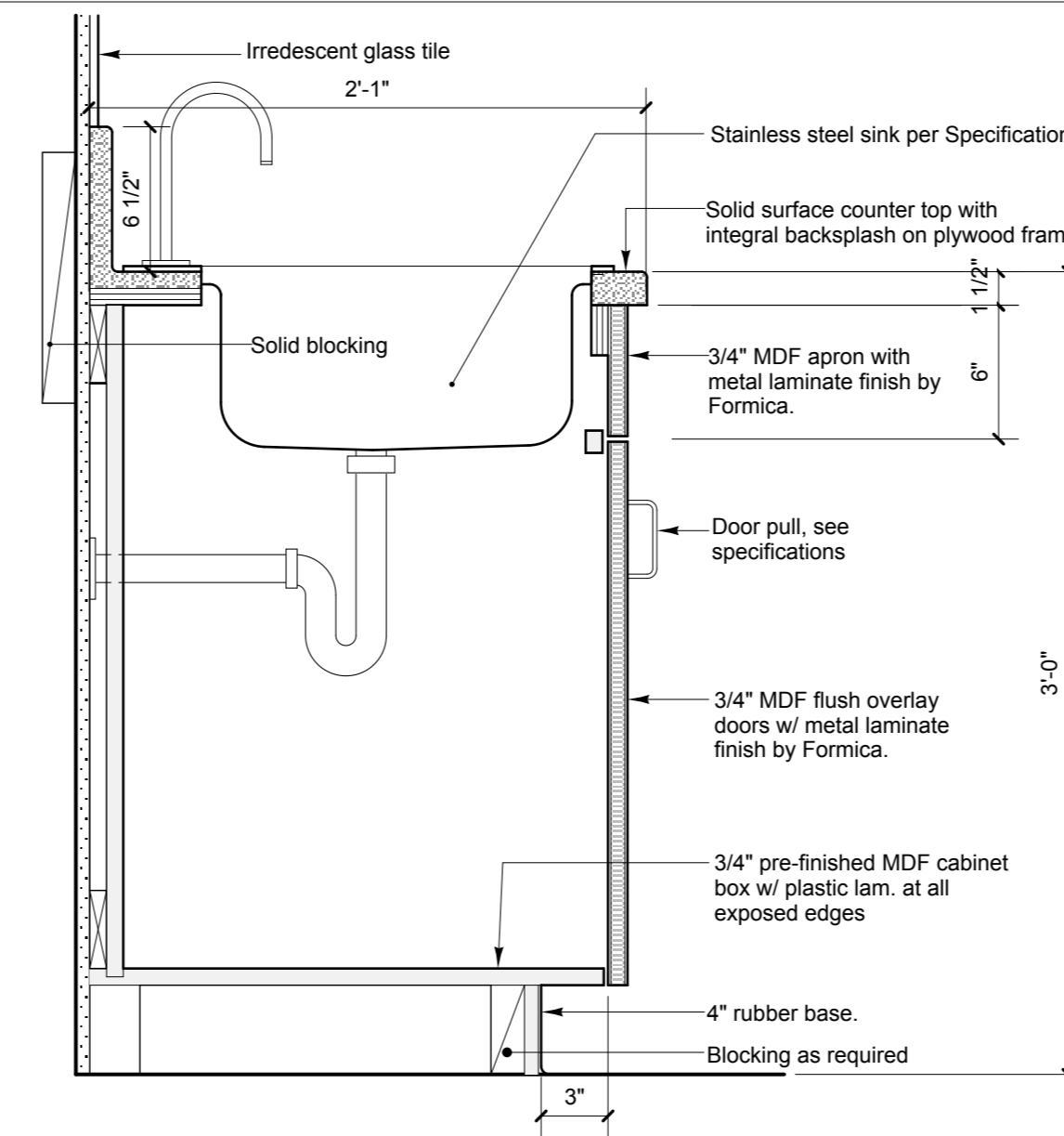
A7.8



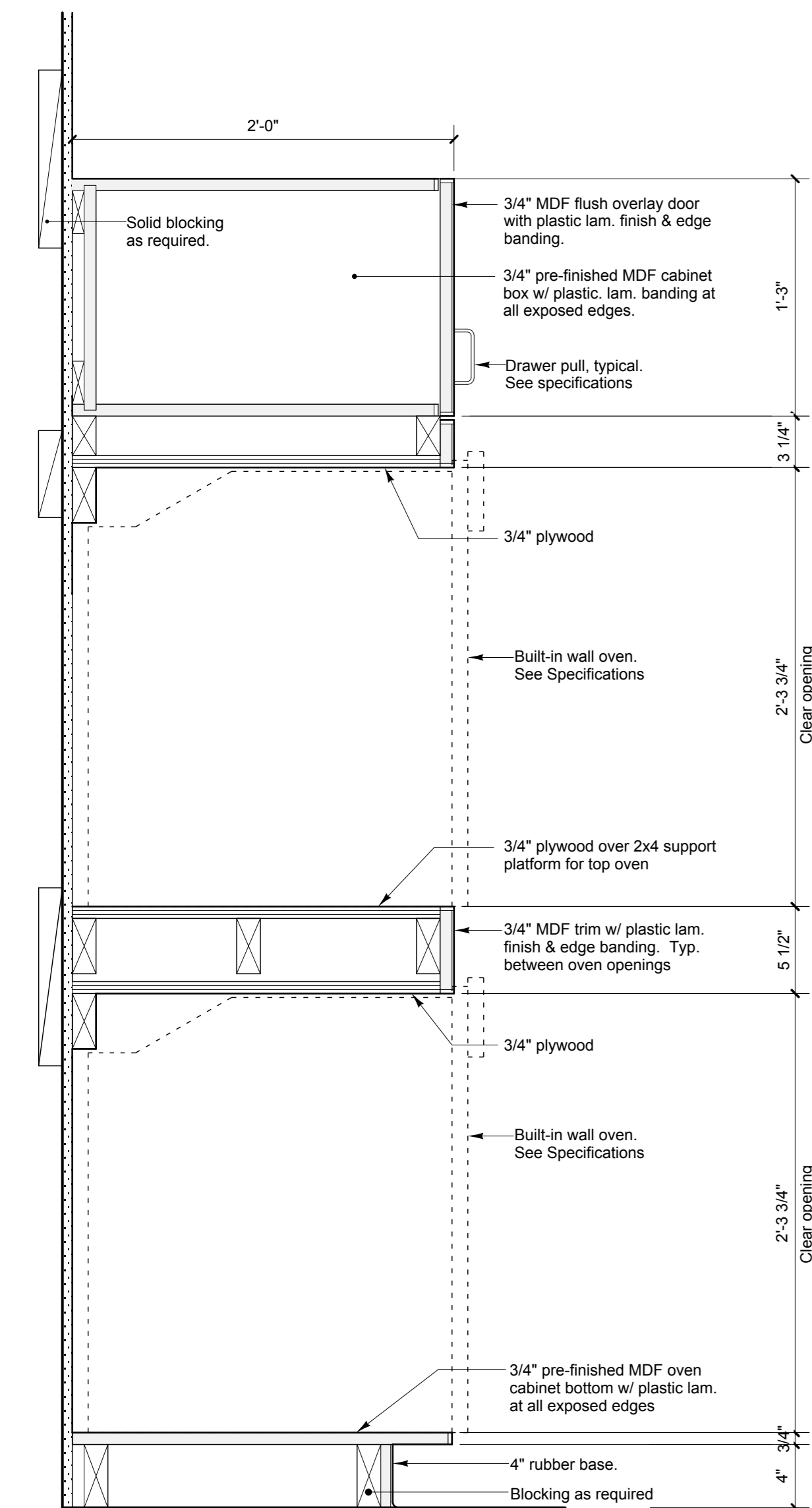
10 SECTION DETAIL AT KITCHEN ISLAND PULL-OUT CABINET
SCALE: 1 1/2" = 1'-0"



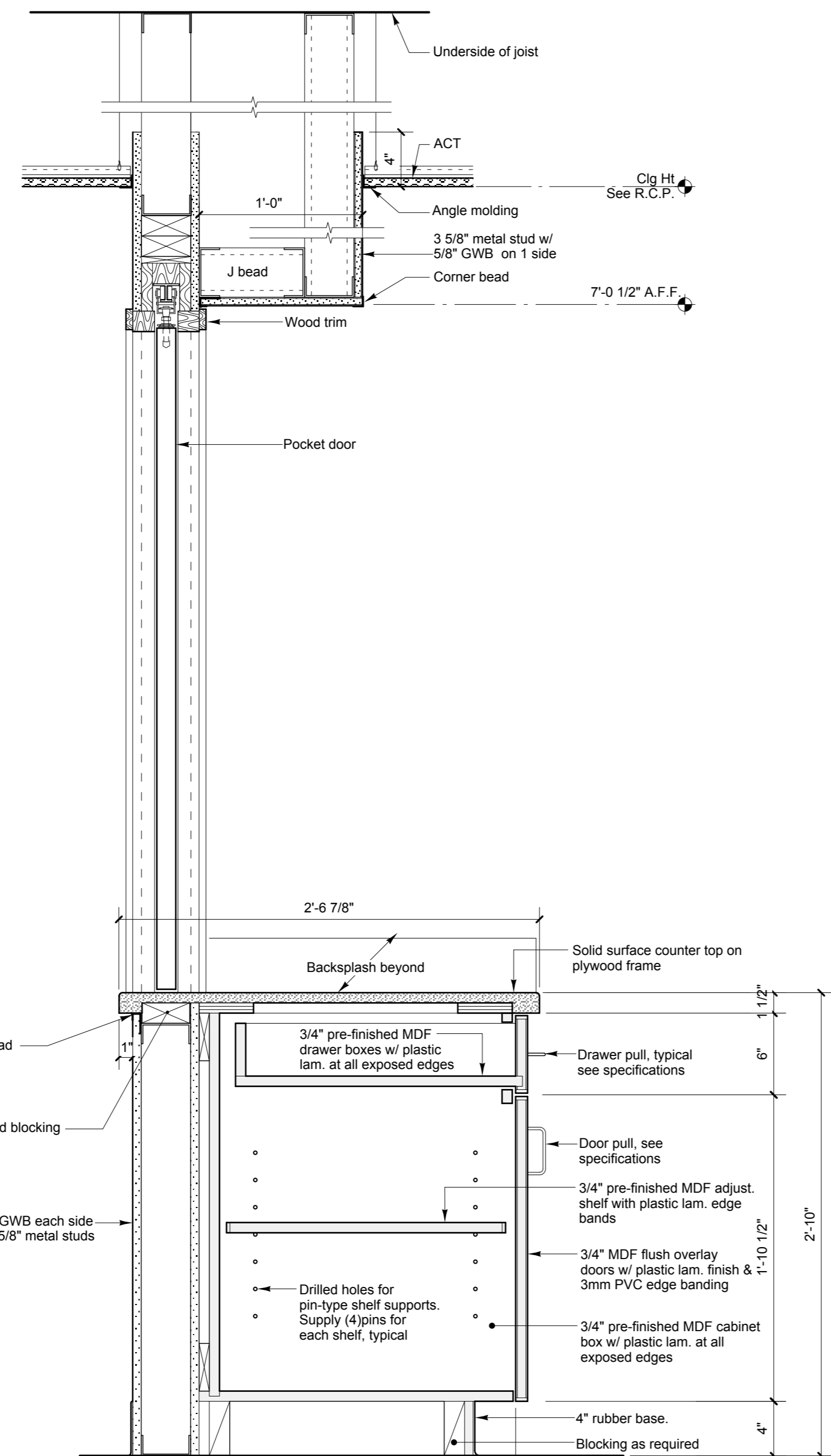
12 SECTION DETAIL AT PULL-OUT CABINET
SCALE: 1 1/2" = 1'-0"



13 SECTION DETAIL AT BAR SINK
SCALE: 1 1/2" = 1'-0"



11 SECTION DTL AT KITCHEN BUILT-IN OVENS
SCALE: 1 1/2" = 1'-0"



14 SECTION DTL AT BASE CABINET AND POCKET DOOR
SCALE: 1 1/2" = 1'-0"