

**POWERPAY
OFFICE FIT UP**

Winton Scott
Architects
5 Milk Street
Portland, ME 04101

Wright Ryan
Construction, Inc.
10 Danforth Street
Portland, ME 04101

Becker Structural
Engineers, Inc.
75 York Street
Portland, Maine 04101

Mechanical
Systems
Engineers
10 Royal River Center
Yarmouth, Maine 04096

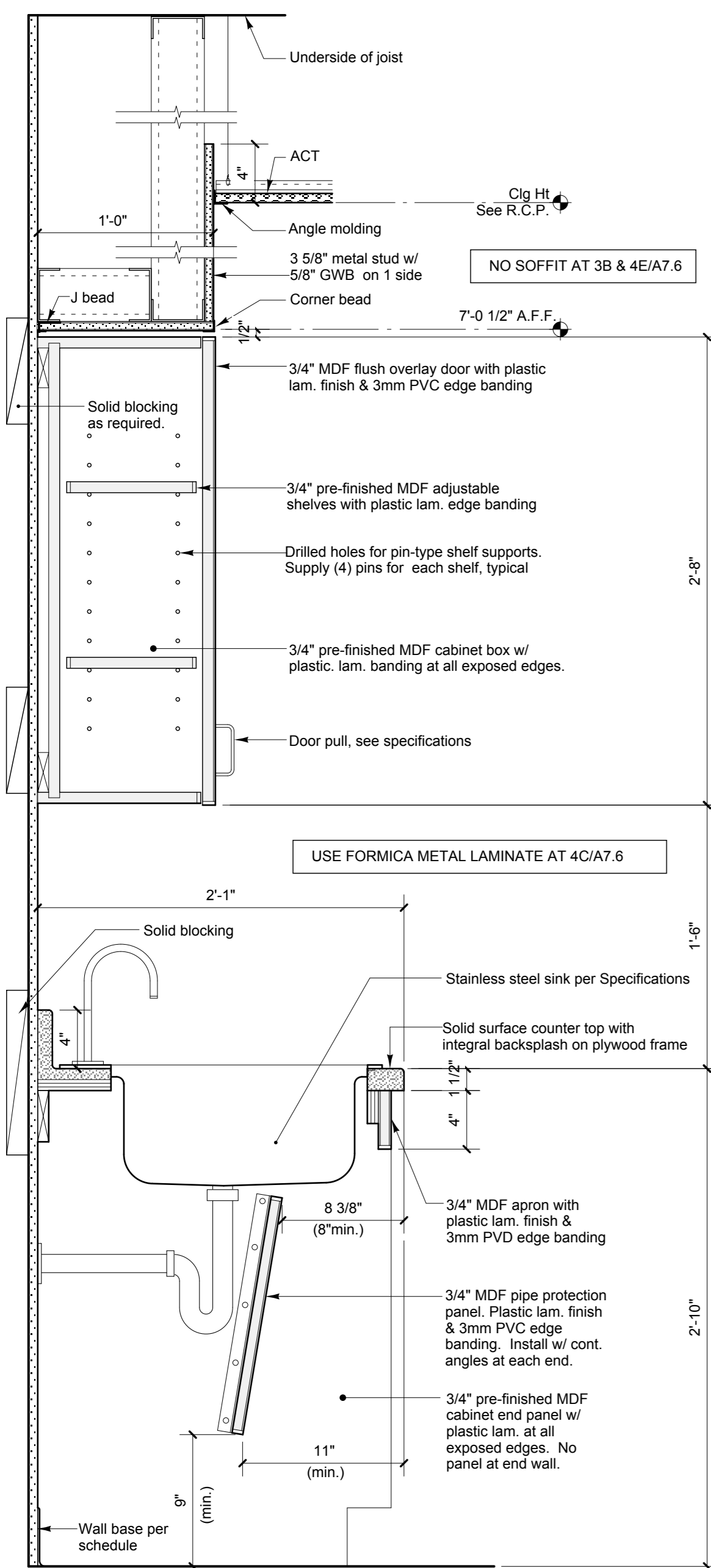
Bartlett Design
942 Washington Ave.
Bath, Maine 04530

Fore Solutions
386 Fore Street
Portland, Maine 04101

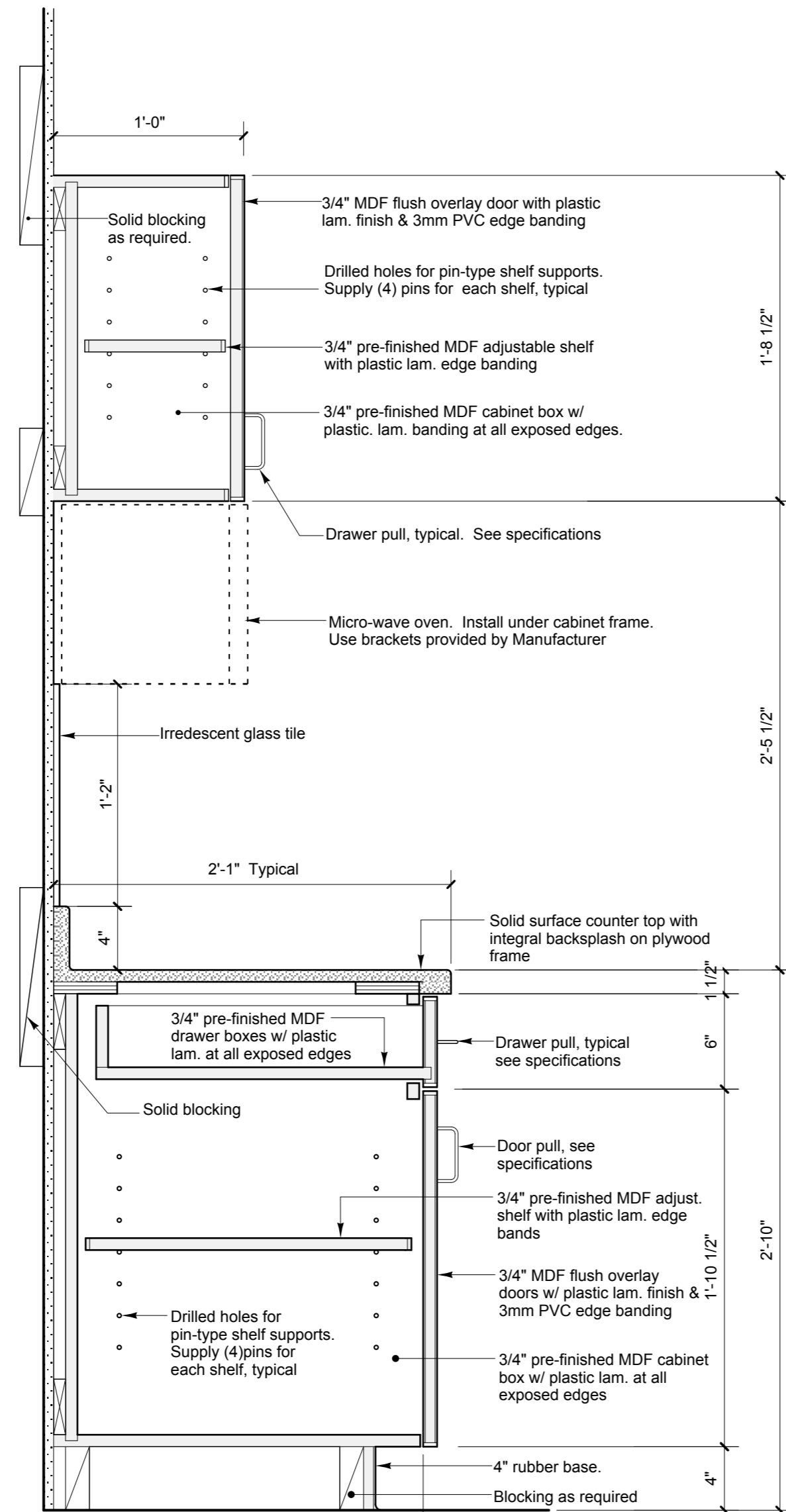
MILLWORK DETAILS

A7.7

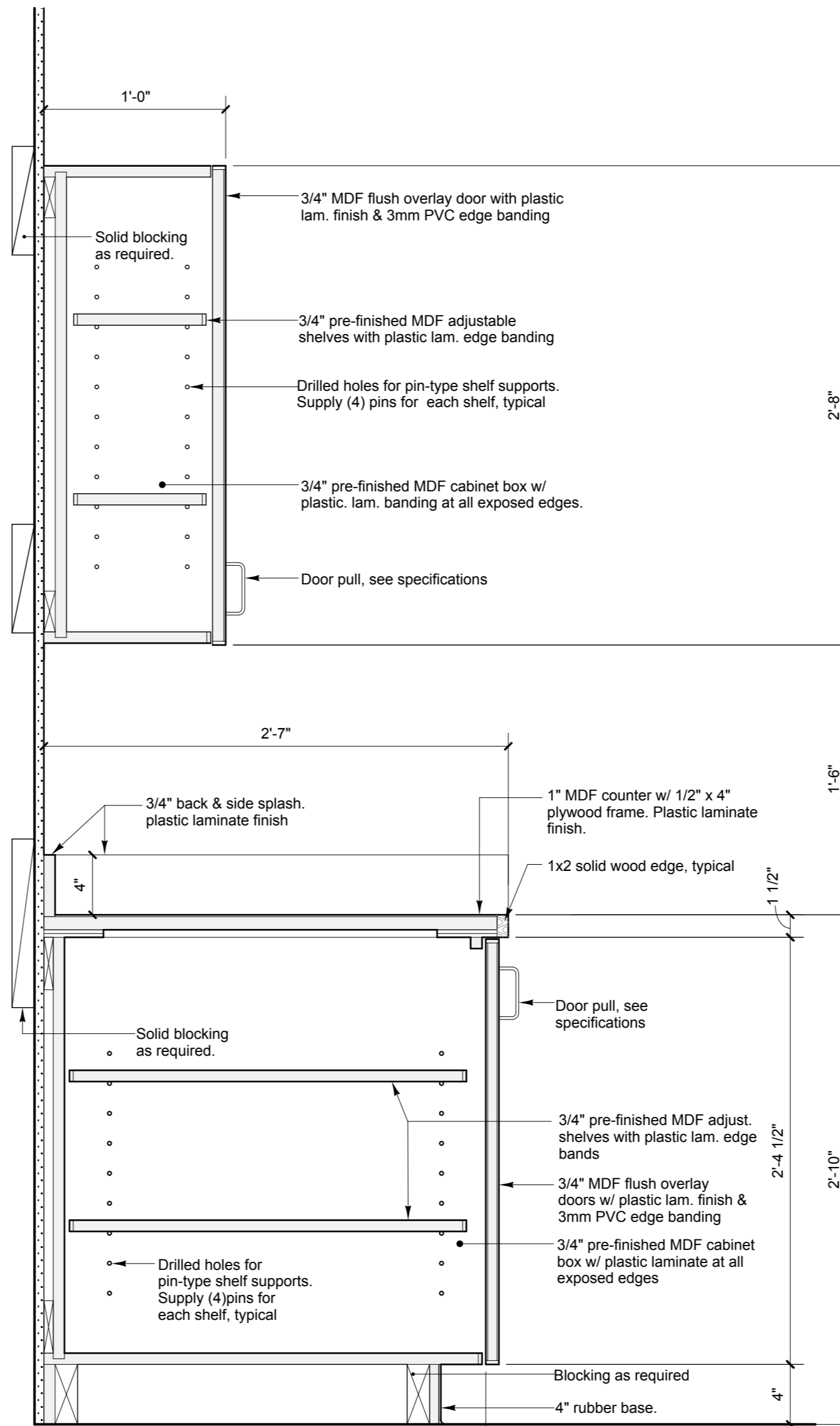
Scale: as indicated Date: 3.20.09



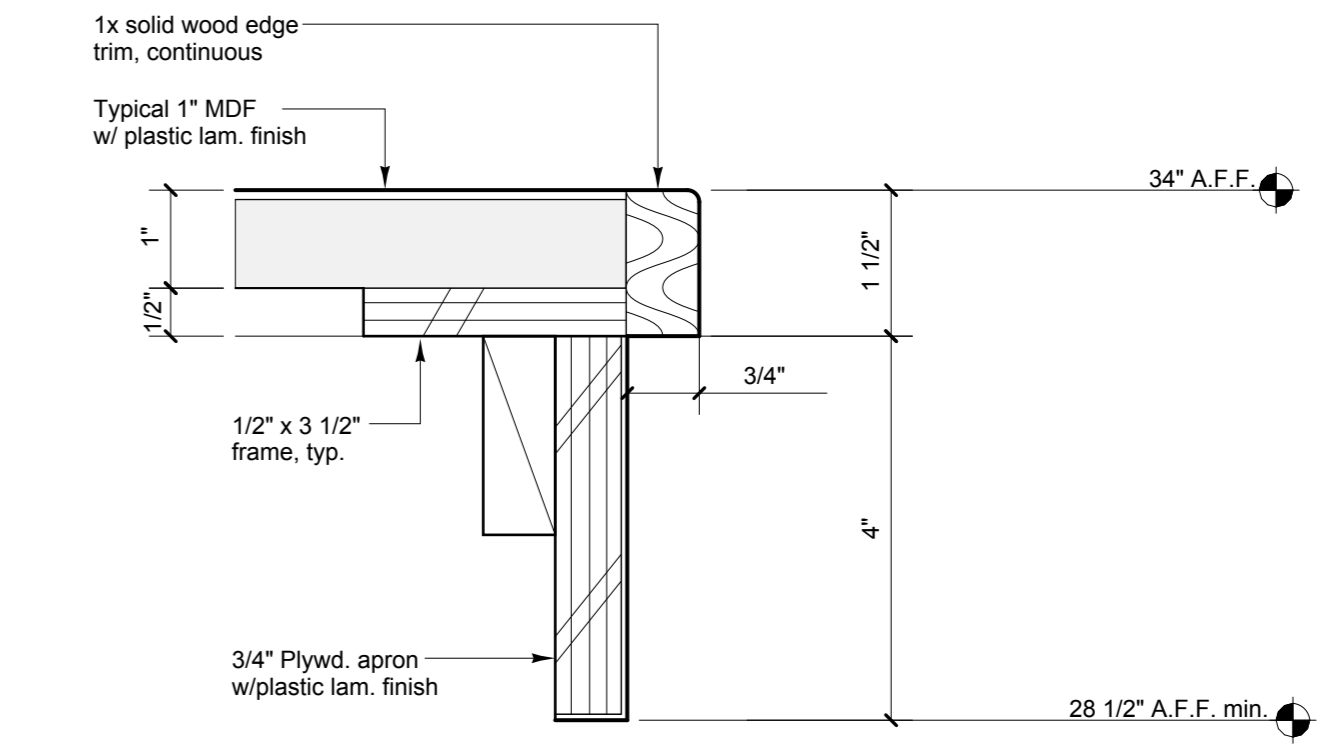
1 SECTION DETAIL AT SINK
SCALE: 1 1/2" = 1'-0"



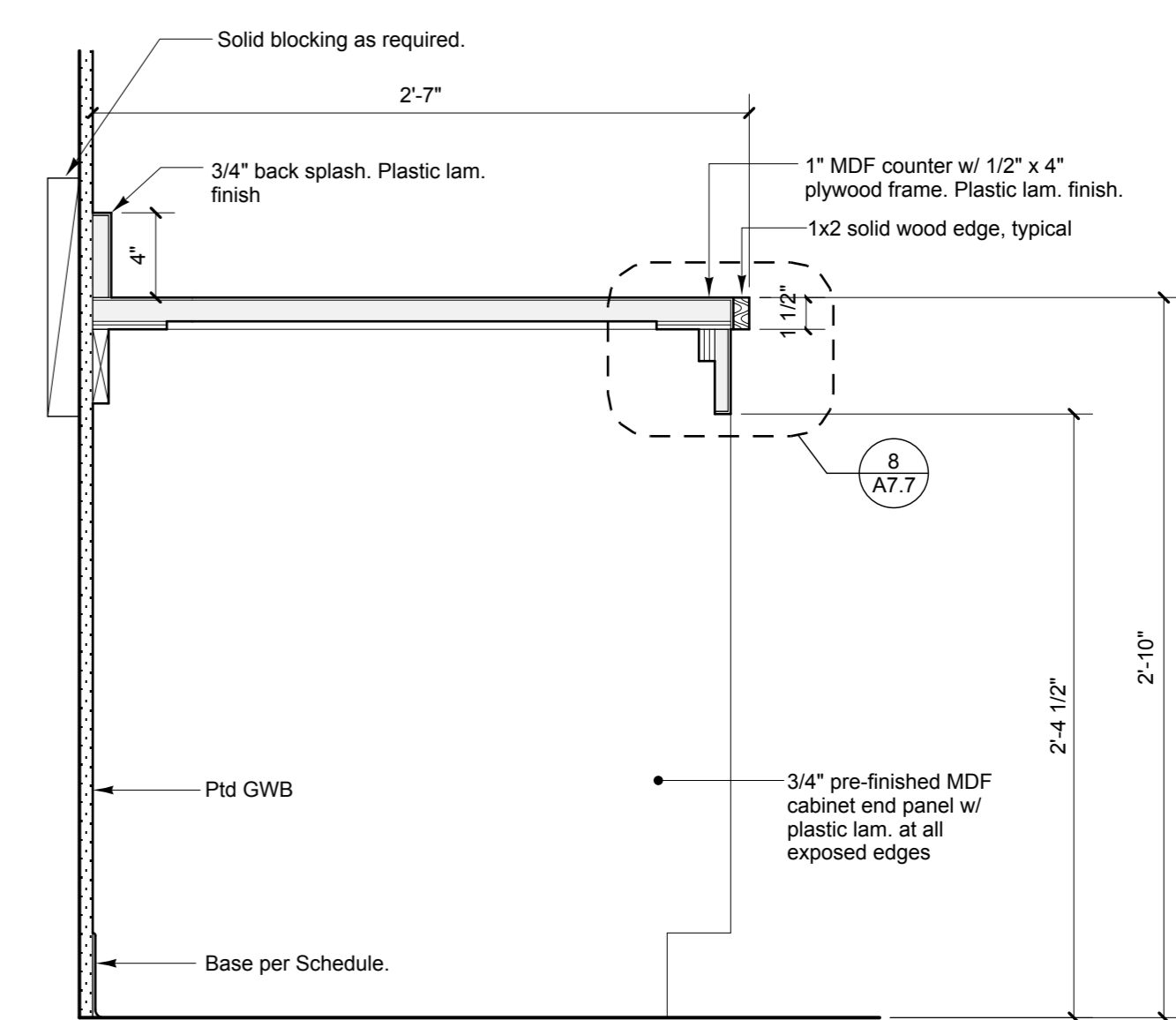
3 SECTION DTL AT BASE CAB. AND UNDER CAB. M-W
SCALE: 1 1/2" = 1'-0"



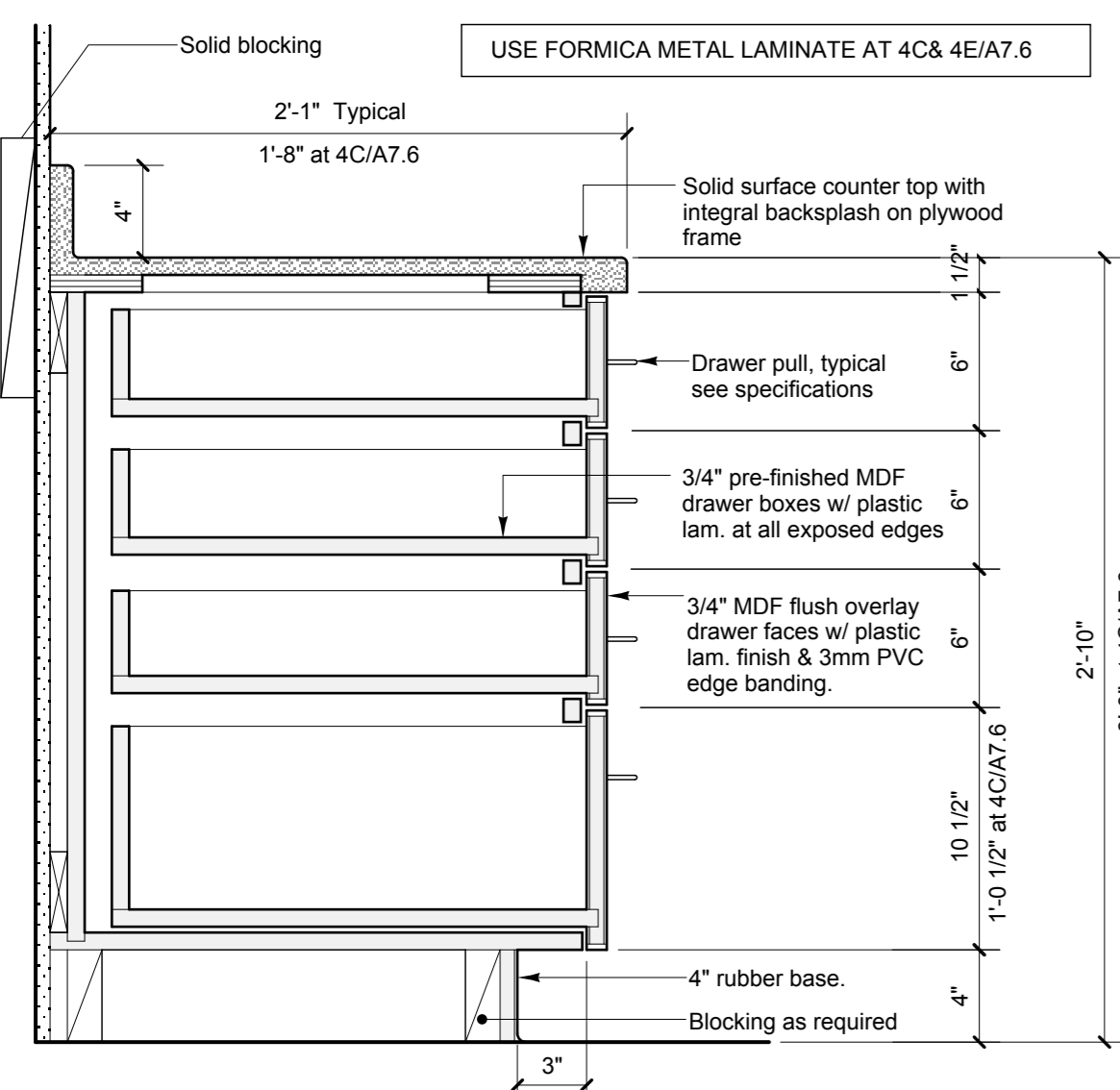
5 SECTION DTL AT BASE & UPPER CAB. / PLASTIC LAM COUNTER
SCALE: 1 1/2" = 1'-0"



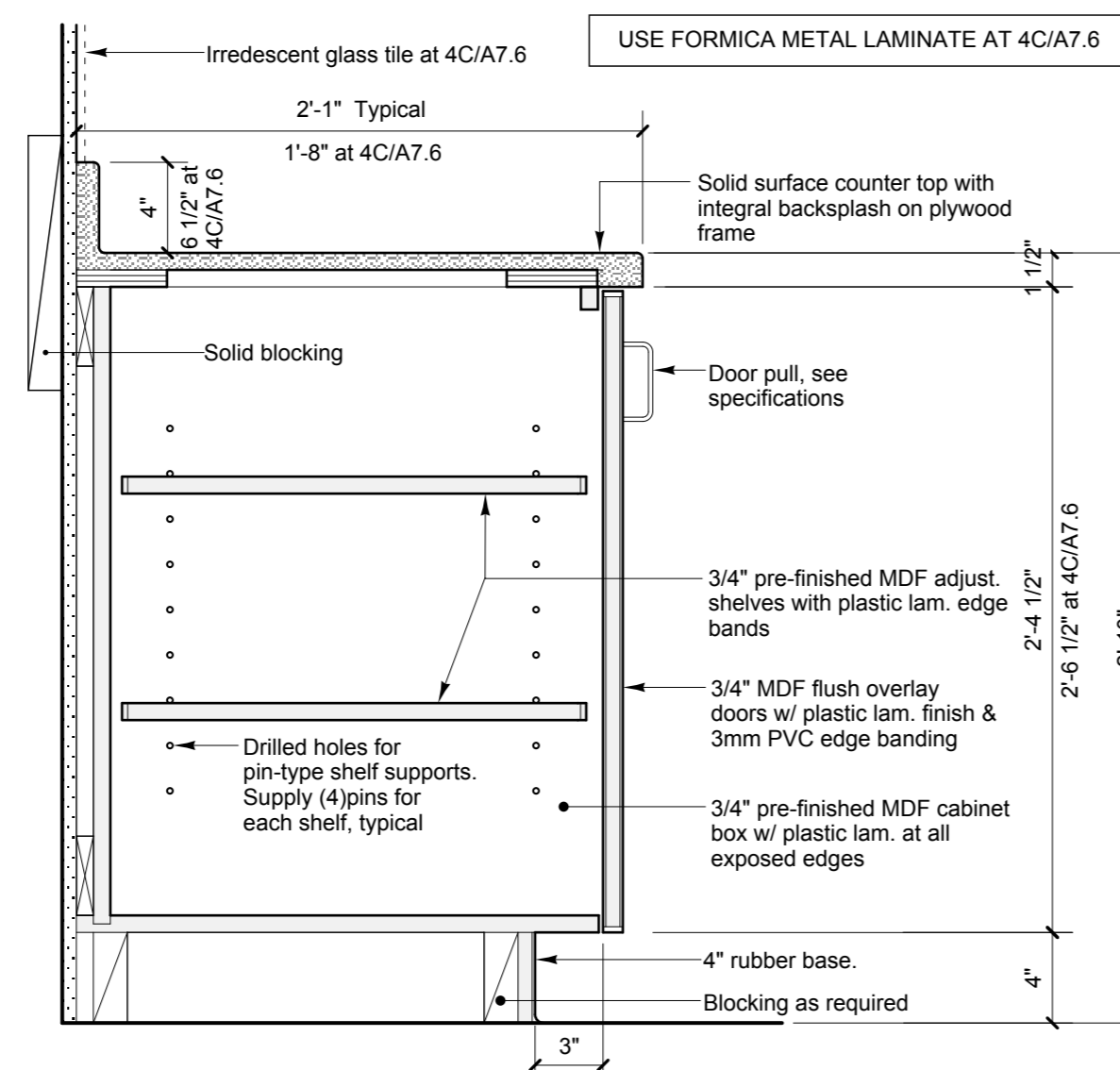
8 COUNTER EDGE DTL AT KNEE SPACE / PLASTIC LAM. COUNTER
SCALE: 6" = 1'-0"



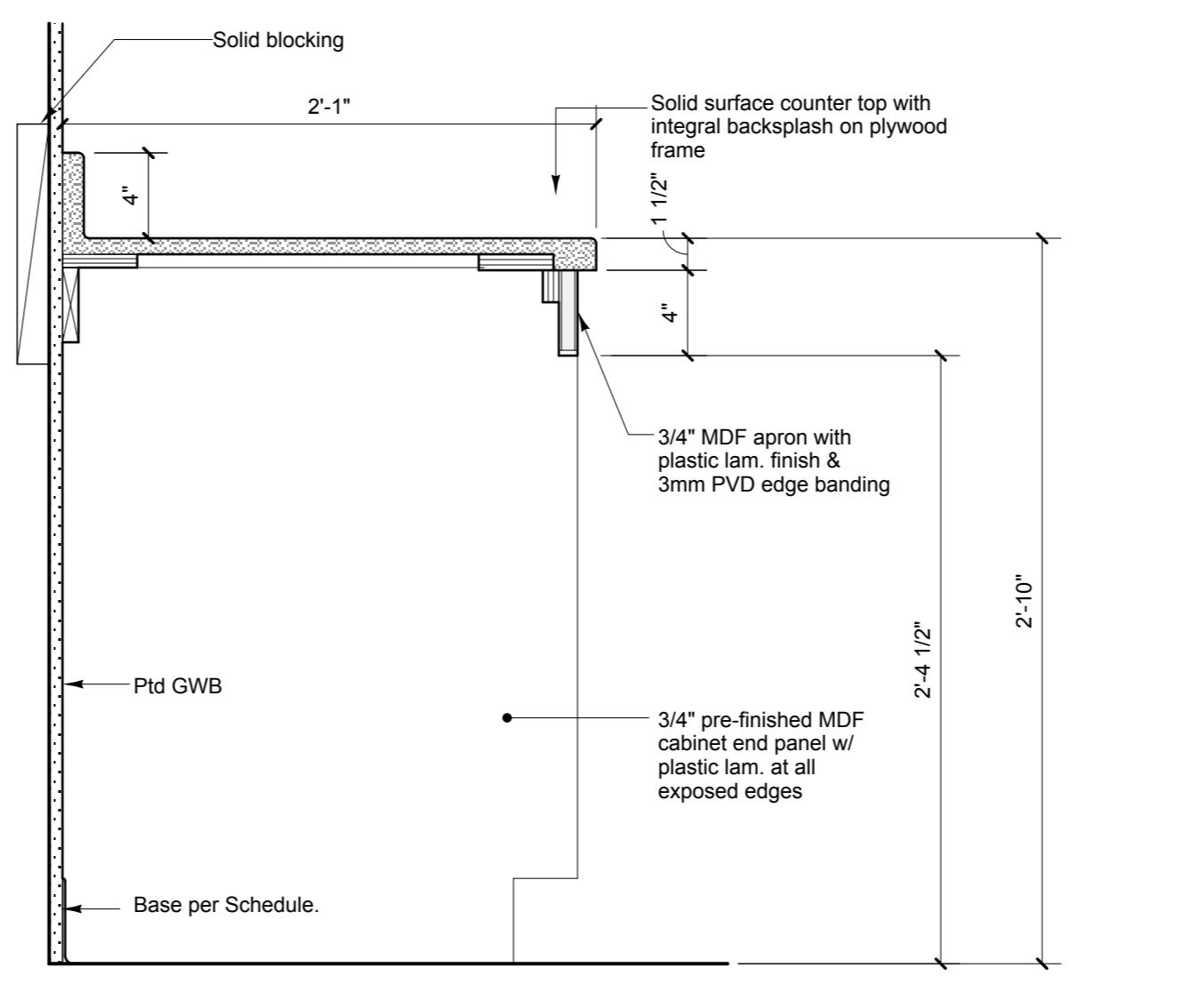
7 SECTION DTL AT KNEE SPACE / PLASTIC LAM. COUNTER
SCALE: 1 1/2" = 1'-0"



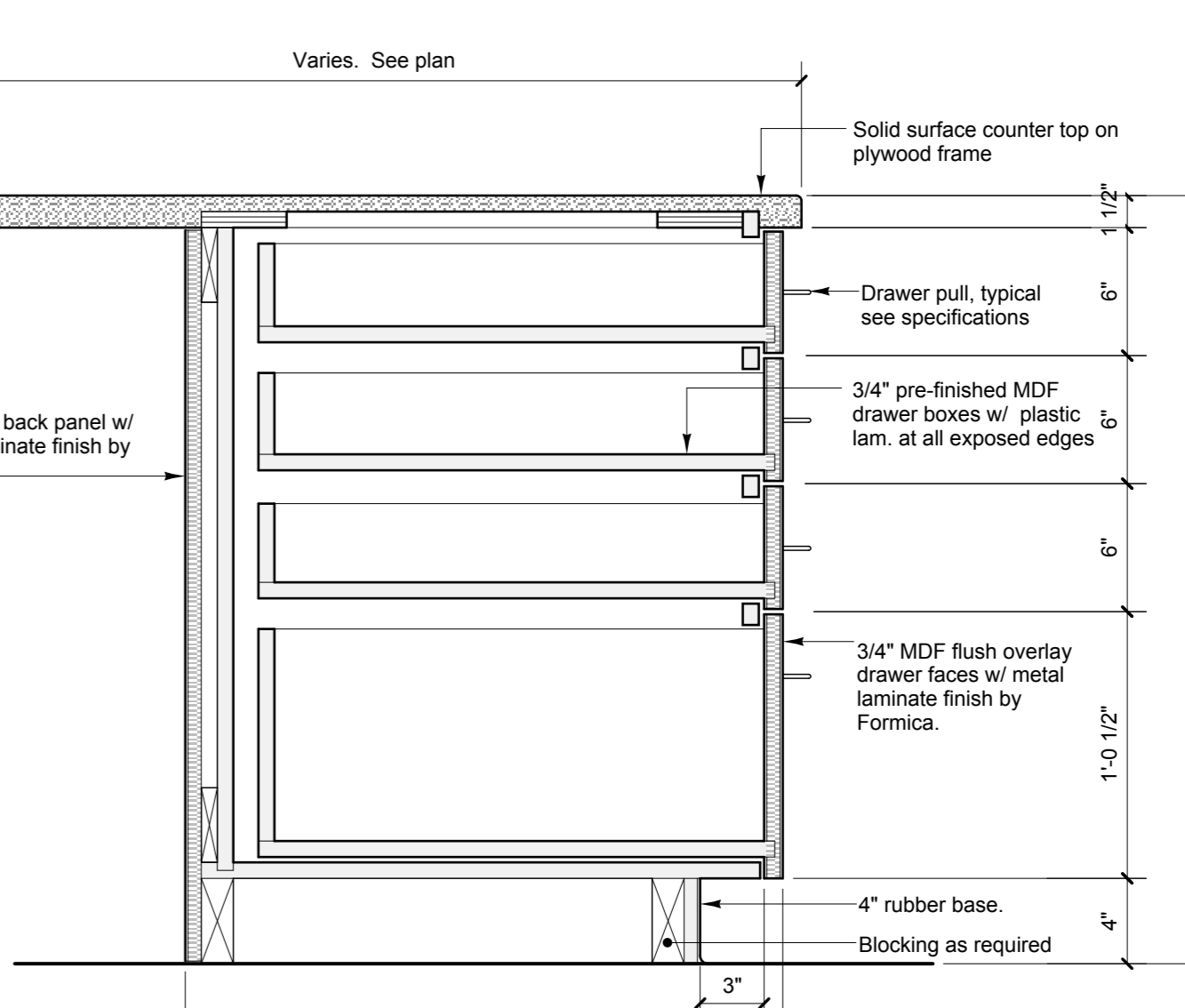
2 SECTION DETAIL AT DRAWER BASE
SCALE: 1 1/2" = 1'-0"



4 SECTION DETAIL AT CONFERENCE ROOM BASE CABINET
SCALE: 1 1/2" = 1'-0"



6 SECTION DTL AT KNEE SPACE / SOLID SURFACE COUNTER
SCALE: 1 1/2" = 1'-0"



9 SECTION DETAIL AT KITCHEN ISLAND DRAWER CABINET
SCALE: 1 1/2" = 1'-0"