

**POWERPAY  
OFFICE FIT UP**

Winton Scott  
Architects  
5 Milk Street  
Portland, ME 04101

Wright Ryan  
Construction, Inc.  
10 Danforth Street  
Portland, ME 04101

Becker Structural  
Engineers, Inc.  
75 York Street  
Portland, Maine 04101

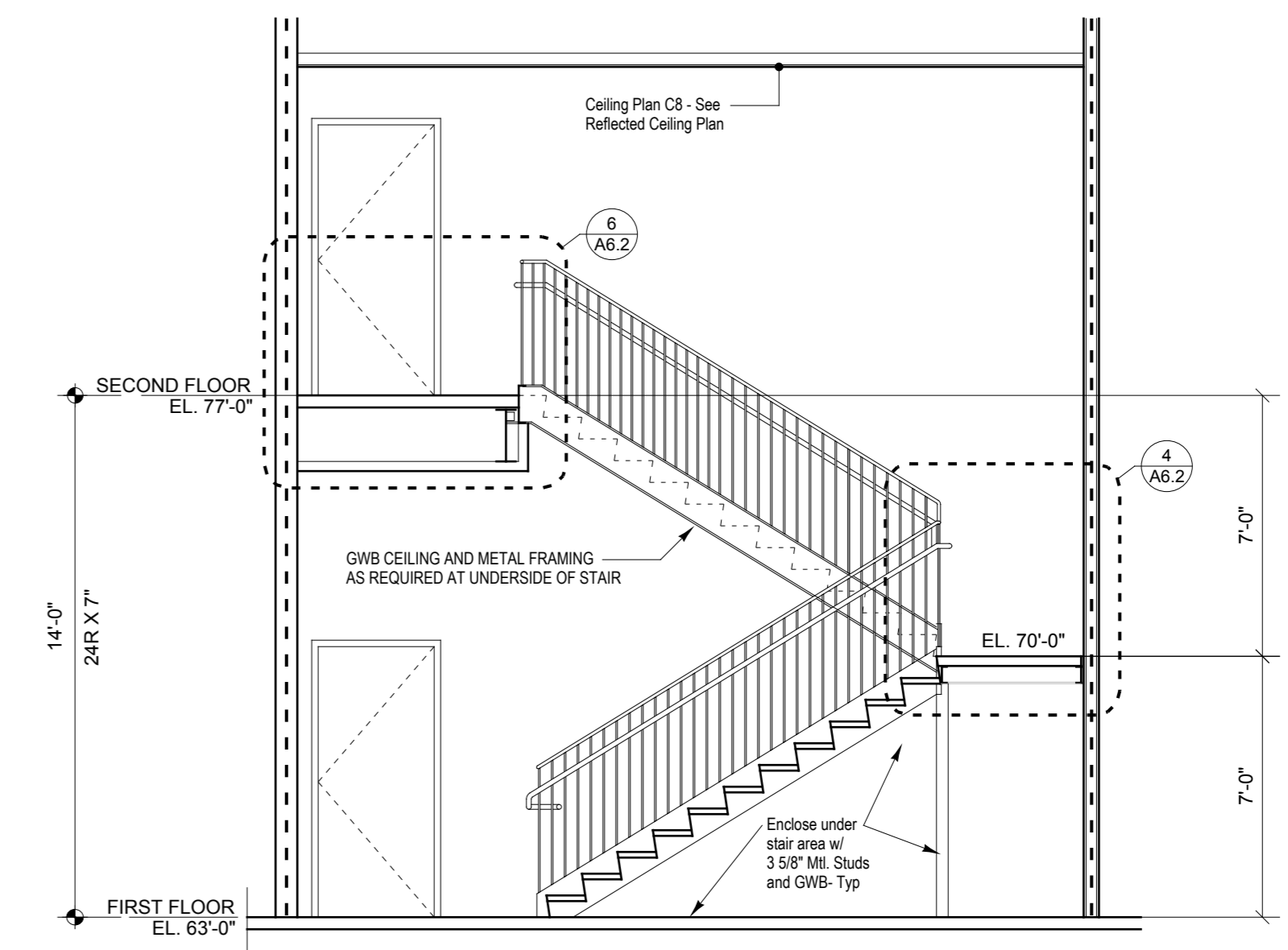
Mechanical  
Systems  
Engineers  
10 Royal River Center  
Yarmouth, Maine 04096

Bartlett Design  
942 Washington Ave.  
Bath, Maine 04530

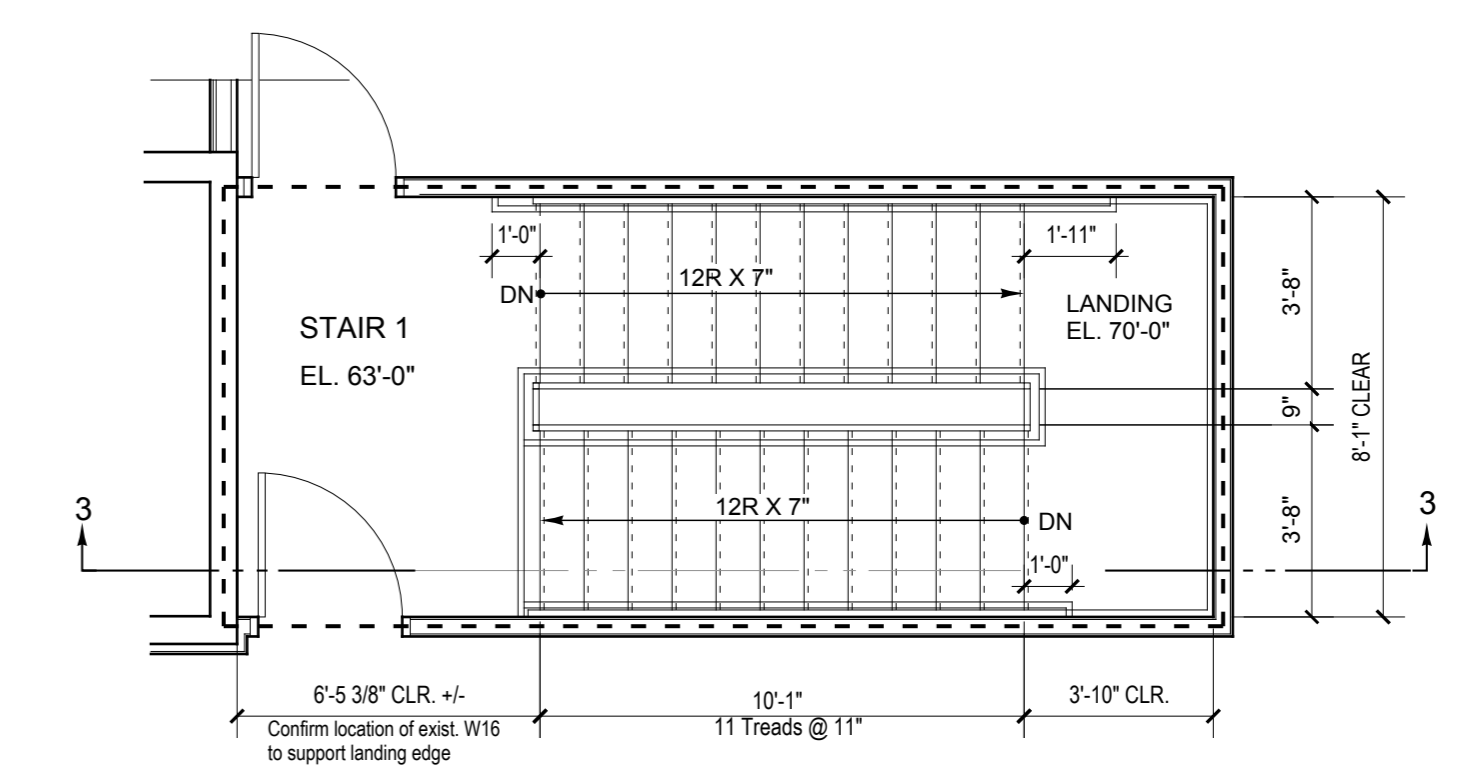
Fore Solutions  
386 Fore Street  
Portland, Maine 04101

**STAIR 1 DETAILS**

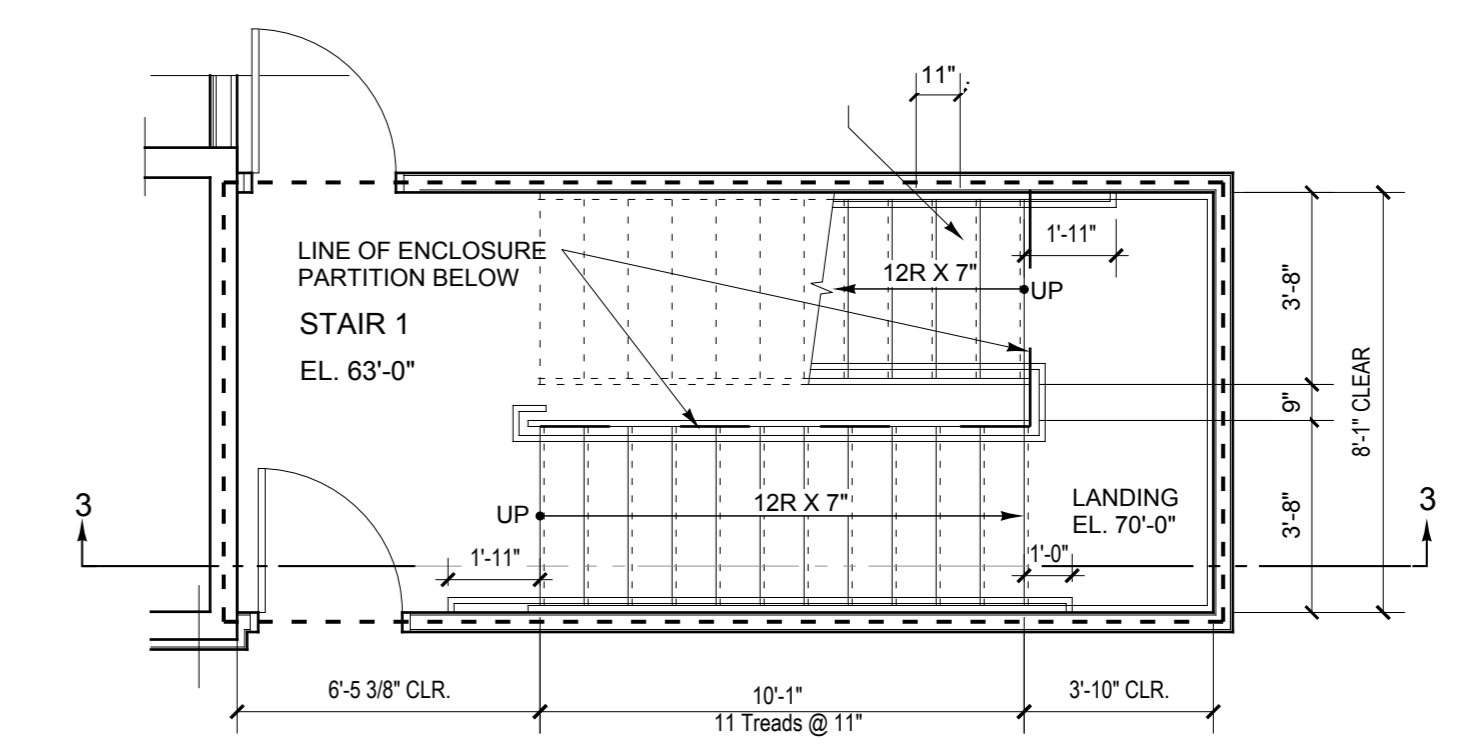
**A6.2**



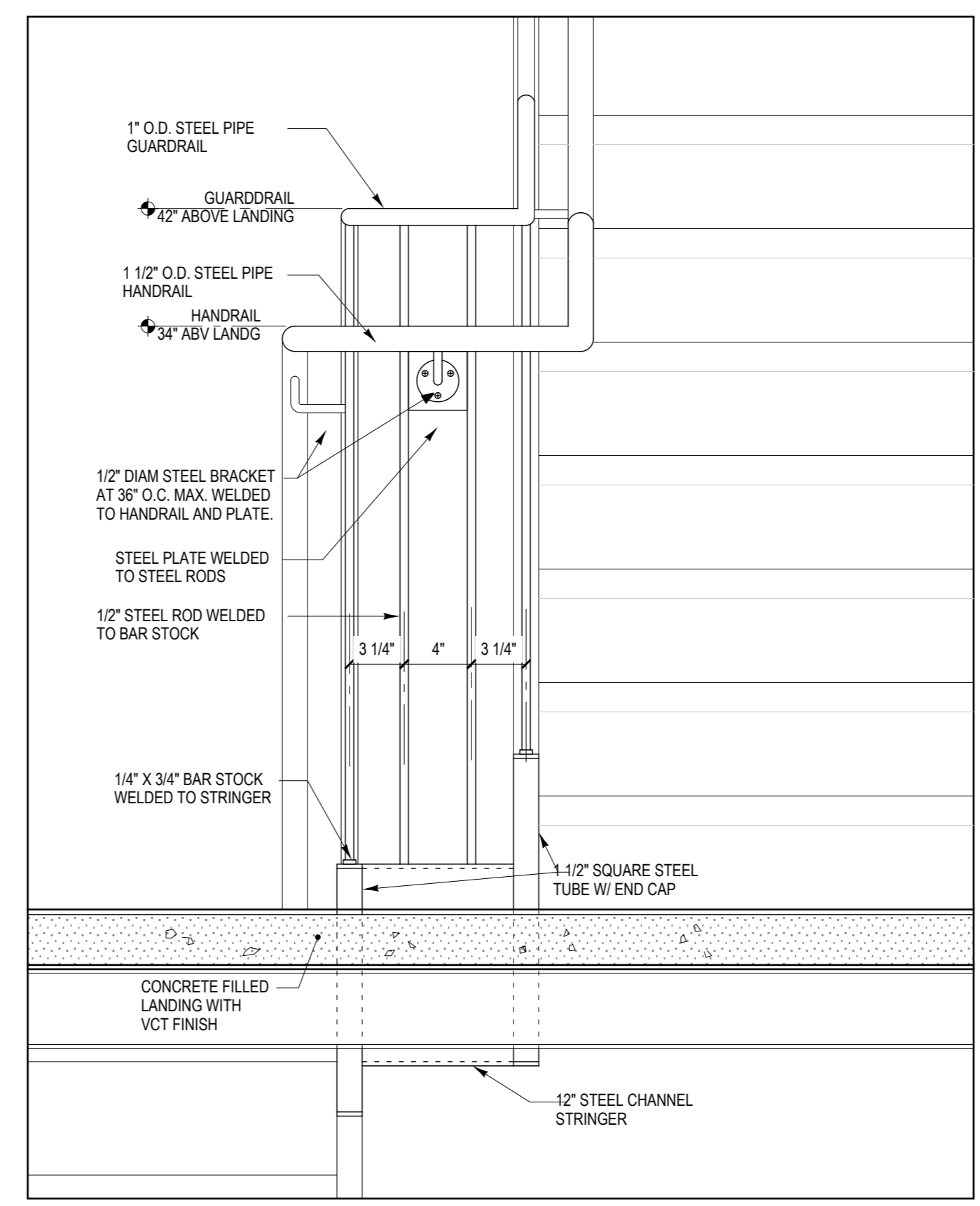
**3 STAIR 1 - Section**  
1/4" = 1'-0"



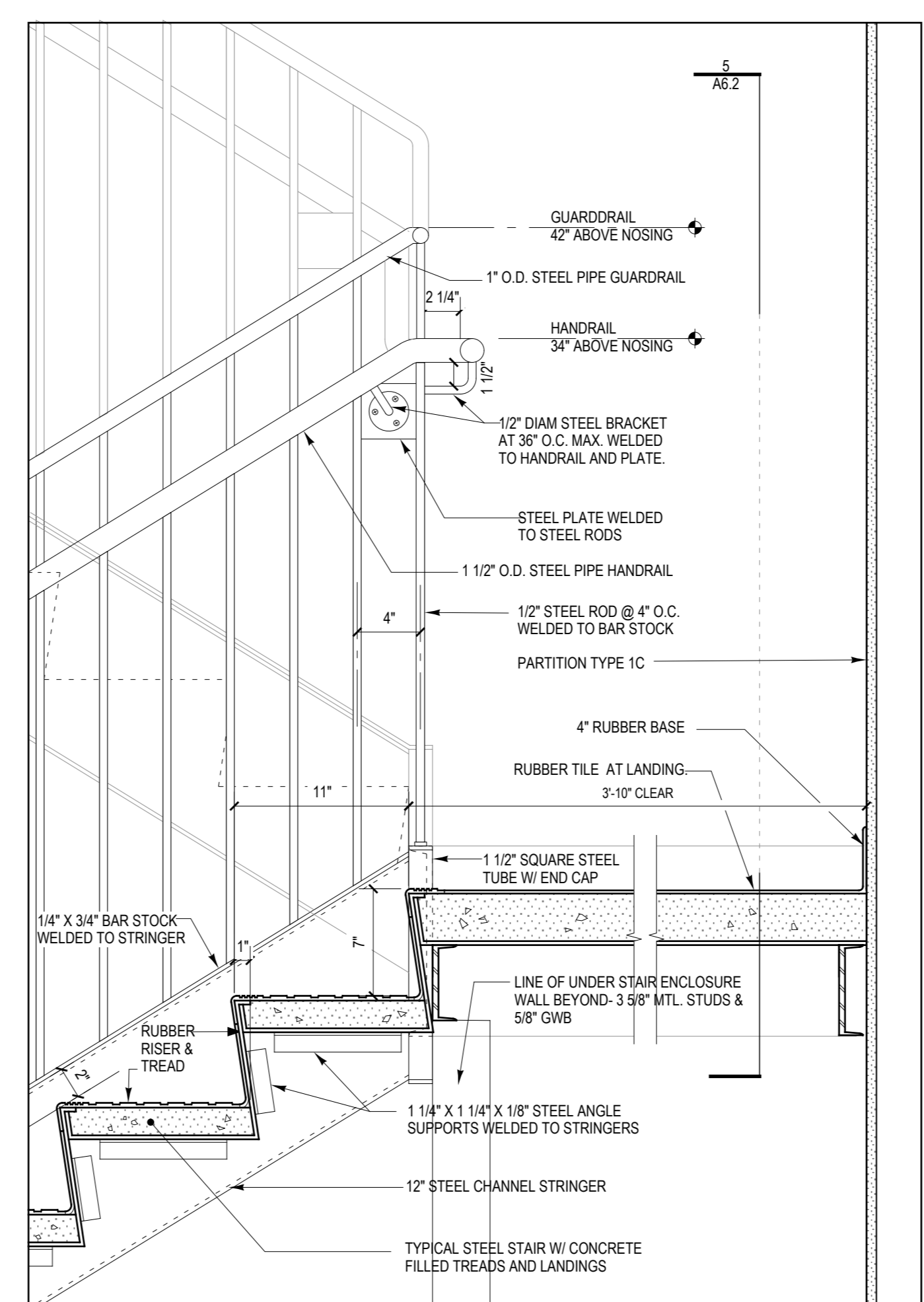
**2 STAIR 1 - Second Floor Plan**  
1/4" = 1'-0"



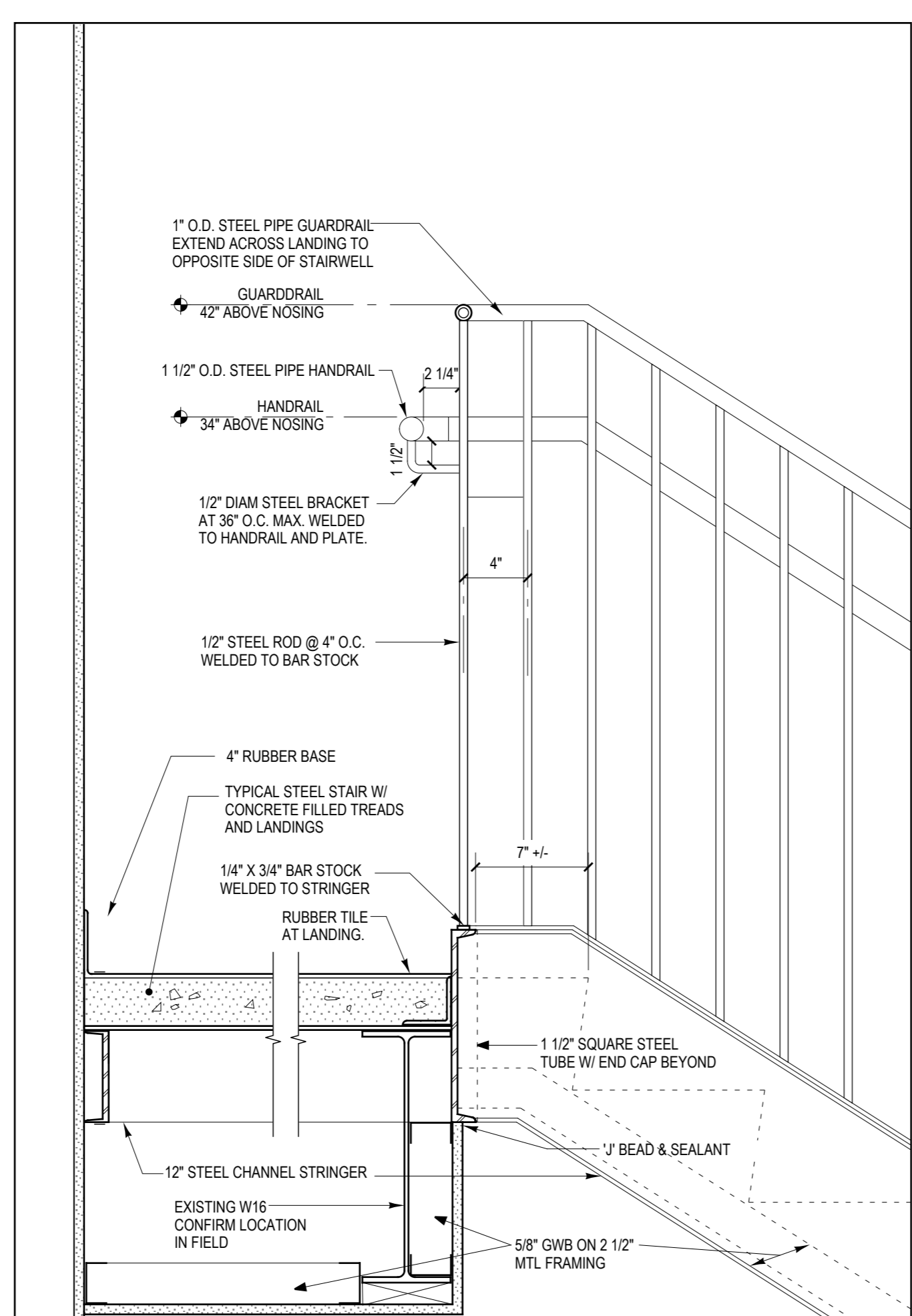
**1 STAIR 1 - First Floor Plan**  
1/4" = 1'-0"



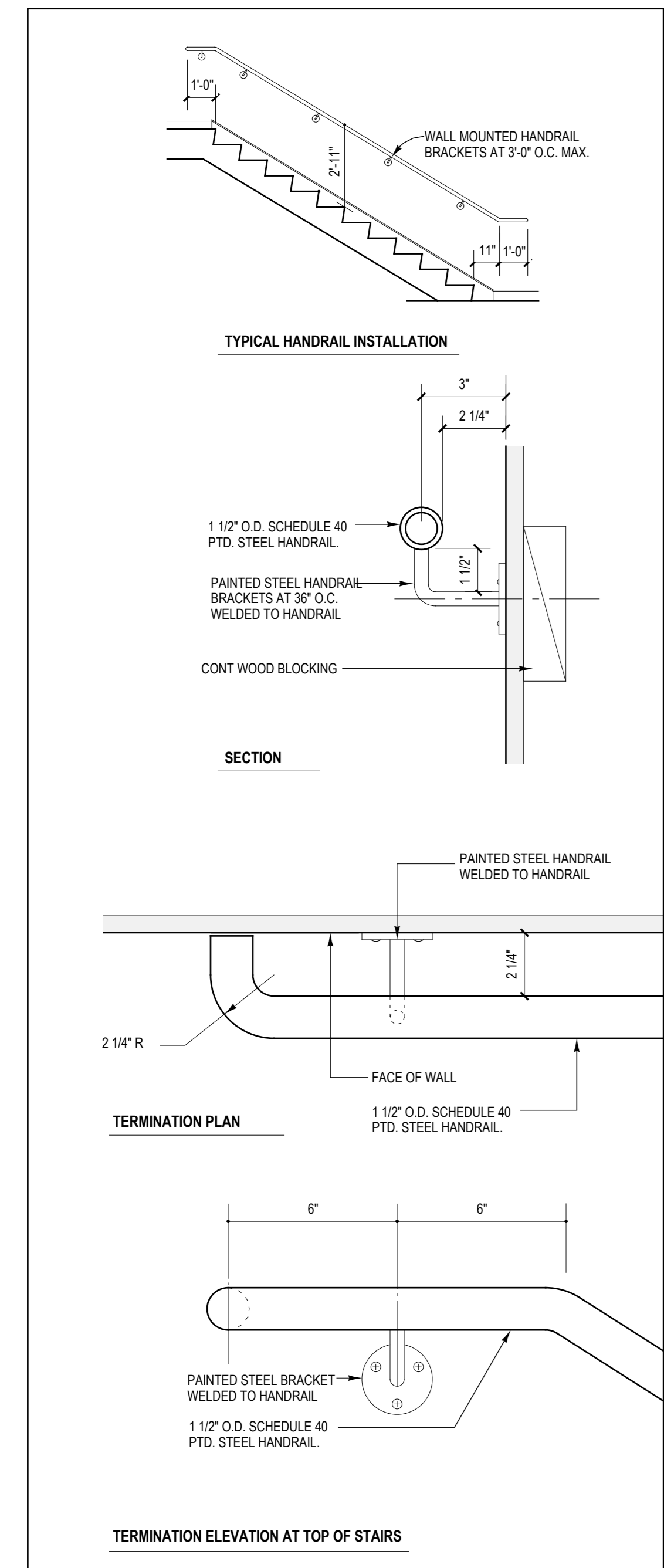
**5 STAIR 1 - Section Detail**  
1 1/2" = 1'-0"



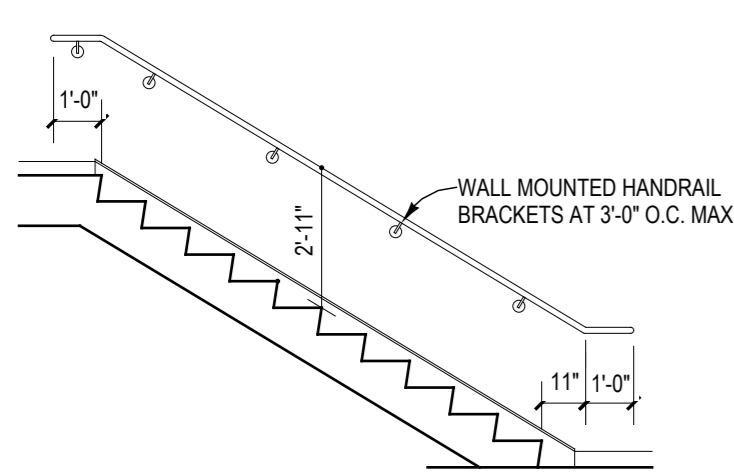
**4 STAIR 1 - Section Detail**  
1 1/2" = 1'-0"



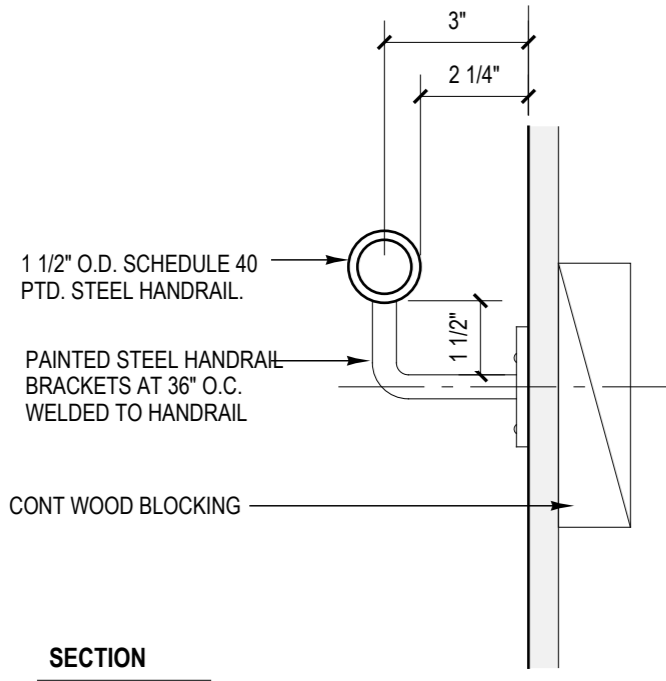
**6 STAIR 1 - Section Detail**  
1 1/2" = 1'-0"



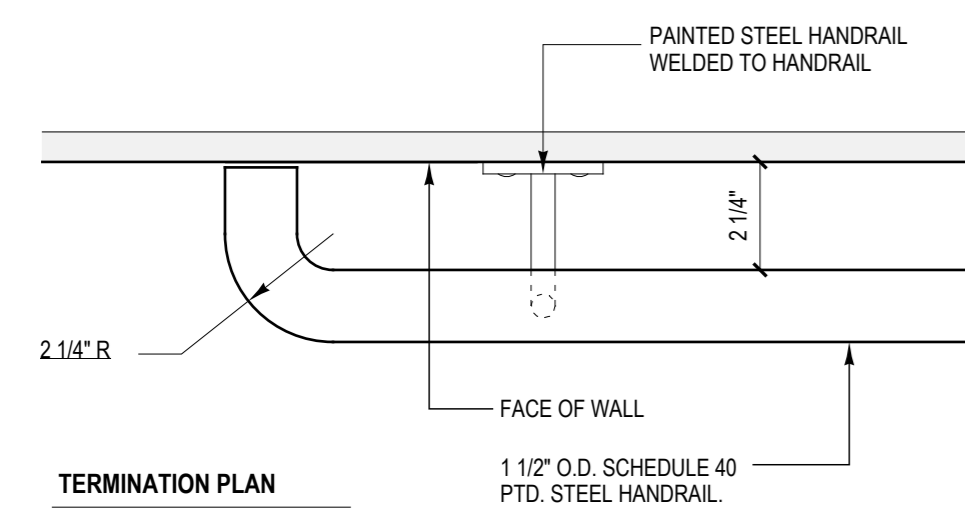
**7 STAIR 1 - Typ. Wall Mntd. Hand Rail Dtl.**  
1 1/2" = 1'-0"



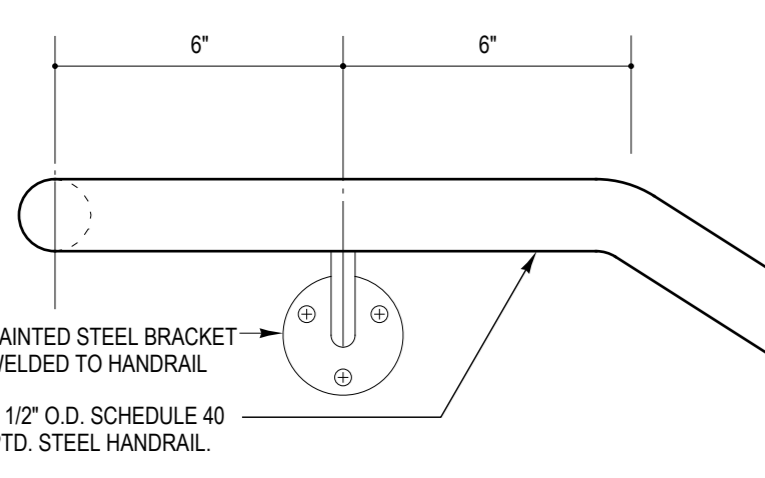
TYPICAL HANDRAIL INSTALLATION



SECTION



TERMINATION PLAN



TERMINATION ELEVATION AT TOP OF STAIRS