

**POWERPAY
OFFICE FIT UP**

**Winton Scott
Architects**
5 Milk Street
Portland, ME 04101

**Wright Ryan
Construction, Inc.**
10 Danforth Street
Portland, ME 04101

**Becker Structural
Engineers, Inc.**
75 York Street
Portland, Maine 04101

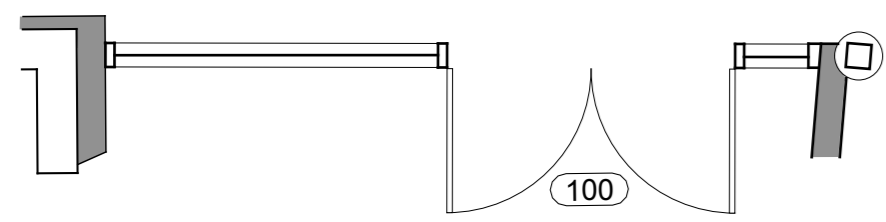
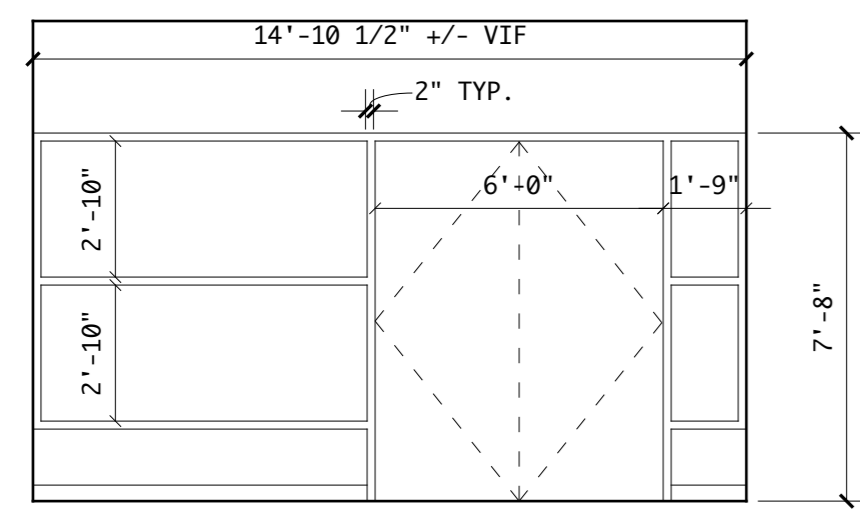
**Mechanical
Systems
Engineers**
10 Royal River Center
Yarmouth, Maine 04096

Bartlett Design
942 Washington Ave.
Bath, Maine 04530

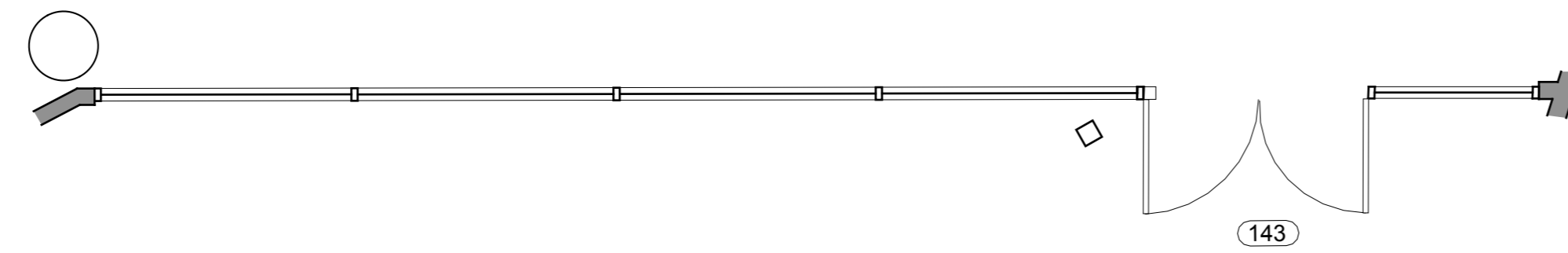
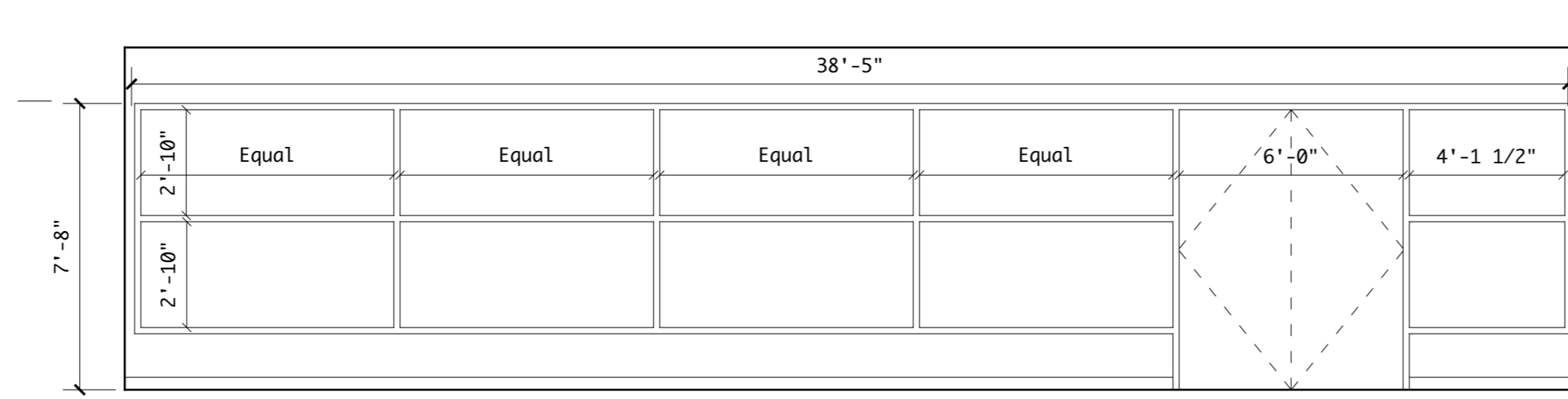
Fore Solutions
386 Fore Street
Portland, Maine 04101

WINDOW TYPES

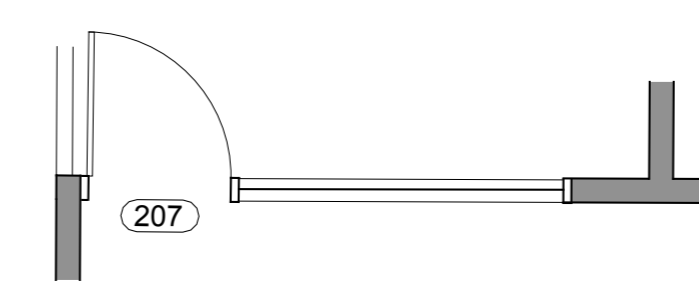
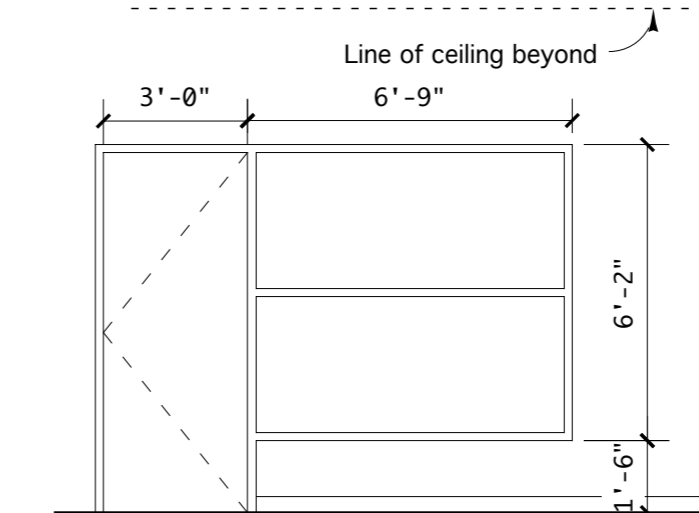
A5.1



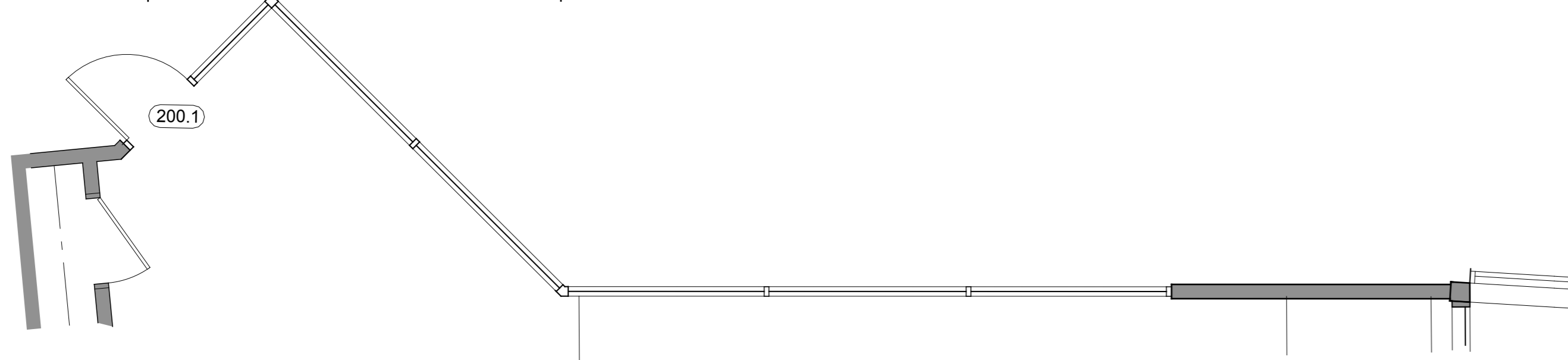
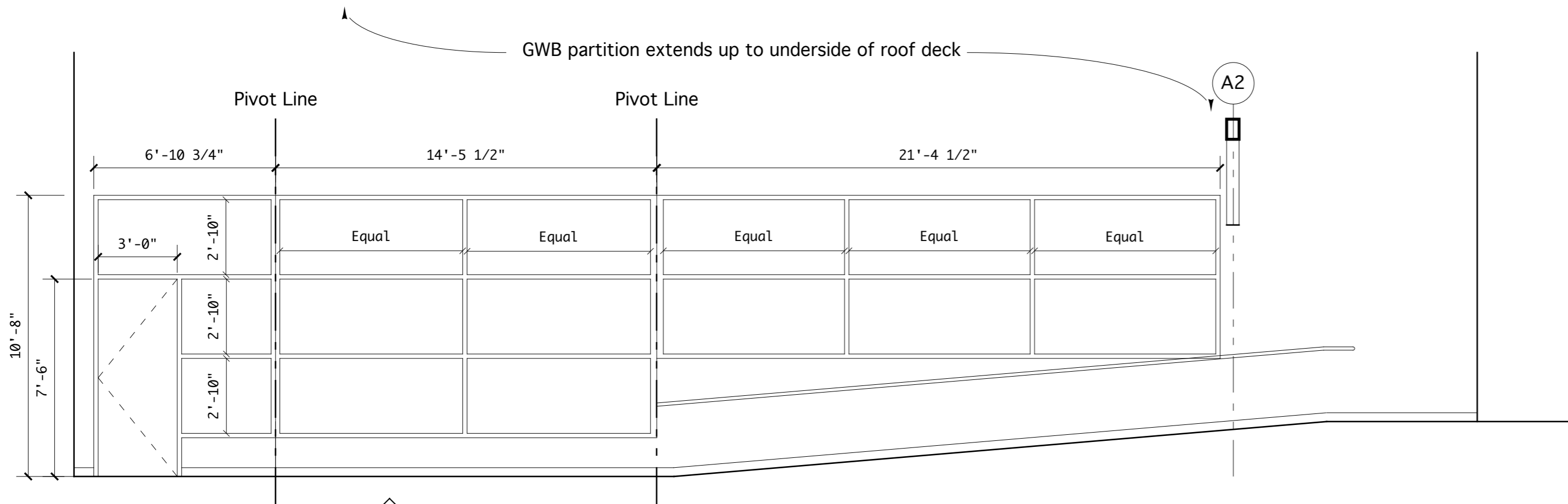
**3.1 Interior Storefront - 2"w x 4 1/2"d
1/4" = 1'-0" frame - Typ.**



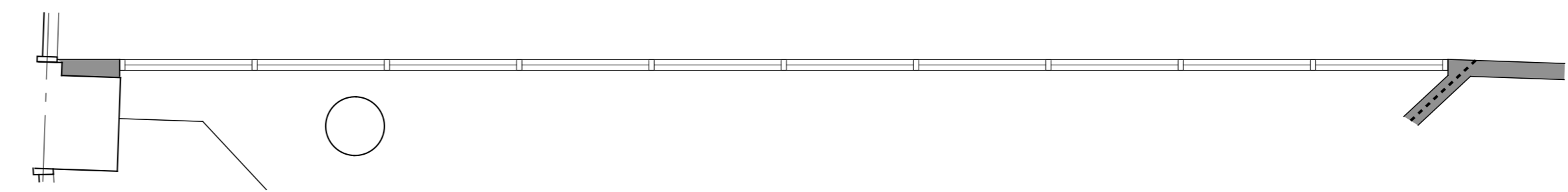
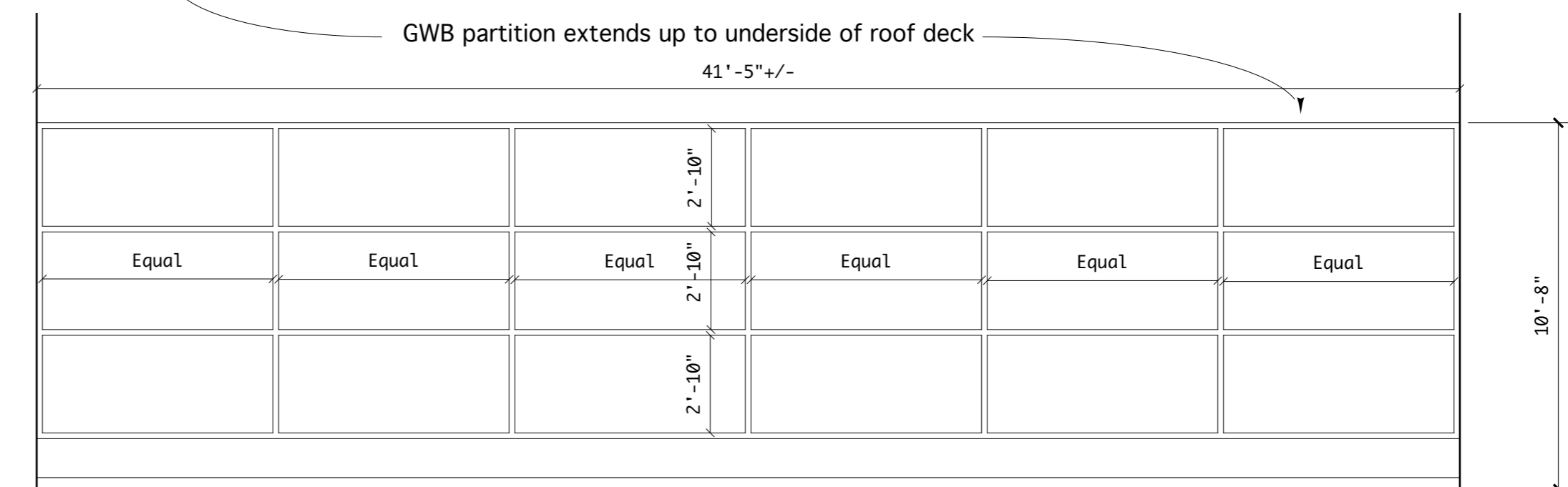
**3.2 Interior Storefront - 2"w x 4 1/2"d frame - Typ.
1/4" = 1'-0"**



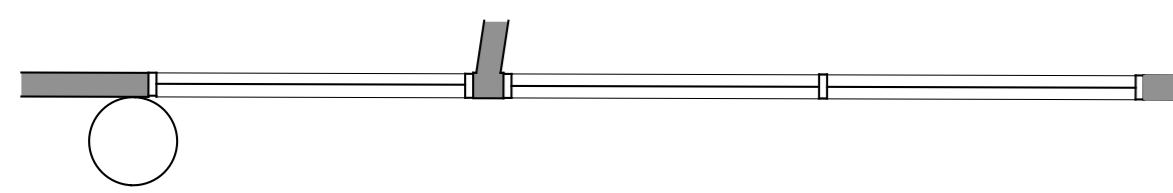
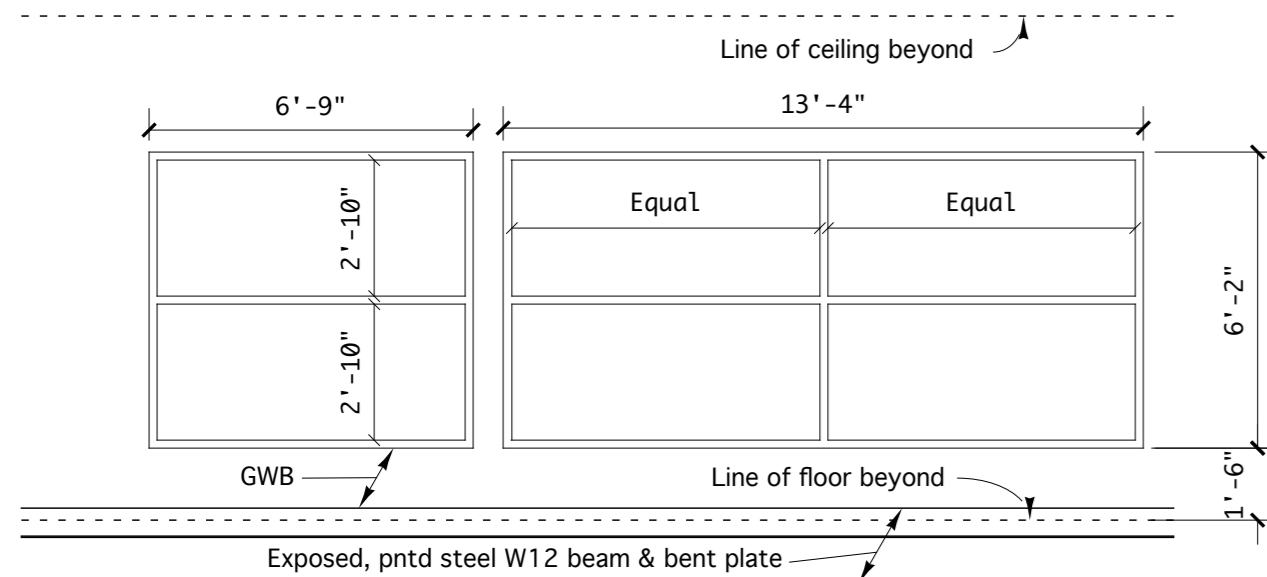
**3.6 Interior Storefront - 2"w x 4 1/2"d
1/4" = 1'-0" frame - Typ.**



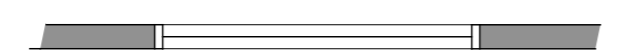
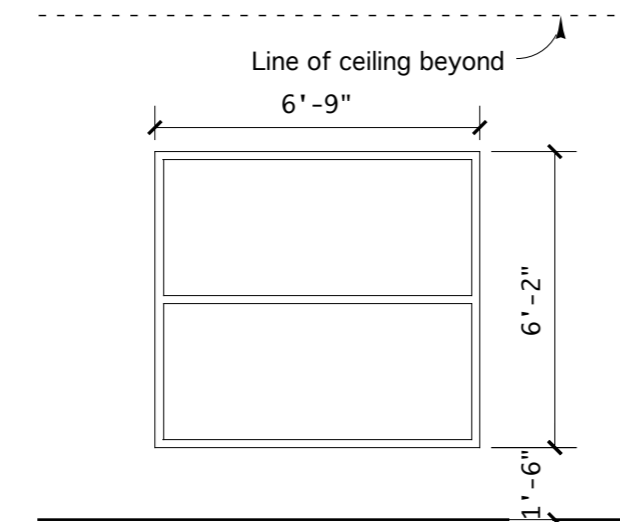
**3.3 Interior Storefront - 2"w x 4 1/2"d frame - Typ.
1/4" = 1'-0"**



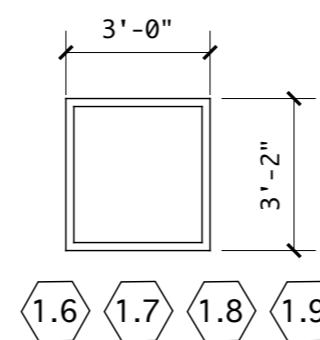
**3.7 Interior Storefront - 2"w x 4 1/2"d frame - Typ.
1/4" = 1'-0"**



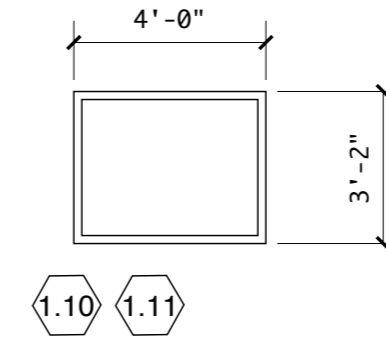
**3.4 Interior Storefront - 2"w x 4 1/2"d frame - Typ.
1/4" = 1'-0"**



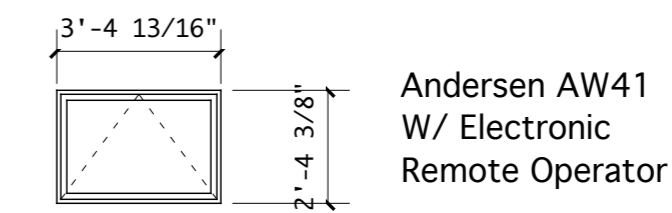
**3.5 Interior Storefront - 2"w x 4 1/2"d
1/4" = 1'-0" frame - Typ.**



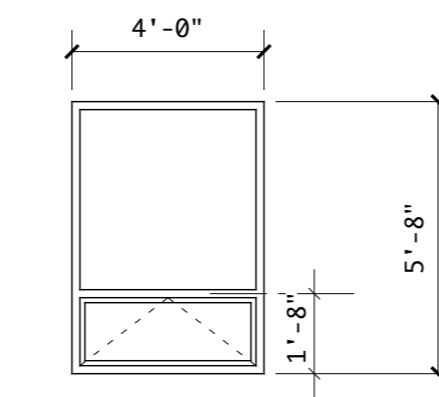
**Fixed Aluminum Window
1/4" = 1'-0"**



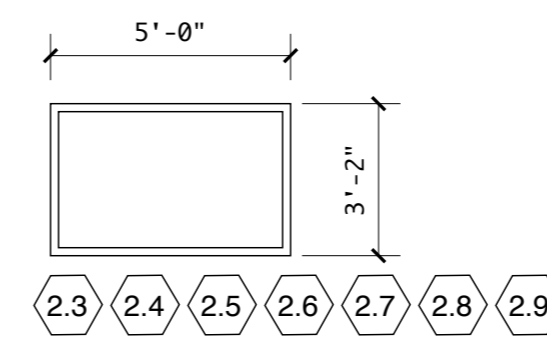
**Fixed Aluminum Window
1/4" = 1'-0"**



**Vinyl Clad Wood Awning Window
1/4" = 1'-0" SEE SHEET A2.2 FOR DETAILS**



**Fixed /Operable Alum.Window
1/4" = 1'-0"**



**Fixed Aluminum Window
1/4" = 1'-0"**

CONTRACTOR NOTE:
SEE DETAILS H5/J5 ON SHEET A7.3 FOR TYPICAL JAMB, HEAD, AND MULLION DETAILS FOR ALL INTERIOR GLASS WALL TYPES DESCRIBED ON THIS SHEET. SEE SHEET A5.1 FOR TYPICAL EXTERIOR ALUMINUM WINDOW DETAILS. SEE SHEET A2.2 FOR VINYL CLAD WOOD WINDOW DETAILS