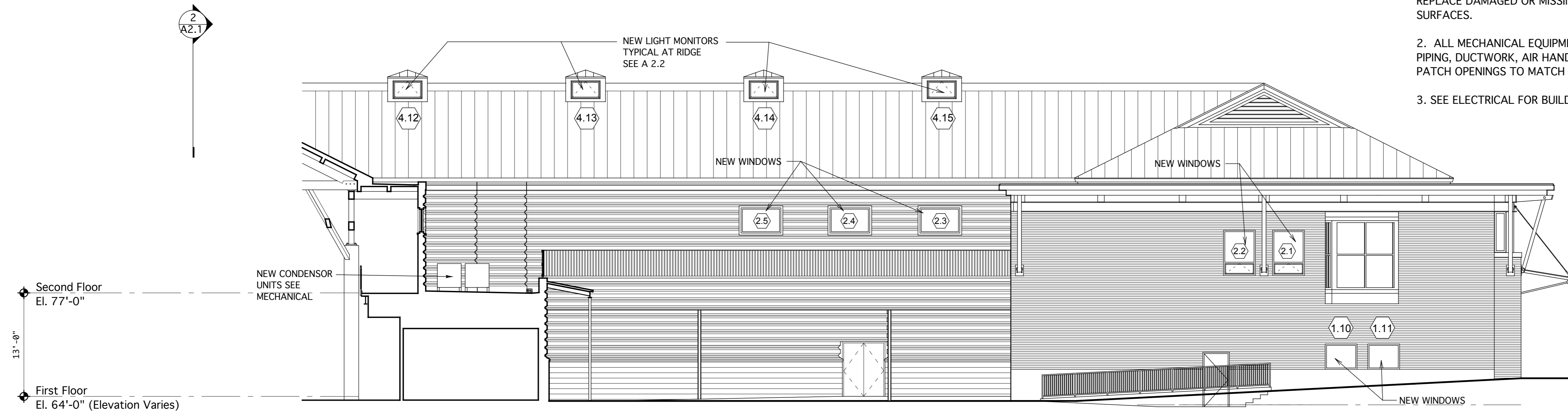


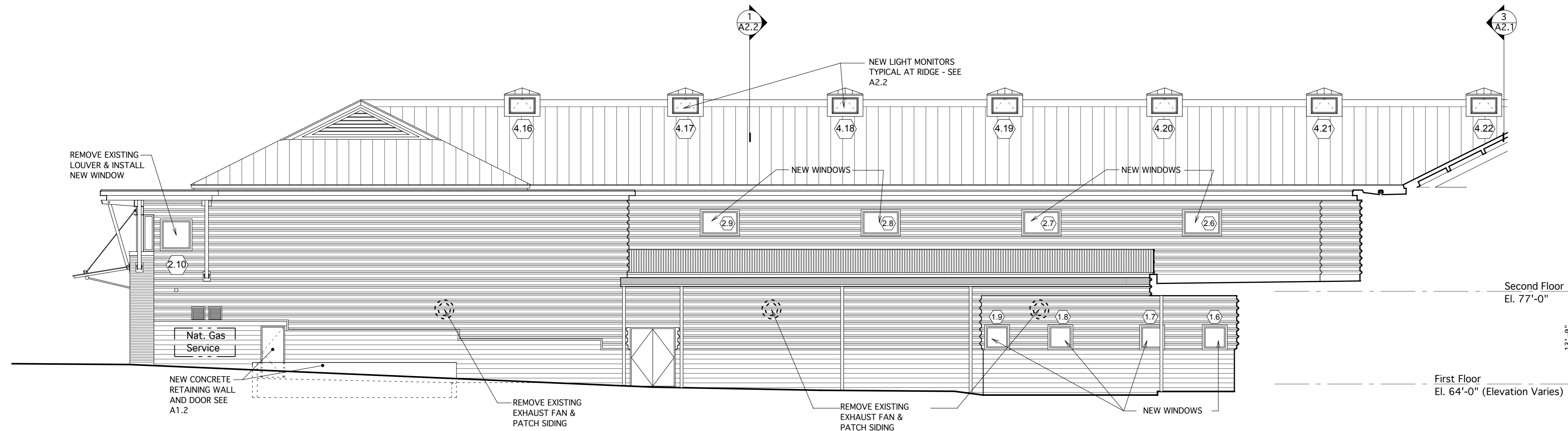
**POWERPAY
OFFICE FIT UP**

GENERAL NOTES:

1. POWER WASH ALL EXTERIOR SURFACES EXCEPT ROOF. REMOVE GRAFFITI, AND REPLACE DAMAGED OR MISSING BIRD PERCH PREVENTION SPIKES AT HORIZONTAL SURFACES.
2. ALL MECHANICAL EQUIPMENT INCLUDING THROUGH WALL VENTS, EXHAUST HOODS, PIPING, DUCTWORK, AIR HANDLERS NOT SCHEDULED FOR RE-USE ARE TO BE REMOVED. PATCH OPENINGS TO MATCH ADJACENT WALL/ROOF SYSTEMS.
3. SEE ELECTRICAL FOR BUILDING MNTD. LIGHTING.



SERVICE DRIVE NORTH ELEVATION



SERVICE DRIVE WEST ELEVATION

**Winton Scott
Architects**
5 Milk Street
Portland, ME 04101

**Wright Ryan
Construction, Inc.**
10 Danforth Street
Portland, ME 04101

**Becker Structural
Engineers, Inc.**
75 York Street
Portland, Maine 04101

**Mechanical
Systems
Engineers**
10 Royal River Center
Yarmouth, Maine 04096

Bartlett Design
942 Washington Ave.
Bath, Maine 04530

Fore Solutions
386 Fore Street
Portland, Maine 04101

**BUILDING
ELEVATIONS**

A3.2