

POWERPAY OFFICE FIT UP

**Winton Scott
Architects**
5 Milk Street
Portland, ME 04101

**Wright Ryan
Construction, Inc.**
10 Danforth Street
Portland, ME 04101

**Becker Structural
Engineers, Inc.**
75 York Street
Portland, Maine 04101

**Mechanical
Systems
Engineers**
10 Royal River Center
Yarmouth, Maine 04096

Bartlett Design
942 Washington Ave.
Bath, Maine 04530

Fore Solutions
386 Fore Street
Portland, Maine 04101

SECOND FLOOR
PLAN

A1.2

Scale: 3/32" = 1'-0" Date: 3.20.09

POPULATION BREAK DOWN:

| FIRST FLOOR | |
|-------------------|-----|
| Executive Offices | 0 |
| Manager Offices | 11 |
| Guest Offices | 0 |
| Work Stations | 124 |

TOTAL 135

| SECOND FLOOR | |
|-------------------|----|
| Executive Offices | 7 |
| Manager Offices | 7 |
| Guest Offices | 5 |
| Work Stations | 82 |

TOTAL 101

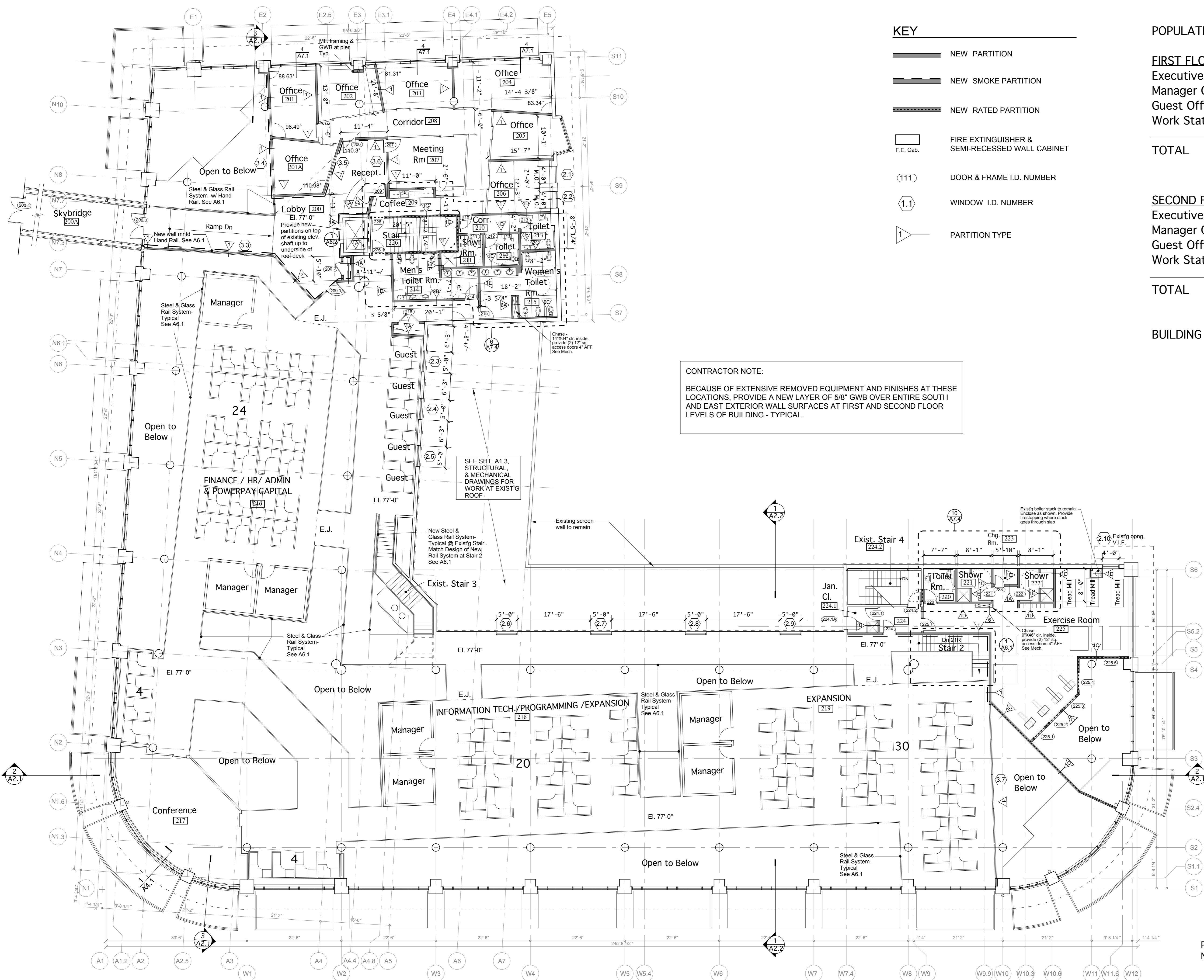
BUILDING TOTAL: 236

KEY

- NEW PARTITION
- NEW SMOKE PARTITION
- NEW RATED PARTITION
- FIRE EXTINGUISHER & SEMI-RECESSED WALL CABINET
- DOOR & FRAME I.D. NUMBER
- WINDOW I.D. NUMBER
- PARTITION TYPE

CONTRACTOR NOTE:

BECAUSE OF EXTENSIVE REMOVED EQUIPMENT AND FINISHES AT THESE LOCATIONS, PROVIDE A NEW LAYER OF 5/8" GWB OVER ENTIRE SOUTH AND EAST EXTERIOR WALL SURFACES AT FIRST AND SECOND FLOOR LEVELS OF BUILDING - TYPICAL.



PROJECT
NORTH

