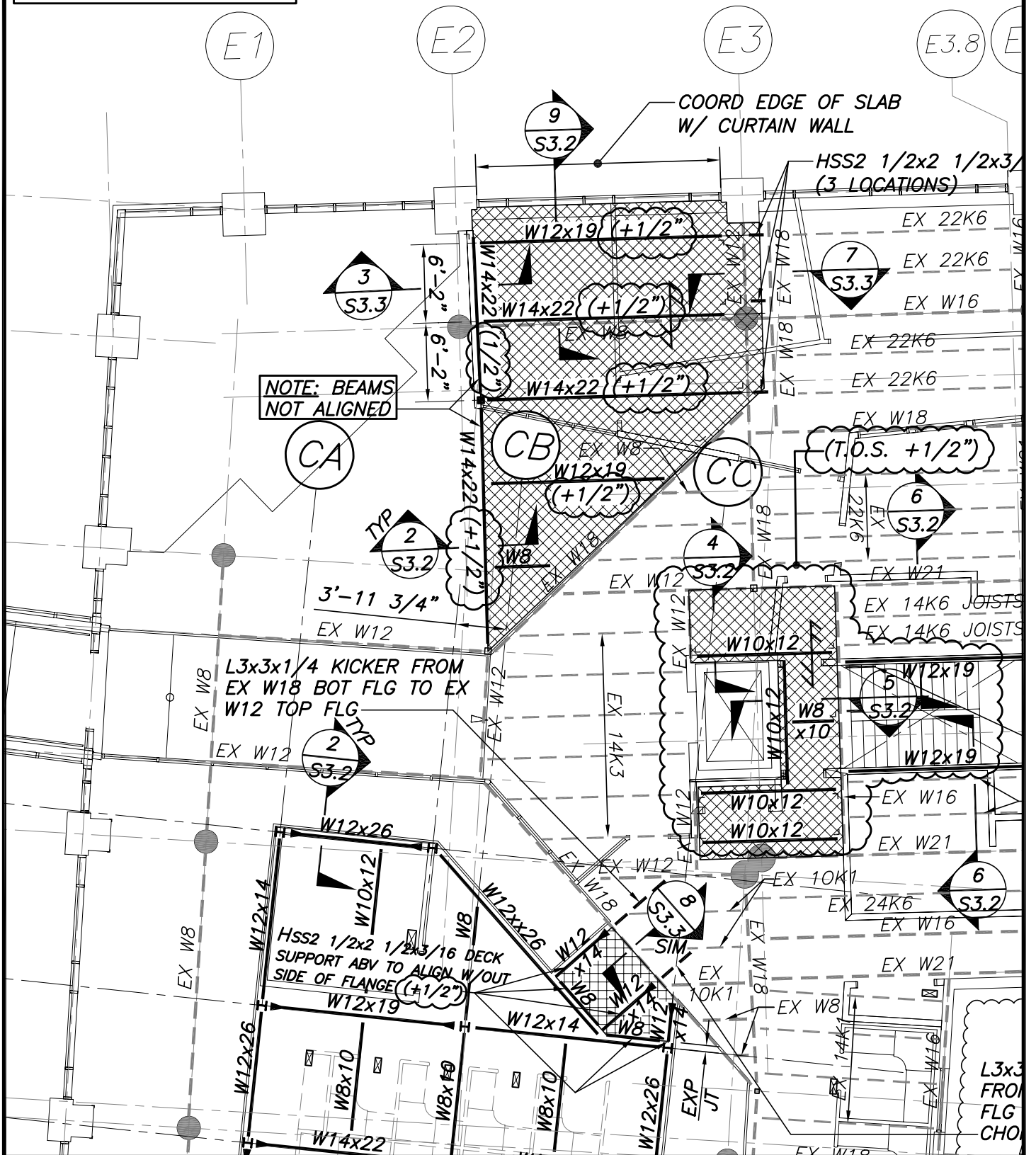


REFER TO DWG S1.2



BECKER
structural engineers, inc.

75 York Street
Portland, ME 04101-4701
info@beckerstructural.com

Tel 207-879-1838
Fax 207-879-1822
www.beckerstructural.com

Designed	NRM
Drawn	NRM
Checked	PBB
Scale	AS NOTED
Date	4/13/09

POWERPAY OFFICE
PORTLAND, ME

Becker Job Number
2036

SKS-1