

**POWERPAY
OFFICE FIT
UP**

**Winton Scott
Architects
5 Milk Street
Portland, ME 04101**

**Wright Ryan
Construction, Inc.
10 Danforth Street
Portland, ME 04101**

**Becker Structural
Engineers, Inc.
75 York Street
Portland, Maine 04101**

**Mechanical Systems
Engineers
10 Royal River Center
Yarmouth, Maine 04096**

**Bartlett Design
942 Washington St.
Bath, Maine 04530**

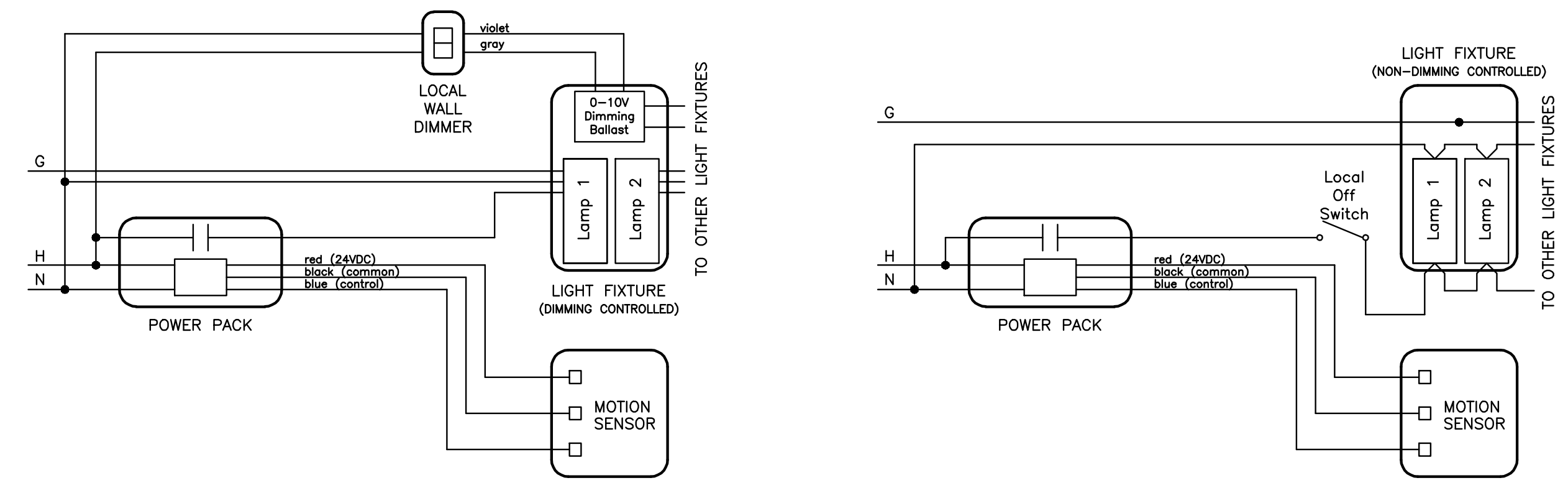
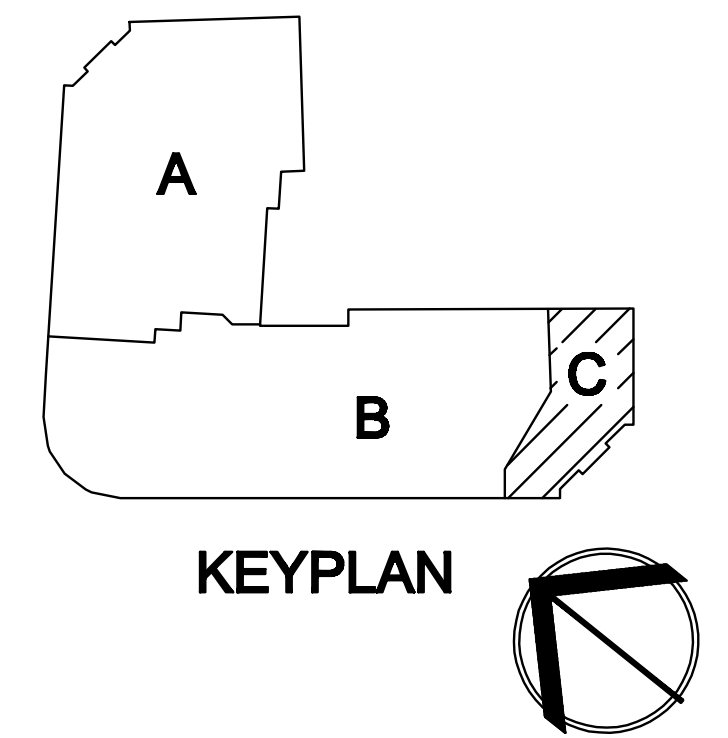
**Fore Solutions
386 Fore Street
Portland, Maine 04101**

**FIRST FLOOR
LIGHTING
PLAN-PART C**

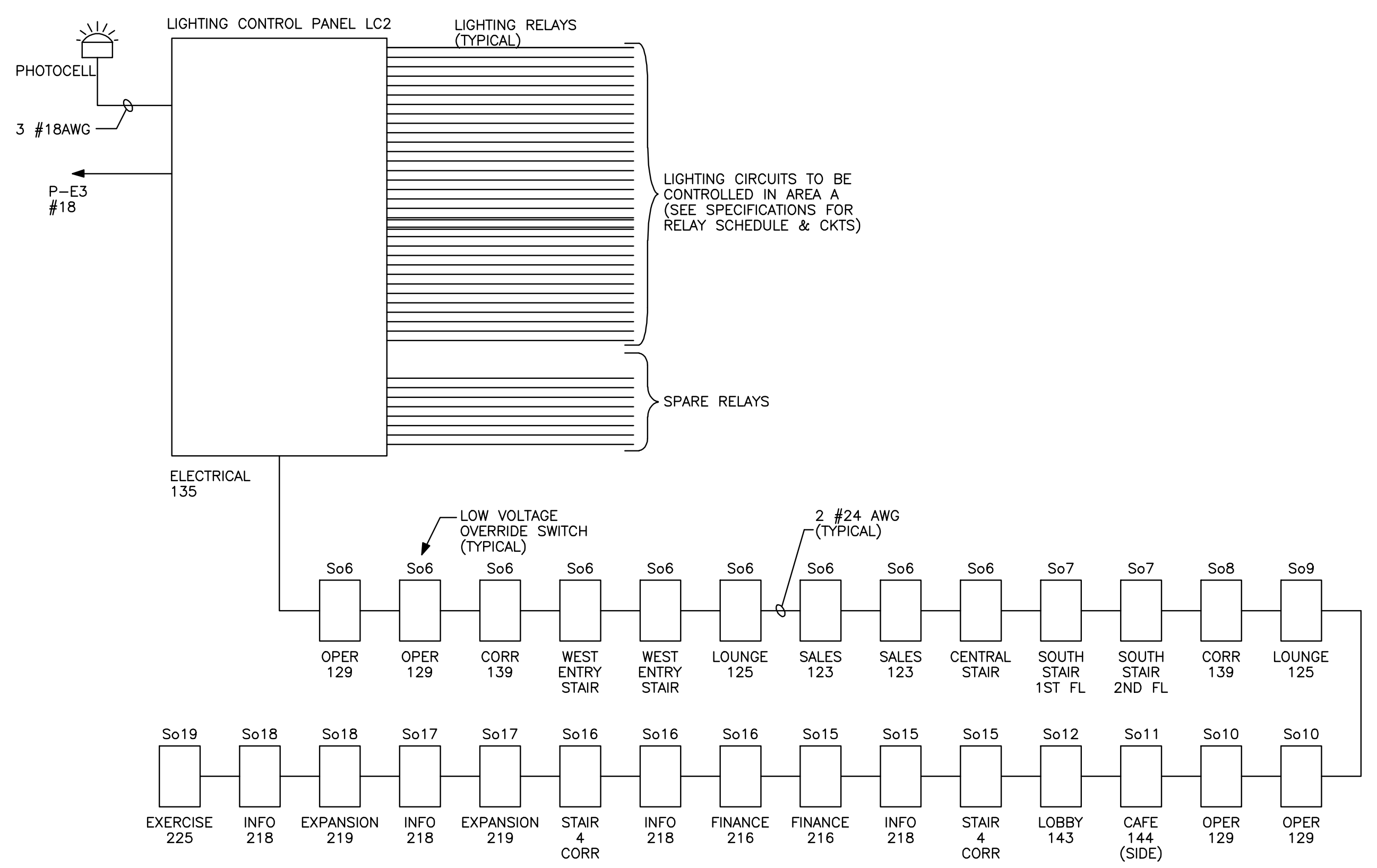
E2.3

Includes all revisions and changed up to and including 10-28-09

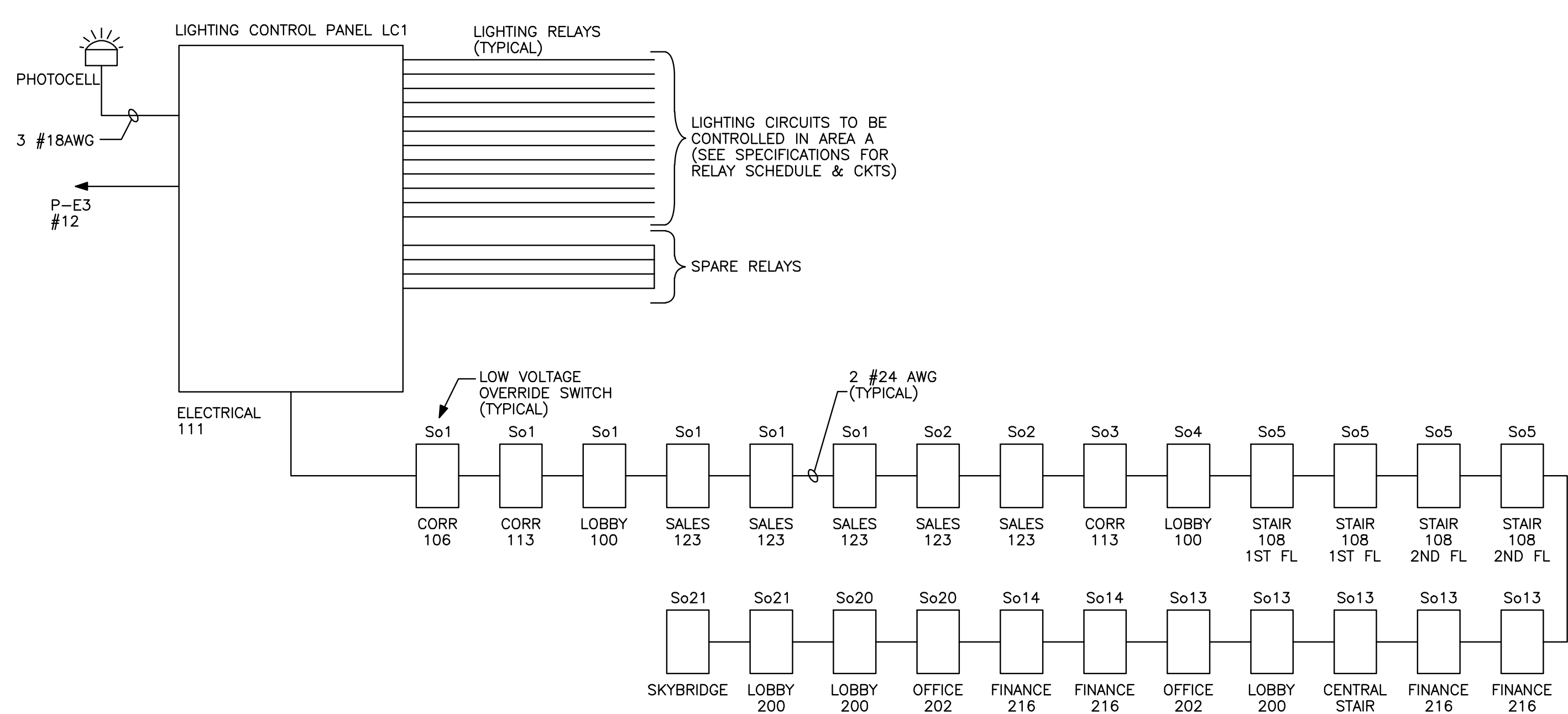
Scale: 1/8" = 1'-0" Date: 03-20-09



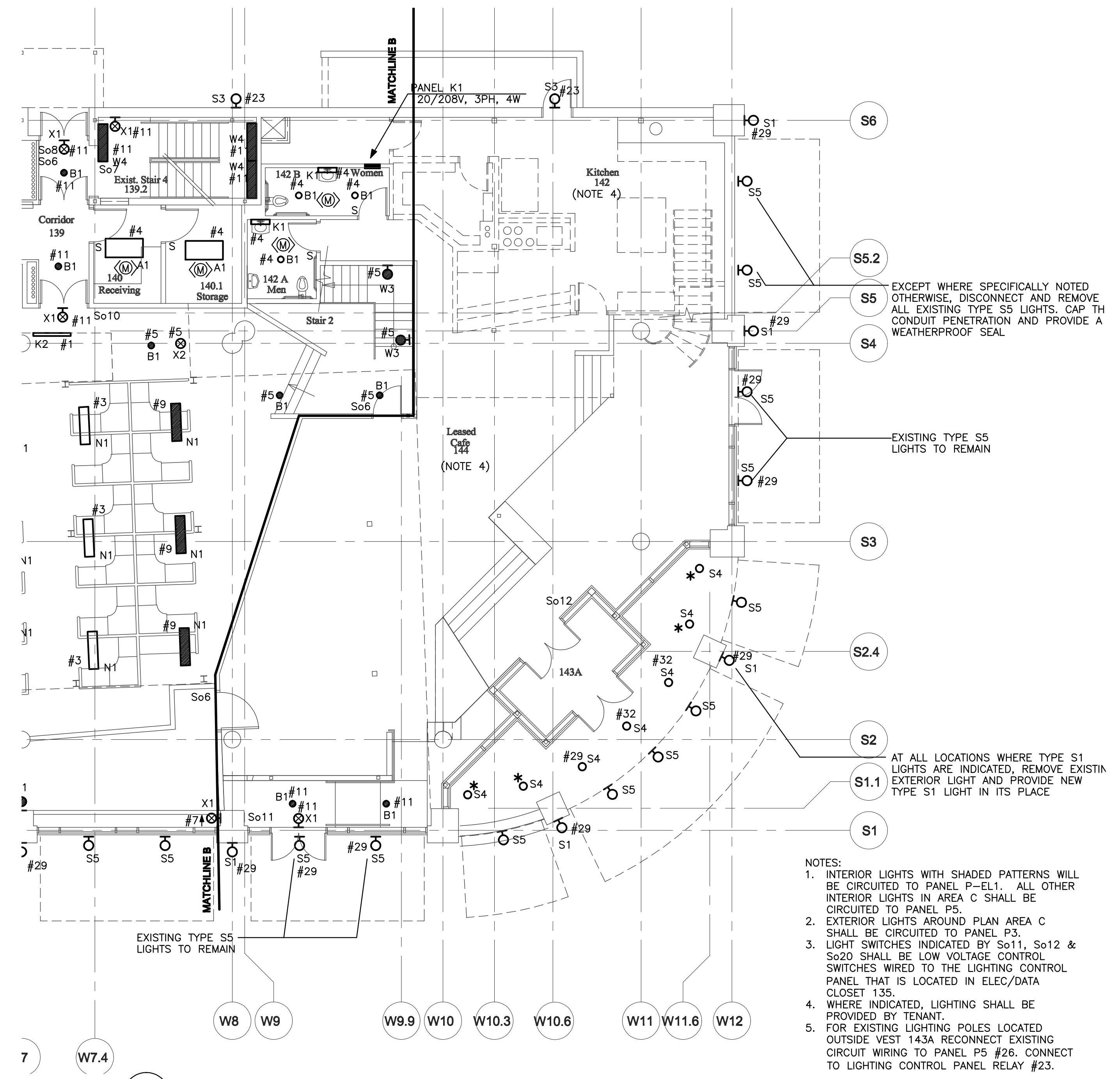
MOTION CONTROLLED LIGHTING CONTROL DIAGRAMS
NOT TO SCALE



NETWORKED LIGHTING CONTROL PANEL DIAGRAM
NOT TO SCALE



NETWORKED LIGHTING CONTROL PANEL DIAGRAM
NOT TO SCALE



1
E2.3 FIRST FLOOR LIGHTING PLAN - PART C
1/8" = 1'-0"

- NOTES:
- INTERIOR LIGHTS WITH SHADED PATTERNS WILL BE CIRCUITED TO PANEL P-EL1. ALL OTHER INTERIOR LIGHTS IN AREA C SHALL BE CIRCUITED TO PANEL P5.
 - EXTERIOR LIGHTS AROUND PLAN AREA C SHALL BE CIRCUITED TO PANEL P3.
 - LIGHT SWITCHES INDICATED BY So11, So12 & So20 SHALL BE LOW VOLTAGE CONTROL SWITCHES WIRED TO THE LIGHTING CONTROL PANEL THAT IS LOCATED IN ELEC/DATA CLOSET 135.
 - WHERE INDICATED, LIGHTING SHALL BE PROVIDED BY TENANT.
 - FOR EXISTING LIGHTING POLES LOCATED OUTSIDE VEST 143A RECONNECT EXISTING CIRCUIT WIRING TO PANEL P5 #26. CONNECT TO LIGHTING CONTROL PANEL RELAY #23.