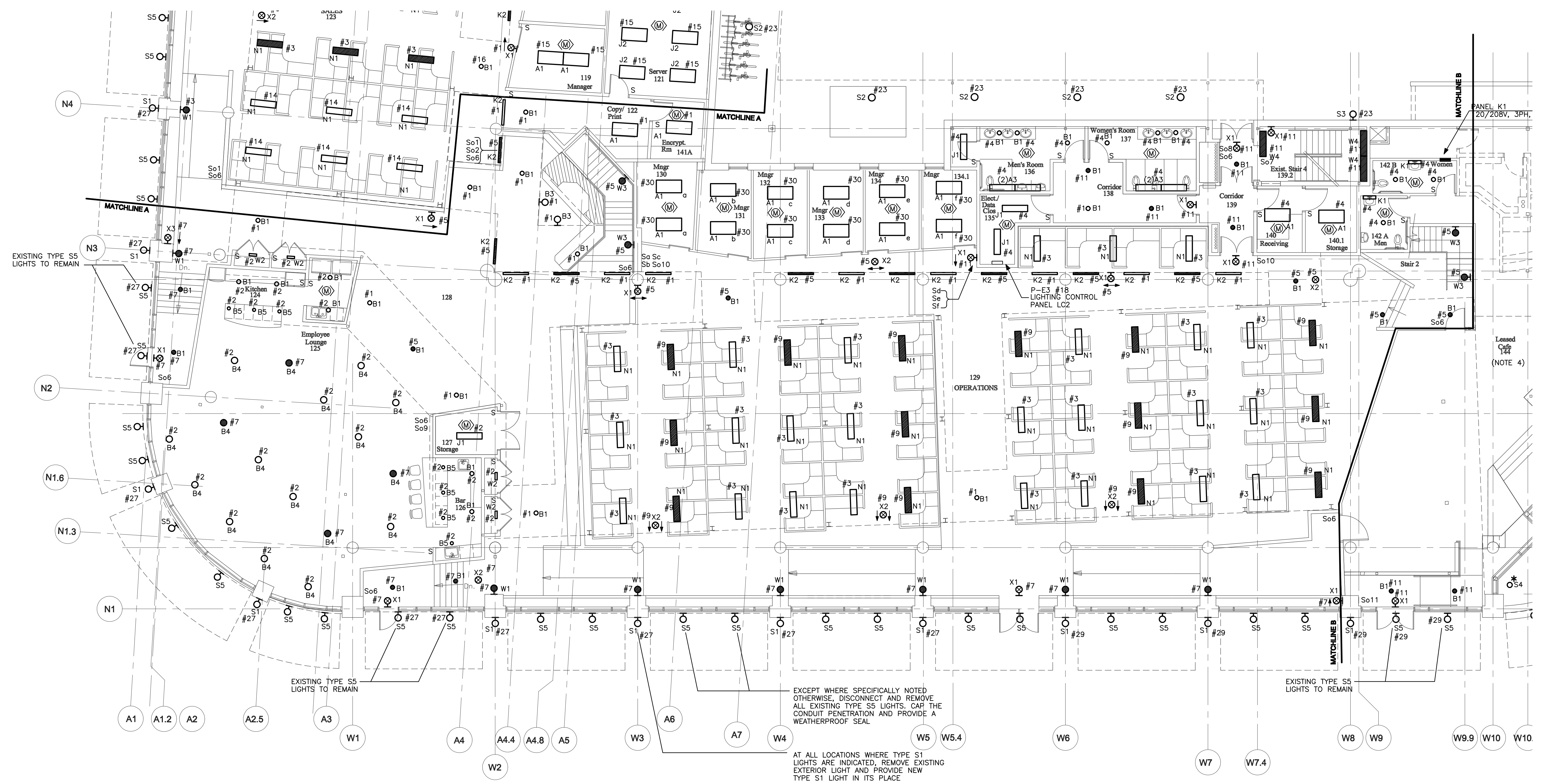


- PART B NOTES:**
- INTERIOR LIGHTS WITH SHADED PATTERNS SHALL BE CIRCUITED TO PANEL P-EL1. ALL OTHER INTERIOR LIGHTS IN AREA B SHALL BE CIRCUITED TO PANEL P1.
  - EXTERIOR LIGHTS AROUND PLAN AREA B SHALL BE CIRCUITED TO PANEL P5.
  - LIGHT SWITCHES INDICATED BY So6, So7, So8, So9, So10 SHALL BE LOW VOLTAGE CONTROL SWITCHES WIRED TO THE LIGHTING CONTROL PANEL THAT IS LOCATED IN ELEC/DATA CLOSET 135.



EXCEPT WHERE SPECIFICALLY NOTED OTHERWISE, DISCONNECT AND REMOVE ALL EXISTING TYPE S5 LIGHTS. CAP THE CONDUIT PENETRATION AND PROVIDE A WEATHERPROOF SEAL.

AT ALL LOCATIONS WHERE TYPE S1 LIGHTS ARE INDICATED, REMOVE EXISTING EXTERIOR LIGHT AND PROVIDE NEW TYPE S1 LIGHT IN ITS PLACE.

1 FIRST FLOOR LIGHTING PLAN - PART B  
E2.2 1/8" = 1'-0"

**POWERPAY  
OFFICE FIT  
UP**

**Winton Scott  
Architects**  
5 Milk Street  
Portland, ME 04101

**Wright Ryan  
Construction, Inc.**  
10 Danforth Street  
Portland, ME 04101

**Becker Structural  
Engineers, Inc.**  
75 York Street  
Portland, Maine 04101

**Mechanical Systems  
Engineers**  
10 Royal River Center  
Yarmouth, Maine 04096

**Bartlett Design**  
942 Washington St.  
Bath, Maine 04530

**Fore Solutions**  
386 Fore Street  
Portland, Maine 04101

**FIRST FLOOR  
LIGHTING  
PLAN-PART B**

**E2.2**

Includes all revisions and changed up to and including 10-28-09

Scale: 1/8" = 1'-0" Date: 03-20-09