

**POWERPAY  
OFFICE FIT  
UP**

**Winton Scott  
Architects  
5 Milk Street  
Portland, ME 04101**

**Wright Ryan  
Construction, Inc.  
10 Danforth Street  
Portland, ME 04101**

**Becker Structural  
Engineers, Inc.  
75 York Street  
Portland, Maine 04101**

**Mechanical Systems  
Engineers  
10 Royal River Center  
Yarmouth, Maine 04096**

**Bartlett Design  
942 Washington St.  
Bath, Maine 04530**

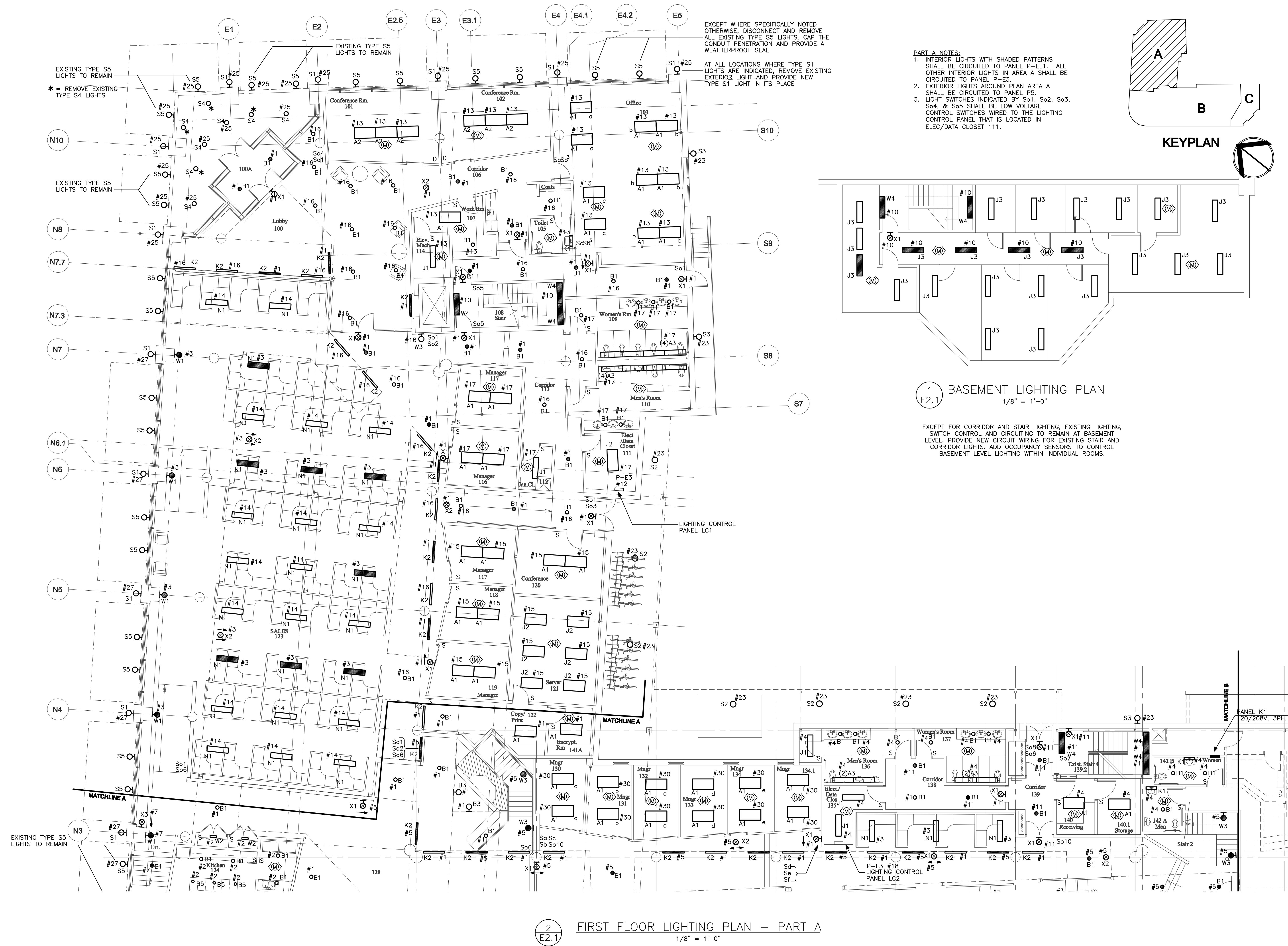
**Fore Solutions  
386 Fore Street  
Portland, Maine 04101**

**FIRST FLOOR  
LIGHTING  
PLAN-PART A**

**E2.1**

Include all revisions and changed up  
to and including 10-28-09

Scale: 1/8" = 1'-0" Date: 03-20-09



- PART A NOTES:**
1. INTERIOR LIGHTS WITH SHADED PATTERNS SHALL BE CIRCUITED TO PANEL P-E1. ALL OTHER INTERIOR LIGHTS IN AREA A SHALL BE CIRCUITED TO PANEL P-E3.
  2. EXTERIOR LIGHTS AROUND PLAN AREA A SHALL BE CIRCUITED TO PANEL P5.
  3. LIGHT SWITCHES INDICATED BY So1, So2, So3, So4, & So5 SHALL BE LOW VOLTAGE CONTROL SWITCHES WIRED TO THE LIGHTING CONTROL PANEL THAT IS LOCATED IN ELEC/DATA CLOSET 111.

**1 BASEMENT LIGHTING PLAN  
E2.1  
1/8" = 1'-0"**

EXCEPT FOR CORRIDOR AND STAIR LIGHTING, EXISTING LIGHTING, SWITCH CONTROL AND CIRCUITING TO REMAIN AT BASEMENT LEVEL. PROVIDE NEW CIRCUIT WIRING FOR EXISTING STAIR AND CORRIDOR LIGHTS. ADD OCCUPANCY SENSORS TO CONTROL BASEMENT LEVEL LIGHTING WITHIN INDIVIDUAL ROOMS.

**2 FIRST FLOOR LIGHTING PLAN - PART A  
E2.1  
1/8" = 1'-0"**