

POWERPAY OFFICE FIT UP

Winton Scott
Architects
5 Milk Street
Portland, ME 04101

Wright Ryan
Construction, Inc.
10 Danforth Street
Portland, ME 04101

Becker Structural
Engineers, Inc.
75 York Street
Portland, Maine 04101

Mechanical Systems
Engineers
10 Royal River Center
Yarmouth, Maine 04096

Bartlett Design
942 Washington St.
Bath, Maine 04530

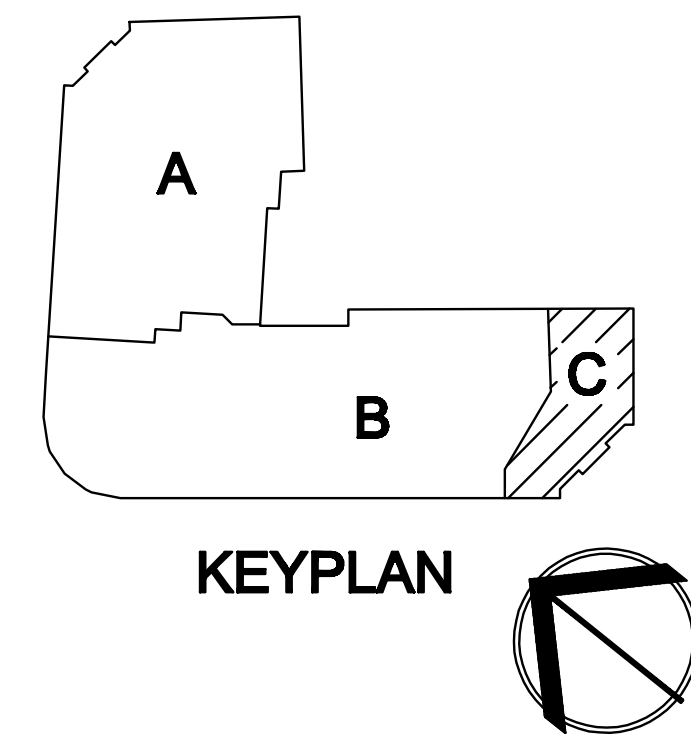
Fore Solutions
386 Fore Street
Portland, Maine 04101

FIRST FLOOR POWER PLAN-PART C

E1.3

Includes all revisions and changed up
to and including 10-28-09

Scale: 1/8" = 1'-0" Date: 03-20-09



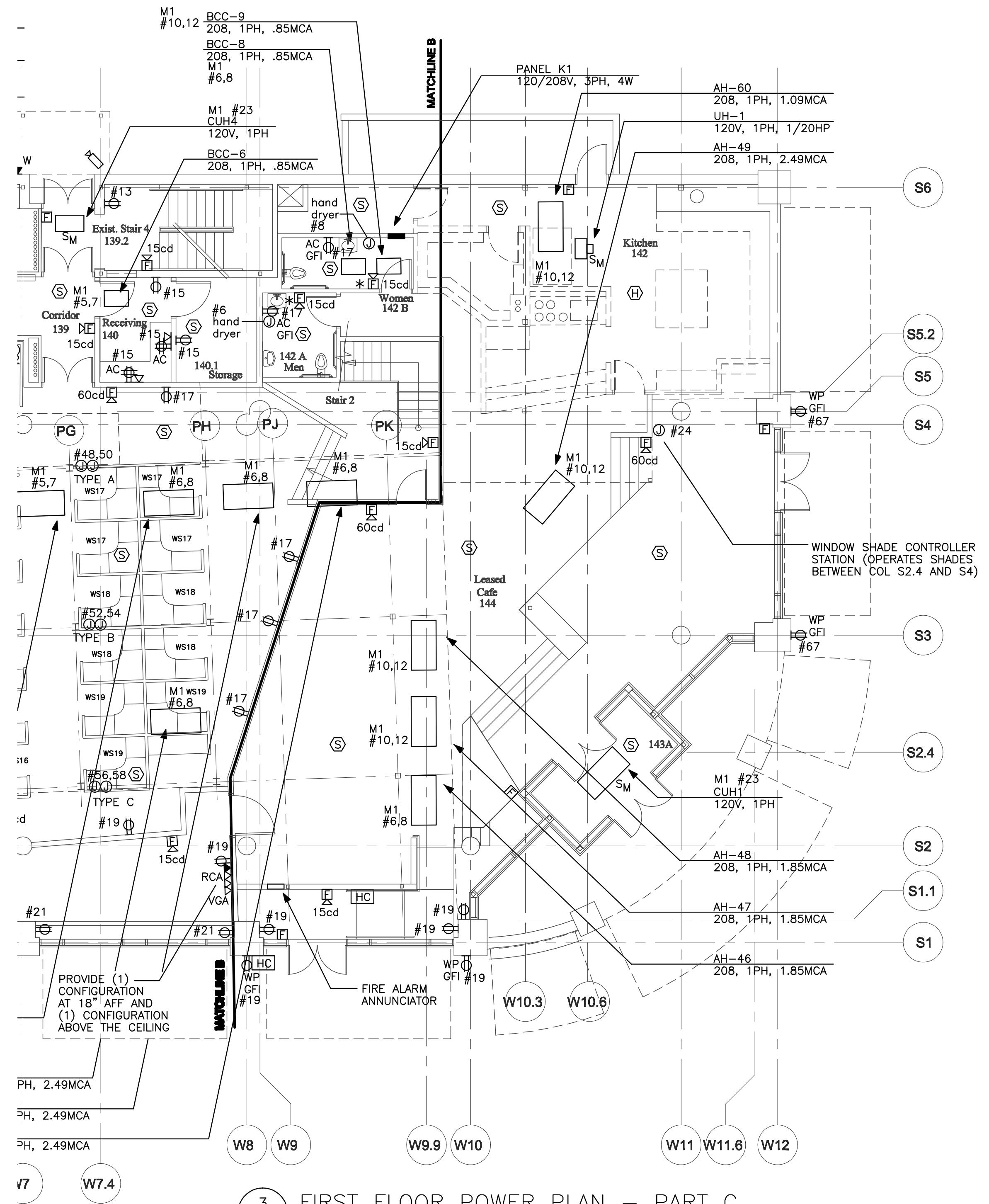
- NOTES:
1. CIRCUIT DESIGNATIONS LOCATED IN PLAN AREA C REFER TO PANEL P5.
 2. VOICE/DATA WIRING FROM OUTLETS SHALL BE EXTENDED TO NETWORK SWITCHES LOCATED IN THE CEILING SPACE BETWEEN THE FIRST FLOOR AND THE MEZZANINE. NETWORK SWITCHES TO BE PROVIDED BY OWNER'S CONSULTANT. COORDINATE AS REQUIRED.
 3. NOT USED.
 4. SEE SHEET E1.1 FOR FURNITURE PARTITION WIRING KEY.
 5. PROVIDE A 30A/2P UNFUSED DISCONNECT SWITCH AT ALL AH UNITS AND AT ALL BCC UNITS.

WORK BEING PROVIDED
BY OTHERS

1 E1.3 1ST FL DATA NETWORK SWITCH COVERAGE AREA
NOT TO SCALE

WORK BEING PROVIDED
BY OTHERS

2 E1.3 2ND FL DATA NETWORK SWITCH COVERAGE AREA
NOT TO SCALE



3 E1.3 FIRST FLOOR POWER PLAN - PART C
1/8" = 1'-0"