

# POWERPAY OFFICE FIT UP

Winton Scott Architects  
5 Milk Street  
Portland, ME 04101

Wright Ryan Construction, Inc.  
10 Danforth Street  
Portland, ME 04101

Becker Structural Engineers, Inc.  
75 York Street  
Portland, Maine 04101

Mechanical Systems Engineers  
10 Royal River Center  
Yarmouth, Maine 04096

Bartlett Design  
942 Washington St.  
Bath, Maine 04530

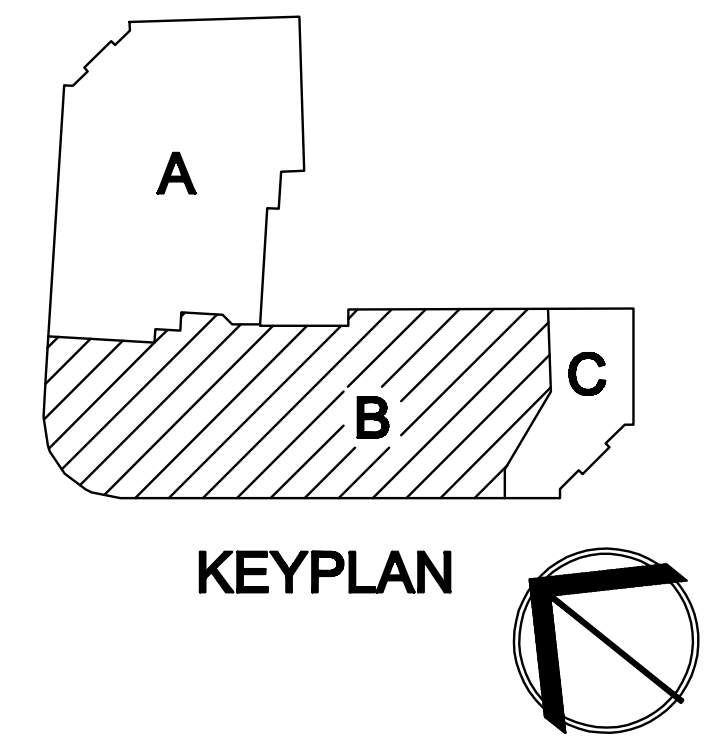
Fore Solutions  
386 Fore Street  
Portland, Maine 04101

## FIRST FLOOR POWER PLAN-PART B

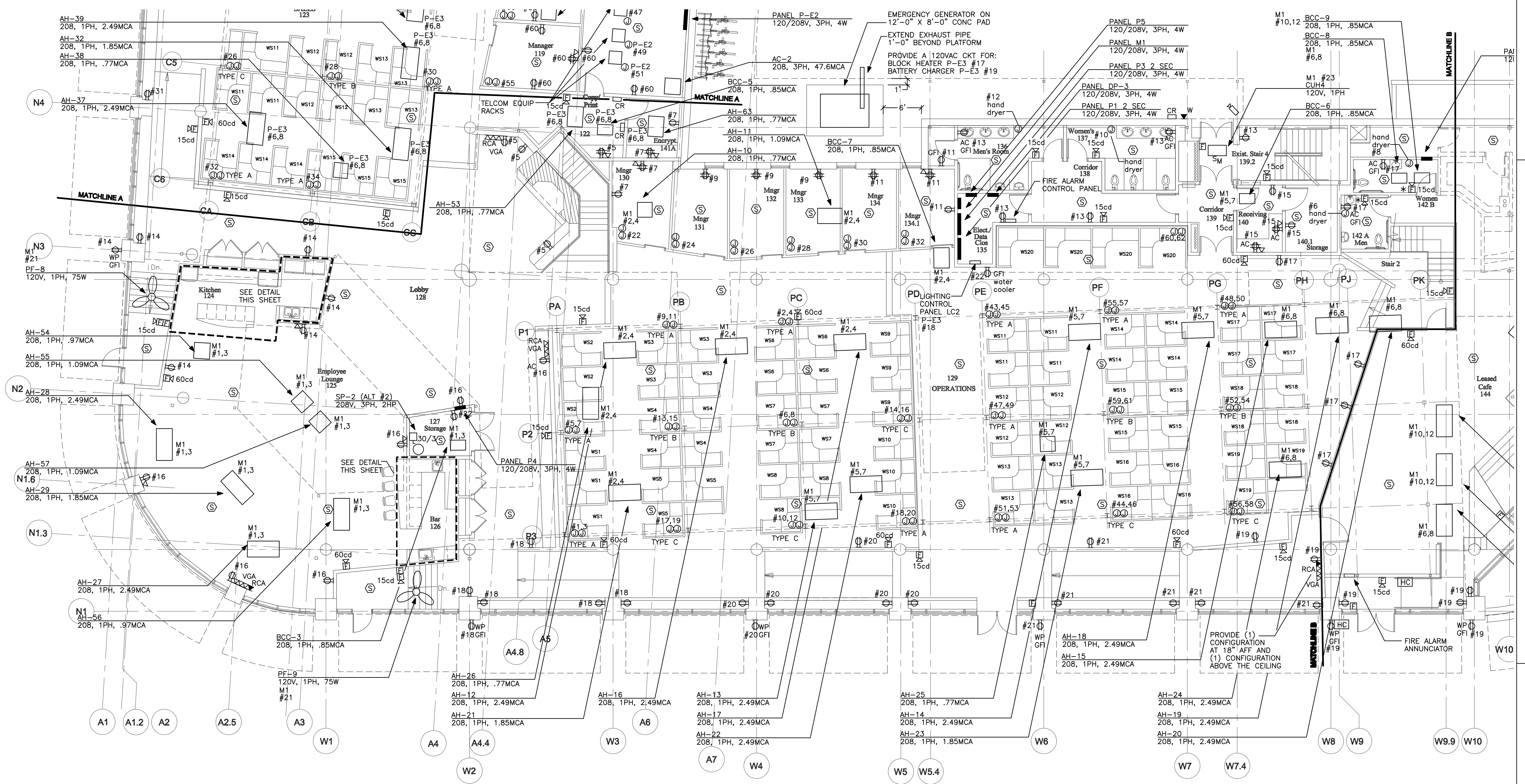
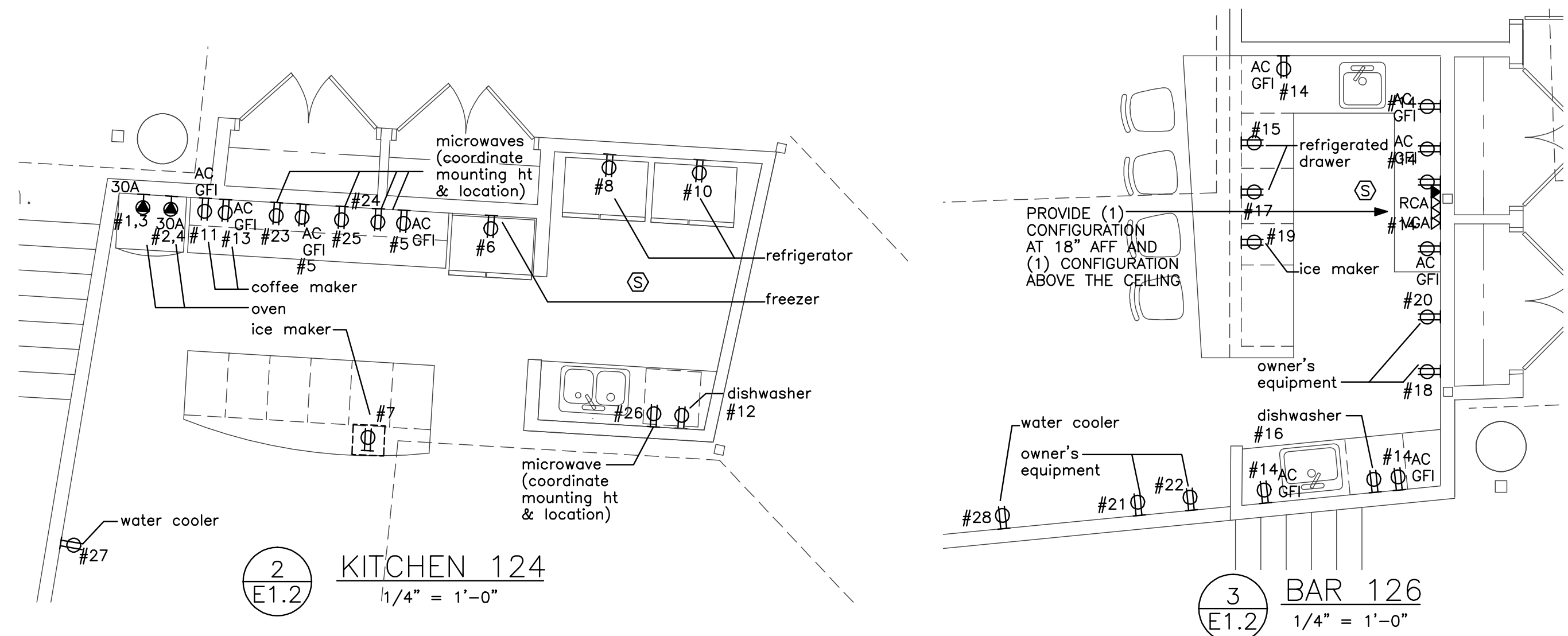
# E1.2

Include all revisions and changed up to and including 10-28-09

Scale: 1/8" = 1'-0" Date: 03-20-09



- NOTES:
1. CIRCUIT DESIGNATIONS LOCATED IN PLAN AREA B REFER TO PANEL P5.
  2. VOICE/DATA WIRING FROM OUTLETS SHALL BE EXTENDED TO NETWORK SWITCHES LOCATED IN THE CEILING SPACE BETWEEN THE FIRST FLOOR AND THE MEZZANINE. NETWORK SWITCHES TO BE PROVIDED BY OWNER'S CONSULTANT. COORDINATE AS REQUIRED.
  3. WORKSTATIONS AND MODULAR PARTITIONS IN AREA B SHALL BE CIRCUITED TO PANEL P1.
  4. SEE SHEET E1.1 FOR FURNITURE PARTITION WIRING KEY.
  5. PROVIDE A 30A/2P UNFUSED DISCONNECT SWITCH AT ALL AH UNITS AND AT ALL BCC UNITS.
  6. CIRCUIT DESIGNATIONS IN KITCHEN 124 AND BAR 126 IN AREA B REFER TO PANEL P4.



**1** FIRST FLOOR POWER PLAN - PART B  
1/8" = 1'-0"