



**POWERPAY
OFFICE FIT UP**

**Winton Scott
Architects**
5 Milk Street
Portland, ME 04101

**Wright Ryan
Construction, Inc.**
10 Danforth Street
Portland, ME 04101

**Becker Structural
Engineers, Inc.**
75 York Street
Portland, Maine 04101

**Mechanical
Systems
Engineers**
10 Royal River Center
Yarmouth, Maine 04096

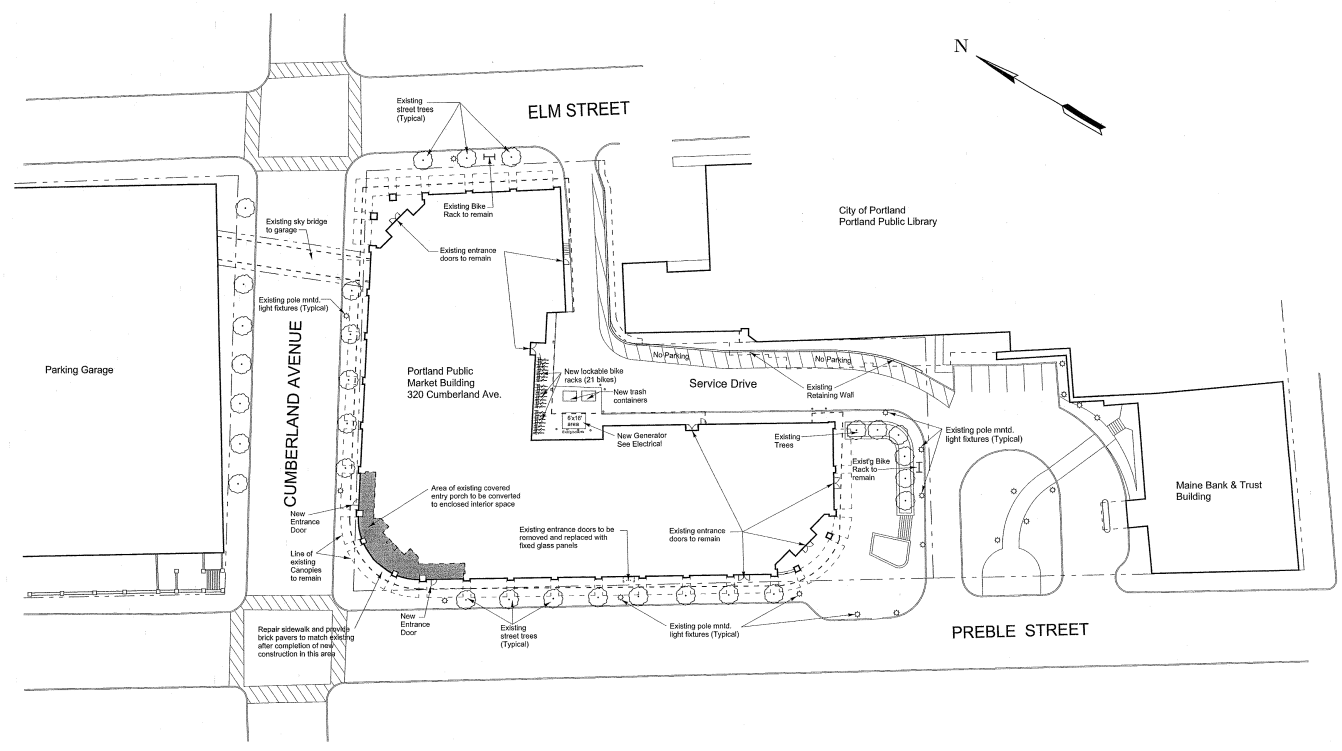
Bartlett Design
942 Washington Ave.
Bath, Maine 04530

Fore Solutions
386 Fore Street
Portland, Maine 04101

SITE PLAN

L1.1

Scale: 1" = 30'-0" Date: 3.20.09



SITE PLAN BASED ON SURVEY TITLED: "PLAN OF LAND ON CUMBERLAND AVENUE, PREBLE STREET & ELM STREET PORTLAND, MAINE MADE FOR WINTON SCOTT ARCHITECTS" DATED FEBRUARY 10, 2009 AND PREPARED BY OWEN HASKELL, INC.