

**OCCUPANT LOAD**

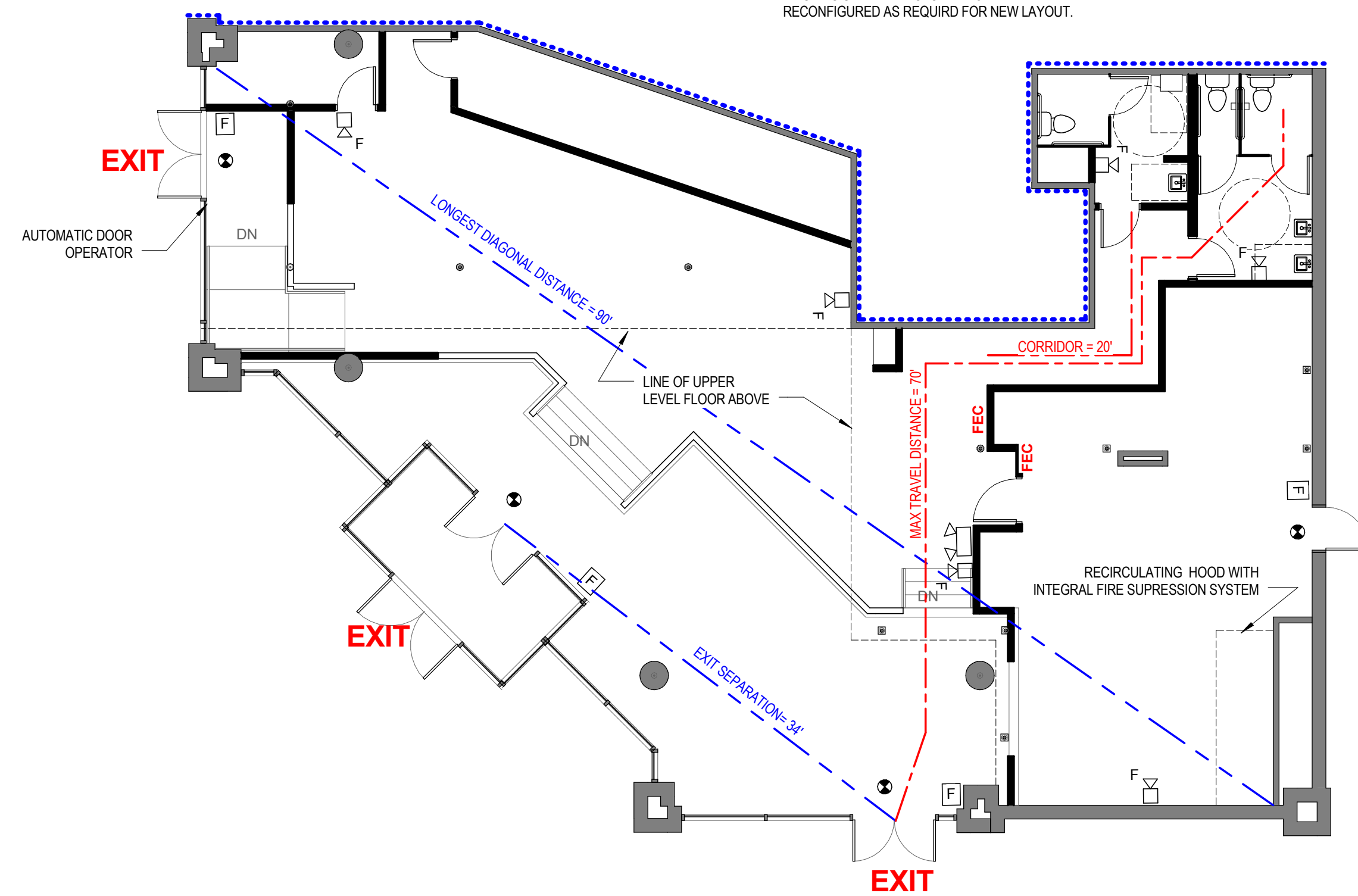
BAR	275 S.F./15 =	55
DINING	480 S.F./15 =	32
FROZEN-TO GO	095 S.F./100 =	01
KITCHEN	680 S.F./200 =	04
OFFICE	054 S.F./100 =	01
SERVERY	320 S.F./200 =	02
<b>TOTAL OCCUPANT LOAD</b>		<b>95</b>



- BAR
- COOLER
- DINING
- FROZEN TO-GO
- KITCHEN
- OFFICE
- SERVERY

4 AREA PLAN  
1/8" = 1'-0"

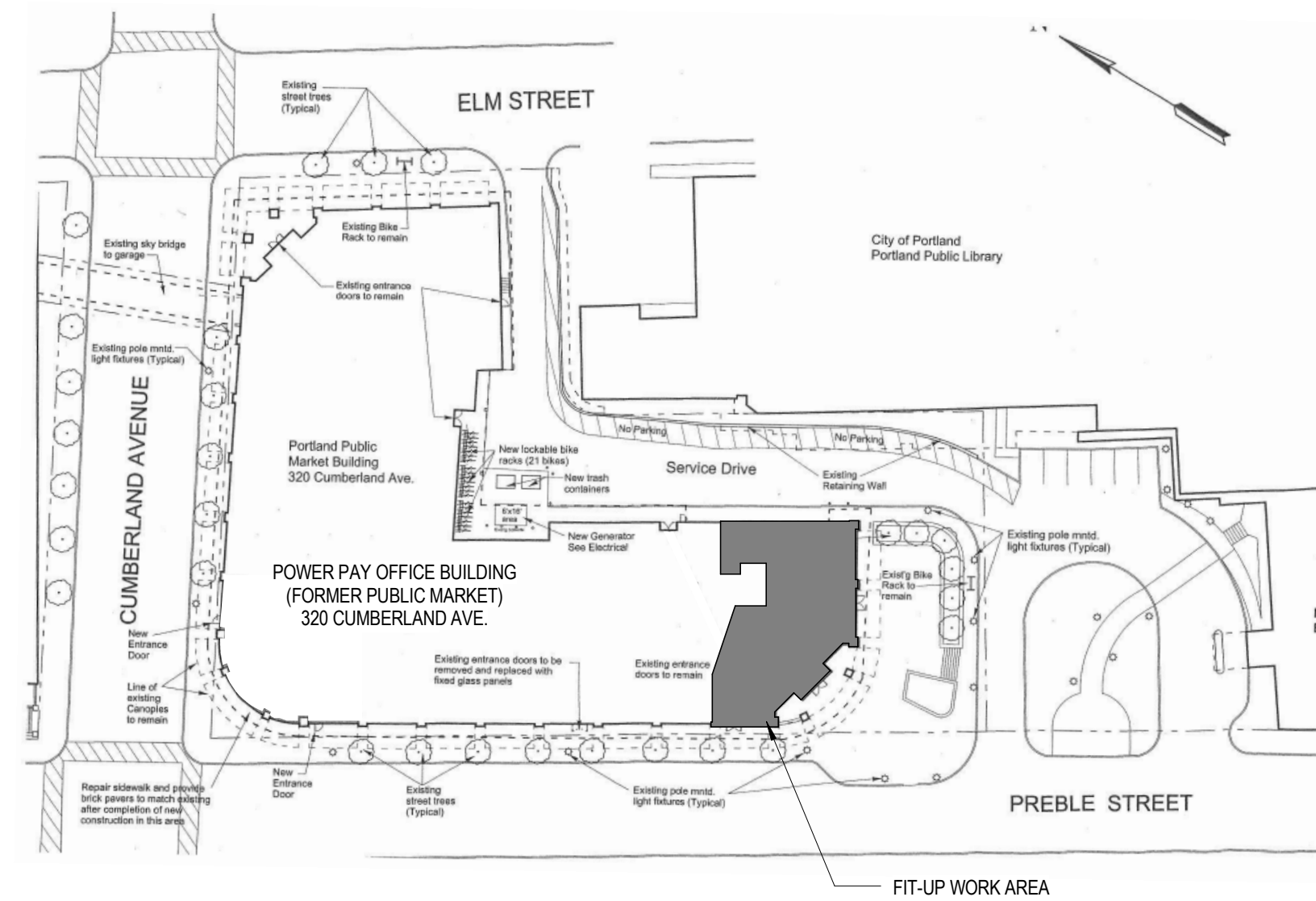
- LIFE SAFETY PLAN NOTES**
- SELECT EGRESS PATH LIGHT FIXTURES ON EMERGENCY GENERATOR CIRCUIT EL-1
  - EXISTING UPPER LEVEL WALLS 1 HOUR RATED, INCLUDING FIRE RATED GLAZING AND WATER IMPINGING GLAZING.
  - EXISTING SPRINKLER SYSTEM TO BE RECONFIGURED AS REQUIRED FOR NEW LAYOUT.



5 LIFE SAFETY PLAN  
1/8" = 1'-0"

- LIFE SAFETY LEGEND**
- EXIT Exit Discharge
  - E Exit Access
  - FEC Fire Extinguisher Cabinets
  - 30 Min. Rated Fire Partition
  - One Hour Rated Fire Partition
  - Two Hour Rated Fire Barrier
  - Dead End Corridors and Common Path of Travel
  - Maximum Diagonal Distance
  - ⊙ Exit Sign
  - ⊙ Emergency Light
  - ⊙ Fire Alarm Horn/Strobe
  - ⊙ Fire Alarm Pull Station

3 LIFE SAFETY LEGEND



2 SITE PLAN  
1" = 60'-0"

**PROJECT DESCRIPTION**

PARTIAL FIT-UP OF 1ST FLOOR OF EXISTING 2 STORY TYPE IV BUILDING FOR USE AS PIZZA RESTAURANT.  
 NEW TOILET RMS, KITCHEN EQUIPMENT, BAR, AND SEATING TO BE PROVIDED.  
 TOTAL FIT-UP AREA +/- 3,200 S.F.

**CODE SUMMARY**

CONSTRUCTION TYPE	IV HEAVY TIMBER
USE GROUP	MIXED USE/SEPARATED ASSEMBLY A-2
TENANT USE	NO
CHANGE OF USE	NO
SPRINKLERED	YES
OCCUPANT LOAD >49	2 EXITS REQUIRED
COMMON PATH OF TRAVEL	75' MAX < 50 OCCUPANTS
EXIT SEPARATION	1/3 DIAGONAL DISTANCE
EXIT ACCESS TRAVEL	250' MAX
DEAD END CORRIDOR	20' MAX

1 CODE SUMMARY

THIS DRAWING IS THE PROPERTY OF CANAL 5 STUDIO AND IS NOT TO BE COPIED OR REPRODUCED IN PART OR WHOLE. 2013 © CANAL 5 STUDIO

Project Status  
**ISSUED FOR PERMIT**  
 November 26, 2013

Drawing Title  
**LIFE SAFETY PLAN**

Scale: As indicated

Drawing Number

**A01.1**