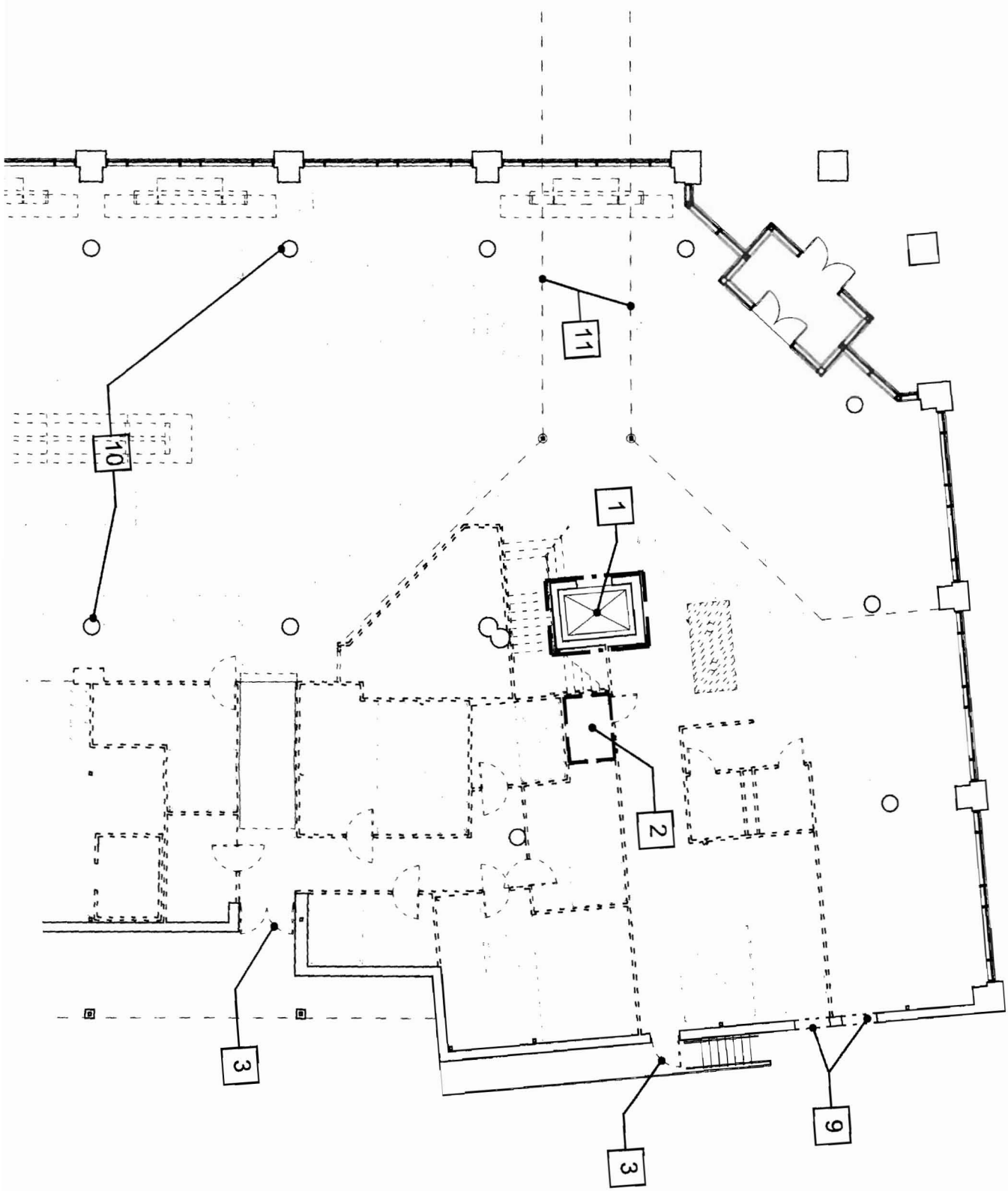


FIRST FLOOR DEMOLITION PLAN



10 Danforth Street
Portland, ME 04101

**Becker Structural
Engineers, Inc.**
75 York Street
Portland, Maine 04101

**Mechanical
Systems
Engineers**
10 Royal River Center
Yarmouth, Maine 04096

Bartlett Design
942 Washington Ave.
Bath, Maine 04530

Fore Solutions
386 Fore Street
Portland, Maine 04101

FIRST FLOOR
DEMOLITION
PLAN

D1.1

Scale: 1/16" = 1'-0"

Date: 3.4.09



GENERAL DEMOLITION NOTES

- A. EXTENT OF ALL DEMOLITION WORK WHETHER OR NOT SHOWN ON THIS PLAN SHALL BE COORDINATED WITH CONSTRUCTION MANAGER PRIOR TO START OF WORK.
- B. DO NOT UNDERTAKE ANY DEMOLITION WORK IN THE EXISTING BASEMENT AREA
- C. IN GENERAL, INTERIOR REMOVALS INCLUDE ALL INTERIOR PARTITIONS, CEILINGS, DOORS, FRAMES, FLOOR FINISHES, AND REMAINING FOOD SERVICE EQUIPMENT AND VENDOR DISPLAY COMPONENT.
- D. REMOVE ALL INTERIOR LIGHT FIXTURES AND SUPPORTING STRUCTURES.
- E. REMOVE ALL MECHANICAL EQUIPMENT AND DUCTWORK. REMOVAL OF MECHANICAL PIPING AND CONVECTORS SHALL BE COORDINATED WITH THE CONSTRUCTION MANAGER.
- F. COORDINATE SLAB REMOVALS AND TRENCHING WITH MECHANICAL DRAWINGS, STRUCTURAL DRAWINGS, SLAB PLAN, AND CONSTRUCTION MANAGER.

MAR - 9 2009

DEMOLITION KEY NOTES

1. EXISTING ELEVATOR SHAFT, CAB, CALL BUTTONS ETC. TO REMAIN. DECORATIVE WOOD SLATS ON SHAFT WALLS TO BE REMOVED.
2. EXISTING ELEVATOR MACHINE ROOM TO BE REMOVED. ALL EXISTING ELEVATOR EQUIPMENT TO BE SALVAGED AND PROTECTED FOR REINSTALLATION AT NEW LOCATION.
3. EXISTING DOOR AND FRAME TO BE REMOVED.
4. EXISTING STAIR, FIREPLACE, STONEMWORK, BENCH AND INTEGRATED PARTITIONS TO REMAIN
5. REMOVE EXISTING STOREFRONT GLAZING, VESTIBULES, DOORS, GRANITE STEPS, HANDRAILS, EXTERIOR SOFFITS, GRANITE CLADDING, PAVING, AND STRUCTURAL ELEMENTS IN PREPARATION FOR NEW CONSTRUCTION SCHEDULED FOR THIS LOCATION.
6. EXISTING CONCRETE RAMP TO REMAIN. ENCLOSING INTERIOR PARTITIONS TO BE REMOVED.
7. EXISTING TOILET ROOM AND FIXTURES TO REMAIN. SEE ARCHITECTURAL FOR EXTENT OF PARTITION REMOVAL REQUIRED TO FACILITATE ROOM RECONFIGURATION.
8. EXISTING STAIR, ENCLOSING WALLS, HANDRAILS FROM BASEMENT TO MEZZANINE LEVEL TO REMAIN.
9. REMOVE PORTION OF EXISTING EXTERIOR WALL ASSEMBLY IN PREPARATION FOR INSTALLATION OF NEW WINDOWS.
10. ALL EXISTING BUILDING STRUCTURAL ELEMENTS TO REMAIN EXCEPT WHERE SPECIFICALLY DESIGNATED TO BE REMOVED ON STRUCTURAL DRAWINGS.
11. REMOVE FINISH CEILING AT UNDERSIDE OF EXISTING RAMPED MEZZANINE COMPLETE.
12. EXISTING WINDOW SHADES WITH ELECTRIC OPERATORS ARE TO REMAIN FOR REUSE- DO NOT REMOVE
13. REMOVE EXISTING METAL RAIL SYSTEM WITH WOOD PANELS AND WOOD CAP RAIL.
14. SEE STRUCTURAL FOR EXTENT OF STRUCTURAL REMOVALS AT MEZZANINE

**POWERPAY
OFFICE FIT UP**

**Winton Scott
Architects**
5 Milk Street
Portland ME 04101