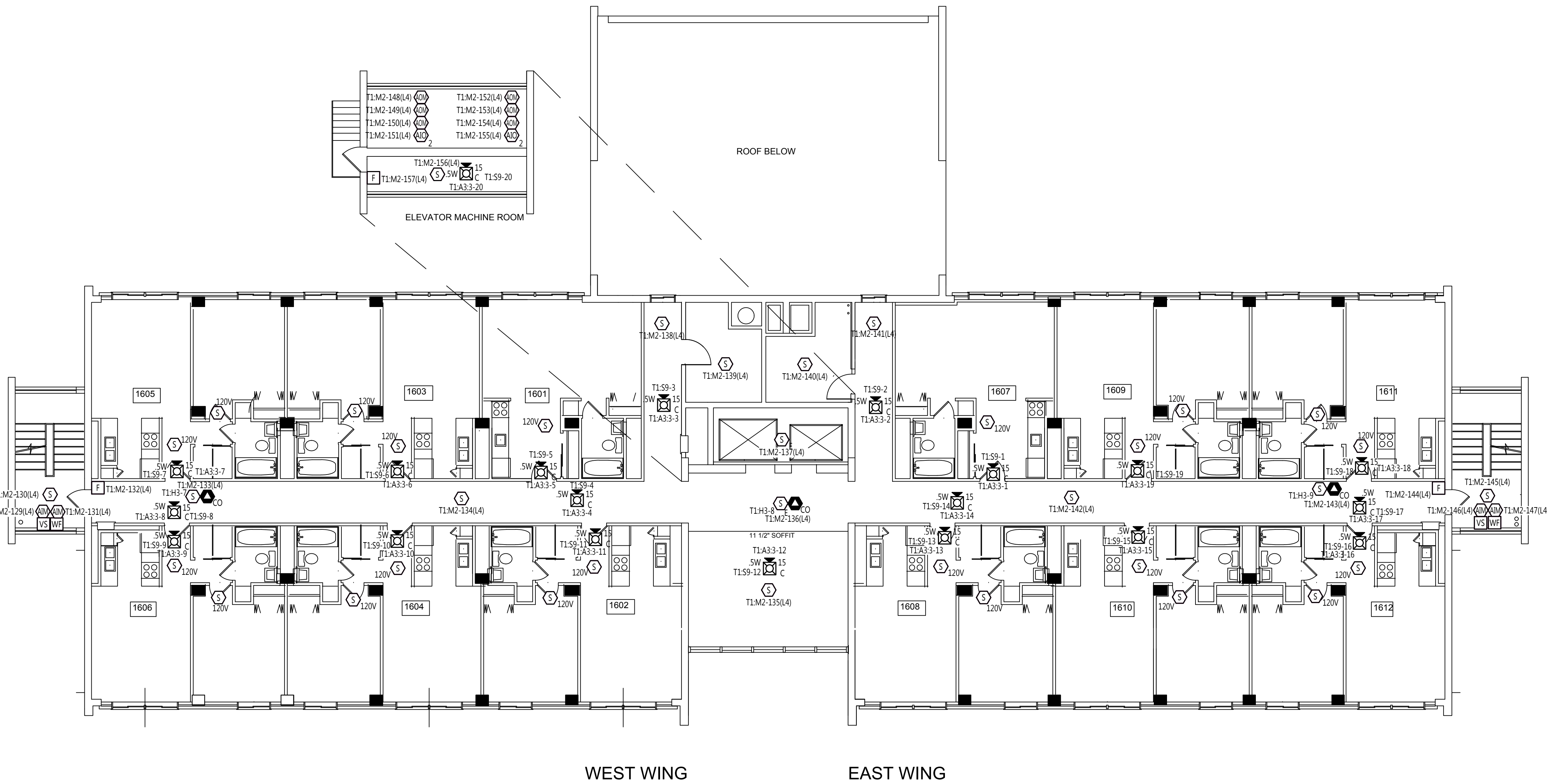


FILEPATH: Z:\CAD-Engineering - New\2011 & Newer\Value Projects\Franklin Towers (P160002801) VSG Draw\Original Drawg & Callout\FA-116.dwg

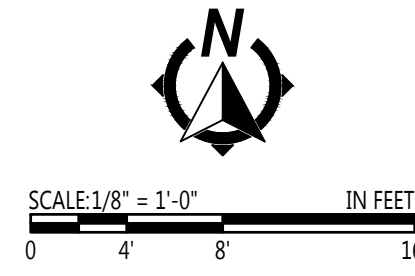
LAST SAVED BY: JDEDEACRUZ

LAST PRINTED: 1/23/2018 1:36:45 PM

24" x 36" - Arch D Size



**SIXTEENTH FLOOR DEVICE PLACEMENT PLAN**  
SCALE: 1/8" = 1'-0"



- GENERAL NOTES:**
1. ALL CEILINGS ARE ASSUMED TO BE 10' A.F.F. SMOOTH CONSTRUCTION UNLESS NOTED OTHERWISE.
  2. TAP ALL SPEAKERS AT 0.5W UNLESS NOTED OTHERWISE.
  3. SET ALL SPEAKER VOLTAGE JUMPERS TO THE 70.7V SETTING.
  4. ALL NOTIFICATION APPLIANCE CANDELA INTENSITY PLUGS SHALL RETAIN THEIR FACTORY SETTING OF "FACP" UNLESS OTHERWISE DIRECTED BY THE AUTHORITY HAVING JURISDICTION.
  5. DO NOT CHANGE DEFAULT APPLIANCE CONFIGURATION SWITCH SETTINGS ON ADDRESSABLE A/V DEVICES (FIG.1). REFER TO DEVICE DETAILS AND INSTALLATION INSTRUCTIONS FOR MORE INFORMATION.

**FIRE ALARM SYMBOL LEGEND**

SYMBOL	DESCRIPTION	BRAND	MODEL	BOX CODE	WIRE TYPE
<b>PANELS &amp; ANNUNCIATORS</b>					
[FACP]	4100ES FIRE ALARM CONTROL PANEL, 120 VAC	SIMPLEX	4100-9311	MFG	
[TPR]	4100ES TRANSPONDER FIRE ALARM LOCAL MODE TRANSPONDER PANEL, 120 VAC	SIMPLEX	4100-9601	MFG	
[FAA]	SERIAL LCD ANNUNCIATOR	SIMPLEX	4603-9101	6D B P	
[BATT]	BATTERY CABINET W/ 75AH BATTERY SET	SIMPLEX	2081-9280 PW-PS12750U	MFG	
<b>INITIATING DEVICES</b>					
[F]	SINGLE ACTION MANUAL PULL STATION	SIMPLEX	4099-9004	4G 1E	M
[S <sub>120V</sub> ]	LOCAL 120 VOLT SMOKE DETECTOR		SUPPLIED BY OTHERS		
[S]	ADDRESSABLE PHOTOELECTRIC SMOKE SENSOR WITH STANDARD BASE	SIMPLEX	4098-9714 HEAD 4098-9792 BASE	4K 4R	M
[S <sup>SR</sup> CO]	ADDRESSABLE PHOTOELECTRIC SMOKE SENSOR WITH CO SENSOR/SOUNDER BASE	SIMPLEX	4098-9714 HEAD 4098-9771 BASE	4K 4Q	M, H
[H]	HEAT SENSOR WITH STANDARD BASE	SIMPLEX	4098-9733 HEAD 4098-9792 BASE	4A 1B	M
<b>MODULES &amp; RELAYS</b>					
[AM]	INDIVIDUAL ADDRESSABLE MODULE	SIMPLEX	4090-9001	1F	M, Z
[IAM]	RELAY IAM	SIMPLEX	4090-9002	4H	M, R
[IDNET]	RELAY IDNET 2 IAM W/T SENSE	SIMPLEX	4090-9118	4H	M, R
[PAM-1]	ENCAPSULATED RELAY PAM-1, SPDT W/ LED, APOLLO AMERICA INC PAM-1	SIMPLEX	2088-9021	1D	R
<b>NOTIFICATION DEVICES</b>					
[#]	ADDRESSABLE STROBE, CEILING MOUNT, WHITE, FIRE, CLEAR LENS	SIMPLEX	4906-9204	HB	A
[#W]	ADDRESSABLE MULTI-CANDELA SPEAKER/STROBE, CEILING MOUNT, WHITE, FIRE, CLEAR LENS	SIMPLEX	4906-9256	4C	S, A
[#W]	SPEAKER ONLY, WALL MOUNT	SIMPLEX	4902-9717 4905-9942 SKIRT	4C	S
[T4]	TEMPORAL 4 MODULE	SIMPLEX	4905-9835	4E	H
<b>MISCELLANEOUS DEVICES</b>					
[K]	KNOX BOX WITH TAMPER SWITCH	KNOX	3200 SERIES	MFG	Z
[VS]	TAMPER SWITCH	BY OTHERS	BY OTHERS	FBO	Z
[WFS]	WATERFLOW SWITCH	BY OTHERS	BY OTHERS	FBO	Z
[DH]	DOOR HOLDER	BY OTHERS	BY OTHERS	FBO	R
[WFR]	END-OF-LINE RESISTOR 6.8K (EOL)	SIMPLEX	4081-9004		
<b>BACKBOX CODES</b>					
<b>CODE</b>	<b>BOX SPECIFICATIONS</b>	<b>CODE</b>	<b>BOX SPECIFICATIONS</b>		
4A	4" SQ. BOX 1 1/2" DEEP	1E	SINGLE GANG BOX 2 1/2" DEEP		
4B	4" SQ. BOX 1 1/2" DEEP W/ COVER	1F	SINGLE GANG BOX 2 1/2" DEEP W/COVER		
4C	4" SQ. BOX 1 1/2" DEEP W/ 1 1/2" EXT. RING	1G	SINGLE GANG BOX 2 3/4" DEEP		
4D	4" SQ. BOX 2 1/8" DEEP	1H	SINGLE GANG BOX 3 1/2" DEEP		
4E	4" SQ. BOX 2 1/8" DEEP W/ COVER	2A	DOUBLE GANG BOX 2" DEEP		
4F	4" SQ. BOX 2 1/8" DEEP W/ 1 1/2" EXT. RING	2B	TWO GANG BOX 2 1/2" DEEP		
4G	4" SQ. BOX 2 1/8" DEEP W/ SINGLE GANG COVER	2C	TWO GANG BOX 2 3/4" DEEP		
4H	4" SQ. BOX 2 1/8" DEEP W/ TWO GANG COVER	5A	5 GANG BOX 2 1/2" DEEP		
4J	4" SQ. BOX 2 1/2" DEEP	6A	SINGLE GANG BOXES 3 1/2" DEEP		
4K	4" OCT. BOX 1 1/2" DEEP	6B	6 GANG BOX		
4L	4" OCT. BOX 1 1/2" DEEP W/ 1 1/2" EXT. RING	6C	6 GANG BOX 2 1/2" DEEP		
4M	4 11/16" SQ. BOX 2 1/8" DEEP	6D	6 GANG BOX 3 1/2" DEEP		
4N	4 11/16" SQ. BOX 1 1/2" DEEP W/ 1 1/2" EXT. RING	FBO	FURNISHED BY OTHERS		
4P	4 11/16" SQ. BOX 2 1/8" DEEP W/ 1 1/2" EXT. RING	MFG	SUPPLIED BY MANUFACTURER		
4Q	4" SQ. BOX 1 1/2" DEEP W/4098-9832 ADAPTER	MDW	MOUNTS TO DUCTWORK		
4R	4" SQ. BOX 1 1/2" DEEP W/RACO 787 OR EQUIV.	MBD	MOUNTS IN BOX BEHIND DETECTOR		
4S	4" SQ. BOX 1 1/2" DEEP W/4098-9863 ADAPTER	WM	WALL MOUNT		
1A	SINGLE GANG BOX 1 1/2" DEEP	DT	DESK TOP MOUNT		
1B	SINGLE GANG BOX 2" DEEP	DS	REFER TO PRODUCT DATASHEET		
1C	SINGLE GANG BOX 2 1/8" DEEP	NR	NO BACKBOX REQUIRED		
1D	SINGLE GANG BOX 2 1/8" DEEP W/COVER	TRM	3.5" WIDE SNAP TRACK W/MOUNTING SCREWS		

FOR ADDITIONAL BACK BOX OPTIONS, REFER TO THE XX-700 SERIES DRAWINGS OR PRODUCT DATA SHEETS AND INSTALLATION INSTRUCTIONS.

**FIRE ALARM WIRE LIST**

CIRCUIT DESCRIPTION	CONSTRUCTION	GAUGE	CIRCUIT PROPERTIES	ACCEPTABLE CABLE TYPES				
				P/IE	P/UP	THHN	TFFN	OUTDOOR
A ADDRESSABLE NOTIFICATION	UTP SOLID	14 AWG	60pf/ft. MAX CAPACITANCE: 3 twists/ft. RECOMMENDED	X	X			
B R/U/NZ COMMUNICATION	TSP SOLID	16 AWG	60pf/ft. MAX CAPACITANCE: 3 twists/ft. RECOMMENDED	X	X			
D DOOR HOLDER	TP SOLID	14 AWG		X	X	X		
H AUDIBLE CIRCUIT	2 COND. SOLID	14 AWG		X	X	X		
K REMOTE TEST SWITCH/LED	(2) 2 COND. SOLID	16 AWG		X	X	X		
M IDNET	UTP SOLID	16 AWG		X	X			
P POWER	2 COND. SOLID	16 AWG		X	X	X		
R RELAY	2 COND. SOLID	14 AWG		X	X	X		
S AUDIO	UTP SOLID	16 AWG	30pf/ft. MAX CAPACITANCE RECOMMENDED	X	X			
Sd DIGITAL AUDIO RISER	UTP SOLID	16 AWG	LOW CAPACITANCE CABLE MAY BE REQUIRED	X	X			
Z ZONE (IDC)	2 COND. SOLID	16 AWG		X	X	X		
<b>CONDUIT SIZE   MAX CONDUCTOR AREA   CONDUIT SIZE   MAX CONDUCTOR AREA   NOTES</b>								
1/2"	0.12 SQ INCH *	1-1/4"	0.60 SQ INCH *	*40% FILL PER N.E.C.				
3/4"	0.21 SQ INCH *	1-1/2"	0.82 SQ INCH *	SUBSCRIPT "U": UNSHIELDED CABLES MIXED WITH SHIELDED CABLES OF SAME CIRCUIT DESIGNATION.				
1"	0.34 SQ INCH *	2"	1.34 SQ INCH *					
<b>**OUTDOOR AERIAL CABLE REQUIRES MESSENGER</b>								
ITEMS SUCH AS CAPACITANCE BETWEEN CONDUCTORS AND WIRE GAUGE CAN BE CRUCIAL TO THE CIRCUIT DESIGN OF THIS SYSTEM. INSTALLATION, THE INSTALLING CONTRACTOR IS RESPONSIBLE FOR SELECTING CABLE MANUFACTURER AND MODEL THAT MEETS OR EXCEEDS THE ABOVE REQUIREMENTS. RECOMMENDED CABLE MANUFACTURERS AND MODEL NUMBERS ARE AVAILABLE UPON REQUEST.								

**tyco** SimplexGrinnell  
Safer. Smarter. Tyco.™

DISTRICT - 147  
30 LITTLEFIELD DRIVE  
MILWAUKEE, WI 53212  
PHONE: 207-845-6440  
FAX: 207-845-6439

**FRANKLIN TOWERS**  
FRANKLIN TOWERS  
211 CUMBERLAND AVE  
PORTLAND, ME 04101

ISSUE LOG	MARK	DATE	CAD	CHK	DESCRIPTION

DRAWN BY: JDEDEACRUZ  
CHECKED BY: AONEAL  
ISSUE DATE: 1/19/18  
JOB #: 14760432801  
PROJECT #: TYCO SIMPLEXGRINNELL © 2018

SYSTEM: **FIRE ALARM SYSTEM**

SHEET: **SIXTEENTH FLOOR DEVICE PLACEMENT PLAN**

**FA-116**

IMPORTANT NOTICE TO USER: By accepting or using this drawing and/or the information contained herein, the user agrees to the following terms and conditions: The electronic information in this drawing may be subject to intentional or unintentional alteration. Any use, reuse, copying, modification or alteration of the information contained herein shall be at the user's risk of the user. This information may not be sold or transferred to any third party, used on other projects or additions to the project for which it was prepared, or used for completion of the project for which it was prepared, without the written consent of Tyco. The information may not be sold or transferred to any third party, used on other projects or additions to the project for which it was prepared, or used for completion of the project for which it was prepared, without the written consent of Tyco. SimplexGrinnell, Tyco, and Tyco logo are trademarks of Tyco International Limited. All other trademarks are the property of their respective owners.