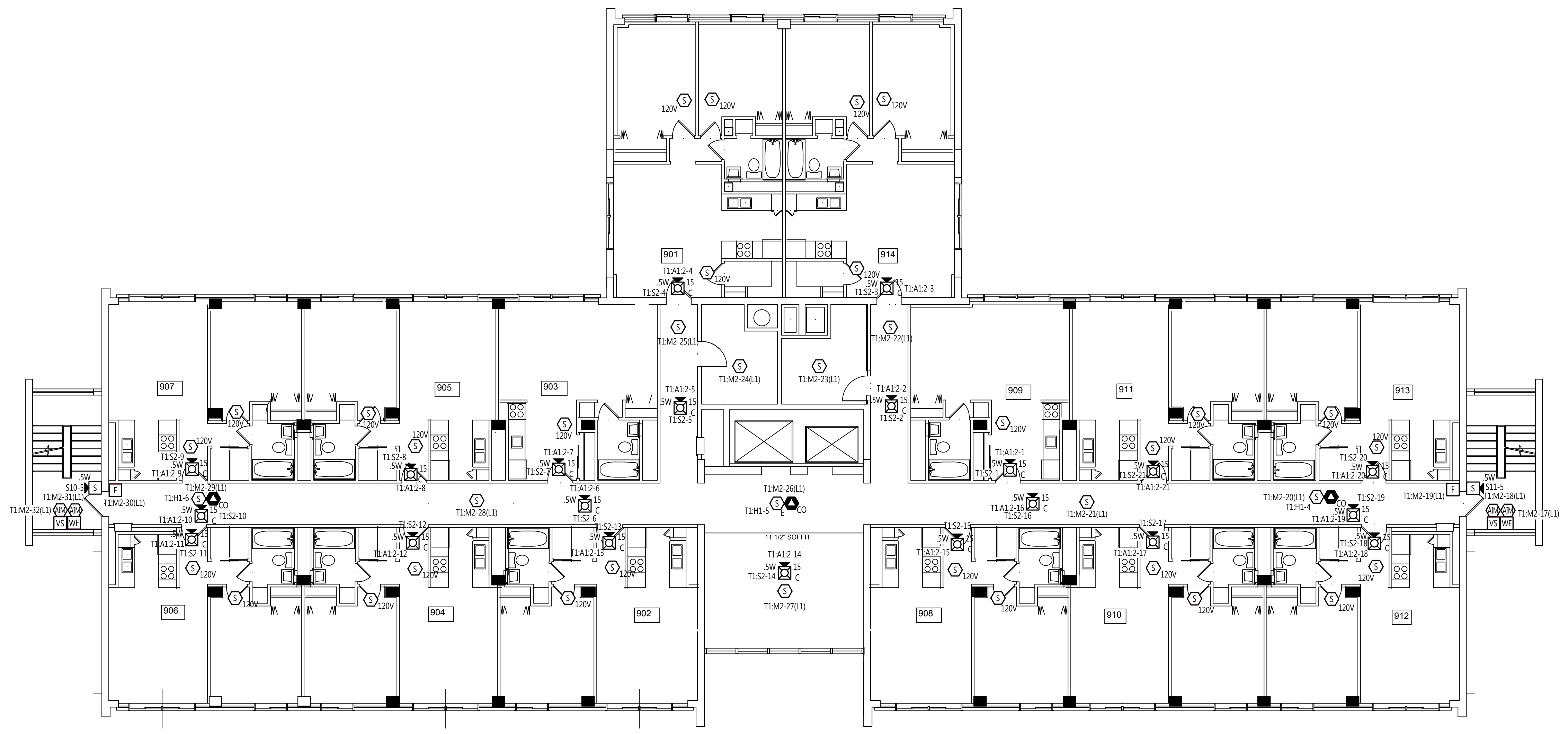


- GENERAL NOTES:**
1. ALL CEILINGS ARE ASSUMED TO BE 10' A.F.F. SMOOTH CONSTRUCTION UNLESS NOTED OTHERWISE.
 2. TAP ALL SPEAKERS AT 0.5W UNLESS NOTED OTHERWISE.
 3. SET ALL SPEAKER VOLTAGE JUMPERS TO THE 70.7V SETTING.
 4. ALL NOTIFICATION APPLIANCE CANDELA INTENSITY PLUGS SHALL RETAIN THEIR FACTORY SETTING OF "FACP" UNLESS OTHERWISE DIRECTED BY THE AUTHORITY HAVING JURISDICTION.
 5. DO NOT CHANGE DEFAULT APPLIANCE CONFIGURATION SWITCH SETTINGS ON ADDRESSABLE A/V DEVICES (CFG1). REFER TO DEVICE DETAILS AND INSTALLATION INSTRUCTIONS FOR MORE INFORMATION.

FIRE ALARM SYMBOL LEGEND

SYMBOL	DESCRIPTION	BRAND	MODEL	BOX CODE	WIRE TYPE
PANELS & ANNUNCIATORS					
[FACP]	4100ES FIRE ALARM CONTROL PANEL, 120 VAC	SIMPLEX	4100-9311	MFG	
[TPR]	4100ES TRANSPONDER FIRE ALARM LOCAL MODE TRANSPONDER PANEL, 120 VAC	SIMPLEX	4100-9601	MFG	
[FAA]	SERIAL LCD ANNUNCIATOR	SIMPLEX	4603-9101	6D B P	
[BATT]	BATTERY CABINET W/ 75AH BATTERY SET	SIMPLEX	2081-9280 PW-PS12730U	MFG	
INITIATING DEVICES					
[F]	SINGLE ACTION MANUAL PULL STATION	SIMPLEX	4099-9004	4G 1E	M
[S] _{120V}	LOCAL 120V VOLT SMOKE DETECTOR		SUPPLIED BY OTHERS		
[S]	ADDRESSABLE PHOTOELECTRIC SMOKE SENSOR WITH STANDARD BASE	SIMPLEX	4098-9714 HEAD 4098-9792 BASE	4K 4R	M
[S] _{SB} [CO]	ADDRESSABLE PHOTOELECTRIC SMOKE SENSOR WITH CO SENSOR/SOUNDER BASE	SIMPLEX	4098-9714 HEAD 4098-9771 BASE	4K 4Q	M, H
[H]	HEAT SENSOR WITH STANDARD BASE	SIMPLEX	4098-9733 HEAD 4098-9792 BASE	4A 1B	M
MODULES & RELAYS					
[IM]	INDIVIDUAL ADDRESSABLE MODULE	SIMPLEX	4090-9001	1F	M, Z
[IM] ₂	RELAY IAM	SIMPLEX	4090-9002	4H	M, R
[IM] ₂	RELAY IDNET 2 IAM W/T SENSE	SIMPLEX	4090-9118	4H	M, R
[IM] ₂	ENCAPSULATED RELAY PAM-1, SPDT W/ LED, APOLLO AMERICA INC PAM-1	SIMPLEX	2088-9021	1D	R
NOTIFICATION DEVICES					
[#]	ADDRESSABLE STROBE, CEILING MOUNT, WHITE, FIRE CLEAR LENS	SIMPLEX	4906-9204	HB	A
[#W]	ADDRESSABLE MULTI-CANDELA SPEAKER/STROBE, CEILING MOUNT, WHITE, FIRE, CLEAR LENS	SIMPLEX	4906-9256	4C	S, A
[#W]	SPEAKER ONLY, WALL MOUNT	SIMPLEX	4902-9717 4905-9942 SKIRT	4C	S
[T4]	TEMPORAL 4 MODULE	SIMPLEX	4905-9835	4E	H
MISCELLANEOUS DEVICES					
[K]	KNOX BOX WITH TAMPER SWITCH	KNOX	3200 SERIES	MFG	Z
[VS]	TAMPER SWITCH	BY OTHERS	BY OTHERS	FBO	Z
[WF]	WATERFLOW SWITCH	BY OTHERS	BY OTHERS	FBO	Z
[DH]	DOOR HOLDER	BY OTHERS	BY OTHERS	FBO	R
[W] _{6.8K}	END-OF-LINE RESISTOR 6.8K (EOL)	SIMPLEX	4081-9004		
BACKBOX CODES					
CODE BOX SPECIFICATIONS			CODE BOX SPECIFICATIONS		
4A	4" SQ. BOX 1 1/2" DEEP	1E	SINGLE GANG BOX 2 1/2" DEEP		
4B	4" SQ. BOX 1 1/2" DEEP W/ COVER	1F	SINGLE GANG BOX 2 1/2" DEEP W/COVER		
4C	4" SQ. BOX 1 1/2" DEEP W/ 1 1/2" EXT. RING	1G	SINGLE GANG BOX 3 1/4" DEEP		
4D	4" SQ. BOX 2 1/8" DEEP	1H	SINGLE GANG BOX 3 1/2" DEEP		
4E	4" SQ. BOX 2 1/8" DEEP W/ COVER	1I	DOUBLE GANG BOX 2" DEEP		
4F	4" SQ. BOX 2 1/8" DEEP W/ 1 1/2" EXT. RING	2A	TWO GANG BOX 2 1/2" DEEP		
4G	4" SQ. BOX 2 1/8" DEEP W/ SINGLE GANG COVER	2C	TWO GANG BOX 2 3/4" DEEP		
4H	4" SQ. BOX 2 1/8" DEEP W/ TWO GANG COVER	2A	5 GANG BOX 2 1/2" DEEP		
4J	4" SQ. BOX 1 1/2" DEEP	6B	SINGLE GANG BOXES 3 1/2" DEEP		
4K	4" OCT. BOX 1 1/2" DEEP	6C	6 GANG BOX		
4L	4" OCT. BOX 1 1/2" DEEP W/ 1 1/2" EXT. RING	6D	6 GANG BOX 3 1/2" DEEP		
4M	4 11/16" SQ. BOX 2 1/8" DEEP	FBO	FURNISHED BY OTHERS		
4N	4 11/16" SQ. BOX 1 1/2" DEEP W/ 1 1/2" EXT. RING	MFG	SUPPLIED BY MANUFACTURER		
4P	4 11/16" SQ. BOX 2 1/8" DEEP W/ 1 1/2" EXT. RING	MDW	MOUNTS TO DUCTWORK		
4Q	4" SQ. BOX 1 1/2" DEEP W/4098-9832 ADAPTER	MBD	MOUNTS IN BOX BEHIND DETECTOR		
4R	4" SQ. BOX 1 1/2" DEEP W/RACO 787 OR EQUIV	WM	WALL MOUNT		
4S	4" SQ. BOX 1 1/2" DEEP W/4098-9863 ADAPTER	DT	DESK TOP MOUNT		
1A	SINGLE GANG BOX 1 1/2" DEEP	DS	REFER TO PRODUCT DATASHEET		
1B	SINGLE GANG BOX 2" DEEP	NR	NO BACKBOX REQUIRED		
1C	SINGLE GANG BOX 2 1/8" DEEP	TRM	3.5" WIDE SNAP TRACK W/MOUNTING SCREWS		
1D	SINGLE GANG BOX 2 1/8" DEEP W/COVER				

FOR ADDITIONAL BACK BOX OPTIONS, REFER TO THE XX-700 SERIES DRAWINGS OR PRODUCT DATA SHEETS AND INSTALLATION INSTRUCTIONS.



WEST WING EAST WING

FIRE ALARM WIRE LIST

CIRCUIT DESCRIPTION	CONSTRUCTION	GAUGE	CIRCUIT PROPERTIES	ACCEPTABLE CABLE TYPES				
				PLR	PLP	THIN	TFEN	OUTDOOR
A ADDRESSABLE NOTIFICATION	UTP SOLID	14 AWG	60pF/ft. MAX CAPACITANCE; 3 twists/ft. RECOMMENDED	X	X			
B RUI/N2 COMMUNICATION	TSP SOLID	16 AWG	60pF/ft. MAX CAPACITANCE; 3 twists/ft. RECOMMENDED	X	X			
D DOOR HOLDER	TP SOLID	14 AWG		X	X	X		
H AUDIBLE CIRCUIT	2 COND. SOLID	14 AWG		X	X	X		
K REMOTE TEST SWITCH/LED	(2) 2 COND. SOLID	16 AWG		X	X	X		
M IDNET	UTP SOLID	16 AWG		X	X			
P POWER	2 COND. SOLID	16 AWG		X	X	X		
R RELAY	2 COND. SOLID	14 AWG		X	X	X		
S AUDIO	UTP SOLID	16 AWG	30pF/ft. MAX CAPACITANCE RECOMMENDED	X	X			
Sd DIGITAL AUDIO RISER	UTP SOLID	16 AWG	LOW CAPACITANCE CABLE MAY BE REQUIRED	X	X			
Z ZONE (IDC)	2 COND. SOLID	16 AWG		X	X	X		

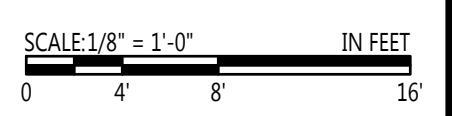
CONDUIT SIZE | MAX CONDUCTOR AREA | CONDUIT SIZE | MAX CONDUCTOR AREA | NOTES

1/2"	0.12 SQ INCH *	1-1/4"	0.60 SQ INCH *	*40% FILL PER N.E.C.
3/4"	0.21 SQ INCH *	1-1/2"	0.82 SQ INCH *	SUBSCRIPT "U": UNSHIELDED CABLES MIXED WITH SHIELDED CABLES OF SAME CIRCUIT DESIGNATION.
1"	0.34 SQ INCH *	2"	1.34 SQ INCH *	

****OUTDOOR AERIAL CABLE REQUIRES MESSENGER**

ITEMS SUCH AS CAPACITANCE BETWEEN CONDUCTORS AND WIRE GAUGE CAN BE CRUCIAL TO THE CIRCUIT DESIGN OF THIS SYSTEM INSTALLATION. THE INSTALLING CONTRACTOR IS RESPONSIBLE FOR SELECTING AND INSTALLING CABLE MANUFACTURER AND MODEL THAT MEETS OR EXCEEDS THE ABOVE REQUIREMENTS. RECOMMENDED CABLE MANUFACTURERS AND MODEL NUMBERS ARE AVAILABLE UPON REQUEST.

NINTH FLOOR DEVICE PLACEMENT PLAN
SCALE: 1/8" = 1'-0"



tyco
SimplexGrinnell
Safer. Smarter. Tyco.™

FRANKLIN TOWERS
FRANKLIN TOWERS
211 CUMBERLAND AVE
PORTLAND, ME 04101

ISSUE LOG

MARK	DATE	CAD	CHK	DESCRIPTION

DRAWN BY: J DELACRUZ
CHECKED BY: A ONEAL
ISSUE DATE: 1/19/18
JOB #: 147.604032801
PROJECT #: TYCO SIMPLEXGRINNELL © 2018

SYSTEM:
FIRE ALARM SYSTEM

SHEET:
NINTH FLOOR DEVICE PLACEMENT PLAN

FA-109

24" x 36" - ARCH D SIZE
LAST PRINTED: 1/23/2018 1:35:46 PM
FILE PATH: Z:\CAD-Engineering - New (2011 & Newer)\Maine Projects\Franklin Towers (PH04032801) ISS-Design\Original Dwg & Calc\FA-109.dwg

IMPORTANT NOTICE: TO USE: By accepting or using this drawing and/or related information, the user agrees to the following terms and conditions: The electronic information in this drawing is subject to modification or amendment without notice. Any use, reuse, copying, modification or alteration of this information contained herein shall be at the sole risk of the user. This information may not be sold or transferred to any third party, used on other projects or additions to the project for which it was prepared or used for completion of the project by any third party. SimplexGrinnell disclaims all liability for the use or reuse of this information.