

- GENERAL NOTES:**
- ALL CEILINGS ARE ASSUMED TO BE 10' A.F.F. SMOOTH CONSTRUCTION UNLESS NOTED OTHERWISE.
 - TAP ALL SPEAKERS AT 0.5W UNLESS NOTED OTHERWISE.
 - SET ALL SPEAKER VOLTAGE JUMPERS TO THE 70.7V SETTING.
 - ALL NOTIFICATION APPLIANCE CANDELA INTENSITY PLUGS SHALL RETAIN THEIR FACTORY SETTING OF "FACP" UNLESS OTHERWISE DIRECTED BY THE AUTHORITY HAVING JURISDICTION.
 - DO NOT CHANGE DEFAULT APPLIANCE CONFIGURATION SWITCH SETTINGS ON ADDRESSABLE A.V. DEVICES (CFG3). REFER TO DEVICE DETAILS AND INSTALLATION INSTRUCTIONS FOR MORE INFORMATION.

FIRE ALARM SYMBOL LEGEND

SYMBOL	DESCRIPTION	BRAND	MODEL	BOX CODE	WIRE TYPE
PANELS & ANNUNCIATORS					
[FACP]	4100ES FIRE ALARM CONTROL PANEL, 120 VAC	SIMPLEX	4100-9311	MFG	
[TPR]	4100ES TRANSPONDER FIRE ALARM LOCAL MODE TRANSPONDER PANEL, 120 VAC	SIMPLEX	4100-9601	MFG	
[FAA]	SERIAL LCD ANNUNCIATOR	SIMPLEX	4603-9101	6D B P	
[BATT]	BATTERY CABINET W/ 75AH BATTERY SET	SIMPLEX	2081-9280 PW-F512730U	MFG	
INITIATING DEVICES					
[F]	SINGLE ACTION MANUAL PULL STATION	SIMPLEX	4099-9004	4G 1E	M
[S]	LOCAL 120V VOLT SMOKE DETECTOR		SUPPLIED BY OTHERS		
[S]	ADDRESSABLE PHOTOELECTRIC SMOKE SENSOR WITH STANDARD BASE	SIMPLEX	4098-9714 HEAD 4098-9792 BASE	4K 4R	M
[S] SB CO	ADDRESSABLE PHOTOELECTRIC SMOKE SENSOR WITH CO SENSOR/SOUNDER BASE	SIMPLEX	4098-9714 HEAD 4098-9771 BASE	4K 4Q	M, H
[H]	HEAT SENSOR WITH STANDARD BASE	SIMPLEX	4098-9733 HEAD 4098-9792 BASE	4A 1B	M
MODULES & RELAYS					
[IM]	INDIVIDUAL ADDRESSABLE MODULE	SIMPLEX	4090-9001	1F	M, Z
[IM]	RELAY IAM	SIMPLEX	4090-9002	4H	M, R
[IM]	RELAY IDNET 2 IAM W/T SENSE	SIMPLEX	4090-9118	4H	M, R
[IM]	ENCAPSULATED RELAY PAM-1, SPDT W/ LED, APOLLO AMERICA INC PAM-1	SIMPLEX	2088-9021	1D	R
NOTIFICATION DEVICES					
[#]	ADDRESSABLE STROBE, CEILING MOUNT, WHITE, FIRE CLEAR LENS	SIMPLEX	4906-9204	HB	A
[#] W	ADDRESSABLE MULTI-CANDELA SPEAKER/STROBE, CEILING MOUNT, WHITE, FIRE CLEAR LENS	SIMPLEX	4906-9256	4C	A, S
[#] S	SPEAKER ONLY, WALL MOUNT	SIMPLEX	4902-9717 4905-9942 SKIRT	4C	S
[T4]	TEMPORAL 4 MODULE	SIMPLEX	4905-9835	4E	H
MISCELLANEOUS DEVICES					
[K]	KNOW BOX WITH TAMPER SWITCH	KNOW	3200 SERIES	MFG	Z
[VS]	TAMPER SWITCH	BY OTHERS	BY OTHERS	FBO	Z
[WF]	WATERFLOW SWITCH	BY OTHERS	BY OTHERS	FBO	Z
[DH]	DOOR HOLDER	BY OTHERS	BY OTHERS	FBO	R
[W] 6.8K	END-OF-LINE RESISTOR 6.8K (EOL)	SIMPLEX	4081-9004		

BACKBOX CODES

CODE	BOX SPECIFICATIONS	CODE	BOX SPECIFICATIONS
4A	4" SQ. BOX 1 1/2" DEEP	1E	SINGLE GANG BOX 2 1/2" DEEP
4B	4" SQ. BOX 1 1/2" DEEP W/ COVER	1F	SINGLE GANG BOX 2 1/2" DEEP W/COVER
4C	4" SQ. BOX 1 1/2" DEEP W/ 1 1/2" EXT. RING	1G	SINGLE GANG BOX 2 1/2" DEEP
4D	4" SQ. BOX 2 1/8" DEEP	1H	SINGLE GANG BOX 3 1/2" DEEP
4E	4" SQ. BOX 2 1/8" DEEP W/ COVER	1I	DOUBLE GANG BOX 2 DEEP
4F	4" SQ. BOX 2 1/8" DEEP W/ 1 1/2" EXT. RING	2A	TWO GANG BOX 2 1/2" DEEP
4G	4" SQ. BOX 2 1/8" DEEP W/ SINGLE GANG COVER	2C	TWO GANG BOX 2 3/4" DEEP
4H	4" SQ. BOX 2 1/8" DEEP W/ TWO GANG COVER	5A	5 GANG BOX 1 1/2" DEEP
4J	4" SQ. BOX 2 1/2" DEEP	6A	6 SINGLE GANG BOXES 3 1/2" DEEP
4K	4" OCT. BOX 1 1/2" DEEP	6B	6 GANG BOX
4L	4" OCT. BOX 1 1/2" DEEP W/ 1 1/2" EXT. RING	6C	6 GANG BOX 2 1/2" DEEP
4M	4 11/16" SQ. BOX 2 1/8" DEEP	6D	6 GANG BOX 3 1/2" DEEP
4N	4 11/16" SQ. BOX 1 1/2" DEEP W/ 1 1/2" EXT. RING	FBO	FURNISHED BY OTHERS
4P	4 11/16" SQ. BOX 2 1/8" DEEP W/ 1 1/2" EXT. RING	MFG	SUPPLIED BY MANUFACTURER
4Q	4" SQ. BOX 1 1/2" DEEP W/4098-9832 ADAPTER	MDW	MOUNTS TO DUCTWORK
4R	4" SQ. BOX 1 1/2" DEEP W/RACO 787 OR EQUIV	MBD	MOUNTS IN BOX BEHIND DETECTOR
4S	4" SQ. BOX 1 1/2" DEEP W/4098-9863 ADAPTER	WM	WALL MOUNT
1A	SINGLE GANG BOX 1 1/2" DEEP	DT	DESK TOP MOUNT
1B	SINGLE GANG BOX 2" DEEP	DS	REFER TO PRODUCT DATASHEET
1C	SINGLE GANG BOX 2 1/8" DEEP	NR	NO BACKBOX REQUIRED
1D	SINGLE GANG BOX 2 1/8" DEEP W/COVER	TRM	3.5" WIDE SNAP TRACK W/MOUNTING SCREWS

FOR ADDITIONAL BACK BOX OPTIONS, REFER TO THE XX-700 SERIES DRAWINGS OR PRODUCT DATA SHEETS AND INSTALLATION INSTRUCTIONS.

FIRE ALARM WIRE LIST

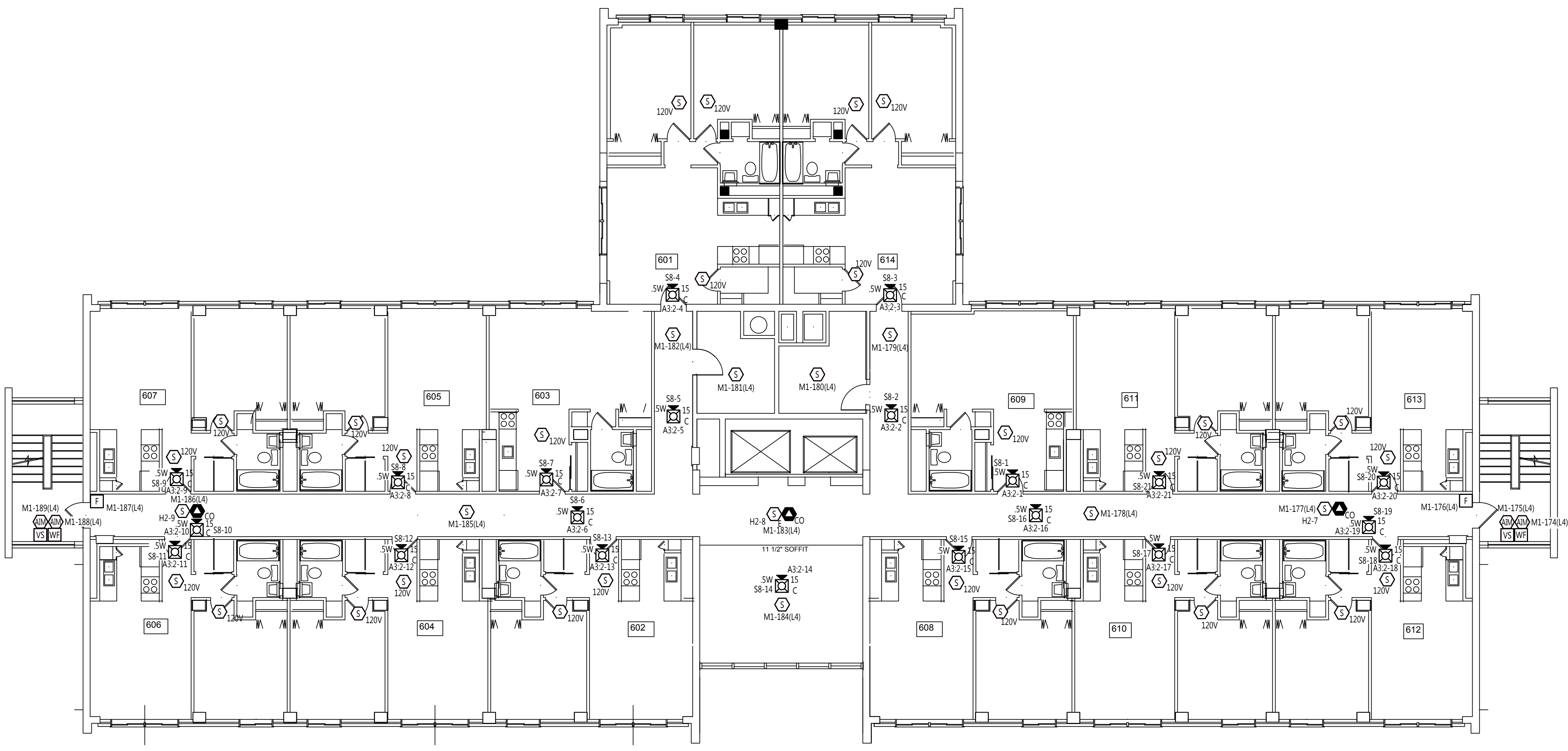
CIRCUIT DESCRIPTION	CONSTRUCTION	GAUGE	CIRCUIT PROPERTIES	ACCEPTABLE CABLE TYPES					
				PLR	PLP	TFEN	THIN	THICK	CL
A ADDRESSABLE NOTIFICATION	UTP SOLID	14 AWG	60pF/ft. MAX CAPACITANCE; 3 twists/ft. RECOMMENDED	X	X				
B RUI/N2 COMMUNICATION	TSP SOLID	16 AWG	60pF/ft. MAX CAPACITANCE; 3 twists/ft. RECOMMENDED	X	X				
D DOOR HOLDER	TP SOLID	14 AWG		X	X	X			
H AUDIBLE CIRCUIT	2 COND. SOLID	14 AWG		X	X	X			
K REMOTE TEST SWITCH/LED	(2) 2 COND. SOLID	16 AWG		X	X	X			
M IDNET	UTP SOLID	16 AWG		X	X				
P POWER	2 COND. SOLID	16 AWG		X	X	X			
R RELAY	2 COND. SOLID	14 AWG		X	X	X			
S AUDIO	UTP SOLID	16 AWG	30pF/ft. MAX CAPACITANCE RECOMMENDED	X	X				
Sd DIGITAL AUDIO RISER	UTP SOLID	16 AWG	LOW CAPACITANCE CABLE MAY BE REQUIRED	X	X				
Z ZONE (IDC)	2 COND. SOLID	16 AWG		X	X	X			

CONDUIT SIZE | MAX CONDUCTOR AREA | CONDUIT SIZE | MAX CONDUCTOR AREA | NOTES

1/2"	0.12 SQ INCH *	1-1/4"	0.60 SQ INCH *	*40% FILL PER N.E.C.
3/4"	0.21 SQ INCH *	1-1/2"	0.82 SQ INCH *	SUBSCRIPT "U": UNSHIELDED CABLES MIXED WITH SHIELDED CABLES OF SAME CIRCUIT DESIGNATION.
1"	0.34 SQ INCH *	2"	1.34 SQ INCH *	

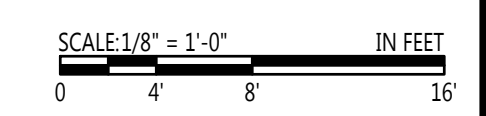
****OUTDOOR AERIAL CABLE REQUIRES MESSENGER**

ITEMS SUCH AS CAPACITANCE BETWEEN CONDUCTORS AND WIRE GAUGE CAN BE CRUCIAL TO THE CIRCUIT DESIGN OF THIS SYSTEM INSTALLATION. THE INSTALLING CONTRACTOR IS RESPONSIBLE FOR SELECTING AND INSTALLING CABLE MANUFACTURER AND MODEL THAT MEETS OR EXCEEDS THE ABOVE REQUIREMENTS. RECOMMENDED CABLE MANUFACTURERS AND MODEL NUMBERS ARE AVAILABLE UPON REQUEST.



WEST WING EAST WING

SIXTH FLOOR DEVICE PLACEMENT PLAN
SCALE: 1/8" = 1'-0"



tyco
SimplexGrinnell
Safer. Smarter. Tyco.™

17700 W. ALBERTA AVE.
PORTLAND, OR 97228
PHONE: 503.842.6440
FAX: 503.842.6439

FRANKLIN TOWERS

FRANKLIN TOWERS
211 CUMBERLAND AVE
PORTLAND, ME 04101

ISSUE LOG	MARK	DATE	CHK	DESCRIPTION

DRAWN BY: J DELACRUZ
CHECKED BY: A ONEAL
ISSUE DATE: 1/19/18
JOB #: 147.604032801
PROJECT #: TYCO SIMPLEXGRINNELL © 2018

SYSTEM: **FIRE ALARM SYSTEM**

SHEET: **SIXTH FLOOR DEVICE PLACEMENT PLAN**

FA-106

FILE PATH: Z:\CAD-Engineering - New (2011 & Newer)\Maine Projects\Franklin Towers (PH04032801)_SSD\Drawings\Original Draw & Calc\FA-106.dwg
 LAST SAVED BY: J DELACRUZ
 LAST PRINTED: 1/23/2018 1:35:15 PM
 24" x 36" - ARCH D SIZE

IMPORTANT NOTICE: TO USE: By accepting or using this drawing and/or the information contained herein, the user agrees to the following terms and conditions: The electronic information in this drawing is to be used for informational or reference purposes only. Any use, reuse, copying, modification or alteration of this information contained herein shall be at the sole risk of the user. This information may not be sold or transferred to any third party, used on other projects or additions to the project for which it was prepared or used for completion of the project by any third party. SimplexGrinnell disclaims all liability for the use or reuse of this information.