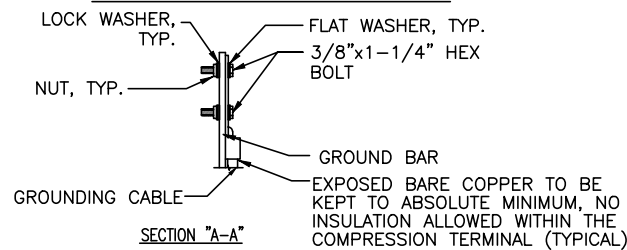
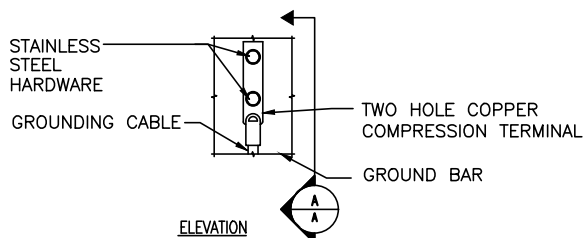


GROUND WIRE TO GROUND BAR CONNECTION DETAIL

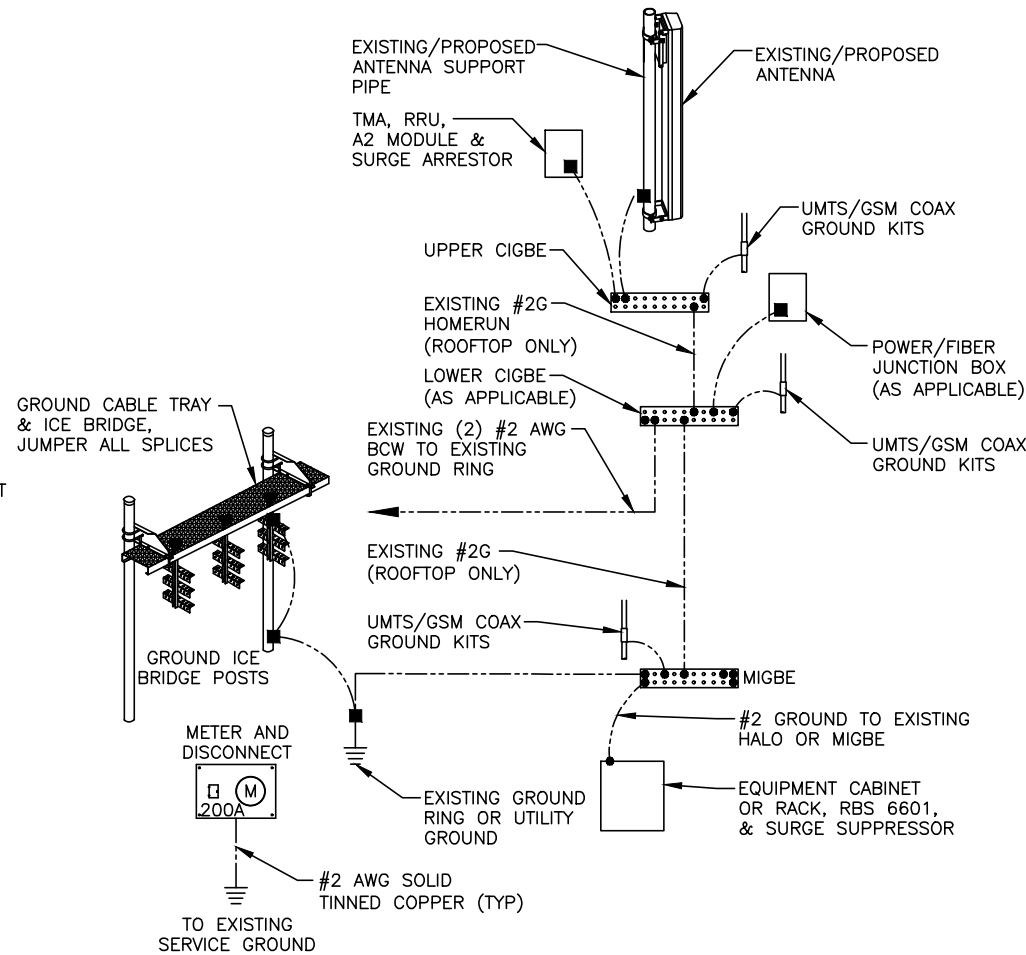
SCALE: N.T.S. 1 G-1



- NOTE:
- "DOUBLING UP" OR "STACKING" OF CONNECTION IS NOT PERMITTED.
 - OXIDE INHIBITING COMPOUND TO BE USED AT ALL LOCATIONS.
 - CADWELD DOWNLEADS FROM UPPER EGB, LOWER EGB, AND MGB.

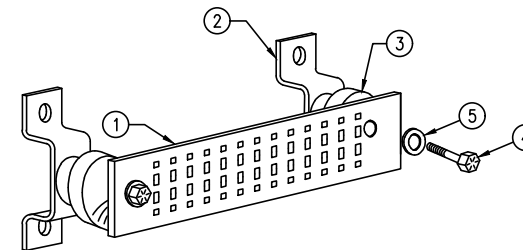
TYPICAL GROUND BAR CONNECTION DETAIL

SCALE: N.T.S. 3 G-1



GROUNDING RISER DIAGRAM

SCALE: N.T.S. 2 G-1



GROUND BAR - DETAIL

SCALE: N.T.S. 4 G-1

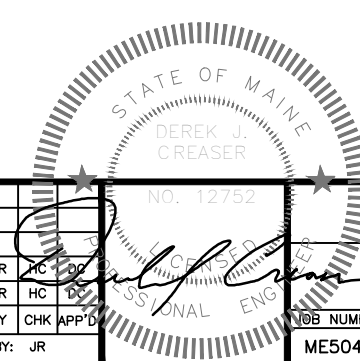
EACH GROUND CONDUCTOR TERMINATING ON ANY GROUND BAR SHALL HAVE AN IDENTIFICATION TAG ATTACHED AT EACH END THAT WILL IDENTIFY ITS ORIGIN AND DESTINATION.

SECTION "P" - SURGE PRODUCERS

- CABLE ENTRY PORTS (HATCH PLATES) (#2)
- GENERATOR FRAMEWORK (IF AVAILABLE) (#2)
- TELCO GROUND BAR
- COMMERCIAL POWER COMMON NEUTRAL/GROUND BOND (#2)
- +24V POWER SUPPLY RETURN BAR (#2)
- 48V POWER SUPPLY RETURN BAR (#2)
- RECTIFIER FRAMES.

SECTION "A" - SURGE ABSORBERS

- INTERIOR GROUND RING (#2)
- EXTERNAL EARTH GROUND FIELD (BURIED GROUND RING) (#2)
- METALLIC COLD WATER PIPE (IF AVAILABLE) (#2)
- BUILDING STEEL (IF AVAILABLE) (#2)



EMPIRE telecom
16 ESQUIRE ROAD
BILLERICA, MA 01862
TEL: (978) 608-8400

SITE NUMBER: ME5040
SITE NAME: MUNJOY HILL
211 CUMBERLAND AVENUE
PORTLAND, ME 04101
CUMBERLAND COUNTY



NO.		DATE		REVISIONS		BY		CHK		APP'D		JOB NUMBER		DRAWING NUMBER		REV	
1	03/08/16	ISSUED FOR CONSTRUCTION	JR	HC								ME5040	G-1	1			
0	02/01/16	ISSUED FOR REVIEW	JR	HC													

SCALE: AS SHOWN DESIGNED BY: HC DRAWN BY: JR

AT&T

GROUNDING DETAILS
(LTE 5C 2016)