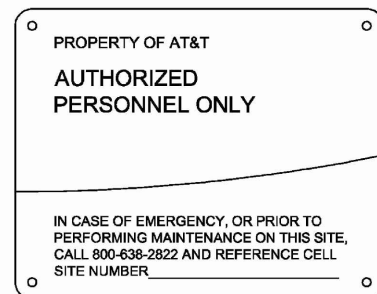


ALERTING SIGNS

ALERTING SIGNS



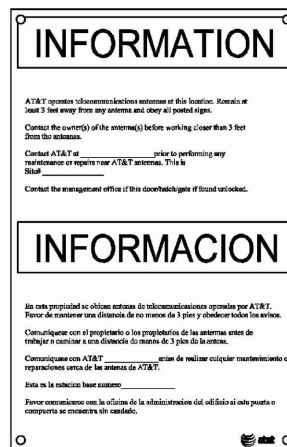
ALERTING SIGN



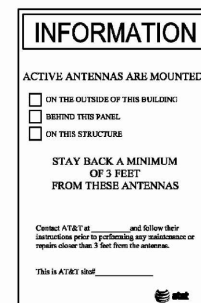
INFO SIGN #5



INFO SIGN #3



INFO SIGN #1



INFO SIGN #2

STAY BACK 3 FEET FROM ANTENNA

INFO SIGN #4

GENERAL SIGNAGE GUIDELINES

(SEE RF SAFETY BARRIER - AT&T ENGINEERED SOLUTION DATED: 2/14/14)

STRUCTURE TYPE	INFO SIGN #1	INFO SIGN #2	INFO SIGN #3	INFO SIGN #4	INFO SIGN #5	STRIPING	NOTICE SIGN	CAUTION SIGN
POLES								
POLE / MONOPINE / MONOPALM	ENTRANCE GATES, SHELTER DOORS OR ON THE OUTDOOR CABINETS	CLIMBING SIDE OF THE POLE	ON BACKSIDE OF ANTENNAS	ON THE SIDE OF ANTENNAS	ON THE SHELTER DOOR OR ON ONE OUTDOOR EQUIPMENT CABINET			AT THE HEIGHT OF THE FIRST CLIMBING STEP, MIN. 9FT. ABOVE GROUND
SCE POLES / POLES WITH VOLTAGE	ENTRANCE GATES, SHELTER DOORS OR ON THE OUTDOOR CABINETS	CLIMBING SIDE OF THE POLE	ON BACKSIDE OF ANTENNAS	ON THE SIDE OF ANTENNAS	ON THE SHELTER DOOR OR ON ONE OUTDOOR EQUIPMENT CABINET			AT THE HEIGHT OF THE FIRST CLIMBING STEP, MIN. 9FT. ABOVE GROUND
LIGHT POLES FLAG POLES	ENTRANCE GATES, SHELTER DOORS OR ON THE OUTDOOR CABINETS	ON THE POLE, NO LESS THAN 3FT BELOW THE ANTENNA	ON BACKSIDE OF ANTENNAS	ON THE SIDE OF ANTENNAS	ON THE SHELTER DOOR OR ON ONE OUTDOOR EQUIPMENT CABINET			
UTILITY WOOD POLES (JPA)	ENTRANCE GATES, SHELTER DOORS OR ON THE OUTDOOR CABINETS	ON THE POLE, NO LESS THAN 3FT BELOW THE ANTENNA	ON BACKSIDE OF ANTENNAS	ON THE SIDE OF ANTENNAS	ON THE SHELTER DOOR OR ON ONE OUTDOOR EQUIPMENT CABINET			IF GP MAX VALUE OF MPE AT ANTENNA LEVEL IS: 0-99%: NOTICE SIGN; OVER 99%: CAUTION SIGN AT NO LESS THAN 3FT BELOW ANTENNA AND 9FT ABOVE GROUND
MICROCELLS MOUNTED ON NON-JPA POLES	ENTRANCE GATES, SHELTER DOORS OR ON THE OUTDOOR CABINETS	ON THE POLE, NO LESS THAN 3FT BELOW THE ANTENNA	ON BACKSIDE OF ANTENNAS	ON THE SIDE OF ANTENNAS	ON THE SHELTER DOOR OR ON ONE OUTDOOR EQUIPMENT CABINET			NOTICE OR CAUTION SIGN AT NO LESS THAN 9FT ABOVE GROUND; ONLY IF THE EXPOSURE EXCEEDS 90% OF THE GENERAL PUBLIC EXPOSURE AT 6FT ABOVE GROUND
ROOF TOPS								
AT ALL ACCESS POINTS OF THE ROOF	x							
ON ANTENNAS	x		x	x				
CONCEALED ANTENNAS	x	x						
ANTENNAS MOUNTED FACING OUTSIDE THE BUILDING	x	x						
ANTENNAS ON SUPPORT STRUCTURE	x	x						
ROOFTOP GRAPH:								
RADIATION AREA IS WITHIN 3FT FROM ANTENNA	x	ADJACENT TO EACH ANTENNA						
RADIATION IS BEYOND 3FT FROM ANTENNA	x	ADJACENT TO EACH ANTENNA				DIAGONAL, YELLOW STRIPING AS TO ROOFVIEW GRAPH		EITHER NOTICE OR CAUTION SIGN (BASED ON ROOFVIEW RESULTS) AT ANTENNAS BARRIER
CHURCH STEEPLES	ACCESS TO STEEPLE	ADJACENT TO ANTENNAS IF ANTENNAS ARE CONCEALED	ON BACKSIDE OF ANTENNAS	ON THE SIDE OF ANTENNAS	ON THE SHELTER DOOR OR ON ONE OUTDOOR EQUIPMENT CABINET			CAUTION SIGN AT THE ANTENNAS
WATER TANKS	ACCESS TO WATER TANK	ADJACENT TO ANTENNAS IF ANTENNAS ARE CONCEALED	ON BACKSIDE OF ANTENNAS	ON THE SIDE OF ANTENNAS	ON THE SHELTER DOOR OR ON ONE OUTDOOR EQUIPMENT CABINET			CAUTION SIGN AT THE ANTENNAS

- NOTES FOR ROOFTOP SITES:
- EITHER NOTICE OR CAUTION SIGNS NEED TO BE POSTED AT EACH SECTOR AS CLOSE AS POSSIBLE TO THE OUTER EDGE OF THE STRIPED OFF AREA OR THE OUTER ANTENNAS OF THE SECTOR.
 - IF ROOFVIEW SHOWS: ONLY BLUE = NOTICE SIGN, BLUE AND YELLOW = CAUTION SIGN, ONLY YELLOW = CAUTION SIGN TO BE INSTALLED.
 - SHOULD THE REQUIRED STRIPING AREA INTERFERE WITH ANY STRUCTURES OR EQUIPMENT (A/C, VENTS, ROOF HATCH, DOORS, OTHER ANTENNAS, DISHES, ETC.), PLEASE NOTIFY AT&T TO MODIFY THE STRIPING AREA, PRIOR TO STARTING THE WORK.

